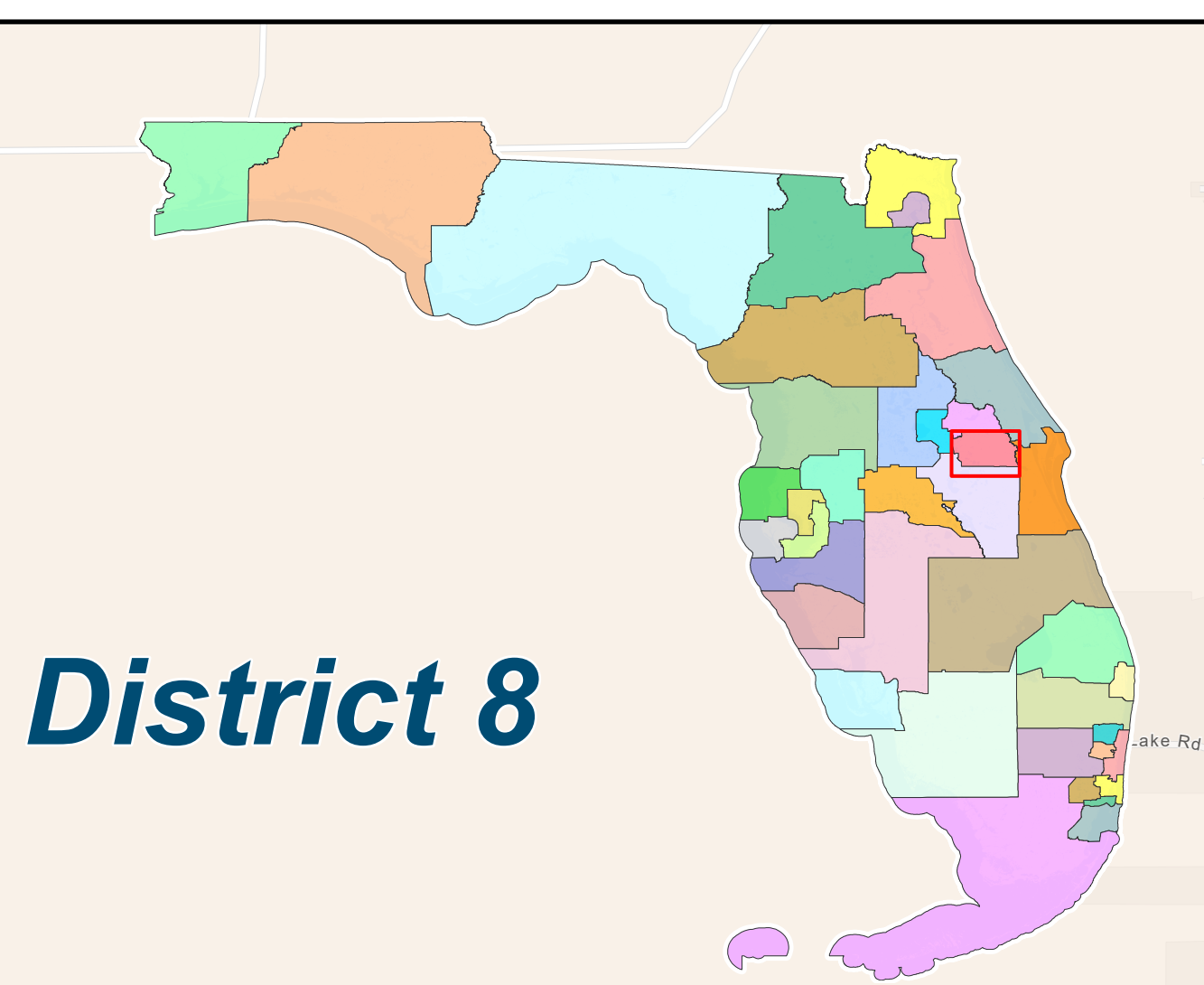
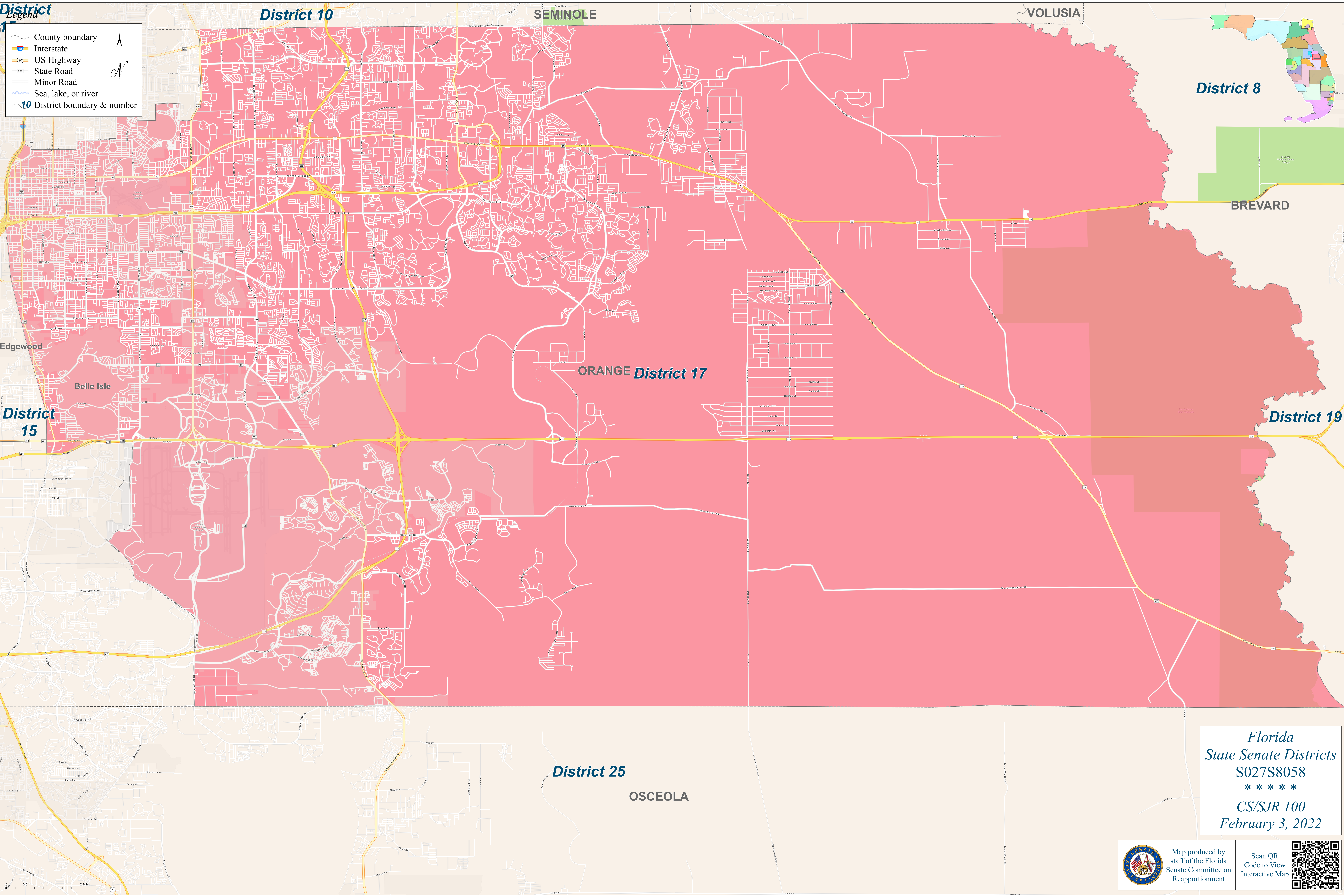


District Legend

- County boundary
- Interstate
- US Highway
- State Road
- Minor Road
- Sea, lake, or river
- 10** District boundary & number



Florida
State Senate Districts
S027S8058
 * * * * *
CS/SJR 100
February 3, 2022

Map produced by staff of the Florida Senate Committee on Reapportionment

Scan QR Code to View Interactive Map