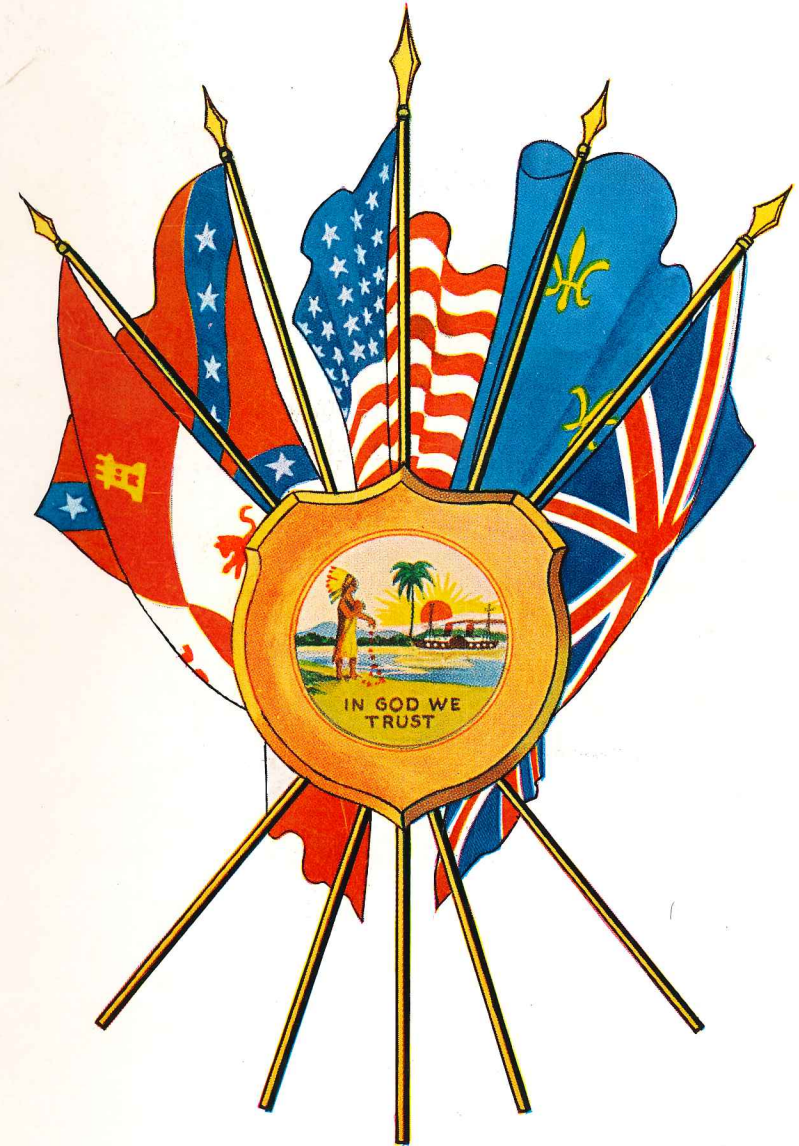




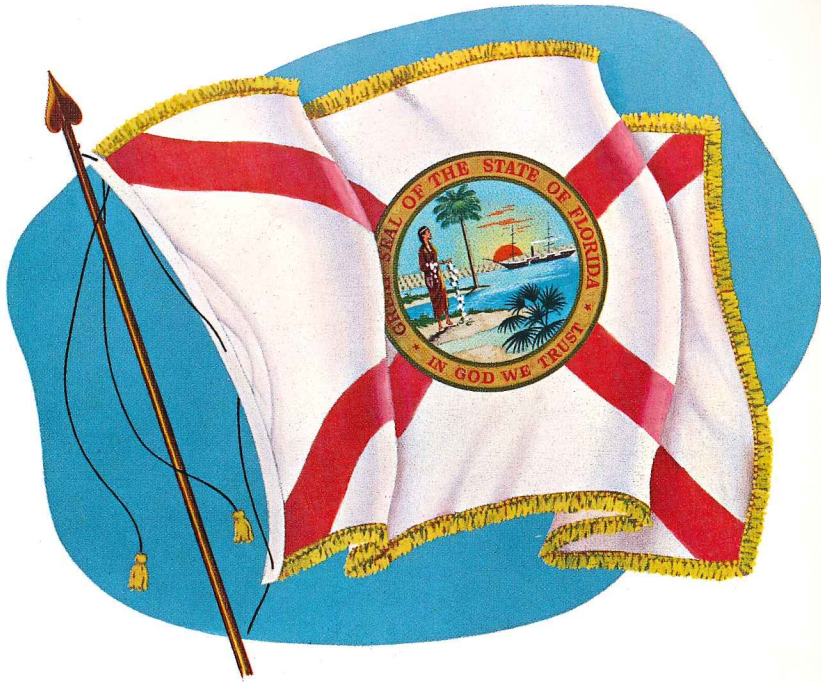
State Beverage

Orange Juice was designated by Senate Bill No. 234 of the 1967 regular session of the Legislature as the State Beverage.

The Florida Senate 1967

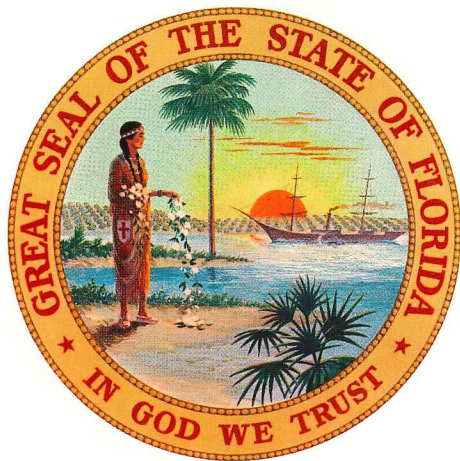


Florida under Five Flags—Spain, France, England, Confederacy and United States



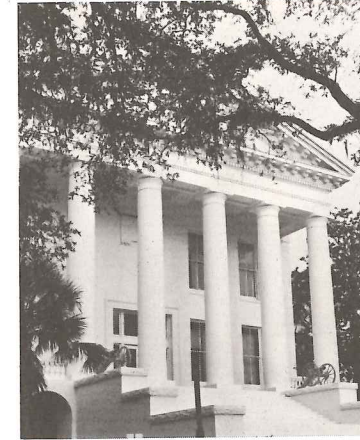
STATE FLAG

Adopted by Joint Resolution No. 4, 1899 Legislature and ratified at General Election 1900. "The Seal of the State, of one-third diameter of the flag in the center of white ground with Red Bars, extending from each corner toward the center, to the outer rim of the Seal." State Motto is "In God We Trust."



STATE SEAL

The present State Seal was adopted by the Constitution of 1868 and readopted by the Constitution of 1885. . . . with the "center thereof a view of the sun's rays over a highland in the distance, a cocoa tree, a steamboat on water, and an Indian female scattering flowers in the foreground."



From the pages of an exciting history of a state blessed from the bounty of our benevolent Creator, emerges a state destined to a position of national greatness. A vital part of this fulfilment is the Legislature of Florida.

The Senate, in presenting this booklet, invites you, especially the young and dynamic who are shortly to occupy the positions of leadership in our society, to visit our elegant capitol and observe the careful construction of the laws of our state. You will feel the stately significance of our past and sense the vibrance of our limitless tomorrow as you visit here in the capitol of Florida.

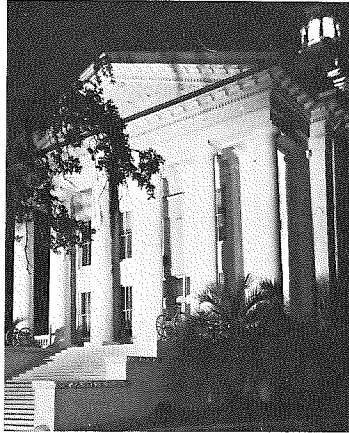
We hope that the following pages unfold an interesting explanation of the lawmaking process and that it will serve to interest you in becoming an active partner in the advance of the cause of democratic government.

Most sincerely yours,

VERLE A. POPE
President of the Senate

Florida's

State Capitol



Three log buildings were erected in the summer of 1824 for the use of territorial officers and of the first Legislative Council to sit in Tallahassee. The exact location of these "government buildings" is not known, as the town of Tallahassee was not laid out until the following year, but according to local tradition the log capitol was on the present capitol square.

In 1826 one wing of what was expected to be the permanent capitol was built on the present site of the capitol. Efforts to complete the building were unsuccessful, and this small, two-story structure was used as the capitol until late in 1839 or early in 1840.

In March, 1839, Congress appropriated \$20,000 for the erection of "a suitable State House" for the Territory. Construction started late in 1839, but the appropriation proved insufficient, and only after Congress granted an additional \$20,000 in 1844 was the capitol completed in time for the first session of the General Assembly of the state in June, 1845.

The capitol remained without noticeable change from 1845 until 1902, except for the addition of a small cupola in 1891. The Constitution of 1885, however (*Art. iv., sec. 21*), made the Secretary of State custodian of the capitol building and grounds. Additions were made to the north and south ends of the building, and the dome was erected, in 1901-1902. A second enlargement—the erection of the east and west wings—was made in 1921-1922. The north wing was built in 1935-1937 with the assistance of the Federal Government, and a south wing completed in 1948. The building is now "balanced" and attracts much favorable comment.

THE SENATE

"Once a Senator, always a Senator" is a catchy phrase of good fellowship that conveys something of the philosophy of the Senate.

The Senate takes every Senator to be a gentleman (although custom decrees that a Senator may not be addressed as a "Gentleman," as are Members of the House of Representatives: He is "the Senator from the Twentieth," for example, but never "the Gentleman from the Twentieth." The Senate leans heavily upon tradition: upon written or remembered precedents. It is slow to change. Together, the houses work well, for this manifestation of the American system of checks and balances sees a bill become an Act only after it has passed both the Senate, with its aristocracy of men, and the House of Representatives, with its democracy of people.

The Constitution provides that in the event of the death or disability of the Governor, the Senate President becomes Chief Executive. If there is no Senate President, because of his death or for any other reason, the Speaker of the House steps into the breach. On two or three occasions the powers and duties of the Governor have devolved upon the President of the Senate.

The term of the Senate President runs from one session of the Legislature to another, since Senators serve four years, that of the Speaker, as a Representative with a two-year term, does not. Terms of all Representatives end on the general election day—the first Tuesday after the first Monday in November of each even numbered year.

Generations of Senate Presidents look down from the walls to heighten the atmosphere of dignity and responsibility that pervades Florida's most exclusive club. The following have been President of the Senate at the sessions listed:

John Warren, 1839-40; Wm P. Duval, 1841; Wm. H. Brockenbrough, 1842; George Walker, 1843-44; James A. Berthelot, 1845; D. H. Mays, 1846; D. G. McLean, 1847; E. D. Tracey, 1848-49; Robert J. Floyd, 1850-53; Hamlin Valentine Snell, 1854-55; Philip Dell, 1856; John Finlayson, 1858-59; Thomas Jefferson Eppes, 1860-61; E. J. Vann, 1862-63; A. K. Allison, 1864; Wm. W. J. Kelly, 1865-67; Horatio Jenkins, 1868; Wm. H. Gleason, 1868-70; E. C. Weeks, 1870; Samuel T. Day, 1871-72; Marcellus L. Stearns, 1873-74; A. L. McCaskill, 1875; Noble A. Hull, 1877-79; L. W. Bethel, 1881-1883; Milton H. Mabry, 1885-87; Joesph B. Wall, 1889; Patrick Houston, 1889; Jefferson B. Browne, 1891; W. H. Reynolds, 1893; F. T. Myers, 1895; Chas. J. Perrenot, 1897; Frank Adams, 1899; Thomas Palmer, 1901; Frank Adams, 1903; Park M. Trammell, 1905; W. Hunt Harris, 1907; Frank M. Hudson, 1909; Frederick P. Cone, 1911-12; Herbert J. Drane, 1913; Charles E. Davis, 1915; John B. Johnson, 1917-18; James E. Calkins, 1919; W. A. MacWilliams, 1921; Theo. T. Turnbull, 1923; John S. Taylor, 1925; S. W. Anderson, 1927; J. J. Parrish, 1929; Pat Whitaker, 1931; T. G. Futch, 1933; W. C. Hodges, 1935; D. Stuart Gillis, 1937; J. Turner Butler, 1939; John R. Beacham, 1941; Philip D. Beall, 1943; Walter W. Rose, 1945; S. Dilworth Clarke, 1947-48; Newman C. Brackin, 1949; Wallace E. Sturgis, 1951; Charley E. Johns, 1953; W. Turner Davis, 1955-56; W. A. Shands, 1957; Dewey M. Johnson, 1959; W. Randolph Hodges, 1961-62; Wilson F. Carraway, 1962-63; James E. Connor, 1965; Verle A. Pope, 1967.

President

Verle A. Pope (D) 12th District—Real estate and insurance *b.* December 12, 1903, Jacksonville, Florida *e.* University of Florida. Phi Kappa Tau. Freshman football, basketball, and swimming *m.* Edith Taylor of St. Augustine (deceased) *c.* Mrs. Richard O. Watson (Margaret) of St. Augustine *affiliations* Kiwanis, Elks, Moose, VFW, American Legion, and Shrine *legislative service* Senate, since 1948. Appropriations, Education, Welfare, Pension-Retirement, Claims, and Governmental Organization Committees *other public service* Board of County Commissioners and District Welfare Board *church* Episcopal *military service* Cadet, Army Air Force. United States Army Air Force. Navigator and Combat Intelligence Officer. Recipient of Presidential Medal, Croix de Guerre, and European Air Medal with eight clusters *recreation* hunting, fishing, and golf *addresses* (business) Charlotte and Treasury Streets, St. Augustine (residence) 55 Dolphin Drive, St. Augustine (mailing) P. O. Box 519, St. Augustine, 32084 *telephone* (business) 829-9061 (residence) 829-3245.



Verle A. Pope, *President*

President Pro-Tempore

Dempsey J. Barron (D) 4th District—Attorney *b.* March 5, 1922, Andalusia, Alabama. Florida, 1924 *e.* University of Florida, LL.B., 1954. Florida State University, B.S., 1956. Delta Theta Phi *m.* Louverne Hall of Panama City *c.* Stephen Dempsey and Stuart Judson *affiliations* Chamber of Commerce, board of directors of Cerebral Palsy, Florida and American Bar Associations, International Association of Insurance Counsel, Association of Insurance Attorneys *legislative service* House, 1956 and 1958. Senate, since 1960. Chairman of Welfare Committee, 1965. Vice chairman of Claims Committee, 1965 *church* Methodist *military service* United States Navy, Pacific and European Theatres *recreation* hunting and fishing *addresses* (business) 209 East Fourth Street, Panama City (residence) 224 Woodlawn Drive, Panama City (mailing) P. O. Box 1638, Panama City, 32401 *telephone* (business) 785-7456 (residence) 234-2897.



Dempsey J. Barron,
President pro Tempore

THE FLORIDA SENATE 1967

Verle A. Pope, *President*
 Dempsey J. Barron, *President pro Tempore*
 Edwin G. Fraser, *Secretary*
 LeRoy Adkison, *Sergeant-at-Arms*



LeRoy Adkison
 Sergeant-at-Arms



Edwin G. Fraser
 Secretary
 of the
 Senate

REUBIN O'D. ASKEW (D) 2nd District—Attorney



Askew

Kevin O'Donovan *affiliations* Rotary, past president of Western Division of the Children's Home Society of Florida, past president of Pensacola Oratorio Society, Board of Directors for Escambia Tuberculosis and Health Association, Board of Directors of YMCA, American Legion *legislative service* House of Representatives, 1958-1961. Senate since 1962. Chairman, Judicial Committee of Constitution Revision Commission. Chairman, Claims Committee, 1965. Vice chairman, County Organizations Committee, 1965 *other public service* Assistant County Solicitor of Escambia County, 1956-1958 *church* Presbyterian *military service* United States Army Paratroopers and United States Air Force *highlights* Selected by State Jaycees as "One of Florida's Five Outstanding Young Men, 1960." Voted by Legislative Press Corps as "One of the Ten Outstanding House Members, 1961," "One of Four Outstanding Senators in 1965 Senate," and runner-up in St. Petersburg Times poll for "Most Valuable Member in 1965 Senate" *recreation* tennis and golf *hobby* coin collecting *addresses*

(business and mailing) 250 Professional Building, Pensacola, 32501 (residence) 1860 Bayou Boulevard, Pensacola *telephone* (business) 432-1464

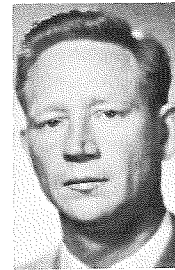
L. A. BAFALIS "Skip" (R) 33rd District—President of Adjusters International



Bafalis

Commerce, vice-chairman of Palm Beach County Red Cross, vice-president of Palm Beach Lions Club, Board of Governors of Ahepa, North Palm Beach-Palm Beach Gardens Jaycees, Riviera Beach Lake Park Jaycees, Islanders, honorary director of South Florida Fair and Exposition, Disaster chairman of Palm Beach County Red Cross, Fund chairman of West Palm Beach Red Cross, past president of Claims Men's Association *legislative service* House of Representatives, 1964-1966. Elected to Senate, 1966 *church* First Christian *military service* United States Army, Captain. Artillery *recreation* golf, fishing, and swimming *addresses* (business) P. O. Box 1031, 122 North County Road, Palm Beach (residence and mailing) 419 Marlin Road, North Palm Beach, 33403 *telephone* (business) 832-1719 (residence) 848-3650

DEMPSEY J. BARRON (D) 4th District—Attorney



Barron

b. March 5, 1922, Andalusia, Alabama. Florida, 1924 *e.* University of Florida, LL.B., 1954. Florida State University, B.S., 1956. Delta Theta Phi *m.* Louverne Hall of Panama City *c.* Stephen Dempsey and Stuart Judson *affiliations* Chamber of Commerce, board of directors of Cerebral Palsy, Florida and American Bar Associations, International Association of Insurance Counsel, Association of Insurance Attorneys *legislative service* House, 1956 and 1958. Senate, since 1960. Chairman of Welfare Committee, 1965. Vice chairman of Claims Committee, 1965 *church* Methodist *military service* United States Navy, Pacific and European Theatres *recreation* hunting and fishing *addresses* (business) 209 East Fourth Street, Panama City (residence) 224 Woodlawn Drive, Panama City (mailing) P. O. Box 1638, Panama City, 32401 *telephone* (business) 785-7456 (residence) 234-2897

WILLIAM D. BARROW "Wig" (D) 3rd District—Attorney, retail grocery, and farming and cattle



Barrow

b. August 20, 1931, Pensacola, Florida *e.* University of Florida, B.A., LL.B. (with honors), 1953. Phi Eta Sigma, Phi Kappa Phi *m.* Marguerite Enggelke of Crestview *c.* Kimberlea Ann *affiliations* Past president of Kiwanis Club, past president of Bar Society of the First Judicial Circuit, Okaloosa County Bar Society, Jaycees, member of Board of Governor's of Florida Junior Bar Association, past treasurer of Masonic Lodge *legislative service* Elected to Senate, 1966 *other public service* County prosecuting attorney since 1956. Crestview city attorney. Niceville city attorney *church* Methodist. Chairman, Board of Stewards *military service* United States Air Force *historical* George W. Barrow, Sr., father, served in Legislature in 1931 and is past Superintendent of Public In-

struction of Okaloosa County, Florida *highlights* Valedictorian of graduating class *recreation* hunting, fishing, and chess *addresses* (business) Gulf Federal Building, Crestview (residence) North Highway #85, Crestview (mailing) P. O. Box 486, Crestview, 32536 *telephone* (business) MU2-3150 (residence) MU2-4640

JOHN W. BELL "Jack" (R) 38th District—Attorney



Bell

b. September 16, 1916, New York, New York. Florida, 1946, *e.* Columbia University College, B.A., 1938. Columbia University Law School, LL.B., 1941. Swimming and tennis squads. *c.* Douglas Randolph, Susan Heather, and Holli Lei *affiliations* Kiwanis, American Legion, United States Propeller Club *legislative service* Elected to House, 1962 and 1966. Elected to Senate, 1967 *other public service* Chairman and member of Broward County Port Commission, 1952-1956. Chairman and member of Broward County Board of County Commissioners, 1957-1960 *church* Episcopal *military service* United States Navy, Atlantic and Pacific theatres. Retired with rank of Lieutenant Commander *recreation* swimming, tennis, and boating *addresses* (business and mailing) 100 Southeast Sixth Street, Fort Lauderdale, 33301 (residence) 2512 Barcelona Drive, Fort Lauderdale *telephone* (business) 524-8526 (residence) 523-1654

WILBUR H. BOYD (D) 31st District—Insurance brokerage

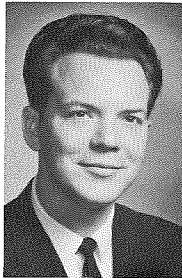


Boyd

b. February 6, 1926, Palmetto, Florida *e.* Stetson University and University of Tampa *m.* Fay Tuten of Jasper *c.* Daphne, Valerie, Brenda, and Wilbur, Jr. *affiliations* Past president of Kiwanis, past president of Junior Chamber of Commerce *legislative service* House of Representatives, 1958-1966. Elected to Senate, 1966 *other public service* Councilman for City of Palmetto, 1954-

1958. Vice-mayor for City of Palmetto, 1958. National Council of State Governments *church* Methodist. Chairman, board of stewards *military service* Merchant Marine *historical* H. E. Boyd, father, served in House of Representatives from Manatee County, 1940 *highlights* Good Government award from both Manatee County and Bradenton and Palmetto Junior Chamber of Commerce Clubs. Voted by members and press as one of the Outstanding Members of the House of Representatives. United States Jaycees award for Distinguished Service. Presented award by faculty and students for efforts on behalf of the Manatee Junior College. Sarasota-Manatee Phi Delta Kappa award for Outstanding Service for Public Education *recreation* golf, fishing, and hunting *addresses* (business and mailing) 726 Eighth Avenue, Palmetto, 33561 (residence) 2117 Seventh Street, Palmetto *telephone* (business) 722-4525 (residence) 722-2122

JOHN R. BROXSON (D) 1st District—Real estate and insurance *b.* June 10,



Broxson

1932, Holley, Florida *e.* Southwestern Assembly of God College, B.S., 1954. President of freshman and sophomore classes *m.* Christina Rose Cissna of Tulsa, Oklahoma *c.* Sylvia, Bobby, Cheryl, Bart, and Angela *affiliations* Jaycees, Board of Realtors, PTA, Kiwanis *legislative service* House of Representatives, 1963 Session. Elected to Senate, 1966 *other public service* Sheriff of Santa Rosa County *church* Assembly of God *historical* Bart D. Broxson, father, was Sheriff of Santa Rosa County *recreation* golf *addresses* (business) 31 Hoffman Center Drive, Gulf Breeze (residence) 420 Warwick, Gulf Breeze (mailing) P. O. Box 160, Gulf Breeze, 32561 *telephone* (business) 932-3581 (residence) 932-4398

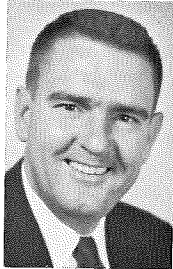
LAWTON M. CHILES, JR. (D) 28th District—Attorney *b.* April 3, 1930, Lakeland, Florida *e.* University of Florida, B.S.—



Chiles

B.A., 1952, LL.B., 1955. Florida Blue Key, Hall of Fame, Alpha Tau Omega, Phi Delta Phi *m.* Rhea Grafton of Coral Gables *c.* Tandy, Eddie, Gay, and Lawton, III *legislative service* House of Representatives, 1958-1966. Chairman, Judiciary A Committee, 1963 and 1965. Chairman, Apportionment Committee, 1961. Elected to the Senate, 1966 *church* Presbyterian *military service* United States Army, Artillery. Korea *recreation* hunting *addresses* (business and mailing) Polk Federal Building, P. O. Box 465, Lakeland (residence) 2419 Coventry, Lakeland *telephone* (business) 683-5903 (residence) 683-1232

RALPH R. CLAYTON (R) 14th District—Attorney and citrus grower *b.* April 17,



Clayton

1922, Erlanger, North Carolina. Florida, 1947 *e.* Brevard College. Stetson University, A.B., LL.B., 1949. Phi Alpha Delta *m.* Clara Brinkley of Charlotte, North Carolina *c.* Wiley, Jim, and Carol *affiliations* Mason, Shrine, Elks, VFW, Committee of 100 in DeLand, President's Council at Florida Southern College, DeLand Golf and Country Club *legislative service* Senate, 1967 *church* Methodist *military service* United States Army, World War II, Pacific Theatre *recreation* golf and gin rummy *addresses* (business and mailing) 209 Conrad Building, DeLand, 32720 (residence) 234 South Boundary Avenue, DeLand *telephone* (business) 734-4872 (residence) 734-5678

J. EMORY CROSS "Red" (D) 7th District—Attorney *b.* January 26, 1914, Iron



Cross

City, Georgia. Florida, 1935 *e.* University of Florida, BS-BA and LL.B., 1945. President of Student Body, Phi Alpha Delta, Sigma Phi Epsilon *m.* Dorothy Huffman of Live Oak *c.* Charles Emory, Gayle, and Betty Jean *affiliations* Past president of Young Democrats of Alachua County, Kiwanis, Elks, Moose, Knights of Pythias, Mason, past president of Alachua County Association for Mental Health, past first vice-president of Florida Association for Mental Health *legislative service* House of Representatives, 1952-1958. Senate, 1958-1966 and 1967-1968 *other public service* Assistant Attorney General, 1945-1946. County Prosecuting Attorney, 1948-1952 *church* Methodist, board of stewards *highlights* Twice winner of Allen Morris Award as "Member of Second Most Effective Legislative Delegation" and winner of same award as "Member of Most Effective Delegation," 1961 to 1963 *recreation* fishing *addresses* (business and mailing) P. O. Box 699, Gainesville, 32601 (residence) 3524 Northwest 10th Avenue, Gainesville *telephone* (business) 376-5266 (residence) 376-8539

RICHARD J. DEEB "Dick" (R) 22nd District—Contractor and Realtor *b.* Sep-

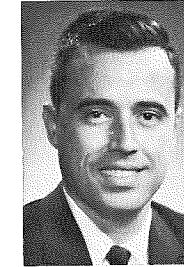


Deeb

tember 8, 1924, Tallahassee, Florida *e.* University of Notre Dame, B.S.C.E., 1947 *m.* Catalina Panayotti of Brooklyn, New York *c.* Alex Richard, Richard George, Teresa Marie, and Thomas Patrick *affiliations* Knights of Columbus, American Legion, AMVETS, Exchange Club, Tyrone Civic Association, St. Petersburg Board of

Realtors, ALSAC-St. Jude Hospital *legislative service* House of Representatives, 1963-1964. Elected to Senate, 1966 *other public service* Chairman, Minimum Housing Standard Board *church* Catholic. Holy Name Society of St. Jude *military service* United States Army *recreation* bowling and golf *addresses* (business) 701 58th Street, North, St. Petersburg (residence and mailing) 5750 Seventh Avenue, North, St. Petersburg, 33710 *telephone* (business) 345-4828 (residence) 347-2766

LOUIS de la PARTE, JR. (D) 26th District—Attorney *b.* July 27, 1929, Tampa,



de la Parte

Florida *e.* Emory University, B.A., 1950. University of Florida Law School, LL.B., 1953. President of University of Florida Student Body, Justice of Traffic Court, president of John Marshall Bar Association, vice president of Emory Senior Class, and secretary-treasurer of Sigma Alpha Epsilon *m.* Helen White of Tampa *c.* Louis David and Martha Ann *affiliations* Hillsborough County Cancer society and member of Board of Directors, Hillsborough County Mental Health Association, Police Athletic League, Greater Tampa Chamber of Commerce, and Hillsborough County Youth Council *legislative service* House of Representatives, 1963-1965. Statutory Revision Committee, 1965. Chairman, Juvenile Delinquency Interim Committee, 1965-1967. Elected to Senate, 1966 *other public service* Special Assistant Attorney General, Assistant County Solicitor, Assistant State Attorney, and acting Judge for City of Tampa *church* Catholic *military service* United States Air Force, Judge Advocate General's Office. Service in France. Observer of French Trials under NATO. Discharged as Captain *recreation* swimming *hobby* photography *addresses* (business and mailing) 725 East Kennedy Boulevard, Tampa 33602 (residence) 8003 North Rome Avenue, Tampa *telephone* (business) 223-4251 (residence) 935-7259

L. K. EDWARDS, JR. (D) 13th District—Timber, livestock and banking *b.* June 22, 1917, Irvine, Florida



Edwards

e. University of Florida, B.S.A., 1939. Florida Blue Key, Phi Delta Theta, secretary and treasurer of Sophomore Class, president of Agriculture Club, chairman of Gator Growl *m.* Marjorie Elizabeth Griggs *c.* L. K., III, Martha Jane, Elizabeth Ann, and John Martin *affiliations* Kiwanis, Mason, Shrine, Elks, Moose, Woodmen of the World, past president of University of Florida Alumni Association *legislative service* Senate, since 1955. Committee on Education, 1957 and 1959. Finance & Taxation Committee, 1961. Appropriations Committee, 1963 *other public service* Postmaster of Irvine, chairman of Marion County Democratic Committee *church* Baptist. Deacon, treasurer, and Sunday School teacher. Past president of Florida Baptist Brotherhood Convention. Past member of Executive Committee for six years of Southern Baptist Convention *address* Irvine, Florida, 32653 *telephone (business)* 591-1465 (residence) 591-1907

ROBERT H. ELROD "Bob" (R) 17th District—Citrus grower, president of Air Groves, Inc., director of Space Groves, Inc., and owner of an advertising agency *b.* March 15, 1926, Henryville, Indiana. Florida, 1960 *e.* Purdue University, B.S., 1951. President of Sigma Delta Chi, Delta Tau Delta *m.* Jean McAllister of Orlando *c.* Thomas Edward and Deborah Ann *affiliations* Director of Orlando Downtown Lions, Greater Orlando Chamber of Commerce, Orange County Sportsmen's Association *legislative service* House of Representatives, 1963-1965. Elected to Senate, 1966 *church* Episcopal *military service* United States Army Air Corps, World War II *recreation golf addresses (business)* 1 North Orange Avenue, Orlando (residence) 1000 Second Avenue, Windermere (mailing) P. O. Box 106, Windermere, 32786



Elrod

affiliations Director of Orlando Downtown Lions, Greater Orlando Chamber of Commerce, Orange County Sportsmen's Association *legislative service* House of Representatives, 1963-1965. Elected to Senate, 1966 *church* Episcopal *military service* United States Army Air Corps, World War II *recreation golf addresses (business)* 1 North Orange Avenue, Orlando (residence) 1000 Second Avenue, Windermere (mailing) P. O. Box 106, Windermere, 32786

telephone (business) 424-6285 (residence) 876-2510

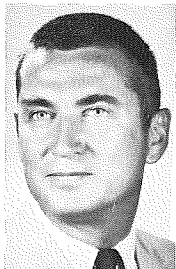
DICK FINCHER (D) 47th District—Oldsmobile dealer *b.* September 27, 1927, Rochester, New York. Florida, 1946 *e.* Culver Military School. Cornell University, B.A., 1949. Phi Delta Theta *m.* Gloria De Haven of Los Angeles, California *c.* Harry West and Faith Frances *affiliations* Past president of Eaton Foundation of the University of Miami, Miami Automobile Dealers Association, Orange Bowl Committee, and chairman of Heart Association of Greater Miami *legislative service* House of Representatives, 1963-1965. Elected to Senate in 1966 *church* Catholic *military service* United States Army, 2nd Lieutenant *recreation golf addresses (business and mailing)* 1740 Northeast Second Avenue, Miami, 33132 (residence) 1800 West 24th Street, Sunset Island #3, Miami Beach, 33140 *telephone (business)* 374-5961 (residence) 531-9918



Fincher

legislative service House of Representatives, 1963-1965. Elected to Senate in 1966 *church* Catholic *military service* United States Army, 2nd Lieutenant *recreation golf addresses (business and mailing)* 1740 Northeast Second Avenue, Miami, 33132 (residence) 1800 West 24th Street, Sunset Island #3, Miami Beach, 33140 *telephone (business)* 374-5961 (residence) 531-9918

JOHN J. FISHER "Jack" (R) 10th District—Physician *b.* September 17, 1923, Punxsutawney, Pennsylvania. Florida, 1953 *e.* Princeton University, A.B., 1947. University of Pittsburgh School of Medicine, M.D., 1948. Tennis and horseback riding *m.* Ellen Boyd Ludwig of Pittsburgh, Pennsylvania *c.* Ellen, Jr., Margaret, John, Dutch, Prudence, Sally, and Elizabeth *legislative service* Elected to Senate, 1966 *other public service* Advisory Board of Local Government Study Commission *church* Episcopal *military service* United States Naval Air Corps *highlights* Served aboard SS HOPE in Peru, 1962-1963, and in Ecuador, 1964. Director of Victory Over Polio Campaign, 1963-1964. Chairman of Public Health Committee of Duval County Medical Society. Chairman of sub-committee Inter-American Affairs of Florida Medical Association Board of Governors. Delegate to Florida Medical Association House of Delegates. Outstanding Citizen of Duval



Fisher

legislative service Elected to Senate, 1966 *other public service* Advisory Board of Local Government Study Commission *church* Episcopal *military service* United States Naval Air Corps *highlights* Served aboard SS HOPE in Peru, 1962-1963, and in Ecuador, 1964. Director of Victory Over Polio Campaign, 1963-1964. Chairman of Public Health Committee of Duval County Medical Society. Chairman of sub-committee Inter-American Affairs of Florida Medical Association Board of Governors. Delegate to Florida Medical Association House of Delegates. Outstanding Citizen of Duval

County 1964 award *recreation* tennis and private flying *addresses (business)* 836 Miami Road, Jacksonville, 32207 (residence) 13250 Mandarin Road, Mandarin (mailing) P. O. Box 105, Mandarin, 32217 *telephone (business)* EX8-0571 (residence) 268-9294

ELMER O. FRIDAY, JR. (D) 34th District—Lawyer *b.* February 23, 1924, Bartow, Florida *e.* Louisiana Polytechnic Institute. University of Oklahoma. University of Florida, LL.B., 1949. Kappa Sigma. Varsity football at Louisiana Tech and University of Oklahoma *m.* Betty Jo Guthrie of Punta Gorda *c.* Genie Lee, Jo Ellen, Richard Otto, and Mitchel Ann *affiliations* Shrine, Optimist, Scottish Rite *legislative service* Senate since 1962. Vice chairman, Interim Committee on Election Code, 1963. Chairman, Interim Committee on Election Code, 1965. Vice chairman, Interim Committee on Juvenile Delinquency, 1965 *other public service* Past president of Junior Bar of Florida. Vice president of County Judges Association *church* Methodist *military service* United States Navy *recreation* fishing, hunting, and swamp buggy trips *addresses (business)* Fort Myers Federal Building, Plaza Shopping Center, McGregor Boulevard, Fort Myers (residence) 8733 Beacon Street, Fort Myers, 33901 (mailing) P. O. Drawer X, Fort Myers, 33902 *telephone* ED4-2295



Friday

legislative service Senate since 1962. Vice chairman, Interim Committee on Election Code, 1963. Chairman, Interim Committee on Election Code, 1965. Vice chairman, Interim Committee on Juvenile Delinquency, 1965 *other public service* Past president of Junior Bar of Florida. Vice president of County Judges Association *church* Methodist *military service* United States Navy *recreation* fishing, hunting, and swamp buggy trips *addresses (business)* Fort Myers Federal Building, Plaza Shopping Center, McGregor Boulevard, Fort Myers (residence) 8733 Beacon Street, Fort Myers, 33901 (mailing) P. O. Drawer X, Fort Myers, 33902 *telephone* ED4-2295

L. P. GIBSON "Pete" (D) 6th District—Timberlands manager. Chairman, Citizens Bank of Perry. Director, Federal Land Bank Association *b.* November 1, 1922, Bainbridge, Georgia. Florida, 1923 *e.* University of Florida, A.A., 1942. Florida State University, B.S., 1953. Sigma Nu, Bacchus *c.* M. Gretchen (Mrs. Robert Dugger, III), Harriette E. (Mrs. James Knight), Paul H., and Robin A. *affiliations* Past president of Chamber of Commerce, past district commander of American Legion, honorary



Gibson

affiliations Past president of Chamber of Commerce, past district commander of American Legion, honorary

member of Future Farmers of America, past consul commander of Woodman of the World, Mason, past worthy patron of Order of Eastern Star, past president of Shrine Club, Board of Trustees and past president of 40 & 8 *legislative service* Senate, since 1962. Chairman, Forestry & Parks Committee. Vice-chairman, Welfare Committee, 1962-1966. Chairman, Game & Fish Commission, 1967 *other public service* Florida Board of Forestry, 1953-1957 *church* Methodist *military service* United States Naval Reserve *recreation* fishing and hunting *addresses (business and mailing)* P. O. Box 311, Perry, 32347 (residence) Southeast Corner Green and Jefferson Street, Perry, 32347 *telephone (business)* 458-3701 (residence) 457-5891

EDMOND J. GONG "Eddie" (D) 40th District—Attorney *b.* October 7, 1930, Miami, Florida *e.* Harvard College, A.B., cum laude, 1952. Harvard School of Law. University of Miami School of Law, LL.B., 1960. Phi Alpha Delta, Iron Arrow, Pi Sigma Alpha, University Proctor *m.* Sophie Vlachos of Hong Kong, B.C.C. *c.* Frances Fayline, Peter Joseph, Madeleine, Joseph Fred, II, and Edmond Joseph, Jr. *affiliations* Associate Legal Counsel of Junior Chamber International, vice president of Harvard Club, Miami Jaycees *legislative service* House of Representatives, 1963-1966. Elected to Senate, 1966 *other public service* Assistant United States Attorney, Southern District of Florida, 1960-1961 *church* Methodist *military service* United States Air Force, First Lieutenant. United States Air Force Reserve, Captain. Taipei, Taiwan *highlights* Governor of Florida Boys State and president of Boys Nation, 1947. Received 1963 Good Government Award of the Miami Junior Chamber of Commerce. Received Outstanding Young Man of Miami Award of the Miami Junior Chamber of Commerce in 1966. Florida Junior Chamber of Commerce 1966 Award as One of Five Outstanding Young Men of Florida *recreation* golf and tennis *hobby* photography and reading *addresses (business and mailing)* 1617 Alfred I. duPont Building, Miami, 33131 (residence)



Gong

legislative service House of Representatives, 1963-1966. Elected to Senate, 1966 *other public service* Assistant United States Attorney, Southern District of Florida, 1960-1961 *church* Methodist *military service* United States Air Force, First Lieutenant. United States Air Force Reserve, Captain. Taipei, Taiwan *highlights* Governor of Florida Boys State and president of Boys Nation, 1947. Received 1963 Good Government Award of the Miami Junior Chamber of Commerce. Received Outstanding Young Man of Miami Award of the Miami Junior Chamber of Commerce in 1966. Florida Junior Chamber of Commerce 1966 Award as One of Five Outstanding Young Men of Florida *recreation* golf and tennis *hobby* photography and reading *addresses (business and mailing)* 1617 Alfred I. duPont Building, Miami, 33131 (residence)

7751 Southwest 78 Court, Miami, 33143 telephone (business) 373-7755 (residence) 271-1567

BEN HILL GRIFFIN, JR. (D) 27th District—Citrus grower, processor, rancher, and banking *b.* October 20, 1910, Fort Meade, Florida *e.* University of Florida. Pi Kappa Phi *m.* Frances Pearce of Frostproof *c.* Mrs. Harriett Harris, Mrs. Sarah Jane Alexander, Mrs. Lucy Anne Troutman, Ben Hill Griffin, III, and Francie Griffin *affiliations* Mason, Shrine, and Jester



Griffin

legislative service House of Representatives, 1956-1963. Senate, 1965. General Legislation Committee, 1959. Citrus Committee, 1963. Agriculture, Oil & Natural Resources Committee, 1965 *other public service* School Trustee, School Advisory Committee, and member, Shippers Advisory Committee *church* Presbyterian *recreation* hunting and golf *addresses* (business and mailing) P. O. Box 368, Frostproof, 33843 (residence) 403 North Scenic Highway, Frostproof telephone (business) 635-2251 (residence) 635-2302

BILL GUNTER (D) 18th District—Agency manager of insurance company *b.*



Gunter

July 16, 1934, Jacksonville, Florida *e.* University of Florida, B.S.A., High Honors, 1956. University of Georgia. National president of Future Farmers of America, president of Baptist Student Union, managing editor of "Florida Alligator", majority whip of Executive Council, Florida Blue Key, University Hall of Fame, Sigma Alpha Epsilon, Alpha Zeta, Alpha Tau Alpha, Gamma Sigma Delta, Phi Kappa Phi, represented National F.F.A. as agricultural exchange student in Great Britain, 1954 *m.* Leslie Letitia Peaden of Live Oak *c.* Bartlett David and Joel Stephen *affiliations* Past president of Orlando Junior Chamber of Commerce, former director of Kiwanis, former vice-president of University of Florida Alumni

Association, past president of Young Democrats of Orange County, director of Central Florida Fair, University Club of Orlando, Orlando Jaycee-Colonels Organization, Central Florida Association of Life Underwriters, General Agents and Managers Association *legislative service* Elected to Senate, 1966 *other public service* Orlando Rehabilitation and Development Advisory Committee, 1966 *church* Baptist. Deacon and adult Sunday school teacher *military service* United States Army. Outstanding Honor Graduate of Basic Army Administration Course *historical* Edward V. McCaskill, great-grandfather, of Santa Rosa County served approximately twenty years in the House and Senate *highlights* Former panelist for five years on Central Florida Showcase, televised public service weekly show. Elected Commissioner of Agriculture of Boys' State, 1951. Served as page to Congressman Charles E. Bennett, 1952. State Jaycee award, "One of Florida's Five Outstanding Young Men, 1955." National winner of "Speak Up Jaycee" speech contest, 1964. Jaycee award, "One of Outstanding Young Men of America, 1965." Elected as youngest present member of Senate, 1966 *recreation* tennis, swimming, and reading *addresses* (business) 5353 East Colonial Drive, Orlando, 32807 (residence) 3206 Inverness Court, Orlando, 32806 (mailing) P. O. Box 20162, Orlando, 32814 telephone (business) 277-2740 (residence) GA5-1113

ROBERT M. HAVERFIELD "Bob" (D) 41st District—Attorney. Vice chairman,



Haverfield

Board of Directors of Manufacturer's National Bank of Hialeah *b.* October 26, 1918, Cadiz, Ohio. Florida, 1923 *e.* Ohio State University. University of Miami, B.A., LL.B., 1947. Sigma Chi, Phi Alpha Delta, Chief Justice of Honor Court, vice president of Law School *m.* Shirley O'Connor of Miami *c.* Betty Ann, Carol Lee, and Jill O'Connor *affiliations* American, Florida, and Dade County Bar Associations, American Judicature Society, Pilots Association of Greater Miami, Aviation Association, Kiwanis Club of Miami, National Council on Aging, Men-

tal Health Society of Greater Miami *legislative service* Senate since 1965. Chairman, Public Health "A", 1965 *other public service* Established Legal Aid Society of Dade County and served as first full-time legal aid attorney. Chief assistant city attorney for City of Miami. Dade County commissioner, 1958-1962, with two years as chairman *church* Lutheran *military service* United States Army Engineers, Civilian Technician *historical* Thomas Metcalfe, great-great grandfather, Representative in Kentucky Legislature, 1813. Representative of Kentucky in Congress, 1818-1828. Governor of Kentucky, 1828-1832. United States Senate, 1848. Drove first spike in first railroad west of the Appalachian Mountains going from Lexington to Frankfort, 1832 *recreation* pilot, horseback riding, swimming, hunting *addresses* (business and mailing) 1117 City National Bank Building, Miami, 33130 (residence) 10701 Southwest 62nd Avenue, Miami telephone (business) 373-7768 (residence) 667-9654

WARREN HENDERSON (R) 32nd District—Professional numismatist and investments *b.* November 14, 1927, Exeter, New Hampshire. Florida, 1955 *e.* Denison University, B.A., 1951. University of Florida College of Law. Phi Delta Theta *m.* Polly Schurr of Cleveland, Ohio *c.* Warren C., Wendy, and Susan *affiliations* Past exalted ruler of Elks, Mason, American Legion, past president of Venice area Chamber of Commerce, past director of Sarasota County Chamber of Commerce, chairman of United Appeal Drive, life member of South Sarasota County Memorial Hospital Association, Inc., life member of American Numismatic Association, Advisory Council of Order of DeMolay, International Oceanographic Foundation, S.C. Society for Conservation



Henderson

legislative service Senate, 1963-1966. House of Representatives, 1966. Elected to Senate, 1967. Chairman, Resolutions & Memorials Committee, 1963. Chairman, Motor Vehicles Committee, 1965. Interim committee on Roads & Highways, 1963-1965. Interim committee on Insurance & Traffic Safety, since 1965 *other public service*

County commissioner and chairman of Sarasota County, 1960-1963. Chairman of Manatee-Sarasota Airport Authority. Chairman, Sarasota County Water & Navigation Control Authority, 1960-1963. Juvenile Merit Board, 1960-1963. Sarasota County Planning & Zoning Committee, 1956-1957. Chairman, Sarasota County Civil Defense Council, 1960-1963. Vice-chairman West Coast Inland Navigation District, 1960-1963. Past director of Sarasota County Fair Association. Steering Committee for Project Manasota 88. Advisory Council for Sarasota County Alcoholic Rehabilitation Center *church* Presbyterian *military service* United States Navy *recreation* hunting, fishing, golf, and bowling *address* Golden Beach Boulevard, P. O. Box 1358, Venice, 33595 telephone 488-5941

GEORGE HOLLAHAN, JR. (D) 44th District—Attorney, automobile agency, public relations, and real estate *b.* May 1, 1919, Pittsburgh, Pennsylvania. Florida, 1932 *e.* Riverside Military Academy, University of Miami, B.S.-B.A., 1941. University of Miami, LL.B., 1949. Freshman and varsity football, 1938-1939. Director, Intramural Athletics, 1940-

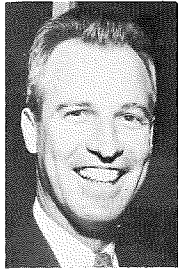


Hollahan

1941. Phi Kappa Alpha, Delta Theta Phi, and Student Senate *m.* Anne H. Thompson of Miami *c.* Kathleen Ames, Linley Anne, George L., III, and Michael Scott *affiliations* Elks, Moose, V.F.W., American Legion, Eagles, and Dade, Florida, and American Bar *legislative service* House of Representatives, 1957-1961. Senate, since 1963. Chairman, Veterans' Affairs Committee, 1959, Judiciary D Committee, 1961, and Corporations Committee 1963-1965. Legislative Council Committee, since 1961 and Chairman, Judiciary and Law Reform Committee, 1963 and General Legislation Committee, 1965. Chairman, Governmental Reorganization & Efficiency Committee, 1965-1967. Constitutional Revision Commission, 1965-1967 *other public service* Assistant State Attorney and Municipal Judge *church* Episcopal *military service* United States Navy, Pacific Theatre World War II *recreation* golf and bowling *addresses* (business and mailing) Suite 208, 7211

Southwest 62nd Avenue, South Miami, 33143 (residence) 5409 Riviera Drive, Coral Gables, 32146 telephone (business) 665-1175 (residence) MO1-5859

MALLORY E. HORNE (D) 5th District—Attorney *b.* April 17, 1925, Tavares,



Horne

Florida *e.* University of Tennessee, Florida State University, and University of Florida, LL.B., 1950. Chancellor of Honor Court, president of law class, and Florida Blue Key *m.* Anne Livingston of Tallahassee *c.* Mallory E., Jr. and David Albert *affiliations* Masons, Elks, and past president of Tallahassee Exchange Club *legislative service* House of Representatives, 1955-1963. Constitutional Amendments Committee, 1956 and 1959. Rules and Calendar Committee, 1961. Speaker, House of Representatives, 1963. Elected to Senate, 1966 *other public service* President of Tallahassee Memorial Hospital Board of Directors *church* Baptist *military service* United States Air Force, Captain. Pilot *highlights* Recipient: Allen Morris award as "Second Most Outstanding Legislator, 1963," St. Petersburg Times award, "Most Valuable Representative, 1963," and State Junior Chamber of Commerce Good Government Award, 1961. President of Junior Bar of Florida *recreation* hunting, fishing, and horseback riding *addresses* (business) 102½ South Monroe Street, Tallahassee (residence) 1488 Marion Avenue, Tallahassee (mailing) P. O. Box 1140, Tallahassee telephone (business) 224-0111 (residence) 222-3528

ELIZABETH J. JOHNSON "Beth" [Mrs. Peter] (R) 29th District—Housewife



Johnson

b. December 12, 1932, Catskill, New York. Florida, 1962 *e.* Barbizon School of New York City *m.* Peter Johnson of Syracuse, New York *c.* Blair, Dinah, and Brayton *affiliations* Cocoa Beach Women's Republican Club, Cape Canaveral Young Republicans, Cocoa Beach Woman's Club, Surfside Playhouse, Cape Canaveral Hospital Auxil-

ary, Press Club Wives of Canaveral *legislative service* Elected to Senate, 1966 *church* Presbyterian *hobby* flying, acting, and reading *address* 489 South Atlantic Avenue, Cocoa Beach, 32931 telephone 783-5851

RAY C. KNOPKE (D) 23rd District—President, Garden of Memories, Inc. and



Knopke

land development *b.* December 13, 1913, Chicago, Illinois. Florida, 1932 *e.* St. Petersburg Junior College and Ohio State University *m.* Virginia Pierce of St. Petersburg *c.* Susan Lazara, Keenan, and Skip *affiliations* Lions, Elks, Masons, Shrine, Florida Confederate Army, Chamber of Commerce, Committee of 100, and director of Temple Terrace Chamber of Commerce *legislative service* House of Representatives, 1963-1965. Vice chairman: Commerce & Reciprocal Trade Committee and Public Safety Committee. Elected to Senate, 1966 *other public service* Temple Terrace City Council, 1948-1956 and Temple Terrace Mayor, 1956-1962 *church* Presbyterian *military service* United States Air Force *recreation* golf and fishing *addresses* (business and mailing) 4401 East Lake Avenue, Tampa (residence) 515 Riverhills Drive, Temple Terrace telephone (business) 626-3161 (residence) 988-2341

DAVID C. LANE "Dave" (R) 36th District—Neurosurgeon and insurance agency



Lane

b. June 17, 1927, Medford, Massachusetts. Florida, 1956 *e.* University of Tennessee, B.S., 1948, M.D., 1951. University of Wisconsin D.A.B., 1956. Sigma Chi, captain of swimming team, 1946 and 1947 *m.* Benita Johnson of Ft. Lauderdale *c.* Ben, Brett, and Helen *affiliations* Navy League Council, board of directors for Republican Citizens' Committee, Museum of Arts, Fort Lauderdale Historical Society, Friends of the Library, past chairman of Young Republicans, past Republican Precinct Committeeman, Chamber of Commerce, Com-

mittee for Aid to Handicapped, United Cerebral Palsy Board, Y.M.C.A. *legislative service* Senate, 1967 *church* Episcopal *military service* United States Navy, Lieutenant Commander. Florida National Guard, retired Major *highlights* Award, "Five Outstanding Young Men in Florida". Diplomat for American Board of Neurological Surgeons *recreation* scuba diving, flying, skiing, auto racing, and sailboat racing *addresses* (business and mailing) 500 Southeast 17th Street, Fort Lauderdale, 33316 (residence) 1233 North Rio Vista Boulevard, Fort Lauderdale telephone (business) 524-1543 (residence) 522-6585

JOHN E. MATHEWS, JR. "Jack" (D) 8th District—Attorney *b.* June 20, 1920,



Mathews

Jacksonville, Florida *e.* Emory University, B.A., 1942. Harvard Law School, LL.B., 1948. Phi Beta Kappa, president of Sigma Chi, president of Omicron Delta Kappa, chairman of Honor Council, president of Student Body, intercollegiate debater, designated best debater in Grand Eastern Tournament sophomore year, Balfour award as most representative Sigma Chi in Southeast, Lincoln's Inn Society, Root Law Club, honorary member of Florida Blue Key, Phi Alpha Delta *m.* Gwendolyn Howard of Charleston, South Carolina *c.* Josiah Game, Kimball Irene, Barbara Alice, and John Elie, III *affiliations* AAOMS, 32° Mason, Exchange Club, Chamber of Commerce, director of 1956 March of Dimes, Community Chest, president of Black Camel Fund of Morocco Temple, Gator Bowl Association, trustee of Emory University, Fellow of International Academy of Trial Lawyers *legislative service* House of Representatives, 1956-1961. Senate since 1962. Chairman, Constitutional Amendments, 1965. Vice chairman, Judiciary A Committee, 1965. Chairman, Constitutional Amendments Committee, 1963 *other public service* Deputy Commissioner of Florida Industrial Commission, 1950-1951 *church* Methodist *military service* United States Navy, World War II. Lieutenant Commander in Naval Reserve. USS Kidd. Eight major battles. Bronze Star Medal *historical* John E. Mathews, father, served in House of Representatives, 1929

and 1931, the Senate, 1943, 1945, 1947, and 1949, and became Justice of the Supreme Court, 1951 through January of 1955, when he became Chief Justice and held this position until his death in April of 1955 *highlights* Valedictorian, Robert E. Lee High School, 1938. "Most Promising Freshman," 1957. "Most Effective in Committee," 1959. "Most Effective in Debate," 1961. "Most Outstanding Member of House," 1961. Good Government Award by Jacksonville and Florida Junior Chambers of Commerce. "Most Valuable Member of Legislature," 1963. "Most Outstanding First-Timer in Senate," 1963. "Most Effective Member in Debate," 1965. "Most Effective Member in Committee," 1965. "Most Effective Flaw-Finder in Senate," 1965 *addresses* (business and mailing) 1530 American Heritage Life Building, Jacksonville, 32202 (residence) 4816 Malpas Lane, Jacksonville, 32210 telephone (business) 354-0624 (residence) 389-6868

JOSEPH A. McCLAIN, JR. "Joe" (R) 24th District—Attorney *b.* May 1, 1903, Ring-



McClain

gold, Georgia. Florida, 1957 *e.* Mercer University, B.A., 1925, LL.B., 1924, LL.D. (honorary) 1941. Yale, J.S.D., 1929. Tulane University, LL.D., (honorary), 1944. Pi Kappa Phi, Phi Alpha Delta, Order of Coif. Football *m.* Laura Burkett of Macon, Georgia *c.* Joseph A. III, David and Betty McClain Anderson *affiliations* Georgia, Missouri, Florida, North Carolina, American, St. Louis and United States Supreme Court Bar Associations *legislative service* Senate, 1967 *church* Baptist *highlights* Professor of Law at Mercer University, 1926-1927, Dean at Mercer University Law School, 1927-1933. Professor of Law at University of Georgia, 1933-1934. Dean and professor of Law at University of Louisville, 1934-1936. Dean of Washington University Law School, 1936-1942. Dean of Duke University Law School, 1950-1956. Instructor at Stetson University Law School, 1956. Chairman of citizens committee which successfully campaigned for charter amendment establishing Merit System for St. Louis, 1941. Chairman of Special Committee ap-

pointed by State Bar of California to make survey of legal education and admissions to bar of California Law Schools, 1948-1949, and Florida, 1954. Contributor of articles in various law journals *recreation* golf *addresses* (business and mailing) 615 Marine Bank Building, Tampa, 33602 (residence) 125 Baltic Circle, Tampa 33606 *telephone* (business) 229-1981 (residence) 255-0924

DENNIS J. PATRICK O'GRADY (R) 15th District—Building contractor and nurseryman



O'Grady *b.* December 9, 1943, Brooklyn, New York, Florida, 1945 *affiliations* Jaycees, Inverness Retail Merchants Association, Citrus County Friends of the Library Association, Citrus County Humane Society, Young Americans for Freedom, Chamber of Commerce *legislative service* Senate, 1967 *church* Catholic *recreation* hunting, swimming and tennis *addresses* (business and mailing) U. S. 41 South, Inverness, 32650 (residence) South Apopka Avenue, Inverness *telephone* 726-1575

T. TRUETT OTT (D) 25th District—Attorney



Ott *b.* October 25, 1920, Osyka, Mississippi, Florida, 1925 *e.* Hinds Junior College. University of Florida, LL.B., 1948. Phi Delta Theta, Phi Alpha Delta, National Scholastic Honorary Legal Fraternity *m.* Anita Williams of Tallahassee *c.* Sandra Ellen, Thomas William, Gary Truett, and Hugh Justin *affiliations* President and board of directors for YMCA, chairman of Southern Area Council of Presidents' Workshop, Ye Mystic Krewe of Gasparilla, 32° Mason, University of South Florida Foundation, Tampa Art Institute, executive board of Tampa-Hillsborough County Bar Association *legislative service* Elected to Senate, 1966 *church* Baptist *military service* United States Air Force, Lt. Col. *highlights* Contributing editor to Florida Civil Trial Practice Manual *recreation* tennis, handball, hunting, and fishing *hobby* bridge *addresses* (business and mail-

ing) 101 East Kennedy Boulevard, Tampa, 33602 (residence) 614 South Oregon Avenue, Tampa *telephone* (business) 223-3991 (residence) 257-1261

KENNETH PLANTE "Ken" (R) 16th District—Citrus grower, president of Central Florida Drum, Inc., and vice president of L. D. Plante, Inc.



Plante *b.* December 17, 1939, Orlando, Florida *e.* University of Florida track *m.* Sandra Lee Crawford of Winter Park *c.* Kenny, Jimmy, Melanie, Jon, and Mark *affiliations* Past director and first vice president of Winter Park Jaycees, Chamber of Commerce, Seminole Long Range Planning Committee, Industrial Committee, Central Florida Hotel and Restaurant Association, YMCA, Indian Guides *legislative service* Senate, 1967 *church* Catholic *recreation* track, fishing, and hunting *addresses* (business) L. D. Plante, Inc., Orlando (residence and mailing) 1217 Wakefield Drive, Altamonte Springs, 32701 *telephone* 831-1050, Altamont Springs

VERLE A. POPE (D) 12th District—Real estate and insurance



Pope *b.* December 12, 1903, Jacksonville, Florida *e.* University of Florida. Phi Kappa Tau. Freshman football, basketball, and swimming *m.* Edith Taylor of St. Augustine (deceased) *c.* Mrs. Richard O. Watson (Margaret) of St. Augustine *affiliations* Kiwanis, Elks, Moose, VFW, American Legion, and Shrine *legislative service* Senate, since 1948. Appropriations, Education, Welfare, Pension-Retirement, Claims, and Governmental Organization Committees *other public service* Board of County Commissioners and District Welfare Board *church* Episcopal *military service* Cadet, Army Air Force. United States Army Air Force. Navigator and Combat Intelligence Officer. Recipient of Presidential Medal, Croix de Guerre, and European Air Medal with eight clusters *recreation* hunting, fishing, and golf *addresses* (business) Charlotte and Treasury Streets, St. Augustine (residence) 55 Dol-

phin Drive, St. Augustine (mailing) P. O. Box 519, St. Augustine, 32084 *telephone* (business) 829-9061 (residence) 829-3245

RALPH R. POSTON, SR. (D) 46th District—Contractor. President of Poston Bridge & Iron, Inc.



Poston *b.* January 2, 1923, Miami, Florida *e.* University of Miami and University of Houston *m.* Carolyn Sue Davis of Miami *c.* Ralph R., Jr., Mrs. Dorothy Barrier, and Sherry Lynne *affiliations* Mason, Mahi Shrine, Scottish Rite, Kiwanis, Moose, Tiger Bay Club, DAV, past president of Lions, president of Steel & Ornamental Erectors Association of South Florida, Inc., University of Miami Citizens Board, Advisory Board of Goodwill Industries, Engineering Contractor's Association, Advisory Board of Baptist Hospital, Business, Inc., Florida Road Builders, Sons of the American Revolution, Committee of 21, director of South Dade Chamber of Commerce *legislative service* House of Representatives, 1964-1966. Elected to Senate, 1966 *church* Methodist *military service* United States Navy *highlights* Started Poston Bridge & Iron, 1950 *recreation* golf, swimming, handball and fishing *addresses* (business and mailing) 3103 Northwest 20th Street, Miami, 33142 (residence) 6282 Southwest 133rd Street, Miami *telephone* (business) 635-7303 (residence) 666-0465

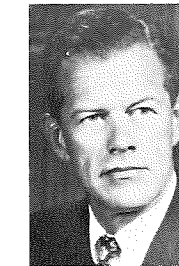
C. S. REUTER "Cliff" (R) 30th District—Launch complex engineer for Pan American World Airways, Inc., Cape Kennedy



Reuter *b.* November 15, 1927, Bronxville, New York, Florida, 1958 *e.* University of New Hampshire, B.S., 1951 *m.* Marilyn Byard of Greenland, New Hampshire *c.* Clifford, IV, George, II, Carolyn, Sara and Philip, Suzanne and Deborah Hall *affiliations* Indian River Shell Fish Association, Atlantic Coast League, Chairman, Brevard County Republican Executive Committee, Society for Advancement of Management *legislative service* Senate, 1967 *other public service* GOP

County Chairman *church* Congregational *military service* United States Army, World War II *historical* John B. Hull, grandfather, was state senator in Massachusetts *recreation* fishing and sailing *addresses* (business) Pan American World Airways, Launch Complex Staff, Cape Kennedy (mailing) P. O. Box 162, Sharpes, 32959 *telephone* (business) 853-9671

HENRY SAYLER (R) 21st District—President of Security Planning of Florida, Inc.



Sayler *b.* January 16, 1921, Savannah, Georgia, Florida, 1949 *e.* United States Military Academy, B.S., 1943. Soccer, polo, lacrosse, tennis, debating *m.* Wyline Chapman of Columbus, Georgia *c.* Lee, Alan, Robin, and Van *affiliations* Kiwanis, Chamber of Commerce *legislative service* Elected to Senate, 1966 *church* Methodist *military service* United States Air Force, Fighter Pilot. Distinguished Flying Cross. Air Medal with seven clusters *highlights* Commander of First Guided Missile Squadron, 1949-1951. White House Aide, 1945-1946 *recreation* badminton—Florida Doubles Champion *addresses* (business and mailing) 333 31st Street, North, St. Petersburg, 33713 (residence) 220 Rafael Boulevard, Northeast, St. Petersburg *telephone* (business) 896-2714 (residence) 894-5749

ROBERT L. SHEVIN "Bob" (D) 43rd District—Attorney, instructor of Law Review Institute, and bank director



Shevin *b.* January 19, 1934, Miami, Florida *e.* University of Florida, B.A., 1955. University of Miami, LL.B., 1957 (magna cum laude). Second in nation as Southern Collegiate Debate Champion, president of Pi Lambda Phi, secretary of Men's Affairs, secretary of Religious Affairs for President's Cabinet, Florida Blue Key, Hall of Fame, award for highest male law graduate scholastically, editor of Miami Law Quarterly, president of Stu-

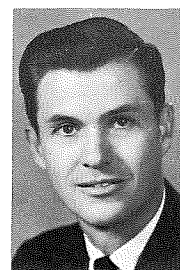
dent Bar Association, president of Bar and Gavel Legal Society, and State Moot Court Champion *m.* Myrna Bressack of Miami *c.* Laura Dawn and Hilary Beth *affiliations* Chairman of Miami Economic Advisory Board, legal counsel for Dade County Legislative Delegation, Miami-Dade County Chamber of Commerce, Local Market Development Committee of Dade County, Government Research Council of Dade County, chairman of Florida Fair Share Committee for Roads and Representation, Industrial Development Council of Dade County, Dade County Young Democrats Club, Miami Beach Democratic Club, president of Greater Miami Pi Lambda Phi Alumni Association, Democrats Association of Hialeah, chairman of Courts Budget Committee of Dade County, Board of Directors University of Florida Alumni Association, University of Miami Alumni Association, American, Florida, and Dade County Bar Associations, Florida Trial Lawyers Association, National Panel of American Arbitration Association, Board of Directors of South Florida Epilepsy Foundation, president and board chairman of Sertoma Club of Miami, Dade County Chapter of National Multiple Sclerosis Society, Men's Club of the Children's Cardiac Hospital, Board of Directors of the Youth Employment Service of Dade County, Board of Directors of the Miami Youth Symphony, Board of Directors of Tiger Bay Club, YMCA, YMHA, B'nai B'rith, Dade County Mental Health Society, Jewish Family and Children's Service, discussion leader for University of Miami Adult Education Program *legislative service* House of Representatives, 1965. Elected to Senate, 1966 *church military service* United States Army Reserve, Captain *highlights* Allen Morris award as "Most Outstanding First Session Member of 1965 House" and St. Petersburg Times award as "One of Ten Most Valuable Members of the 1965 House" *recreation* tennis and handball *addresses* (business and mailing) 346 Seybold Building, Miami (residence) 4901 Southwest 87th Court, Miami *telephone* (business) 373-8721 (residence) 274-0777

TOM SLADE (R) 9th District—Liquefied petroleum gas, retail and wholesale. Mechanical construction. President of Slade Gas Company, Slade Petroleum Company, and Slade Heating and Air Conditioning Company



b. March 13, 1936, Albany, Georgia. Florida, 1946 *e.* Emory. Southern Institute of Technology, B.S.E., 1957. President of student body *m.* Judith Ann Griggs of Cornelia, Georgia *c.* Tommy, Jeff, and Jack *affiliations* Rotary, Navy League, Sales & Marketing Executive, YMCA, Homebuilders Association, Ponte Vedra Club, The Deerwood Club, Selva Marina Country Club, Traffic Club, Jacksonville Chamber of Commerce, Florida State Chamber of Commerce, past president of Florida LP Gas Association, National LP Gas Association *legislative service* House of Representatives, 1962-1964. Elected to Senate, 1966. Vice-chairman, Education-Public Schools Committee, 1963 *church* Presbyterian *recreation* golf, fishing, skin diving, and hunting *addresses* (business) 8486 Ramona Boulevard, Jacksonville (residence) 8129 Beach Boulevard, Jacksonville (mailing) P. O. Box 6223, Jacksonville, 32205 *telephone* (business) 781-4055 (residence) 725-2611

W. THOMAS SPENCER "Tom" (D) 45th District—Attorney



b. August 6, 1928, Crawfordsville, Indiana. Florida, 1947 *e.* Wabash College and University of Miami, A.B., 1950, LL.B., 1956. Beta Theta Pi, Alpha Phi Omega, Pi Kappa Delta, Omicron Delta Kappa, Iron Arrow, Phi Kappa Phi, president of Debate Council, and president of Student Body Government, 1956-1957 *affiliations* Dade, Florida, and American Bar

Associations, Dade County Young Democrats, and Government Research Council of Miami-Dade Chamber of Commerce *legislative service* House of Representatives, 1963-1965. Elected to Senate, 1966 *church* Presbyterian *military service* United States Navy, 1952-55. Lieutenant United States Naval Reserve *addresses* (business and mailing) 1105 Biscayne Building, Miami, 33130 (residence) 2472 Inagua Avenue, Miami, 33133 *telephone* (business) 377-0236 (residence) 446-9764

WILLIAM T. STOCKTON, JR. "Bill" (R) 11th District—Attorney



b. November 20, 1918, Atlanta, Georgia. Florida, 1919 *e.* Princeton University, A.B., 1941. University of Florida Law School, LL.B., 1948. Phi Delta Phi *m.* Bettie B. Brewster of New Orleans, Louisiana *c.* William T., III *affiliations* Jacksonville Chamber of Commerce, and Jacksonville, Florida, and American Bar Associations *legislative service* Senate, 1967 *other public service* Mayor's Water Pollution Committee, Board of Directors for Americans for Constitutional Action, charter member. GOP State Committeeman for Duval County *church* Episcopal *military service* United States Army, Captain. Bronze Star, Combat Infantry Badge, and Purple Heart *historical* James M. Baker, great-grandfather, served as Confederate Senator. John N. C. Stockton, grandfather, member of Legislature in 1896 *recreation* golf and bridge *addresses* (business and mailing) 1309 Barnett Bank Building, Jacksonville, 32202 (residence) 4422 Chippewa Drive, Jacksonville *telephone* (business) 355-3675 (residence) 389-6954

CHESTER W. (Chet) STOLZENBURG (R) 39th District—Insurance counselor



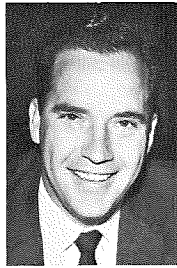
b. February 8, 1911, Elyria, Ohio *e.* Miami University. Ohio State University *m.* Roberta Pierce of Birmingham, Ohio *c.* Mrs. Andrea Chase, Bing Stolzenburg *affiliations* Kiwanis, Christian Businessmen's Association, Lutheran Laymen's League, Broward County Life Underwriters Association, Ft. Lauderdale Chamber of Commerce *legislative service* House of Representatives, 1963-1964. Elected to Senate, 1966 *church* Lutheran *addresses* (business and mailing) P. O. Box 10276, Wilton Manors Branch, Ft. Lauderdale, 33305 (residence) 4781 Northeast 16 Avenue, Oakland Park, Ft. Lauderdale *telephone* 566-0985

RICHARD B. STONE "Dick" (D) 48th District—Attorney



b. September 22, 1928, New York, New York. Florida, 1929 *e.* Harvard, A.B., 1949, cum laude. Columbia University Law School, LL.B., 1954. Varsity swimming team at Harvard *m.* Marlene Singer of Miami *c.* Nancy, Amy and Elliott *affiliations* Alianza Inter-Americana, Standard Club, Moose, Boy Scout Council *legislative service* Senate, 1967 *church* Jewish *addresses* (business and mailing) 25 West Flagler Street, Miami, 33130 (residence) 11880 Southwest 63rd Avenue, Miami *telephone* (business) 377-9351 (residence) 667-3667

JERRY THOMAS (D) 35th District—Investment banking and commercial banking *b.* April 30, 1929, West Palm Beach, Florida



Thomas

e. Palm Beach Junior College, Florida State University, B.S. and A.A., 1952, and Graduate School of Government, Florida State University. Sigma Nu, Omicron Delta Kappa, Gold Key, Pi Alpha Sigma, Hall of Fame, senator and chairman of Men's Judiciary, and president of Letterman's Club *m.* Jennie Hair of Tampa *c.* Robbie, Larry, Kenny, Jerry, and Cindy *affiliations* Palm Beach County chairman of United States Savings Bond Division, Florida State University Alumni Association, director of Children's Home Society of Florida, director of South Florida Fair & Exposition, Board of Advisors member for the Florida State University Foundation, Inc., director for Florida Heart Association, chairman of the Board for Heart Association of Palm Beach and Martin Counties, Board of Governors of Florida Vision Foundation, member of the Advisory Board of the J. Edwin Larson Foundation for Insurance Education, Izaak Walton League of America, Greater West Palm Beach and Northern Palm Beach County Chamber of Commerce, past president of Palm Beach Lions Club, American Legion, Tiger Bay Club, Islanders, and Florida and American Bankers Association. Member, Board of Governors, National Association of Small Business Investment Companies *legislative service* House of Representatives, 1961-1963. Senate, 1965. Chairman of Judiciary B Committee, 1963. Chairman of Building and Loan Associations Committee, 1965. Vice chairman of Corporations Committee, 1965 *other public service* director and administrator of Florida Securities Commission *church* Presbyterian, elder. Member of The Presbytery of East Florida, Synod Committee of Church and Society, and Synod of Florida *military service* United States Navy, Midshipman. United States Marine Corps, Captain. Marine Corps Reserve Officers' Association *highlights* Recipient: Allen Morris award, "Most Outstanding First Term Member of the Florida House of Representatives, 1961", "Most Outstanding First Term Mem-

ber of the Florida Senate, 1965". Florida Junior Chamber of Commerce award, "Five Outstanding Young Men of Florida, 1961". Palm Beach County "Good Government Award", 1962 and 1963. United States Treasury Department "Freedom Bond Award", 1962, 1963, 1964, and 1965. The Palm Beach County Restaurant Association "Certificate of Appreciation, 1962." Silver and Gold Medallions from the Heart Association of Palm Beach and Martin Counties. The Palm Beach Junior College Service award, 1966. Recipient of Loyalty Day Citation from the V.F.W. *recreation* boating, skin diving, and fishing *addresses* (business) First Marine Bank of Riviera Beach, Riviera Beach (residence) 612 Australian Circle, Lake Park (mailing) P. O. Box 9788, Riviera Beach, 33404 *telephone* (business) 844-4351 (residence) 848-2337

CHARLES H. WEBER "Chuck" (R) 37th District—Realtor *b.* October 5, 1923, Detroit, Michigan. Florida, 1951 *e.* University of Detroit, B.S., 1947, cum laude. University of Minnesota. American University, Biarritz, France. Treasurer of Student Union, sports editor of "The Varsity News", secretary of Delta Pi Kappa *m.* Elaine M. Zanger of Detroit, Michigan *c.* Judith Ann, Susan Joy, Charles Henry, Thomas Michael, Carol Joanne, and Laura Anne *affiliations* Past vice president of Fort Lauderdale Junior Chamber of Commerce, past vice president of Fort Lauderdale Chamber of Commerce, past president of Fort Lauderdale Board of Realtors, past vice president of Florida Association of Realtors *legislative service* Senate, 1967 *other public service* Past member of Fort Lauderdale Planning and Zoning Board *church* Catholic *military service* United States Army, World War II *highlights* "Realtor of the Year, Fort Lauderdale, 1960" and four consecutive one-year terms on Legislative Committee of Florida Association of Realtors *recreation* piano, tennis and golf *address* 2408 Northeast 26th Avenue, Fort Lauderdale, 33305 *telephone* (business) 564-2317 (residence) 566-9881



Weber

LEE WEISSENBORN (D) 42nd District—Attorney *b.* March 19, 1929, St. Louis, Missouri. Florida, 1938



Weissenborn

e. University of Florida, B.S.J., 1951, LL.B., 1956. Student Government, Executive Council, associate editor, columnist and staff member of Florida Alligator, editor of the "Shuffle," chairman of Gator Party, Phi Alpha Delta, Gator Pep Club, executive secretary to president of Student Body *m.* Judith Asha Lyon of Miami *c.* James, Carol, and Stephen *affiliations* Miami-Dade Chamber of Commerce, Hialeah-Miami Springs Chamber of Commerce, past commander of Coral Gables American Legion Post, Tiger Bay Club, and American, Florida, and Dade County Bar Associations *legislative service* House of Representatives, 1963-1965. Vice-chairman, Public Lands & Parks Committee, 1965. Elected to Senate, 1966. Vice-chairman Mental Health Retardation, State Institutions Committee, 1967 *other public service* Delegate-at-large to 1960 Democratic National Convention. Campaign chairman of Democratic Executive Committee of Dade County, 1964 *church* Episcopal *military service* United States Marine Corps, Captain *highlights* Treasurer of Young Democratic Clubs of Florida, 1956-1958. President of Young Democratic Club of Dade County, 1957-1959. President of Young Democratic Clubs of Florida, 1959-1961. Host chairman of 1961 Young Democrats National Convention. Member of National Committee of Young Democratic Clubs of America, 1959-1961. State get-out-the-vote chairman of Kennedy-Johnson Campaign, 1960. Dade County precinct organization of Johnson-Humphrey Campaign, 1964. Named Outstanding State Young Democrat by Young Democrats of Florida, 1961-1962. Honored by student body of Miami-Dade Junior College as "A Friend of Students" in 1965 for work in passing scholarship funds bill. Honored by Florida Agricultural Council for work in 1965 Session *addresses* (business and mailing) Suite 311 Biscayne Building, 19 West Flagler Street, Miami, 33130 (residence) 6726 Orchid Drive, Miami Lakes *telephone* (business) FR4-4141 (residence) 821-9661

HAROLD S. WILSON (R) 20th District—Attorney *b.* September 28, 1921, Chicago, Illinois. Florida, 1958 *e.* University of Chicago, B.A., Harvard Law School, LL.B., 1953. President of senior class, University of Chicago. Delta Sigma Pi *m.* Mary Ellen Rusin of Clearwater *c.* Jennie Ellen and Janice Mary *legislative service* Elected to Senate, 1966



Wilson

other public service Former Assistant Public Defender of Pinellas County, Associate Municipal Judge of Indian Rocks Beach, and former City Attorney of Safety Harbor *church* Catholic *military service* United States Army Signal Corps, World War II. Served in New Guinea and Philippines *addresses* (business) 321-B Indian Rocks Road, Belleair Bluffs, Largo (residence and mailing) 460 Ponce DeLeon Boulevard, Clearwater, 33516 *telephone* (business) 584-7637 or 584-7638 (residence) 584-0578

C. W. YOUNG "Bill" (R) 19th District—Insurance agent *b.* December 16, 1930, Harmorville, Pennsylvania. Florida, 1945 *m.* Marian Ford of St. Petersburg *c.* Pamela Kay, Terry Lee, and Kimber *affiliations* Moose, Jaycees, state chairman and national committeeman of Young Republicans, Aircraft Owners & Pilots Association, Independent Insurance Agents Association of Florida and



Young

St. Petersburg *legislative service* Senate, since 1960 *other public service* Assistant Sergeant-at-Arms of GOP National Convention, 1956 and 1960 *church* Methodist *military service* Florida National Guard *highlights* Commission of Kentucky Colonel, 1963. American Legion award for Meritorious Service, 1963. United States Jaycee award, "One of the Outstanding Young Men of America, 1964" *recreation* boating and aviation *hobby* photography *addresses* (business) 402 Security Federal Building, 2600 Ninth Street, North, St. Petersburg (residence and mailing) 7851 45th Street, North, Pinellas Park, 33565 *telephone* (business) St. Petersburg, 896-0669 (residence) Pinellas Park, 544-5157

COMMITTEE
BILL CLERK

PRESIDENT'S
ROSTRUM

SENATOR
VERLE A. POPE

PRESIDENT'S
DESK

DESK

ASSISTANT
BILL CLERK

SPEAKING
WELL

READING
SECRETARY

SECRETARY

EDWIN G. FRASER

10
SENATOR
FISHER

1
SENATOR
BROXSON

6
SENATOR
GIBSON

PRESIDENT
PRO TEM
4
SENATOR
BARRON

2
SENATOR
ASKEW

20
SENATOR
WILSON

18
SENATOR
GUNTER

16
SENATOR
PLANTE

14
SENATOR
CLAYTON

PRESIDENT
12
SENATOR
POPE

30
SENATOR
REUTER

28
SENATOR
CHILES

26
SENATOR
de la PARTE

24
SENATOR
McCLAIN

22
SENATOR
DEEB

40
SENATOR
GONG

38
SENATOR
BELL

36
SENATOR
LANE

34
SENATOR
FRIDAY

32
SENATOR
HENDERSON

48
SENATOR
STONE

46
SENATOR
POSTON

44
SENATOR
HOLLAHAN

42
SENATOR
WEISSBORN

8
SENATOR
MATHEWS

3
SENATOR
BARROW

5
SENATOR
HORNE

7
SENATOR
CROSS

9
SENATOR
SLADE

11
SENATOR
STOCKTON

13
SENATOR
EDWARDS

15
SENATOR
O'GRADY

17
SENATOR
ELROD

19
SENATOR
YOUNG

21
SENATOR
SAYLER

23
SENATOR
KNOPKE

25
SENATOR
OTT

27
SENATOR
GRIFFIN

29
SENATOR
JOHNSON

31
SENATOR
BOYD

33
SENATOR
BAFALIS

35
SENATOR
THOMAS

37
SENATOR
WEBER

39
SENATOR
STOLZENBURG

45
SENATOR
SPENCER

47
SENATOR
FINCHER

41
SENATOR
HAVERFIELD

43
SENATOR
SHEVIN



Florida Legislative Council

REPRESENTATIVE LOUIS WOLFSON, *Chairman*
SEN. GEORGE HOLLAHAN, *Vice-Chairman*

Senate Members

VERLE A. POPE
President of Senate
St. Augustine, Florida

REUBIN O'D. ASKEW
Pensacola, Florida

J. EMORY CROSS
Gainesville, Florida

JOHN E. MATHEWS, JR.
Jacksonville, Florida

L. K. EDWARDS, JR.
Irvine, Florida

W. D. GUNTER, JR.
Orlando, Florida

LOUIS DE LA PARTE, JR.
Tampa, Florida

BEN HILL GRIFFIN, JR.
Frostproof, Florida

C. W. YOUNG
Pinellas Park, Florida

ELMER O. FRIDAY, JR.
Ft. Myers, Florida

ROBERT HAVERFIELD
Miami, Florida

GEORGE L. HOLLAHAN
South Miami, Florida

House Members

RALPH TURLINGTON
Speaker of House
Gainesville, Florida

GORDON W. WELLS
Pensacola, Florida

LEON N. McDONALD
Live Oak, Florida

FRED H. SCHULTZ
Jacksonville, Florida

E. C. ROWELL
Wildwood, Florida

HENRY W. LAND
Tangerine, Florida

ROBERT T. MANN
Tampa, Florida

RAY MATTOX
Winter Haven, Florida

JOHN J. SAVAGE
St. Petersburg, Florida

JAMES L. WALKER
Naples, Florida

JAMES R. EDDY
Pompano Beach, Florida

LOUIS WOLFSON
Miami, Florida

BERNIE C. POPY, JR.
Key West, Florida

FLORIDA LEGISLATIVE REFERENCE BUREAU
DAVID V. KERNS, *Director*

THREE BRANCHES OF GOVERNMENT

Under its Constitution, the powers of the state government of Florida (like those of the United States and of the other American States) are divided among three branches. This division, known as the doctrine of separation of powers, is based on principles intended to protect the rights of every person.

The Legislative branch is the law-making branch, setting the main policies of the government through the laws it enacts. *The Executive branch*, headed by the Governor, sees that the laws are enforced and administers the day to day activities of the government. *The Judicial branch*, composed of the courts, interprets the laws—makes their meaning clear when it is questioned and, on the basis of their meaning, decides disputes between individuals or between the state and an individual.

Although the Constitution provides for these three separate and distinct branches of government, it provides for checks and balances to prevent any one branch from becoming all-powerful; for instance, the Governor is given power to veto acts of the Legislature and the Courts are given power to declare acts unconstitutional. Similarly, by amending a statute, the Legislature may revise a policy of one of the other branches. The three branches are, therefore, not wholly unconnected but are inter-locked in order to give each a constitutional control over the others.

The Legislative Branch

Composition, Organization, and Powers

Florida has a legislature composed of two houses — the Senate and the House of Representatives. Each house is the sole judge of the qualification and election of its own members and has the power to choose its own officers and to make its own rules of procedure. All sessions of the House of Representatives are open to the public; and sessions of the

Senate are open to the public except during executive sessions, when all outsiders are cleared from the chamber and the doors are closed. Either house of the Legislature may initiate legislation on any subject.

In 1962, the Florida constitutional provisions fixing the number of senatorial districts at 38 and the formula which resulted in 95 House members were declared invalid under the Federal Constitution. A special session, in August 1962, proposed a plan for 46 senatorial districts and 135 House members, but this plan was rejected by the voters of the state the following November. A special session, called immediately after the rejection, was unable to propose a new plan. The 1963 and 1965 Legislatures were apportioned under a plan adopted by a third special session held in 1963. It consisted of 43 senatorial districts and 112 House members with a grandfather provision for two Senators whose terms had not expired. Under the grandfather provision, the Senate in 1963 had 45 members and 44 in 1965.

The three judge federal court made it clear that the Legislature would have to accomplish a better apportionment formula for the 1967 session. Following the regular 1965 session, two special sessions dealing with apportionment were held and developed a plan providing for 48 senatorial districts and a House membership of 117. This plan was given approval by the three judge federal court and regular primaries and the general election in 1966 resulted in what was called the first fairly apportioned Legislature in many years. This Legislature convened one week after the 1966 general election pursuant to the constitutional amendment authorizing an organizational session. Presiding officers were elected, committees were appointed and the Legislature got off to an earlier start than had been possible before.

Following the inauguration of the new Governor, the Legislature was called into special session to deal with the question of constitutional revision. On the opening day of this special session on January 9, 1967, the Supreme Court of the United States reversed the three judge federal court holding that the variations in senatorial and representative districts were not properly justified and returning the case to the district court for further proceedings. Pursuant to the supreme court opinion, the constitutional revision session was then broadened by call of the Governor to include the question of reapportionment. A new plan was devised in the session calling for 48 Senators and 119 House members. The three judge court, however, rejected this plan

as well as any formula based on weighted voting and any justification of the 1966 plan. The court then imposed its own plan calling for 48 Senators, each elected from a senatorial district, and 119 members of the House of Representatives. Primaries and elections were held and the present Legislature was elected March 28, 1967. The new members of the Legislature actually were sworn in and began work within one week after their election.

Personnel

The President of the Senate presides over the Senate, and the Speaker of the House presides over the House of Representatives. The President Pro Tempore and the Speaker Pro Tempore preside when requested to do so by the President or Speaker, or when either is unable to serve. These presiding officers are elected by their respective bodies and serve for two years. In addition to the presiding officers, each house elects other officers from outside its membership. The most important of these are the Secretary of the Senate and the Clerk of the House. They are responsible for keeping clear and accurate records of the proceedings of the body each serves. A Sergeant-at-Arms is elected by each house to assist the presiding officer in maintaining order and in making available necessary equipment, supplies, and services. Each house also selects pages, reading clerks, and a chaplain. In addition to these, attaches are appointed to perform the necessary clerical work.

Compensation

Members of the Legislature receive \$1,200 per year in monthly installments of \$100 each. While the Legislature is in a regular, special or extraordinary session, members also receive a daily allowance of \$25 and travel expenses of 10¢ per mile for one round trip each week to and from home to Tallahassee.

Election and Terms of Office

The Constitution provides that members of the Legislature be elected at the general election in November of even-numbered years preceding the April meeting of the regular session of the Legislature. Candidates

are nominated in party primary elections held prior to the general elections. Members of the Legislature must be qualified electors (21 years of age and a citizen of the United States who has lived in Florida at least one year and has lived in his county at least six months) in the counties or districts from which they are chosen. No person may serve as a member of the Legislature while holding a profitable office or appointment under the United States Government or this state.

The Florida Constitution provides that each Senator serves a term of four years and each House member is elected to serve a term of two years. The terms created by the district court for all members of the Legislature expire with the general election of 1968. Further legislative action or court action will be required to determine the terms and make-up of the Legislature subsequent to the general election of 1968.

Legislative Sessions

Regular sessions of the Legislature begin on the first Tuesday after the first Monday in April of odd-numbered years and are limited to sixty days. A regular session may, by a three-fifths vote of the membership of both houses, be extended for no more than a total of thirty days. The extra days do not have to run without a break, and recesses may be taken by the joint action of both houses. However, a regular session may not be extended beyond the first day of September of the same year. During an extended session, no new legislation may be introduced except by a two-thirds vote of the members of the House seeking its introduction.

The Governor may call extra sessions of not more than twenty days each. When the Governor calls a meeting of the Legislature for a special session, the Legislature may consider no other business than that for which it is called or such other matters as the Governor may call to its attention, except by a two-thirds vote of each house.

The Legislature may call itself into an extra session for all purposes as if convened in regular session but limited to thirty days in the following manner: twenty percent of its members must file written certificates with the Secretary of State stating that conditions warrant an extra session; when the Secretary of State receives the required number of certificates, it is his duty to poll the members of the Legislature; when he receives an affirmative vote of three-fifths of the members of both houses, he notifies each member by registered mail of the day and hour on which the extra session will convene; the extra session must con-

vene sometime between fourteen and twenty-one days after the Secretary of State has mailed the notices.

If during the regular session at which the Legislature is required to reapportion itself, it fails to do so, the Governor shall, within thirty days after the session adjourns, call a special session for the purpose of reapportionment. During such a session, reapportionment is the only business that can be considered, and the session cannot be adjourned until reapportionment is accomplished.

Rules

Each session, each house of the Legislature adopts rules of procedure which are printed in booklet form along with committee assignments made by the presiding officers.

Committees

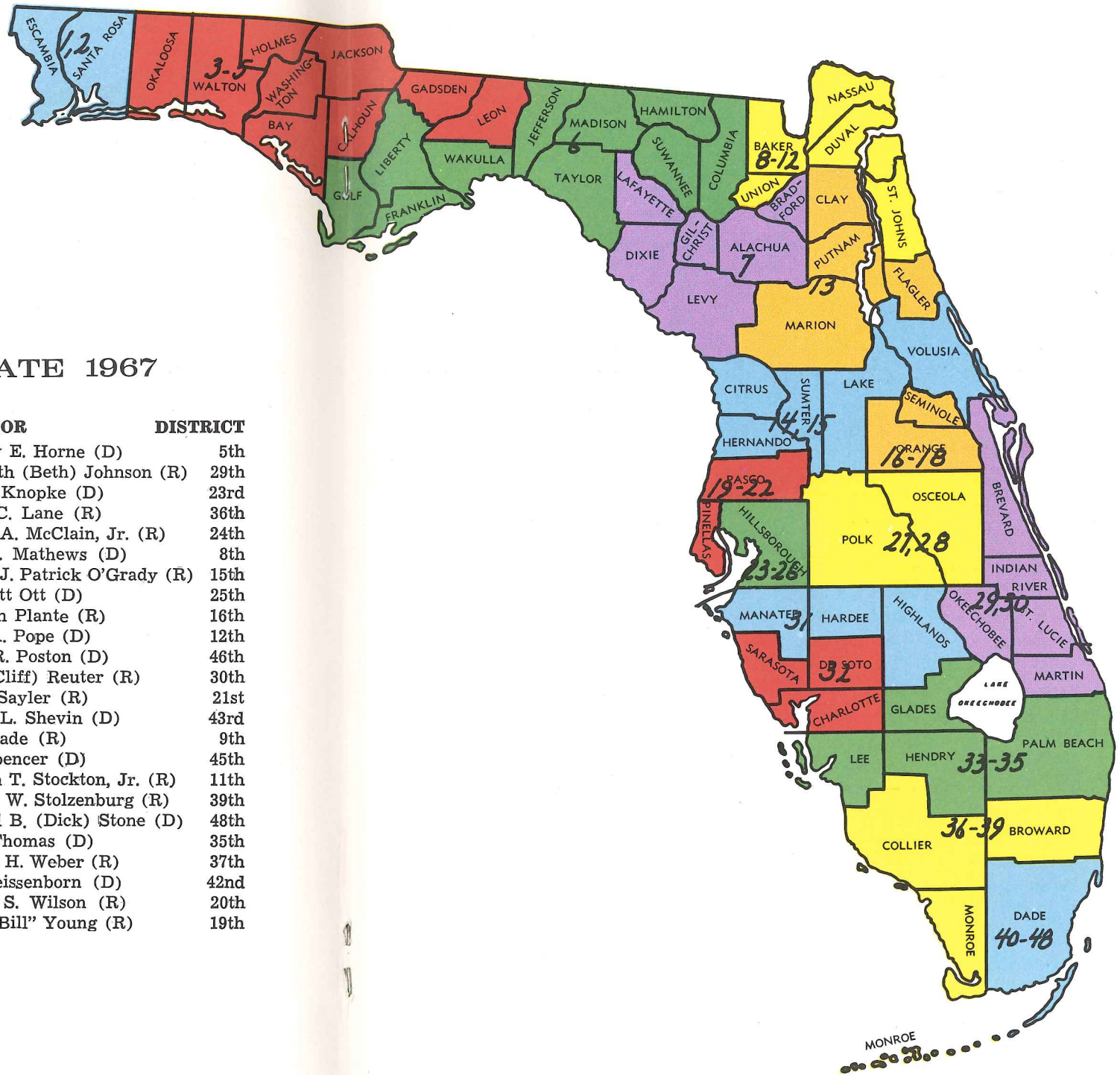
Standing committees which serve during a session are listed according to subject matter in the rules of each house. Members are appointed by the presiding officers of their respective houses on the basis of special knowledge and interest in the subject matter of a particular committee.

Most committees exist for the purpose of considering bills referred to them and recommending action to the house of which they are a part. A committee's work usually begins after a bill has been introduced and referred to it by the presiding officer. Persons desiring to speak for or against matters being considered by a committee may do so in hearings which are open to the public. When a committee completes its work, the bill is returned to the house from which it was referred. House committees may recommend the passage or rejection of a bill, passage of a bill with amendments, or passage of a substitute bill. Senate committees may make any of these recommendations. A bill with an unfavorable report cannot be considered further by either house unless two-thirds of the members present vote to consider it.

Committees also exist for the purpose of managing expenditures and employing necessary personnel, and some committees are designed merely to supervise the progress of legislation to make sure the rules are followed. The rules committees are designed to aid the presiding officers in the interpretation and enforcement of rules; and

THE FLORIDA SENATE 1967

SENATOR	DISTRICT	SENATOR	DISTRICT
Reubin O'D. Askew (D)	2nd	Mallory E. Horne (D)	5th
L. A. "Skip" Bafalis (R)	33rd	Elizabeth (Beth) Johnson (R)	29th
Dempsey J. Barron (D)	4th	Ray C. Knopke (D)	23rd
William Dean Barrow (D)	3rd	David C. Lane (R)	36th
John W. (Jack) Bell (R)	38th	Joseph A. McClain, Jr. (R)	24th
Wilbur Boyd (D)	31st	John E. Mathews (D)	8th
John R. Broxson (D)	1st	Dennis J. Patrick O'Grady (R)	15th
Lawton M. Chiles, Jr. (D)	28th	T. Truett Ott (D)	25th
Ralph R. Clayton (R)	14th	Kenneth Plante (R)	16th
J. Emory "Red" Cross (D)	7th	Verle A. Pope (D)	12th
Richard J. (Dick) Deeb (R)	22nd	Ralph R. Poston (D)	46th
Louis de la Parte, Jr. (D)	26th	C. S. (Cliff) Reuter (R)	30th
L. K. Edwards, Jr. (D)	13th	Henry Sayler (R)	21st
Robert H. Elrod (R)	17th	Robert L. Shevin (D)	43rd
Dick Fincher (D)	47th	Tom Slade (R)	9th
John J. Fisher (R)	10th	Tom Spencer (D)	45th
Elmer O. Friday, Jr. (D)	34th	William T. Stockton, Jr. (R)	11th
L. P. (Pete) Gibson (D)	6th	Chester W. Stolzenburg (R)	39th
Edmond J. Gong (D)	40th	Richard B. (Dick) Stone (D)	48th
Ben Hill Griffin (D)	27th	Jerry Thomas (D)	35th
Bill Gunter (D)	18th	Charles H. Weber (R)	37th
Robert M. Haverfield (D)	41st	Lee Weissenborn (D)	42nd
Warren S. Henderson (R)	32nd	Harold S. Wilson (R)	20th
George L. Hollahan, Jr. (D)	44th	C. W. "Bill" Young (R)	19th



also, late in the session, they determine the order in which legislation shall be considered. There are also special committees which receive assignments not normally handled by standing committees. An important type of special committee is the conference committee. When the two houses cannot agree on a matter, the presiding officer of each appoints an equal number of members to serve as a joint committee for the purpose of trying to adjust the differences. This joint committee is called a conference committee. These special committees are terminated when they complete their assignments.

Interim committees are those which make legislative studies during the period between legislative sessions. Such committees are created by an act or resolution of the Legislature and may be assigned to do research and planning on any major State problem. Usually an interim committee is composed only of members of the Legislature; when such a study group is composed of both legislators and non-legislators, it is usually called a commission.

Legislative Council

The Legislative Council is a permanent committee of the Legislature; it is composed of twenty-six members,—the President of the Senate, the Speaker of the House, and a senator and a representative from each of twelve districts of Florida. Through subcommittees composed partly of Council members and partly of other legislators, studies are conducted on selected topics between sessions; these currently include agriculture, appropriations and auditing, constitutional revision, education, finance and taxation, natural resources and conservation, general legislation, government organization, health and welfare, higher education, insurance, mental health and retardation, personnel and retirement, roads and highways, state institutions and traffic safety.

The Legislative Council employs and supervises a permanent research staff known as the Legislative Reference Bureau; these employees are selected for their research ability and their knowledge in the fields of law, political science, public administration, economics, and governmental accounting. During a session the Bureau assists the entire Legislature and its committees; between sessions, it performs the research for the Council's study committees; and assists interim legislative committees or commissions created by the Legislature. It is also available to answer the request of any legislator for factual information on legislative problems. The Bureau maintains a reference

library on legislative subjects as a reservoir of information for all these functions.

The results of the Bureau's research and of the Council's studies and recommendations are made available to each member of the Legislature so that members can act on the subjects with more information than they otherwise might have.

Journals and Calendars

Each house publishes a daily journal and a daily calendar. These are placed on members' desks before the session begins each legislative day. The Secretary of the Senate prepares the information which appears in the journal and calendar of the Senate, and the Clerk prepares the information appearing in the journal and calendar of the House.

Senate and House Journals are similar in form, each giving an account of all actions taken during a legislative day.

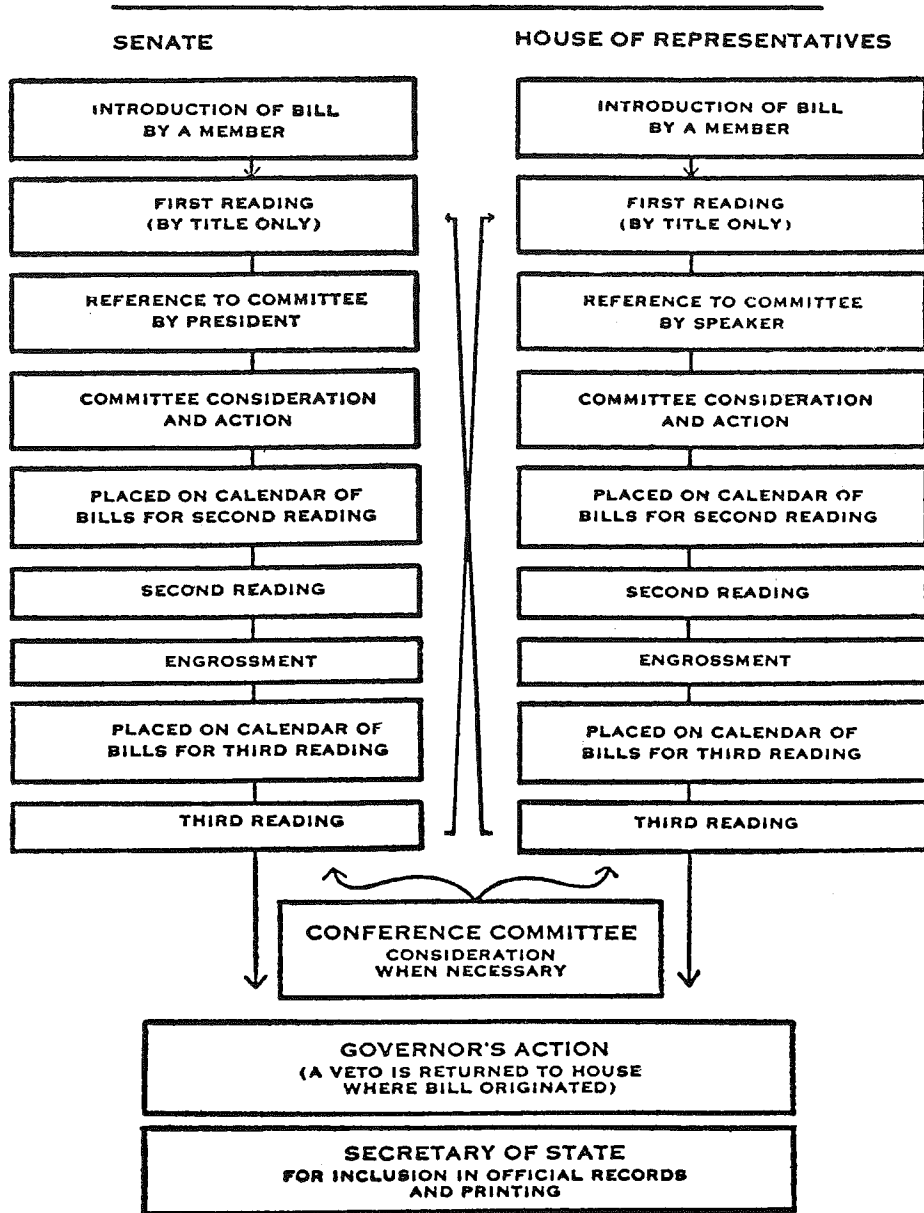
The calendars of the Senate and House show what business is scheduled for consideration each day. Bills are placed on the calendar in the order that the reports are received from committees. In the House, a bill receiving a favorable committee report may be placed ahead of its regular order on the calendar by a two-thirds vote of the members of the Committee on Rules and Calendar. In the Senate, a bill may be placed ahead of its regular order by a motion from the floor and unanimous consent vote of all members present.

Forms of Legislative Expression

Legislative proposals may be in the form of bills, joint resolutions, concurrent resolutions, resolutions and memorials.

A bill is a proposed law. A joint resolution is a proposal to amend the State Constitution. A concurrent resolution is a proposal expressing the opinion or will of both houses of the Legislature, whereas a resolution expresses the opinion or will of only one house. A memorial is a petition or prayer, addressed to the President of the United States, the Congress or some official agency of the United States Government, requesting action or expressing the Legislature's viewpoint respecting a matter which is within the jurisdiction of the official or agency addressed; it is adopted by both houses in the same manner as that of a concurrent resolution.

OUTLINE OF MAJOR STEPS IN THE FLORIDA LEGISLATIVE PROCESS



Bills

There are several kinds of bills. A general bill contains proposed legislation which would affect the entire state. A local bill contains proposals which would affect a particular county or town named in the bill. A local bill must either be advertised in the area to be affected, prior to its introduction in the Legislature, or it must contain a provision whereby the voters in the area will be allowed to vote to accept or reject the measure should it be passed by the Legislature. A general bill of local application is designed to affect areas within a particular population bracket or other descriptions stated in the bill. The criteria used are usually chosen so that only one particular area is included in the effect of the bill.

Bill Drafting Service

The Attorney General provides a bill drafting service which is available to members of the Legislature and other public officials on request. Over half of the bills introduced during recent sessions have been prepared in the office of the Attorney General.

How a Bill Becomes a Law

The Introduction. Bills may be introduced by Senators or members of the House of Representatives in their respective houses of the Legislature. One or more members of either house may introduce a bill. When a bill has been prepared in its proper form, it is delivered to the Secretary of the Senate, if the bill is to be introduced in the Senate, or the Clerk of the House, if the bill is to be introduced in the House. It is checked for compliance with the constitution and the rules of the house in which introduction is sought, and it is given a number.

First Reading. If the bill meets the requirements, it is read for the first time by title only. The presiding officer then refers it to the committee he deems appropriate. The original bill is then delivered to the chairman or Secretary of that committee.

A second copy of the bill is given to the bill clerk, and it is kept by him for the use of the members. The third copy is given to the Sergeant-at-Arms, who makes it available for the use of the general public. The fourth copy is made available to the news reporters and the sixth copy goes to the other house for its files.

The fifth copy is for the Legislative Reference Bureau's use in preparing the daily legislative service. The Bureau summarizes all bills introduced each day and places a copy of the summaries on each member's desk before the next day's meeting of the Legislature, and it also keeps a record of the progress being made by each bill; this record is known as the progress docket. During the 1965 session, 4,465 bills were introduced. With such a large number of bills, members of the Legislature may find it difficult to be familiar with the subject matter of all of them, but by referring to the daily service, a member may secure quickly the contents of any bill being considered.

The committee of the Legislature to whom the bill was referred meets and considers the bill along with any others which may have been referred to it. When a decision is reached as to what further action should be taken on the bill, the committee prepares a report containing its recommendation. A Senate committee report is filed with the Secretary of the Senate and a House committee report is filed with the Clerk of the House.

Second Reading. If the report of the committee is favorable, the bill is placed on the calendar of bills on second reading. When the bill is reached on the calendar, it is the responsibility of the member who introduced it to make the proper motions for its disposition. The second reading of the bill generally is by title only, and it is at this time that it may be changed or amended. If the bill successfully passes the second reading stage, it is sent to the Engrossing Clerk to be examined for correctness as to outward form and to have amendments, if any, properly placed in it.

Third Reading. The bill is then returned to the Secretary of the Senate, if it is a Senate Bill, or the Clerk of the House, if it is a House Bill, to be placed on the calendar for its third reading. The constitutional requirement that the third reading of the bill be in full is usually observed summarily, by an abbreviated reading, because of the large number of bills which must be considered within the short period of two months.

Passage of a Bill. After a bill has had its third reading, it is explained and discussed on the floor. The members then vote upon the question of the passage of the bill. When a bill is passed, the action becomes final unless taken up again under the rule which provides for reconsideration. A bill may be reconsidered only once. If the bill passes, it is then sent to the other house of the Legislature,

where it must be processed through each of the above steps, beginning with the first reading on through to final passage on third reading.

A Bill Becomes An Act. If the bill is passed by the other house, it is returned to the house in which it was originally introduced. It is then enrolled, placed in permanent lasting form on special paper, and signed by the President and Secretary of the Senate and by the Speaker and Chief Clerk of the House. The bill is then an Act and is sent to the Governor for his approval or disapproval.

Review by the Governor. Before an act can become a law, it must be presented to the Governor. If the Governor approves the act, he signs it and files it with the Secretary of State, and it becomes a law. If he does not sign or disapprove the act within five days, it becomes a law without his approval. When the Legislature adjourns, an act becomes a law if the Governor takes no action on it within twenty days after the date of final adjournment.

Governor's Veto. If the Governor disapproves, he writes out his objections and returns the act with his objections to the house of the Legislature in which it originated. This disapproval constitutes an exercise of the Governor's veto power. If both houses then pass the measure by a two-thirds vote of the members present, it becomes a law, notwithstanding the veto. After the final adjournment of the Legislature, the Governor has twenty days in which to veto a pending act by filing it with his objections in the office of the Secretary of State. This officer must present the vetoed act to the Legislature at its next session. If both houses then pass the measure by a two-thirds vote of the members present, it becomes a law.

Appropriations Bills

The most important bill passed during each regular session of the Legislature is the spending or appropriations bill. This bill sets forth the amounts of state funds which will be made available to support the various state agencies during the two-year period beginning July 1 after each regular session of the Legislature.

The procedure for preparing appropriations bills for introduction in the Legislature is quite different from that for other bills. Several months before the Legislature meets, the various agencies of State Government submit to the State Budget Director their requests for funds. The Budget Director compiles these requests and submits them to the Budget Commission, which is composed of the highest rank-

ing executive officers of the State — the Governor, Secretary of State, Attorney General, Treasurer, Comptroller, Commissioner of Agriculture, and the Superintendent of Public Instruction. After holding public hearings, the Budget Commission decides what amounts it will recommend that the Legislature make available to the agencies. The requests of the agencies and the recommendations of the Budget Commission are printed and bound in report form and submitted to the Legislature.

Members of the appropriations committees of both the House and Senate meet with the Budget Commission for its hearings. After these hearings, the appropriations committees divide into four independent subcommittees. Each subcommittee is assigned a group of state institutions and agencies. It visits and confers with the officials of these organizations on their respective budgets and reports its findings to the main committee. This procedure enables the committees to secure information regarding agency requests before the session convenes.

When the Legislature meets, the appropriations committees hold hearings of their own to secure additional information when necessary. Each of the committees introduces an appropriations bill in its respective house of the Legislature. The bills take the same course as other general bills, but it is usually more difficult to get both houses to agree on all items in the bills, and a conference committee is usually appointed to resolve the differences. This conference committee is normally composed of the chairman and two other members of the appropriations committee of each house.

Although the Governor's approval or veto of any other act applies to the whole act, he may veto any distinct item or items in an appropriations act without affecting the rest of the bill. The Legislature may override an item veto in the same manner as was described for the veto on any other act.

Impeachments

The Governor, members of the Cabinet, Justices of the Supreme Court and Judges of the District Courts of Appeal and Circuit Courts may be removed from office only by impeachment. The House of Representatives has the sole power to impeach; that is, to bring charges against any of the above-mentioned officers for a misdemeanor in office. The Senate tries all impeachments, and the Chief Justice of the Supreme Court presides at all trials except in the trial

of the Chief Justice, when the Governor is required to preside. A two-thirds vote of the House of Representatives is required to impeach, and a two-thirds vote of the Senate is required to convict the accused. If convicted, the officer is removed from office and disqualified to hold any office of honor, trust or profit in the State Government. However, an officer may also be indicted, tried and punished, according to law, for the offense for which he was impeached.

Enforcement of Authority

Either house of the Legislature has the power to compel witnesses to appear at any investigation held by it or by any of its committees.

During a session of the Legislature, either house may punish by fine or imprisonment any nonmember who has been guilty of disorderly or contemptuous conduct in its presence or who has refused to obey its lawful summons. Imprisonment, however, cannot extend beyond the final adjournment of the session. Each house may punish its own members for disorderly conduct and may, by a two-thirds vote, expel a member.

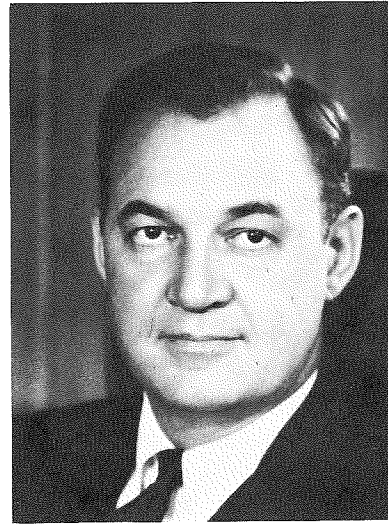
The Executive Branch

The Florida Constitution vests the supreme executive power of the State in the Governor and provides that he shall take care that the laws are faithfully executed. It also provides that the Governor shall be assisted by the following administrative officers: Secretary of State, Attorney General, Comptroller, Treasurer, Superintendent of Public Instruction, and Commissioner of Agriculture. These officers are generally referred to as the *cabinet*.

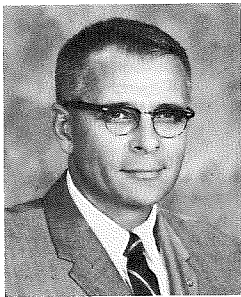
The Governor and members of the cabinet are elected in presidential election years for terms of four years. They take office on the first Tuesday after the first Monday in January following their election in November. The Governor may not succeed himself in office but is not limited in the number of terms he may serve so long as they are not consecutive. A Governor who has been elected to serve for an unexpired term may succeed himself for a full term. Cabinet officers may succeed themselves and are not limited in the number of terms they may serve. The salary of the Governor is \$27,500 per year, and cabinet officers receive \$24,000 each.

GOVERNOR of FLORIDA

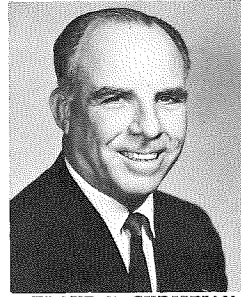
Honorable Claude R. Kirk, Jr., 36th Governor of Florida, was born January 7, 1926, in San Bernardino, California. He entered the Marine Corps in 1943 and was commissioned Second Lieutenant at the age of 19. After his tour of duty ended in 1946 he entered University of Alabama from which he received his Law degree in 1949. On November 8, 1966 he became Florida's first Republican governor in 94 years. His rise to highest office in state government followed a successful career in the fields of insurance and investment banking.



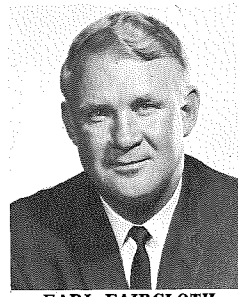
THE FLORIDA CABINET



TOM ADAMS
Secretary of State



FLOYD T. CHRISTIAN
State Superintendent
of Public Instruction



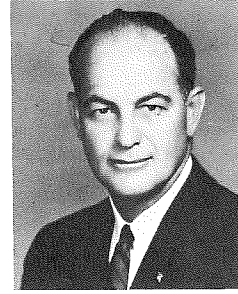
EARL FAIRCLOTH
Attorney General



BROWARD WILLIAMS
Treasurer



DOYLE CONNER
Commissioner of Agriculture



BUD DICKINSON
Comptroller

To be eligible for election to the office of Governor, one must be a qualified voter, must have been a citizen of the United States for ten years, and a citizen and resident of Florida for five years.

Many boards and commissions are composed of the Governor and several or all members of the cabinet. The cabinet usually meets on Tuesdays of each week to transact the business of the various boards or commissions. These boards include: The Armory Board, Board of Commissioners of State Institutions, Board of Conservation, Board of Pardons, Budget Commission, Civil Defense Council, Department of Public Safety, Merit System Personnel Board, Purchasing Commission, State Board of Education, State Board of Administration, Sheriff's Bureau, Textbook Purchasing Board, Trustees of the Internal Improvement Fund, and the boards of trustees of the state and county officers and employees, and of the teachers' retirement systems.

Powers of Governor

The Governor is given the power to appoint all state and county officers when no provision is made for choosing them by popular election. In some cases the Senate is required to approve appointments made by the Governor. For causes set forth in the Constitution he may also suspend officers not liable to impeachment. Suspended officers may be removed, however, only with the consent of the Senate.

The Governor has several duties in connection with the Legislature, some of which have been included in the discussion of the Legislative Branch. He calls the Legislature into session on special occasions, stating the purpose for which it is called. He addresses the Legislature at each regular session, furnishing information on the condition of the State and recommending action he feels the Legislature should take. He may adjourn the Legislature when there is disagreement between the Senate and House as to the time of adjournment. He has the power to veto acts of the Legislature.

Powers of Cabinet Members

In addition to his cabinet duties, each member of the cabinet has primary duties as head of a division of State Government, briefly described as follows:

Secretary of State

He keeps records of the official acts of the Legislative and Executive Departments. He is custodian of the Great Seal of the State and he

has charge of the Capitol building and grounds. He issues charters and certificates of incorporation to corporations, and certificates of election to successful candidates for public office.

Attorney General

He is the legal advisor to the Governor and other officers in the Executive Department, represents the State in legal proceedings, and is responsible for the continuous revision of the *Florida Statutes*. He is the constitutional reporter of the Supreme Court.

Comptroller

He examines requests for the payment of salaries and other obligations of the State and issues warrants to pay them. He is the state bank examiner and also collects a major portion of the taxes levied by the State.

Treasurer

He keeps the funds and other securities belonging to the State, keeps the general accounts, and as Insurance Commissioner and State Fire Marshal, he enforces laws relating to insurance and fire prevention.

Superintendent of Public Instruction

He is the chief administrative officer over the public school system. He is also executive secretary of the State Board of Education. This board is the rule-making body for the public schools, and it has supervision over the Board of Control, which governs the State's institutions of higher learning.

Commissioner of Agriculture

He has duties related to the protection of the agricultural industry of the State and inspects foods and drugs, weights and measures, and gasoline to see that the required standards are maintained. He keeps all records pertaining to public lands and has supervision of the State Prison.

"Little Cabinet"

The full-time administrative heads of several large state agencies, who are responsible to the Governor, are often referred to as his

"little cabinet." Through these administrators, the Governor carries out many of his campaign goals, political objectives and policies of government. These agencies are: the *State Road Department*, which constructs and maintains the major highways and bridges of the State; the *Development Commission*, which "guides", stimulates and promotes the coordinated, efficient and beneficial development of the State; the *Industrial Commission*, which administers unemployment compensation, workmen's compensation, laws relating to child labor and other matters affecting labor and industry; the *Hotel and Restaurant Commission*, which is responsible for the inspection and regulation of hotels, motor courts, apartment houses, rooming houses and restaurants in the State; the *Beverage Department*, which collects cigarette and alcoholic beverage taxes, and enforces the laws relating to the sale of alcoholic beverages; the *Welfare Department*, which administers assistance to the aged, the blind, the disabled and to dependent children; and the *Racing Commission*, which regulates horse and dog racing in Florida.

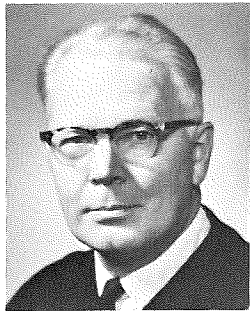
The Judicial Branch

The Judicial Branch of Florida's Government is made up of the courts of the State. There are several kinds of courts in the counties of Florida; however the State pays the salaries of the Supreme Court Justices, of Judges of the District Courts of Appeal, and of Circuit Judges, while other judges are paid by the counties in which their courts are located. The kind of case which a court in a particular county may try depends upon the kinds of courts existing in that county and the types of cases over which each has been given jurisdiction by law.

The Supreme Court is the highest court in Florida. This court does not try cases but reviews important cases which have been tried in the lower courts and appealed to it. Similarly, less important cases are appealed to the District Courts of Appeal (at Tallahassee, Lakeland, Miami and Vero Beach).

Among other duties, the courts pass on the constitutionality of laws enacted by the Legislature, when questions arise requiring such rulings. When, in the opinion of the court, a law in question has not met all the requirements set forth in the Constitution or is not in keeping with its provisions, the law is declared unconstitutional. The Supreme

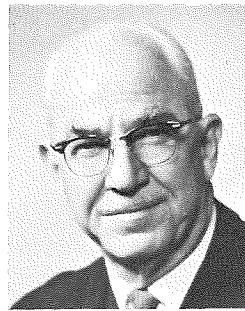
THE SUPREME COURT



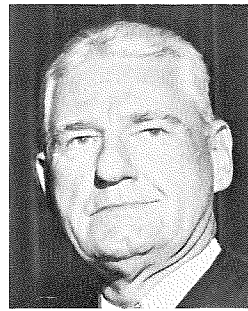
CAMPBELL THORNAL
Chief Justice



ELWYN THOMAS
Justice



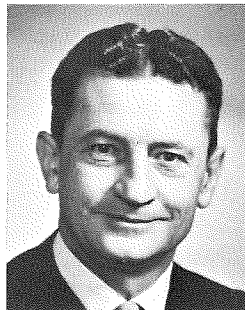
E. HARRIS DREW
Justice



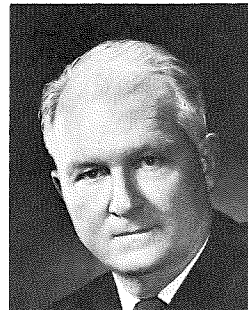
MILLARD CALDWELL
Justice



B. K. ROBERTS
Justice



STEPHEN C. O'CONNELL
Justice



RICHARD W. ERVIN
Justice

Court of Florida is the final authority on such questions unless issues of federal law are also raised.

The Supreme Court consists of seven justices elected for terms of six years. Every two years the justices elect from among their number the Chief Justice, who is the presiding officer of the Court. The terms of justices are staggered so that at least two must be elected every two years. A justice must be at least twenty-five years of age and an attorney at law. Justices receive an annual salary of \$24,000.

There are three or more judges for each of the four District Courts of Appeal, some of which are elected each two years. Their terms are six years, and they may succeed themselves.

There are sixteen judicial circuits in Florida, consisting of from one to eight counties each, and a circuit judge for each 50,000 population or major part thereof. The Circuit Courts try the most important cases.

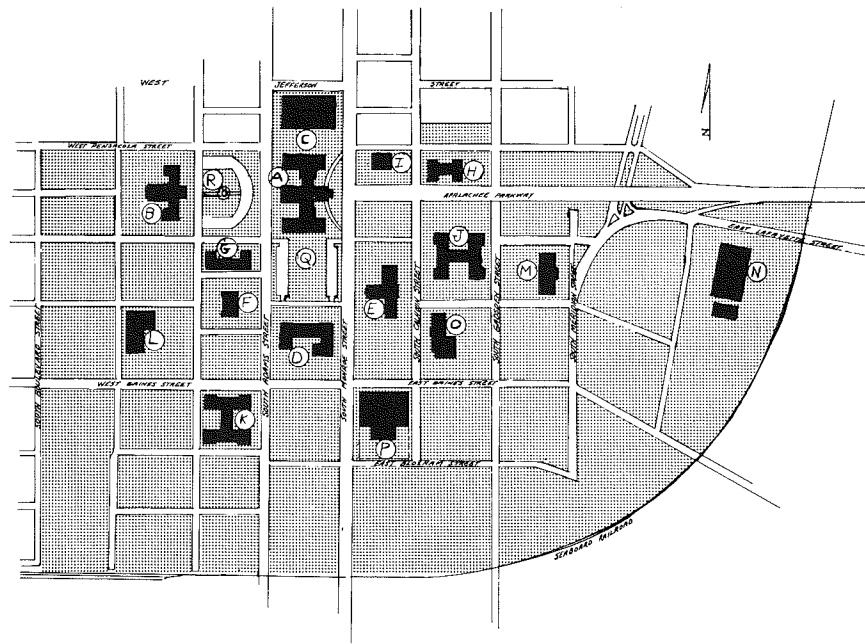
There is in each county a county judge who supervises the estates of deceased persons, minors and incompetents and presides over trial courts of limited jurisdiction in his county. In addition, there are special courts that exist in some counties, such as juvenile courts, courts of record for criminal or civil matters, or both, small claims courts, and others.

The procedure in all courts and the temporary assignment of judges are governed by rules adopted by the Supreme Court.

THE EXECUTIVE RESIDENCE

The Governor's Mansion is the official residence of each governor while he is serving his term of office. In 1953, the Florida Legislature appropriated \$250,000 to remove the old mansion, which dated from 1907, and to construct a new mansion on the same location ten blocks north of the Capitol. The new mansion, now occupied by Governor Claude Kirk and his family, bears a superficial resemblance to Andrew Jackson's Hermitage near Nashville, Tennessee. Its stately white columns offset from a background of red brick portray a theme of Greek revival.

CAPITOL CENTER
from Allen Morris' The Florida Handbook



Shading represents area of Capitol Center. Not all property within this area has been acquired by State.

KEY TO MAP

- A—The Capitol
- B—Supreme Court Building
- C—Legislative Building (proposed)
- D—Millard F. Caldwell Building (Industrial Commission)
- E—Spessard L. Holland Building
- F—J. B. Whitfield Building (Public Service Commission)
- G—W. V. Knott Building (Department of Education)
- H—Nathan Mayo Building (Department of Agriculture)
- I—Fred C. Elliot Building (Trustees, Internal Improvement Fund)
- J—Doyle E. Carlton Building (Comptroller, Treasurer)
- K—LeRoy Collins Building (Development Commission, Motor Vehicle Department)
- L—Charley E. Johns Building
- M—Farris Bryant Building (Game and Fresh Water Fish Commission)
- N—Haydon Burns Building (Road Department)
- O—William D. Bloxham Building
- P—J. Edwin Larson Building (under construction)
- Q—R. A. Gray Park
- R—Curtis L. Waller Park

Note: Agencies named either are exclusive or principal occupants of buildings

Governors of Florida

TERRITORIAL

Andrew Jackson	July, 1821 to 1822
William Duval	1822 to 1834
John H. Eaton	1834 to 1836
Richard K. Call	1836 to 1839
Robert Raymond Reed	1839 to 1841
Richard K. Call	1841 to 1844
John Branch	1844 to 1845

STATE

William D. Moseley	1845 to 1849
Thomas Brown	1849 to 1853
James E. Broome	1853 to 1857
Madison S. Perry	1857 to 1861
John Milton	1861 to 1865
William Marvin	1865 to 1866
David S. Walker	1866 to 1868
Harrison Reed	1868 to 1873
Samuel T. Day	1872
(Acting during impeachment proceedings against Governor Reed)	
Ossian B. Hart	1873 to 1874
(Died in office)	
Marcellus L. Stearns	1873
(Acting, June to November)	
Marcellus L. Stearns	1874 to 1877
George F. Drew	1877 to 1881
William D. Bloxham	1881 to 1885
Edward A. Perry	1885 to 1889
Francis P. Fleming	1889 to 1893

Henry L. Mitchell	1893 to 1897
William D. Bloxham	1897 to 1901
W. S. Jennings	1901 to 1905
N. B. Broward	1905 to 1909
Albert W. Gilchrist	1909 to 1913
Park Trammell	1913 to 1917
Sidney J. Catts	1917 to 1921
Cary A. Hardee	1921 to 1925
John W. Martin	1925 to 1929
Doyle E. Carlton	1929 to 1933
David Scholtz	1933 to 1937
Fred P. Cone	1937 to 1941
Spessard L. Holland	1941 to 1945
Millard F. Caldwell	1945 to 1948
Fuller Warren	1949 to 1952
Dan McCarty	1953 Died
Charley E. Johns, Acting	1953 to 1955
LeRoy Collins	1955 to 1961
Farris Bryant	1961 to 1965
Haydon Burns	1965 to 1967
Claude R. Kirk, Jr.	1967 -

Origin and Names of Florida Counties

Alachua—(From an Indian term, meaning “grassy or marshy”—1824).
 Baker—(For James M. Baker, former Judge of the Fourth Judiciary District—1861).
 Bay—(From St. Andrews Bay—1913).
 Bradford—(For Captain Bradford, killed during the Civil War—1861).
 Brevard—(For Dr. Brevard, said to have been the author of the Mecklenburg, N. C. Declaration of Independence—1844).
 Broward—(For Governor N. B. Broward—1915).
 Calhoun—(For John C. Calhoun—1838).
 Charlotte—(For the harbor—1921).
 Citrus—(For citrus, the orange variety of trees—1887).
 Clay—(For Henry Clay—1858).
 Collier—(For Barron Collier, a large land owner and developer—1923).

Columbia—(For the discoverer of America—1832).
 Dade—(For Major Francis L. Dade, whose command was killed in the Seminole War—1836).
 Desoto—(For Hernando DeSoto—1887).
 Dixie—(For a popular term commonly applied to the South—1921).
 Duval—(For Governor William P. Duval—1822).
 Escambia—(From Escambia River, a Spanish term, meaning barter or exchange—1821).
 Flagler—(For Henry M. Flagler, builder of the East Coast Railway—1917).
 Franklin—(For Benjamin Franklin—1832).
 Gadsden—(For James Gadsden—1823).
 Gilchrist—(For Governor Albert H. Gilchrist—1925).
 Glades—(For the last syllable of the word Everglades—1921).
 Gulf—(For the Gulf of Mexico—1925).
 Hamilton—(For Alexander Hamilton—1827).
 Hernando—(For the first name of Hernando DeSoto—1843).
 Hardee—(For Governor Cary A. Hardee—1921).
 Hendry—(For an old and popular resident—1923).
 Highlands—(For the abundant highlands in the county—1921).
 Hillsborough—(For the English Earl of Hillsborough—1834).
 Holmes—(For an early resident—1848).
 Indian River—(For the river of that name—1925).
 Jackson—(For Andrew Jackson—1822).
 Jefferson—(For Thomas Jefferson—1827).
 Lafayette—(For Marquis de Lafayette—1856).
 Lake—(For number of Lakes—1887).
 Lee—(For General Robert E. Lee—1887).
 Leon—(For Ponce de Leon—1824).
 Levy—(For U. S. Senator David Levy—1845).
 Liberty—(From the common sentiment which actuates the American people—1855).
 Madison—(For James Madison—1827).
 Manatee—(From the existence of the sea cow, or Manatee, in its waters—1855).
 Marion—(For General Francis Marion—1844).
 Martin—(For Governor John W. Martin—1925).
 Monroe—(For James Monroe—1824).
 Nassau—(From Duchy of Nassau, in Germany—1824).
 Okaloosa—(From an Indian word meaning pleasant place—1915).
 Okeechobee—(From the Lake—1917).
 Orange—(From number of orange groves in county—1824).
 Osceola—(For a noted Seminole Indian chief—1887).

Palm Beach—(From local conditions—palms and seabeaches—1909).
 Pasco—(For U. S. Senator Samuel Pasco—1887).
 Pinellas—(The Pinellas peninsula was known to the early Spanish explorers as "Pinta Pinal," said to mean "Point of Pines." Out of Pinta Pinal comes the present name. It has the distinction of being the only word of the kind known to human speech—1911).
 Polk—(For James K. Polk—1861).
 Putnam—(For General Israel Putnam—1849).
 Sarasota—(From the Indian word applied to a prominent feature of the shore line known as Point of Rocks extending into the Gulf near Crescent Beach—1921).
 Santa Rosa—(For a saint of the Catholic Church—1842).
 Seminole—(From the name of an Indian tribe—1913).
 St. Johns—(From St. Johns River, called by Spanish explorers "San Juan Baptista"—St. John the Baptist—1821).
 St. Lucie—(For a saint of the Catholic Church—1844).
 Sumter—(For General Thomas Sumter, Revolutionary hero, for whom Fort Sumter was named—1853).
 Suwannee—(From the river now renowned in song; an Indian word said to be "Sawni," meaning "Echo"—1858).
 Taylor—(For General Zachary Taylor—1856).
 Union—(From the common term expressing unity—1921).
 Volusia—(For a former town named for a settler known as Volus—1854).
 Wakulla—(For a large spring; the word being Indian for "Mystery"—1843).
 Walton—(For Colonel Walton, a prominent Georgian—1824).
 Washington—(For George Washington—1829).

Historical

Data Concerning Florida

PERIOD OF EXPLORATION

- 1497 Sebastian and John Cabot, under Henry VII, of England, sail and probably map the entire Atlantic coast from Labrador to Mexico. First voyage of Americus Vesputius along the same route.
- 1500 Voyage of Gasper Cortreal (Portuguese) along the Florida coasts.
- 1502 Ponce de Leon sails with Ovando for Hispaniola (Hayti). Date of the Alberto Cantino Map. First map of Florida.
- 1504 Ponce de Leon appointed Adelantado of Hiquey, the eastern Province of Hayti.
- 1509 Ponce de Leon appointed Governor of Porto Rico by Ferdinand, king of Spain.
- 1513 Ponce de Leon embarks for Bimini March 3rd, in search of The Fountain of Youth, discovers land March 27th, on Easter Sunday (Pascua Florida), christens it Florida, the Land of Flowers; landing a little north of St. Augustine April 2nd. Shortly returns to Porto Rico, after discovery and charting of islands and parts of the coast.
- 1518 Grijalva's first slave raid to Florida and the Bahamas.
- 1519 Alvarez Pineda cruises up the Florida Gulf Coast and discovers the Mississippi River, naming it Rio de Santo Espiritu.
- 1521 Ponce de Leon's second voyage to Florida. Wounded by an Indian arrow, is carried to Cuba; dies there and buried in his castle in Porto Rico.
- 1524 D'Allyon's voyage to Florida coasts.
 Probable date of voyage of Diego Miruello from San Domingo to Florida, exploration of the Gulf of Mexico.
- 1525 D'Allyon's vessels wrecked on their return on Florida coasts.
- 1528 Narvaez's expedition embarks for Florida, landing near Tampa.
- 1530 Alvar Nunez Cabeza Vaca, treasurer of Narvaez's expedition,

- 1531 wanders across the American Continent for seven years and was
 1532 the first European to cross it from the Mexican Gulf to the Gulf
 of California.
 1539 DeSoto lands at Tampa and marches to Anhaquea (present
 Tallahassee) where he spends the winter.
 1540 DeSoto travels on north to the headwaters of the Savannah River
 and thence west.
 1541 DeSoto discovers Mississippi.
 1542 His death and burial in Mississippi.
 1543 Remnant of DeSoto's force arrives at Tampico. Loss of 700 men.
 Death of Bobadilla, DeSoto's wife, of grief.

PERIOD OF COLONIZATION

- 1556 Elaborate expedition planned in Spain to colonize and Christian-
 ize Florida. Don Tristan de Luna chosen to command.
 1559 De Luna's departure from Mexico to Florida and landing near
 what is now Pensacola. Hurricane destroys his fleet.
 1561 Remnants of De Luna's force return to Mexico. Complete failure
 of the whole expedition.
 1562 Ribault's first voyage to colonize Florida. Discovers the River
 May (St. Johns), establishing colony of thirty men near Port
 Royal and returns to France.
 1563 This colony, dissatisfied, builds ship and leaves for France; small
 remnant only arrive home.
 1564 June 22nd, Rene Laudonniere arrives on the Florida Coast at
 the River May (St. Johns), builds Fort Caroline and explores
 the country generally.
 1565 August 29th, marks the arrival for the second time of Jean
 Ribault, followed on September 4th by Pedro Menendez de
 Aviles.
 September 6th, St. Augustine established with great pomp and
 ceremony and temporary fortifications built.
 September 16th, Ribault's fleet destroyed by tropical storm.
 September 18th and 19th, Menendez marches with 500 men to
 Ft. Caroline, capturing it September 20th with great slaughter.
 September 25th, captures first band of shipwrecked Huguenots
 at Matanzas and destroys them, repeating the operation four
 days later. Returns to Ft. Caroline and rebuilds it, leaving later
 for Cuba.
 1566 Menendez returns to Spain and receives royal welcome.
 Small colony, including fourteen women, sent from Spain to St.
 Augustine.
 1567 Dominique de Gourges plans revenge for Huguenot massacre
 and leaves France for that purpose.

- 1568 De Gourges arrives at the St. Marys River and proceeds south
 to the St. Johns and destroys Ft. San Mateo and garrison,
 avenging his countrymen, returns to France.
 1569 Menendez returns from Spain, rebuilds San Mateo, destroys St.
 Elena, then returns to Spain.
 1570 Mutinies in the Spanish forts in Florida.
 1574 Death of Menendez September 17th, aged 55, at the height of
 his fame, at Santander. Elaborate burial in Aviles, Spain.
 1575 Hernando de Miranda appointed Governor of Florida to succeed
 Menendez.
 1577 St. Helena, which had been re-established, again dismantled and
 inhabitants sent to St. Augustine.
 1578 St. Augustine and Florida's importance stressed at the Court of
 Spain and appropriations made for same.
 1584 Marked influx of missionaries to Florida from Spain.
 1586 Drake destroys St. Augustine and loots its treasury.
 1587 St. Augustine rebuilt and much improved, with funds from Spain.
 1588 The destruction of the Spanish Armada on the English coasts.
 Spain's naval power completely crippled. Spanish colonies suffer
 accordingly.
 1595 Hernando de Mestas plans to build the Forts at St. Augustine
 of stone, voyages to Spain for that object and obtains royal
 authority to do so.
 1612 Eleven convents reported flourishing and active in Florida.
 1613 First accounts of experimental tobacco growing in Florida.
 1615 Probable date of building Mission near St. Marys. Walls still
 standing.
 1630 Sir Robert Dudley, Duke of Northumberland, surveys and charts
 the coasts of Florida the second time.
 1637 Expedition planned by Spain to conquer the Indian tribes of
 West Florida successful.
 1638 Building of stone fort and other improvements commenced with
 forced labor of Indian prisoners.
 1639 Large quarries opened on Anastasia Island to supply rock for
 fortification and seawall.
 1642 Sir Robert Dudley surveys and charts the Florida coast from
 Cape Canaveral northward.
 1645 Probable date of building fort at Matanzas.
 1647 Population of St. Augustine reported as two thousand.
 1649 Great activity in mission work and success reported in Christian-
 izing Indians.
 1665 Centenary of the establishment of St. Augustine by Menendez.
 The English freebooter Davis destroys the city.

- 1675 Expedition from Florida to destroy the British settlement at St. Helena.
- 1686 British succeed in conquering all Spanish territory to the north of St. Augustine and driving Spaniards out.
- 1696 D'Ariola founds Pensacola.
Jonathan Dickenson's shipwreck on the Florida coast, which later being published, excited great interest.
- 1697 Perdido River in West Florida accepted as a boundary between France and Spain.
- 1698 War being declared between France and Spain, reacts unfavorably on colonies in West Florida, formerly helpful to each other.
- 1704 Fort San Luis, two miles west of Tallahassee, destroyed; the last inland fortification maintained by Spain.
- 1715 Wreck of Spanish treasure fleet on Carysfoot Reef, Florida.
- 1716 English ships loot much of the recovered treasure amounting to \$700,000, carrying it to Jamaica.
- 1718 Don Antonio Malini appointed Governor of Florida. All Indians driven away from Spanish settlements to their great loss.
First account of any settlement at St. Josephs Bay, first by the French and later by the Spaniards.
- 1719 Flags changed four times this year at Pensacola, from Spain to France and vice versa.
- 1722 Peace in Europe concluded between France and Spain.
Pensacola and West Florida returned to Spain by France.
- 1725 Col. Palmer's attack on Florida from South Carolina.
- 1726 Palmer returns home with immense booty in cattle, etc., looted from the Spaniards in Florida.
- 1739 England declares war on Spain. Oglethorpe instructed to harass Spanish possessions in Florida.
- 1740 Oglethorpe proceeds to Picolata, Florida, and besieges St. Augustine.
- 1741 Indigo culture first mentioned in Florida.
- 1742 Spanish expedition from Havana and Florida attack Oglethorpe in Georgia. Defeated at the battle of Bloody Marsh Island near St. Simons.
- 1743 Oglethorpe's second expedition to Florida.
- 1750 Great suffering from yellow fever epidemic in St. Augustine.
- 1755 Fernando de Herreda appointed Governor of Florida, great building activity.
- 1756 Castle of San Marco in St. Augustine completed in this year after 118 years' work on same.
- 1761 War again breaks out between Spain and England.
- 1762 Havana and Manilla captured by England's navy with immense booty totaling \$28,000,000.

- 1763 Havana restored to Spain in exchange for Florida. Peace.
- 1764 Great English immigration to Florida, mills and plantations started, great industry and activity.
- 1767 Dr. Andrew Turnbull receives grant of land and he and Sir William Duncan bring large colonies of Greeks and Minorcans to Florida.
- 1768 Mutinies and troubles break out on Turnbull's plantations.
- 1769 The botanists, William and John Bartram, father and son, travel through Florida and compile valuable information for the Colonial government, works still extant.
- 1774 Governor Patrick Tonyn succeeds Governor Moultrie as English Governor of East Florida, bitterly opposes Dr. Turnbull.

CHANGING FLAGS

- 1776 Year of Independence. Florida remains loyal to England.
Declaration of Independence with effigies of John Hancock and John Adams publicly burned in the park at St. Augustine.
- 1777 Breaking up of the Turnbull (New Smyrna) colony.
- 1778 Revolutionary rumblings of France have a marked effect on Florida.
- 1779 Invasion of West Florida threatened by Spaniards in Louisiana.
- 1780 Don Galvez and Admiral Solana concentrate their forces to attack Pensacola.
- 1781 Forts of Pensacola under Col. Campbell (British) surrender to Spanish attack.
- 1783 September 3rd, treaty of Peace signed in Paris, ending the Revolutionary War.
Florida exchanged for the Bahama Islands.
- 1788 William Augustus Bowles, military adventurer, attacks Spanish interests in Florida.
- 1789 Bowles assumes control of the Muscogee Indians.
- 1790 Treaty made between the United States and Creek Indians in Florida in which the Indians agree to return runaway slaves.
- 1791 Bowles captured, sent to Spain and later to the Philippines where he was imprisoned for six years.
- 1792 Indians and negroes enlisted by border ruffians to incite troubles with Spanish Florida.
- 1795 Treaty between the United States and Spain as to Florida's western boundary.
- 1796 Boundaries finally agreed on by Commissioners of both countries.
- 1797 Bowles escapes from Spain, proceeds to England, there aided to harass the United States in West Florida.
- 1798 Second Boundary Commission, after delay of two years, reports their work completed as between Spain and U. S. A.

- 1800 Spain, by secret treaty, cedes Louisiana to France.
Part of Florida seems to be included.
Monuments later erected, satisfactory to both parties.
- 1801 Bowles captured the second time, sent to Cuba.
- 1803 The purchase from France of Louisiana for \$15,000,000, giving the United States control of the Mississippi Valley.
Boundaries between this territory and Florida again questioned.
- 1808 Fernandina declared a free port, became a rendezvous for much questionable trade.
- 1809 Napoleon, having conquered Spain in Europe, claims all her colonies, Florida included. This was stoutly resisted by the United States and later in 1823 became elaborated in the Monroe Doctrine.
- 1810 Republic of West Florida organized September 10th, at Pensacola, to control disputed territory. Dissolved after an existence of 58 days by orders from Washington, without trouble.
- 1811 War imminent between United States and England.
Republic of East Florida, so called.
- 1812 June 18th, war declared on England by the United States.
Organization of Republic of Florida.
- 1813 All American influences withdrawn from Florida by order of President Madison, with apologies to Spain and pardon to former disturbers of the peace.
- 1814 Fierce engagement off Cape Canaveral, Florida, between British and American war vessels. British troops occupy Pensacola, speedily driven out by Andrew Jackson.
Articles of Peace signed in Ghent, Belgium, between England and United States, December 24th.
- 1818 Jackson's second invasion of Florida.
- 1819 Treaty drawn up in Washington for Florida's transfer to United States.
- 1820 October 24th, Treaty of Transfer duly approved and signed.
- 1821 Transfer of West Florida accepted by Andrew Jackson.
Flags changed at Pensacola from Spain to United States of America, July 17th.
July 10th, transfer of East Florida at St. Augustine, to Col. Robert Butler.
Ratification exchanged February 22nd.

TERRITORIAL PERIOD

- 1821 July 21st, St. Johns and Escambia created Counties, and municipal government established in St. Augustine and Pensacola.

- 1822 John James Audubon, noted naturalist, visits and writes of Florida.
Civil government established March 3rd.
- 1823 Second Legislative Council held in May, in St. Augustine, and decision made that a central point of meeting be chosen for future Legislation.
First treaty made, September 18th, with Florida Indians at Moultrie Creek, signed by 32 leading chiefs.
- 1824 Dr. Simmons and John Lee Williams select Neomathla's village near Tallahassee for future State Capital.
- 1825 Appropriation of \$23,000 by the Legislative Council to build road from Pensacola to St. Augustine.
Congress voted \$200,000 to Lafayette and 23,000 acres just east of Tallahassee, Florida. Later settled by emigrants from France. Achille Murat, son of the King of Naples, emigrates to Florida, first living in St. Augustine, and later in Tallahassee; married a Virginia lady visiting Tallahassee, where he died in 1847.
- 1826 Congress grants to Florida the elective franchise for their representatives in Congress and State Legislature.
- 1828 Judicial District formed for the whole of South Florida Court to sit at Key West.
First bank organized in Florida, at Tallahassee.
- 1829 Privilege extended to elect all officers for Florida except the Governor, he being appointed by the President.
Commencement of era of wildcat banking and boom towns in Florida.
- 1831 Legislative Council encourages plans for roads and canals to aid internal transportation.
Bank of St. Augustine chartered.
- 1832 Treaty with the Indians at Payne's Landing on the Oklawaha.
Jacksonville's first Charter of Incorporation.
- 1835 Beginning of Indian War. Dade massacre December 25th.
Osceola becomes a prominent leader in Indian affairs.
- 1837 Osceola's capture and imprisonment.
- 1838 Osceola's death at Ft. Moultrie, near Charleston, S. C.
- 1839 Constitutional Convention held at St. Joseph adjourned, having given Florida its first Territorial Constitution.
- 1840 Murder of Dr. Henry Perrine at Indian Key and destruction of Lighthouse at Cape Florida by so-called Spanish Indians.
Company of play actors murdered by Indians near Picolata.
- 1841 Closing scenes of the Indian War. Coacoochee captured and deported.
- 1842 Armed Occupation Act.
- 1844 Preparation to enter Statehood.

- 1845 March 3rd, Florida and Iowa become States by the same Act.
Dr. John Gorrie discovers process for making ice.
- 1847 War with Mexico, Florida largely drawn on for troops.
Lighthouse built at Cape Canaveral.
- 1849 Breaking up of the Indian River colony near Ft. Pierce by the
murder by Indians of Trader Barker at Barker's Bluff.
- 1850 Swamp Land Act passed by Congress.
- 1856 Lands granted to the Florida Railroad Co., and construction
begins on first through State railroad.
- 1858 Close of last war with the Seminoles.

UNDER THE CONFEDERACY

- 1861 January 10th, Florida secedes, and on February 17th, joins the
Confederacy at the Montgomery Convention.
April 12th, first shot fired on Ft. Sumter, Charleston, S. C. Civil
War commenced.
- 1862 During February and March all principal towns in Florida in
occupation by Federal troops and its whole coast blockaded.
- 1863 Large numbers of Florida negroes enlisted in the Northern
Army and various expeditions sent against the fortifications along
the St. Johns River.
- 1864 February 20th, at Olustee, Florida, was fought the one great
battle on Florida soil; more than 9,000 men engaged. Federals
badly defeated.
- 1865 Lee's surrender at Appomattox to Grant, April 9th.
Abraham Lincoln assassinated April 14th.
Final surrender of Confederate troops May 26th by Gen. E.
Kirby Smith in Texas.
President Jefferson Davis captured and imprisoned and his
cabinet scattered, some finally reaching Cuba via the Indian
River and the Keys.
May 20th, Tallahassee, only Confederate State Capital east of
Mississippi not captured during war, yields peaceable posses-
sion to Federal troops.
- 1866 Reconstruction begins under Federal supervision.

RE-ESTABLISHED IN THE UNION

- 1868 Civil government re-established July 4th.
- 1876 Presidential election claimed by Democrats and Republicans on
disputed returns from South Carolina, Florida and Louisiana.
Hayes elected.
- 1877 Federal supervision of Florida affairs ends and reconstruction
times closed under President Hayes.

- 1879 First telephones installed in Jacksonville.
- 1881 Sale of four million acres of State-owned lands to Hamilton
Disston and associates.
- 1882 Establishment of Institute for Deaf Mutes in St. Augustine, and
Academy established in DeLand by H. A. DeLand.
- 1885 Constitutional Convention met in Tallahassee.
- 1887 Adopted by popular vote.
- 1889 Discovery of phosphate.
Special session of the Legislature called by Governor Fleming
and State Board of Health organized with splendid effect on
contagious and infectious diseases.
- 1891 Sub-Tropical Exhibition opened in Jacksonville, doing much to
advertise Florida's products.
- 1892 Flagler railroad reaches Titusville and proceeds down the East
Coast.
- 1893 World's Fair opened at Chicago. Florida represented.
- 1895 Severe frost, in February, destroys practically the entire citrus
production of Florida for some years to come.
- 1896 Railroad reaches Miami June 26th.
- 1897 Activity in railroad building on the West Coast of Florida.
- 1898 Spanish-American War gives Florida great impetus.
- 1899 Fire destroys Miami.
- 1900 Last Democratic Convention held in Florida for nomination of
State officers.
- 1901 May 3rd, 466 acres in Jacksonville laid waste by disastrous fire,
with some loss of life and untold value in records, etc.
- 1904 Rebuilding of the Mayport jetties improves navigation of the
St. Johns River to Jacksonville and large ships enter safely.
- 1905 First cut to the ocean for Miami Harbor.
Florida East Coast Railroad commences extension to Key West.
Overseas railroad.
- 1907 Everglades drainage commences under supervision of Governor
Broward.
- 1912 Florida East Coast Railroad runs first train into Key West.
- 1914 Germany declares war on France, and England on Germany,
1915 causing great uncertainty and depression in Florida business
circles, especially in naval store, timber and phosphate; shipping
at a standstill.
- 1917 United States enters the World War, April 6th. Shipyards and
camps greatly increase Florida's activities.
- 1918 November 11th, Armistice declared which closes hostilities.
- 1922 Orange crop largest ever known to this date, 16,000,000 boxes.
- 1924 Renewed activities and increase in land values. Great road build-
ing program laid out and work commenced, giving Florida un-

excelled communication as never before dreamed possible.

1925-

26 Florida land boom.

1926 Constitutional amendment passed to enable the State to appropriate money for free schools.

1929 Completion of Bok Tower at Lake Wales, containing carillon and connected therewith is a bird sanctuary.

1929-

31 Measures taken for Florida to cancel bonded debts of the counties.

1933 Passage of Florida Probate Law.

1936 Completion of north wing of State Capitol.

1940 Creation of State Board of Welfare.

1947 Appropriation for education which marked the turning point in the advancement of education in Florida and the creation of Florida State University in Tallahassee.

1948 Completion of three large state office buildings in Tallahassee, also additional buildings at the two universities—Gainesville and Tallahassee.

Completion of south wing of Capitol.

STATE SONG — "SWANEE RIVER"*

BY STEPHEN FOSTER

*Way down upon de Swanee Ribber,
Far, far away.
Dere's wha my heart is turning ebber,
Dere's wha de old folks stay.
All up and down de whole creation
Sadly I roam,
Still longing for de old plantation,
And for de old folks at home.*

CHORUS

*All de world am sad and dreary,
Eb-rywhere I roam;
Oh, darkeys, how my heart grows weary,
Far from de old folks at home!*

*All round de little farm I wandered.
When I was young,
Den many happy days I squandered,
Many de songs I sung.
When I was playing wid my brudder
Happy was I;
Oh, take me to my kind old mudder!
Dere let me live and die.*

*One little hut among de bushes,
One dat I love,
Still sadly to my memory rushes,
No matter where I rove.
When will I see de bees a-humming
All round de comb?
When will I hear de banjo tumming,
Down in my good old home?*

* Designated by House Concurrent Resolution No. 22, Legislature 1935

STATE BIRD

The Mocking Bird was designated by Senate Concurrent Resolution No. 3, 1927 Legislature as the State Bird. This bird lives in Florida year-round and is possibly the most widely-distributed and best known bird in the State. Its chief delight is to imitate the songs and call notes of other birds, and scientists have given it a Latin name that means "mimic of many tongues." It is also one of man's best allies against harmful insects.

STATE FLOWER

The Orange Blossom was designated the State Flower by Concurrent Resolution No. 15, 1909 Legislature. Perhaps one of the prettiest and also the most fragrant scenes in Florida is Orange Blossom time when millions of graceful white flowers of the orange tree perfume the atmosphere for miles around, a tribute to one of the major commercial products grown in the State.

(See facing page for illustrations.)



STATE TREE

Designated by 1953 Legislature, the Sabal Palm possesses a majesty that sets it apart from other trees. Tolerant of a wide variety of soil types and growing throughout the State, the Sabal Palm has many uses including food and medicine. It is often used for group, specimen or avenue planting, because of its universal popularity.

