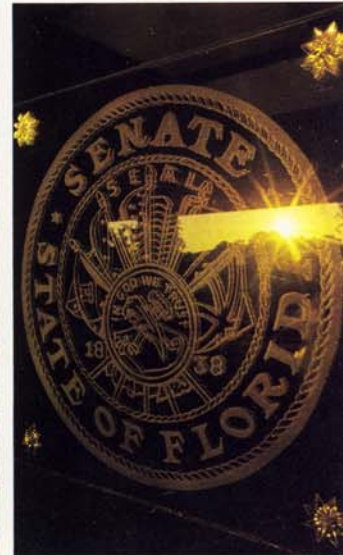


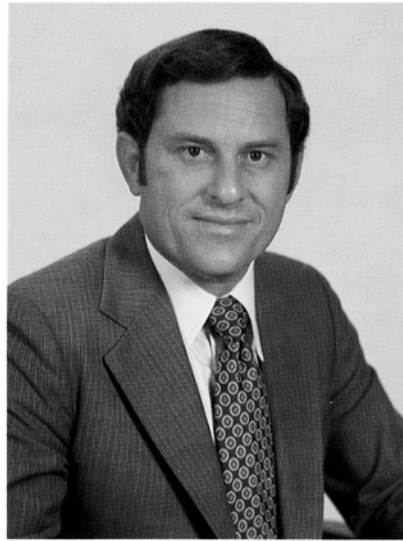


The Florida Senate

1976 - 1978



Welcome to the Senate



LEW BRANTLEY
President of the Senate

Dear Friend,

As President, and on behalf of all forty members of the Florida Senate, it is a pleasure for me to extend greetings.

The Senate is an important part of your government, and in this booklet we have attempted not only to outline the make-up of your Senate by names and districts, but also to provide some basic information on the legislative process and a brief background on the other branches of your state government.

For a government by democracy to thrive, there must be substantial interest, concern, and input from its citizens. Without those ingredients, surely our government as we know it would wither and die.

In lieu of being able to personally greet each person who has evidenced an interest in their government by obtaining this booklet, I take this opportunity to express my gratitude for your involvement in your government.

Sincerely,

A handwritten signature in cursive script that reads "Lew Brantley".

Lew Brantley
President

The Florida Senate

When the first Senate was convened on January 7, 1839 — six years before Florida became a state — no business could be transacted because only seven of the sixteen Senators were present. There was no quorum of Senators for three of the first four days, and it was not until the fifth day of that first session that Territorial Governor Richard Keith Call addressed the Senate and the House of Representatives in joint session.

Since those beginning days, the Senate has evolved into a highly organized, smoothly functioning legislative body that meets annually to conduct the people's business. There is now a year-round staff of committees to conduct vital research and prepare for the legislative sessions. The Legislature is now equal to the executive and the judiciary in function as well as in theory.

"Once a Senator, always a Senator" is a catchy phrase of good fellowship that conveys something of the philosophy of the Senate. The Florida Senate today is composed of forty members elected directly by the citizens of the state. The constitution specifies that Senators must be at least twenty-one years old, must be registered voters, must be residents of the district from which they are elected, and must have resided in Florida for two years prior to their election. Senators are elected to four-year terms, and the terms are arranged so that one half of the members are elected every two years. The Senators from odd-numbered districts were elected in 1976; the terms of the Senators from even-numbered districts will expire in 1978. Each Senator is paid \$12,000 annually.

While members of the other branches of the government devote fulltime to public service, the Legislature maintains its identity as the "citizen" branch. Almost all of the Senators are occupied in a business or profession when they are not carrying out their legislative duties. The occupations of Senators range from attorney to chiropractor to insurance agent to professional numismatist. The average age of the Senators is forty-four, and most are married and have children. The typical Senator attended an institution of higher learning and is a member of several civic or professional organizations. Interestingly, most of the Senators were born outside of Florida, but were involved in public service in the state before they became Senators.

The Senate convenes in regular session on the first Tuesday after the first Monday in April each odd-numbered year. The Legislature may by law set its convening date in even-numbered years, but the date is usually the same as in odd-numbered years.

The Senate may also be called into special session by the Governor, by the leadership of the Senate, or by petition of the Senators. The Senate meets



SHERMAN S. WINN
President Pro Tempore

in regular session for sixty consecutive days (forty-four working days), although the session may be extended at the will of the Senate, with the concurrence of the House.

The President of the Senate is the presiding officer. He is designated by members of the majority party and is elected by the members of the Senate to a two-year term. The Senators also elect a President Pro Tempore to a two-year term. Members of the minority party elect a minority leader and a minority leader pro tempore to serve for two years. The President of the Senate derives much of his authority from his power to appoint committee members and chairmen, to refer bills to committees at his discretion, and to preside over meetings of the Senate. The President Pro Tempore acts in the absence of the President.

The Senate is often referred to as the upper house of Florida's Legislature. One reason for this is that many of its members "graduate" to the Senate from the House of Representatives. Another reason is that Florida's Legislature, like most others in our country, is patterned after the British Parliament, which has an "upper" and a "lower" house. The Senate leans heavily upon tradition; it is slow to change.

Actually, the Senate and the House of Representatives are equal, except that the House of Representatives has three times as many members as the Senate, and therefore each Senator represents three times as many people as each member of the House.

Together, these two bodies — with coequal duties — form the legislative branch of our state government and work to promote the general welfare of the citizens by determining policies and programs and by guarding the public interest.



JOE BROWN
Secretary



JOHN D. MELTON
Sergeant at Arms

OPPOSITE: An interior view of the Senate Office Building shows the fountain and plants on the entrance level and the oversize hanging plants that brighten up the offices in the building.



**DEMPSEY J. BARRON****Democrat, District 3
Dean of the Senate**

Attorney, businessman and rancher **b.** March 5, 1922 in Andalusia, Ala. Moved to Florida in 1924 **e.** Florida State University, B.S.; University of Florida, J.D. **m.** Louverne Hall of Graceville **c.** Steve and Stuart **affiliations** member of Panama City-Bay County Military Affairs Committee; member of Panama City-Bay County Chamber of Commerce and Committee of 100; member of Fourteenth Judicial Circuit, Bay County, Florida and American Bar Associations; member of National Conference of State Legislators **legislative service** House of Representatives, 1956-60; elected to Senate in 1960 and reelected subsequently; President Pro-

Tempore, 1967-68; Senate President, 1974-76 **military service** U.S. Navy, Pacific and European Theatres during World War II **highlights** president of Freshman Club in House of Representatives, 1957; nominated as "Most Outstanding Member of the Senate," 1961; Florida Jaycees Good Government Award, 1966; first runner-up for "Most Effective in Debate in Senate," 1967 (Allen Morris Award); second runner-up for "Most Effective, Valuable, All-Around Member of Senate," 1967 (Allen Morris); "Most Effective in Debate in Senate," 1971 (Allen Morris Award); "Most Effective in Committee," 1972 (Allen Morris Award); nominated as "Most Outstanding Legislator" in St. Petersburg Times poll, 1972; "Most Effective Member of Senate," 1974 and 1975 (Allen Morris Awards); Freedom Heritage Award of Florida Academy of Family Physicians, 1976; Tampa Bay Good Government Award, 1975-76; Florida March of Dimes Award, 1976 **recreation** hunting and fishing **addresses** (mailing) P.O. Box 1638, Panama City 32402 (residence) 2311 Magnolia Drive, Panama City 32401 **telephones** (business) 904 785-7456 (residence) 904 234-2897.

**LEW BRANTLEY****Democrat, District 8
President of the Senate**

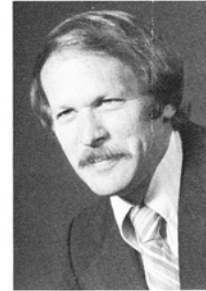
President of Brantley Sheet Metal Co., Inc.; director of First Guaranty Bank and Trust; real estate **b.** August 3, 1937 in McRae, Ga. Moved to Florida in 1948 **e.** Jacksonville University **m.** Catherine Dent of Jacksonville **c.** Richard, Karen, Linda, Robert and Allan **affiliations** Masons; Scottish Rite; Shrine; Rotary Club **legislative service** elected to House of Representatives in 1966, reelected in 1967 and 1968; elected to Senate in 1970, reelected in 1974 **church** Episcopal **military service** U.S. Army Reserve **highlights** West Duval Jaycees Distinguished Award; Jax Jaycees "Good Government Award;" service award from Jacksonville Firefighters; service

award from Florida Firefighters; service award from Fraternal Order of Police; distinguished service award from Department of Florida American Legion; "Man of the Year" award from Propeller Club of United States/Port of Jacksonville; "Boss of the Year" award from Jacksonville chapter of National Secretaries Association; "Most Effective Member of the Senate," 1976 (Allen Morris Award); J. Turner Butler Award as "Outstanding Member of the Duval Delegation," 1976 **addresses** (mailing) 420 Copeland St., Jacksonville 32204 (residence) 4659 Lancelot Lane, Jacksonville 32210 **telephones** (district) 904 355-2616 (residence) 904 388-0720.

**BETTY CASTOR****Democrat, District 23**

Educator **b.** May 11, 1941 in Glassboro, N.J. **e.** Glassboro State College, B.A., 1963; University of Miami, M.A., 1968 **m.** Judge Donald F. Castor of Tampa **c.** Kathy, Karen and Frankie **affiliations** League of Women Voters; PTA of Hillsborough County; Save Our Bay; Democratic Women's Club; University of South Florida Council of Advisors; Tampa Bay Area Committee on Foreign Relations **legislative service** elected to Senate in 1976 **other public service** Hillsborough County Commissioner, 1972-76, chairman 1975-76; Hospital and Welfare Board of Hillsborough County, 1972-76, chairman 1973-74; Environmental Protection Commission of Hillsborough County, 1972-76, chairman 1973-74; member of

Hillsborough County Aviation Authority, 1974-75; Tampa Bay Regional Council, 1972-76; Tampa Bay Area Rapid Transit Authority, 1973-76, chairman 1975-76; **church** Lutheran **recreation** tennis and swimming **addresses** (business) 4100 W. Kennedy Blvd., Suite 231, Tampa 33609 (residence) 3020 Samara Drive, Tampa 33618 **telephones** (business) 813 272-6830 (residence) 813 933-4793.

**DON CHAMBERLIN****Democrat, District 19**

Teacher **b.** December 13, 1935 in Dunedin **e.** St. Petersburg Junior College; Florida State University, B.A., 1959; M.A., 1968; president of Pi Kappa Alpha fraternity **m.** Therese M. "Terry" Chamberlin of Ft. Lauderdale **c.** Karen Leslie and Jeffrey Drake **affiliations** Pinellas Classroom Teachers Association, board of directors, former vice president, president; Florida Teaching Profession, board of directors, executive committee; National Education Association; Suncoast Chamber of Commerce, education committee; Pinellas, Florida and National Council on Social Studies **legislative service** elected to Senate in 1976 **church** Episcopal **highlights** St. Petersburg Junior College Athlete of the Year **addresses**

(business) 307 S. Osceola Ave., Clearwater 33516 (residence) 2256 Curtis Drive, South, Clearwater 33516 **telephones** (business) 813 461-2072 (residence) 813 531-5520.

**DONNELL C. "Don" CHILDERS****Democrat, District 28**

Insurance claims representative **b.** March 3, 1932 in Skipperville, Ala. **e.** Troy State University, B.S., 1960 **m.** Kay Bess of Miami **c.** Lisa, Don, Jr. and Timothy **affiliations** past treasurer and board member of Christian Manors, Inc. (senior citizens home in West Palm Beach); past member of Boy Scouts of America; past member of Executive Democratic Committee, Palm Beach County; member of local Democratic clubs, Palm Beach County; board member of First Forest Hill Bank, West Palm Beach **legislative service** elected to Senate in 1974 **church** Baptist **military service** U.S. Air Force **highlights** Florida delegate to Democratic National Convention in 1972; Florida delegate to Democratic National Mini-

Convention in 1974 **recreation** fishing, hunting and football **address** 2700 Forest Hill Blvd., West Palm Beach 33406 **telephones** (business) 305 964-6464 (residence) 305 965-2002.

**W.D. CHILDERS****Democrat, District 1**

Retail merchant **b.** November 25, 1933 in Wright **e.** Florida State University, B.S., 1955 **m.** Ruth A. Johnson of Wakeeney, Kansas **c.** Gail, Jeanna, Karen and Marvel **affiliations** Lions Club; Farm Bureau; PTA; board of directors of Escambia Blood Bank, Inc.; Ferry Pass Lodge #348 **legislative service** elected to Senate in 1970, reelected subsequently **church** Baptist **highlights** "Most Effective in Debate," 1975 and 1976 (Allen Morris Awards); taught high school science and mathematics in Santa Rosa County before going into private business **recreation** fishing, hunting and camping **address** P.O. Box 3327, Pensacola 32506 **telephones** (business) 904 453-1241 (residence) 904 456-4260.



EDGAR M. "Ed" DUNN, Jr.
Democrat, District 10

Attorney **b.** February 14, 1939 in Daytona Beach **e.** University of Florida, B.A., 1962; University of Florida Law School, Juris Doctor, 1967 **m.** Margaret McCurry of Daytona Beach **c.** Wes, Kathleen, Christine and Julie **affiliations** Daytona Beach Chamber of Commerce; member of Florida Chapter of National Council on Crime and Delinquency; The Florida Bar; University of Florida Law Center Council; Daytona Beach Jaycees; Civic League of the Halifax Area; Florida Prosecuting Attorneys Association; National District Attorneys Association; Daytona Beach Mental Health Association; Knights of Columbus; American Legion; chairman of Organized Crime Task Force **legislative service** elected to Senate in 1974 **church**

military service U.S. Army Infantry & Counter-intelligence, captain **highlights** "Outstanding Young Man of the Year," 1970, Daytona Beach Jaycees; "Man of the Year," 1970, Daytona Beach Civitan Club; "Man of the Year," 1970, Knights of Columbus, Daytona Beach Chapter; "Furtherance of Justice Award," 1973, Florida Prosecuting Attorneys Association; "Meritorious Service Award," 1972, for civilian service in U.S. National Guard; past president of Daytona Beach Jaycees; Assistant State Attorney (7th Judicial Circuit), 1970 and 1973 **recreation** photography, flying and fishing **addresses** (business) P.O. Drawer 2600, Daytona Beach 32015 (residence) 450 N. Yonge St., Ormond Beach 32074 **telephones** (business) 904 258-1776 (residence) 904 677-7487.



GEORGE FIRESTONE
Democrat, District 36

Investor and real estate **b.** May 13, 1931 in New York, N.Y. Moved to Florida in 1936 **m.** Helene A. Eiserman of Germany **affiliations** past president of Miami Junior Chamber of Commerce; past president of Northwest Miami Property Owner's Association; past vice president of Dade County Council of Civic Organizations; Dade County Young Democrats; Tiger Bay Club; National Legislative Conference Committee on Legislative Training; president of National Society of State Legislators in 1972-73, vice president, 1969, treasurer, 1968, and board of governors. 1967 **legislative service** elected to the House of Representatives in 1966, reelected in 1968 and 1970; elected to Senate in 1972, reelected in 1974 **other**

public service chairman of Dade County Personnel Advisory Board; chairman of City of Miami Economic Advisory Board **church** Jewish **military service** U.S. Army, European service **highlights** selected "Outstanding Young Man of America" by U.S. Jaycees in 1965; nominated for St. Petersburg Times "Most Valuable Member of the House" award in 1969 and 1972; recipient of Miami Jaycees "Good Government Award" in 1972; nominated for St. Petersburg Times "Most Valuable Member of the Senate" award in 1974; "Outstanding First Term Member of the Senate," 1974 (Allen Morris Award); Sierra Club's Florida Chapter Legislative Award for 1974 **recreation** hunting and fishing **address** 2424 S. Dixie Highway, Miami 33133 **telephone** 305 854-3445.



TOM GALLEN
Democrat, District 24

Attorney with Miller, Gallen, Kaklis & Venable **b.** December 28, 1932 in Tampa **e.** University of Tampa; Florida State University, B.S., 1957; University of Florida College of Law, Juris Doctor, 1960 **m.** Linda C. Pruitt of Bradenton **c.** Tommy, Mary, Kathleen and Patrick **affiliations** Florida Bar Association; Academy of Florida Trial Lawyers; Florida Cattlemen's Association; American Legion; VFW; DAV **legislative service** elected to House of Representatives in 1966, reelected in 1968 and 1970; elected to Senate in 1972, reelected in 1974 **church** Catholic **military service** sergeant U.S. Paratroopers 10th Special Forces "Green Berets," Bad Tolz, Germany **recreation** handball, water skiing and flying **addresses**

(business) 701 Eleventh St. West, Bradenton 33505 (residence) 5408 Ninth Ave. Drive W., Bradenton 33505 **telephones** (business) 813 746-4121 (residence) 813 746-7681.



JIM GLISSON
Democrat, District 11

Investments and chiropractor **b.** January 6, 1939 in Jackson County **e.** Palmer College, D.C., 1962 **m.** Flora Wells of Covington, Ga. **c.** Randy **affiliations** member and leader in Boy Scouts of America, Boy's Clubs of America, Lake County Boy's Club; United Appeal; American Cancer Society; Chamber of Commerce; Jaycees; Kiwanis; Farm Bureau; Elks; Red Cross; Cattleman's Association **legislative service** elected to House of Representatives in 1968, reelected in 1970; elected to Senate in 1972, reelected without opposition in 1976 **other public service** member of Florida Bicentennial Commission **church** Baptist **military service** National Guard **highlights** Jaycees "Most Outstanding Young Man in Community;" Florida

Optometry Association "Most Valuable Legislator," 1971; American Academy of Pediatrics award for service to children, 1974; Florida Podiatry Association "Outstanding Legislator of the Year," 1975; recognized by Florida Education Association for leadership role in education; lifetime honorary member of Florida Sheriff's Association **recreation** history, reading and swimming **addresses** (business) P.O. Box 296, Tavares 32778 (residence) 1001 Pinetree Drive, Eustis 32726 **telephones** (business) 904 343-5827 (residence) 904 357-6554.



JACK D. GORDON
Democrat, District 35

President of Washington Federal Savings and Loan Association of Miami Beach **b.** June 3, 1922 in Detroit, Mich. **e.** University of Michigan, B.A., 1942 **m.** Barbara Yaffey of Norfolk, Va. **c.** Andrew, Deborah and Jonathan **affiliations** member of National Governing Council, American Jewish Congress; past president of South Florida Division, American Friends of the Hebrew University; chairman of South Florida Committee, 1973 Israel Economic Conference; former director of National Association of Better Business Bureaus and National Council of Senior Citizens; former state chairman of Concerned Democrats of Florida; honorary member of United Steelworkers of America **legislative service** elected to Senate in 1972,

reelected without opposition in 1976 **other public service** member of Dade County Board of Public Instruction, 1961-69; chairman of Miami Beach Tourist Development Authority, 1971-72; chairman and member of Miami Beach Housing Authority, 1949-56; member of Dade County Community Relations Board, 1972; member of Dade County Economic Opportunity Program Board, 1964-67; member of Governor's Commission on Quality Education in Florida, 1966; member of U.S. Advisory Panel on Teacher Training, 1968-71; member of U.S. Advisory Committee on State Departments of Education, 1965-70; housing finance consultant to U.S. State Department in Latin America and Africa, 1959-71; finance consultant to United Nations Technical Assistance Program, 1963-70 **church** Jewish **military service** U.S. Army, combat infantryman **highlights** recipient of Americanism Award from Veterans of Foreign Wars; School Bell Award from Dade County Classroom Teachers Association; Living Religion Award from First Unitarian Church; Outstanding Citizens Award from Miami Beach Taxpayers Association; citation for encouraging savings and home ownership from Costa Rican National Institute of Housing; ACLU Stanley Milledge Award, 1973 **recreation** boating **addresses** (business) 1701 Meridian Ave., Miami Beach 33139 (residence) 48 Palm Island, Miami Beach 33139 **telephones** (business) 305 674-6608 (residence) 305 538-4875.



WILLIAM D. "Bill" GORMAN
 Republican, District 15

Real estate **b.** March 31, 1920 in Baltimore, Md. Moved to Florida in 1959 **e.** Lehigh University, B.A., 1942; Beta Theta Pi; lacrosse **m.** Harriet (Toddy) Wickham of Swarthmore, Pa. **c.** Timothy and Rebecca **affiliations** Orlando-Winter Park Board of Realtors; board of directors of Orlando Humane Society; past director of Orlando Area Chamber of Commerce; associate member of Young Republican Club; Council of 1000 **legislative service** elected to House of Representatives in 1967, reelected subsequently until 1976; elected to Senate in 1976 **other public service** Aviation Advisory Board of the City of Orlando **church** Presbyterian **military service** U.S. Naval Reserve, aviation cadet; U.S. Marine Corps, major

highlights General Motors executive for 13 years; Florida delegate to National Legislative Conference in 1974; chairman of Orange County Legislative Delegation from 1970-76 **recreation** flying and tennis **addresses** (business) P.O. Box 2381, Orlando 32802 (residence) P.O. Box 305, Tangerine 32777 **telephones** (business) 305 843-0195 or 420-3289 (residence) 904 383-6500.



D. ROBERT "Bob" GRAHAM
 Democrat, District 33

Cattle and dairy farming, real estate development, attorney **b.** November 9, 1936 in Dade County **e.** University of Florida, B.A., 1959; Harvard Law School, LL.B., 1962; Phi Beta Kappa; Florida Blue Key; chancellor of Honor Court; debate team; president of Sigma Nu and Phi Eta Sigma **m.** Adele Khoury of Miami Shores **c.** Gwendolyn Patricia, Glynn Adele, Arva Suzanne and Kendall Elizabeth **affiliations** Hialeah-Miami Springs Chamber of Commerce; Urban Land Institute; 4-H Youth Foundation; National Commission on Reform of Secondary Education; National Foundation for Improvement of Education; Dade County, Florida and American Bar Associations; Education Commission of the States; Southern Regional

Education Board; Institute for Educational Leadership; National Committee for Citizens in Education **legislative service** elected to House of Representatives in 1966, reelected in 1968; elected to Senate in 1970, reelected in 1972 and 1976 **church** United Congregational Church of Christ **historical** Ernest R. Graham, father, was a member of Senate from 1936-44; Mrs. Ina S. Thompson, aunt, was first woman to serve in Governor's "Little Cabinet" as State Motor Vehicle Commissioner, 1955-61 **highlights** "Second Most Outstanding First-Session Member" of the House, 1967 (Allen Morris Award); St. Petersburg Times award as "Most Valuable Legislator," 1972; Tallahassee Democrat "Lawmaker-Newsmaker of the Year," 1972; awards from Conservation 70s, Florida Wildlife Federation and Sierra Club for outstanding work in the field of conservation, 1972; "Most Valuable Member" of the Senate, 1973 (Allen Morris Award); Florida Association of Community Colleges and Florida School Board Association legislative awards, 1974; "Second Most Effective Member" of the Senate, 1976; Capitol Press Corps nomination as "Most Valuable Member" of the Senate, 1975 and 1976 **recreation** golf and tennis **addresses** (mailing) 14340 N.W. 60th Ave., Miami Lakes 33014 (residence) 16141 Aberdeen Way, Miami Lakes 33014 **telephones** (business) 305 821-1137 (residence) 305 821-0631.



MATTOX S. HAIR
 Democrat, District 9

Attorney **b.** January 18, 1938 in Coral Gables; reared in Live Oak **e.** Florida State University, B.S., 1960; student body president; student body vice president; president of KA fraternity; FSU Gold Key; FSU Hall of Fame; permanent class president and Outstanding Senior Man, 1960; Who's Who in American Colleges and Universities; University of Florida, J.D., 1964; Phi Delta Phi legal fraternity **affiliations** Fellowship of Christian Athletes, Jacksonville chapter; Jacksonville, Florida and American Bar Associations; Florida Bicentennial Commission; Sons of American Legion, Post 137; associate member of Jacksonville Jaycees; associate member of West Duval Jaycees **legislative service** elected to House of

Representatives in 1972; elected to Senate in 1974, reelected in 1976 **church** Baptist **military service** U.S.

Army, first lieutenant; Florida National Guard, captain **highlights** assistant attorney general, 1964-65; legislative aide, 1957 and 1959 sessions **recreation** tennis and golf **addresses** (mailing) P.O. Box 447, Jacksonville 32201 (residence) 2950 St. Johns Ave. #12, Jacksonville 32205 **telephones** (business) 904 358-8930 (residence) 904 387-4504.



WARREN HENDERSON
 Republican, District 25

Professional numismatist and Investments **b.** November 14, 1927 in Exeter, N.H. Moved to Florida in 1955 **e.** Denison University, B.A., 1951; Phi Delta Theta; University of Florida College of Law **m.** Polly Schurr of Cleveland, Ohio **c.** Warren C., Susan and Wendy **affiliations** past exalted ruler of Elks; Legion of Honor, Order of DeMolay; Masons, Venice Lodge #301 F&AM, York Rite-Trinity Commandery #16 K.T. Miami Conclave-Red Cross of Constantine, Scottish Rite-Tampa Consistory, Royal Order of Scotland; American Legion; past president of Venice Area Chamber of Commerce; past director of Sarasota Chamber of Commerce; chairman of United Fund; life member of South Sarasota County Memorial

Hospital Association; life member of American Numismatic Association; Advisory Council of Order of DeMolay; Florida Historical Society; Sarasota County Historical Society; International Oceanographic Foundation; National Wildlife Federation; National Audubon Society; Izaak Walton League; Florida Conservancy; Save Our Bays Association; Florida Bicentennial Commission, 1972-73; Florida Energy Committee, 1973; vice president and trustee of C-70's advisory council on Environmental Education, 1973-76 **legislative service** elected to Senate in 1963; elected to House of Representatives in 1966; reelected to Senate in 1967 and subsequently **other public service** member and chairman of Sarasota County Commission, 1960-63; chairman of Manatee-Sarasota Airport Authority; chairman of Sarasota County Water and Navigation Control Authority, 1960-63; Juvenile Merit Board, 1960-63; Sarasota County Planning and Zoning Commission, 1956-57; chairman of Sarasota County Civil Defense Council, 1960-63; vice chairman of West Coast Inland Navigation District, 1960-63; steering committee for Project Manasota 88; advisory council for Sarasota County Alcoholic Rehabilitation Center; state co-chairman of March of Dimes, 1971; U.S. Assay Commission, 1972 and 1976 **highlights** Senate Republican Leader, 1970-72; Outstanding Conservationist in Sarasota County, 1968; Governor's Award for Outstanding Legislator in Conservation, 1969; Sarasota County award for Water Resources Conservation, 1972; FSDA Senator of the Year, 1973; runner-up for "Most Valuable Member of Senate," 1970 (Allen Morris Award); runner-up for St. Petersburg Times award, 1970; Florida Podiatry Award, 1975; Distinguished Alumni Award, Denison University, 1976; Florida Pediatric Society commendation, 1976 **church** Presbyterian **military service** U.S. Navy **recreation** hunting and golf **addresses** (business) P.O. Box 3888, Sarasota 33578 (residence) Golden Beach Blvd., P.O. Box 1358, Venice 33595 **telephones** (business) 813 958-2338 (residence) 813 488-5941.



VERNON C. HOLLOWAY
 Democrat, District 39

Electrical contractor **b.** September 5, 1919 in Richmond, Va. Moved to Florida in 1946 **e.** Virginia Mechanics Institute; University of Miami **m.** Roberta M. Galbraith of Miami **c.** Vernon, Jr., Lee Anthony and Jean Estelle **affiliations** past president of the Florida Association of Electrical Contractors; past president and past governor of the South Florida Chapter of the National Electrical Contractors Association; past president of the State Electrical Masters Association; member of the National Fire Protection Association Code Panels; former member of City of Miami Building Board of Appeals; member of NECA Codes and Standards Committee; member of Institute of Electrical and Electronics Engineers, Inc.; past

president of Rotary Club of Allapattah; past potentate of the Mahi Shrine Temple; past scoutmaster of City of Opa Locka Boy Scout Troop No. 304; past president of Council of Christ the King Lutheran Church; member of Royal Order of Jesters, Scottish Rite, York Rite, DeMolay, Order of Eastern Star; past Grand Orator for Grand Lodge of Florida F.A.M., Opa Locka Lodge No. 287, F.A.M.; Red Cross of Constantine **legislative service** elected to House in 1966, reelected in 1968, 1970 and 1972; elected to Senate in 1974, reelected in 1976 **military service** U.S. Army Engineers, Pacific Theatre **recreation** flying, golf and boating **address** 6444 N.E. Fourth Ave., Miami 33138 **telephones** (business) 305 754-9594 (residence) 305 661-4186.



HARRY A. JOHNSTON II
Democrat, District 26

Attorney **b.** December 2, 1931 in West Palm Beach **e.** Virginia Military Institute, B.A., 1953; University of Florida Law School, LL.B., 1958 **m.** Mary Otley of Montclair, N.J. **c.** Victoria Leigh and Rebecca Anne **affiliations** Rotary Club; director of Norton Art Gallery; Director of Girl Scouts of America; **Palm Beach County, Florida and American Bar Associations** **other public service** former member of Planning Board of West Palm Beach; former member of Library Board; Assistant County Attorney of Palm Beach County; presently attorney for Palm Beach County Area Planning Board **highlights** president of Palm Beach County Bar Association, 1968; president of West Palm Beach Rotary, 1970; president of

Palm Beach County United Fund, 1972 **military service** U.S. Army Armored Division, 1953-55 **church** Presbyterian **recreation** handball, tennis, swimming and fishing **addresses** (mailing) P.O. Box 48, West Palm Beach 33402 (residence) 221 Monroe Drive, West Palm Beach 33405 **telephones** (business) 305 659-6600 (residence) 305 655-1530.



PHILIP D. "Phil" LEWIS
Democrat, District 27

Real estate **b.** September 27, 1929 in Omaha, Neb. Moved to Florida in 1931 **e.** Georgetown University; St. Francis College, honorary doctor of law degree, 1967 **m.** Maryellen Howley of West Palm Beach **c.** Juliana, Paulette, Diana, Mark, Mary Patricia, Daniel, Suzanne, Neil, Kevin Cletus **affiliations** Riviera Beach Kiwanis Club; Society of Industrial Realtors; National Institute of Real Estate Brokers; Northern Palm Beach County Board of Realtors; Palm Beach County Home Builders Association; State Chamber of Commerce; West Palm Beach Chamber of Commerce; North Palm Beach Chamber of Commerce **legislative**

service elected to Senate in 1970, reelected in 1972 and 1976 **church** Catholic **military service** Naval Reserve, Seebies **highlights** Governor's Industrial Appreciation Award, 1964; Liberty Bell Award from Bar Association, 1968; "CHIEF" award for outstanding services to higher independent education in Florida, 1970; Elmer Hedrick Award from Home Builders and Contractors Association of Palm Beach County as Citizen of the Year, 1972; Florida Farm Bureau Federation Award, 1973; Florida Agribusiness Award, 1974; Outstanding Legislative Effort award from the Lions Industries for the Blind, 1974; nominated for St. Petersburg Times award as "Most Valuable Member of the Senate," 1975; Florida Green Belt Award from the Florida Forest Festival, 1975; Florida Agriculture Council award, 1976; Hispanic Pageant Appreciation Award for outstanding efforts on behalf of migrants, 1976 **recreation** fishing and hunting **addresses** (district) 608 New Comeau Bldg., Clematis St., West Palm Beach 33401 (business) 31 W. 20th St., Riviera Beach 33404 (residence) 317 Edmor Road, West Palm Beach 33401 **telephones** (district) 305 832-3876 (business) 305 844-0201 (residence) 305 833-7196.



KENNETH H. "Buddy" MacKAY, Jr.
Democrat, District 6

Attorney with Pattillo, MacKay and McKeever; citrus groves **b.** March 22, 1933 in Ocala **e.** Davidson: University of Florida, B.S./B.A., 1954, LL.B., 1961; Florida Blue Key; University of Florida Hall of Fame **m.** Anne Selph of Ocala **c.** Ken, John, Ben and Andy **affiliations** American, Florida and Marion County Bar Associations **legislative service** elected to House in 1968, reelected in 1970 and 1972; elected to Senate in 1974 **church** Presbyterian **military service** U.S. Air Force **highlights** "Most Outstanding First Term Member," 1969 and 1970 (Allen Morris Awards); "Most Effective in Committee," 1972 (Allen Morris Award); "Most Valuable Member of the House," 1971 and 1973, St. Petersburg Time Awards; "Most Valuable Member

of the Senate," 1975 and 1976, St. Petersburg Times Awards **address** P.O. Box 1668, Ocala 32670 **telephones** (business) 904 732-2255 (residence) 904 629-5881.



DAVID H. "Dave" McCLAIN
Republican, District 21

Attorney with McClain and Walkley **b.** June 4, 1933 in Macon, Ga. Moved to Florida in 1956 **e.** Duke University, B.A. 1957; George Washington University, M.A., 1961; Stetson College of Law, LL.B., 1961; Beta Theta Pi; Delta Theta Phi **m.** Leslie McNevin of Tampa **c.** Mrs. Van (Linda) Wheeler **affiliations** Hillsborough County, Florida and American Bar Associations; Mason; Shriner; Sertoman (Interbay Chapter); Tampa Historical Society; Tampa Torch Club; Tower Club of Tampa; Krewes of Venus **legislative service** elected to Senate in May, 1970, reelected in 1972 and 1976 **other public service** member of Board of Public Relations and Convention Facilities for the City of Tampa, 1964-70, vice chairman, 1969-70; Florida

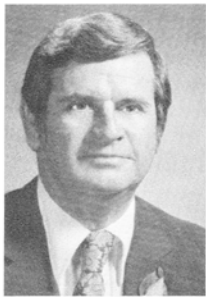
Law Revision Council; past chairman of Unauthorized Practice of Law Committee, Hillsborough County Bar Association, 1969; Florida Bar Constitution Committee, 1970 and 1972; Florida Bar Attorneys' Fees Committee, 1975-76; Hillsborough County Republican Executive Committee, legal advisor, 1969-70; elected Hillsborough County Republican State Committeeman in 1974, reelected in 1976; elected assistant treasurer of Republican Party of Florida in 1974, reelected in 1976; Supreme Court Appellate Review Committee, 1975 **church** Protestant **military service** U.S. Army, 1st Infantry Division **historical** Joseph A. McClain, Jr., father, served in Senate from 1967 until his death in March, 1970 **highlights** awarded Scottish Rite Fellowship to the George Washington University from Tampa Consistory, 1958; Board of Public Relations and Convention Facilities "Outstanding Leadership and Service Award," 1970; Tampa Jaycees "Good Government Award," 1971; Independent Insurance Agents of Greater Tampa, "Outstanding Leadership Award" for landmark safety legislation, 1972; Greater Tampa Citizens Safety Council "Green Cross Award" for outstanding service to accident prevention, 1972; Florida Audio-Video News Network "Most Valuable Republican Freshman Senator" award, 1972; nominated for St. Petersburg Times award for "Most Effective Senator in Committee," 1970; Tampa Historical Society "D.B. McKay Award" for dedication to Florida History, 1973; Tampa Bay Committee for Good Government "Spessard L. Holland Memorial Award," 1975, "Second Most Effective in Debate," (Allen Morris Award) 1976; Florida Right to Life "Pro Life Award," 1976 **recreation** automobile racing, reading and sports spectating **addresses** (mailing) 605 S. Boulevard, Tampa 33606 (residence) 121 S. Manhattan, Tampa 33609 **telephones** (district) 813 272-6700 (business) 813 251-8081 (residence) 813 876-6144.



KENNETH M. "Ken" MYERS
Democrat, District 37

Attorney **b.** March 11, 1933 in Miami **e.** University of North Carolina, A.B., 1954; University of Florida Law School, LL.B., 1957; Phi Beta Kappa; President of Phi Alpha Delta; Phi Sigma Alpha; Tau Epsilon Phi; freshman swimming team; track team; fencing team; president of Debate Council and member of Debate Team; Student Council; Student Honor Court; Order of Golden Fleece; executive editor of University of Florida Law Review and state champion of Law School Moot Court competition **affiliations** Miami-Dade County Chamber of Commerce; board of directors of Tiger Bay Club; Dade County, Florida and American Bar Associations **legislative service** elected to House of Representatives in 1964, reelected in 1966;

elected to Senate in 1968, reelected subsequently **other public service** member of Governor's Council on Criminal Justice; Florida condominium Commission; Governor's Committee on Crime Prevention; Florida Health Planning Council **church** Jewish **recreation** fishing, swimming, boating and snow skiing **highlights** "Most Valuable Second Term Member" in the House, 1967 (Allen Morris Award); "One of Ten Most Valuable Members of the House," St. Petersburg Times Capitol Press Poll, 1967; "One of Five Outstanding Young Men of Florida," Florida Jaycees award, 1967; "Outstanding Young Man of Miami," Miami Jaycees award, 1967; "Most Valuable Freshman Senator," 1969 (Allen Morris Award); nominated as "One of Four Most Valuable Members of the Senate," St. Petersburg Times Capitol Press Poll, 1971, 1972, 1973 and 1974 **addresses** (business and mailing) 1428 Brickell Ave., Miami 33131 (residence) 2451 Brickell Ave., Miami 33131 **telephones** (business) 305 371-9041 or 305 371-7819 (residence) 305 854-2838.



CURTIS PETERSON
Democrat, District 12

Nurseryman and Registered Landscape Architect **b.** August 23, 1922 in Lakeland **e.** George Washington University; Florida Southern College; Sigma Nu **m.** Ethel Schultz of Chicago, Ill. **c.** Curtis III and Peter **affiliations** past president of Florida Nurserymen and Growers Association; American Association of Nurserymen; vice president of Agribusiness Institute of Florida; past president of Agricultural Tax Council; Florida Chamber of Commerce; past chairman of Florida Agricultural Advisory Council; Lakeland Chamber of Commerce; Optimist; director of Polk County Association for Retarded Citizens; board of SHARE Council, University of Florida; Polk County Heart Association; board of Florida Sheriffs' Girls Villa; leader of Boy Scouts of America; chairman of Campaign Committee of Polk County Democratic Executive Committee; Education Commission of the States; Council of State Governments; Florida Right to Read Advisory Council; Florida Community Education Council **legislative service** elected to Senate in 1972, reelected in 1974 **church** Baptist **military service** U.S. Coast Guard, World War II

convoy duty in Atlantic and Caribbean **historical** J. Hardin Peterson, uncle, was U.S. Congressman from Florida for 18 years; E.J. Etheredge, cousin from DeSoto County, elected to Florida House in 1921 and to Florida Senate District 27 in 1923, 1925 and 1927; David Godfrey Harmon Geiger, great grandfather from Lafayette County, elected to Florida House in 1907; David Clayton Geiger, great uncle from Lafayette County, elected to Florida House in 1923 and 1933 **highlights** Gamma Sigma Delta Merit Award, 1976; Florida Farm Bureau Legislator of the Year, 1976; Distinguished Service Award from Florida Agricultural Advisory Council, 1961-1972; Senator of the Year, Florida Association for Retarded Children, 1974; Outstanding Service Award, Polk County Association for Retarded Children, 1974; Florida Nurseryman of the Year, 1962; Scouter Award, 1961 **recreation** travel, hiking and reading **address** P.O. Box 180, Eaton Park 33840 **telephones** (office) 813 683-9781 (residence) 813 683-2370.



KENNETH A. "Ken" PLANTE
Republican, District 14
Minority Leader

Renderer, president of Central Florida Drum, Inc., and vice president of L.D. Plante, Inc. **b.** December 17, 1939 in Orlando **e.** University of Florida; track **m.** Sandra Lee Crawford of Winter Park **c.** Kenny, Jimmy, Melanie, Jon, Mark, Colleen and Michelle **affiliations** past director and first vice president of Winter Park Junior Chamber of Commerce; director of Orlando Area Chamber of Commerce; Winter Park Chamber of Commerce; Orlando Track Club; Florida Tourist Advisory Council; Orange County Young Republicans; Central Florida Restaurant Association; executive committee of the National Conference of State Legis-

latures **legislative service** elected to Senate in 1967 as second youngest member in history, reelected in 1968, 1972 and 1974; Republican co-floor leader for 1973-74; Minority Leader for 1977-78 **church** Catholic **highlights** South Seminole Jaycees "Good Government Award," 1968; Orlando Jaycees "Good Government Award," 1972; honorary chairman of Seminole County Association for Retarded Children's Special Olympics, 1973; School Board Association "Outstanding Legislator from the Senate in the Field of Education," 1973; Orlando Central Business District, Inc. "Good Guys Award," 1973; only Floridian on 12 member U.S. team sponsored by American Council of Young Political Leaders that participated in 20-day exchange program in 1973 to five major cities in U.S.S.R., "Most Effective in Committee," 1974 and 1975 (Allen Morris Awards); runner-up for "Most Effective in Senate," 1975 (Allen Morris Award); Dade County Professional Educators "Golden Apple" Award, 1975; Florida Farm Bureau Federation Legislative Award in the Senate, 1975; Central Florida Pediatric Society Award for Outstanding Support of the Neonatal Intensive Care Program, 1975 **recreation** track, fishing and camping **addresses** (district) 400 New York Ave., Suite 205, Winter Park 32789 (business) Route 2, Oviedo 32765 (residence) 2225 Via Tuscany, Winter Park 32789 **telephones** (district) 305 628-4888 (business) 305 365-3241 (residence) 305 647-3079.



RALPH R. POSTON, Sr.
Democrat, District 38

President and Chairman of the Board of Poston Bridge & Iron, Inc. **b.** January 2, 1923 in Miami **e.** University of Miami and University of Houston **m.** Carolyn Sue Davis of Miami **c.** Ralph R., Jr., Mrs. Jerry (Dottye) Barrier and Mrs. Harry (Sherry) Jordan **affiliations** Mahi Shrine, Scottish Rite; Kiwanis; Tiger Bay Club; DAV; past president of Steel & Ornamental Erectors Associations of South Florida, Inc.; advisory board of Goodwill Industries; Sons of the American Revolution; South Dade Chamber of Commerce; chairman of Miami Area Urban Transportation System Policy Committee; member of National Committee on Traffic Laws & Ordinances; National Transportation Research Board; Dade County Citizens

Safety Council; member of Associated General Contractors; member of Board of Governors of South Miami Hospital; member of Citizens Board of University of Miami; member of Greater Miami Chamber of Commerce **legislative service** elected to House of Representatives in 1964; elected to Senate in 1966, reelected in 1968, 1972 and 1974; chairman of Senate Dade-Monroe Delegation **church** Methodist **military service** U.S. Navy **highlights** started Poston Bridge & Iron, 1950; award from U.S. Dept. of Traffic Safety as "Mr. Traffic Safety," 1972 **recreation** golf, paddleball and fishing **addresses** (business and mailing) 3103 N.W. 20th St. Miami 33142 (residence) 6282 S.W. 133rd St., Miami 33156 **telephones** (business) 305 635-7303 (residence) 305 667-2064.



RICHARD R. "Dick" RENICK
Democrat, District 40

Television director, film director and cinematographer with Renick Productions, television and film producers, public relations counselors, closed circuit television **b.** October 14, 1930 in New York, N.Y. Moved to Florida in 1940 **e.** St. Mary's High School, Miami **m.** Valerie Phillips of Miami **c.** Deborah K. and Karen V. **affiliations** American Legion; Elks; Moose; Third Degree Knights of Columbus; past vice president of North Miami Jaycees; past director of Miami Bayside Kiwanis Club; Dade County Young Democrats; Miami Beach Democratic Club; Lions Club of Coral Gables; vice president of Carriage Club **legislative service**

served in House of Representatives from November 1966-March 1967, reelected in 1968 and 1970; elected to Senate in 1974 **church** Catholic **recreation** fishing, cooking and photography **military service** U.S. Navy, sea duty in Pacific and Korean War **highlights** travelled around the world filming and directing television documentary films behind the Iron Curtain in the Soviet Union, Poland, East Germany, Hungary and Czechoslovakia **address** 1828 Ponce de Leon Blvd. Coral Gables 33134 **telephone** 305 446-2130.



HENRY B. SAYLER
Republican, District 20
Minority Leader Pro Tempore

President of Security Planning of Florida, Inc. C.L.U. **b.** January 16, 1921 in Savannah, Ga. Moved to Florida in 1941 **e.** U.S. Military Academy, B.S., 1943; soccer, polo, lacrosse, tennis **m.** Wylene Chapman of Columbus, Ga. **c.** Lee, Alan, Robin and Van **affiliations** director of Community Banks of Florida, Inc.; Kiwanis; Chamber of Commerce **legislative service** elected to Senate in 1966, reelected subsequently **church** Methodist **military service** U.S. Air Force Fighter Pilot, Distinguished Flying Cross, air medal with six clusters **highlights** commander of First Guided Missile Squadron, 1949-51; White House Aide, 1945-46 **recreation**

badminton, golf and fishing **addresses** (business and mailing) 4609 4th St. N., St. Petersburg 33703 (residence) 220 Rafael Blvd. N.E. St. Petersburg 33704 **telephones** (business) 813 527-5818 (residence) 813 894-5749.



DAN SCARBOROUGH
Democrat, District 7

Answer Phone of Jacksonville and Telephone Answering Service of St. Augustine
b. February 6, 1933 in Hortense, Ga. **e.** University of Florida, varsity football **m.** Virginia Zipperer of Jacksonville **c.** John, Vicki, Lynn and Karen **affiliations** Jaycees; Masons; Scottish Rite; Shrine **legislative service** elected to House of Representatives in 1966; elected to Senate in 1968, reelected in 1972 and 1976 **church** Methodist **military service** U.S. Marine Reserve **highlights** member of University of Florida's first Gator Bowl team, 1952; "Most Outstanding First Term member," 1970 (Allen Morris Award); "Second Most Effective Member," 1973 (Allen Morris Award) **recreation** aviation, golf and fishing **historical** J.C.

Strickland, grandfather, served in the Georgia Legislature, 1920-24 **addresses** (business and mailing) 404 W. Monroe St., Jacksonville 32202 (residence) 7144 Jubal Lane, Jacksonville 32210 **telephones** (business) 904 355-0726 (residence) 904 771-4347.



JAMES A. "Jim" SCOTT
Republican, District 31

Attorney **b.** January 14, 1942 in Pikeville, Ky. Moved to Florida in 1965 **e.** University of Kentucky, B.A., 1963; law degree, 1965; Sigma Nu; Phi Alpha Delta; **Debate and Discussion Team** **m.** Janice Ann Suskey of Miami **c.** Frank and Stacy Ann **affiliations** Florida, Kentucky and American Bar Associations; chairman of legislation committee of Broward Bar Association; Ft. Lauderdale Chamber of Commerce; Broward Minutemen Bicentennial Committee; American Arbitration Association; University of Kentucky Law Alumni Association; Ducks Unlimited; Hundred Club of Broward **legislative service** elected to Senate in 1976 **other public service** Associate Municipal Judge in Deerfield Beach, 1972; Broward Legislative delegation Attorney, 1972-74; Prosecutor in Deerfield Beach, 1973-76; board of directors, treasurer, of Legal Aid Service of Broward, 1974-76 **church** Presbyterian **military service** U.S. Coast Guard, 1965-68 **recreation** golf, hunting and riding **addresses** (business) 2000 E. Oakland Park Blvd., Fort Lauderdale 33306 (residence) 1732 N.E. 35 St., Fort Lauderdale 33306 **telephones** (district) 305 566-8600 (business) 305 566-5955 (residence) 305 563-6609.



SHERRILL NATHAN "Pete" SKINNER
Democrat, District 5

Agri-business **b.** November 12, 1942 in McAlpin **e.** University of Florida, B.A., 1973 **m.** Marcia Tucker of Spokane, Wash. **c.** Christopher and Jason **affiliations** American Legion; Elks; Masons; Quarterback Club; Branford Sportsman Club **legislative service** elected to House in 1974; elected to Senate in 1976 **church** Protestant **military service** U.S. Marine Corps **highlights** U.S. Peace Corps in India, 1966-68; Foreign Service Reserve in Caribbean, 1970-72 **recreation** hunting, fishing, camping, reading and chess **addresses** (business) Executive Park, 302 S. Marion St., Suite D-1, Lake City 32055 (residence) 1815 Division St., Lake City 32055 **telephones** (business) 904 752-0055 (residence) 904 752-0682.



GUY "Butch" SPICOLA
Democrat, District 22

Attorney **b.** February 27, 1938 in Tampa **e.** University of Florida, B.A., 1960; University of Florida Law School, LL.B., 1962; Alpha Tau Omega; Phi Delta Phi; Who's Who; Freshman and Sophomore Executive Council; intramural sports; John Marshall Bar Association **m.** Georgie Blevens of Tampa **c.** Brandon and Courtney **affiliations** Chamber of Commerce; Junior Chamber of Commerce; Ybor City Chamber of Commerce; Big Brothers; Merrymakers Club; University of Florida Alumni Association; Bay Area Trial Lawyers; Academy of Florida Trial Lawyers; American Trial Lawyers Association; American Jurisprudence Society; National Society of State Legislators; Tampa-Hillsborough County, Florida and American

Bar Associations; American Arbitration Association; Tampa Torch Club; Cigar City Sportsman's Society; director of Conservation 70s; Ducks Unlimited; American Wildlife Federation; Sierra Club; Save-Our-Bay; Audubon Society; American Heritage Gun Club; Florida Wildlife Federation **legislative service** elected to House of Representatives in 1966, reelected in 1968, 1970 and 1972; elected to Senate 1974 **other public service** attorney for Finance & Taxation Committee of House of Representatives, 1963; city prosecutor for Temple Terrace, 1963-66; president of Young Democrats of Hillsborough County 1966-1967; Florida Energy Committee; Resource Recovery and Management Advisory Council; Intergovernmental Relations Committee of the National Legislative Conference; Council of State Governments, Southern Regional Committee on Environmental Quality; Multistate Tax Compact Advisory Committee; delegate to 1968 Democratic National Convention; member of Environmental Land Management and Study Committee **church** Catholic **recreation** hunting, fishing and flying **historical** William Norona, grandfather, was Justice of the Peace; Joseph G. Spicola, Sr., father, was County Solicitor and Justice of the Peace; Joseph G. Spicola, Jr., brother, was Public Defender from 1961 until 1968 and was State Attorney **highlights** Outstanding Conservationist Award from Tampa Audubon Society, 1971; Outstanding Service to Our Community award from WDAE radio, 1971; Distinguished Service to Education award from Phi Delta Kappa, 1971; Legislator of the Week award in 1971 and 1972 from Capitol Press Corps; Outstanding Environmentalist award from Florida Sierra Club, 1974; Tiger Award for Outstanding Contribution to Education from Teachers in Government and Education Reform, 1975; Good Government Award for Outstanding Contribution to Community from Tampa Jaycees, 1975 **address** 806 E. Jackson St., Tampa 33602 **telephones** (business) 813 272-6702 (residence) 813 920-3649.



JON C. THOMAS
Democrat, District 30

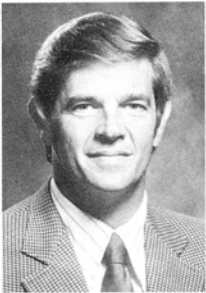
Vice President of Baird-Case Funeral Homes, Inc. **b.** January 22, 1939 in Uniontown, Pa. Moved to Florida in 1956 **e.** Pittsburgh Institute of Mortuary Science, 1963; president of graduating class **m.** Patsy Holloway of Jacksonville **c.** Hollee, Jon Charles II and Timothy James **affiliations** past president of Lauderdale-by-the-Sea Lions Club; Christian Business Men's Committee; Broward Blood Bank Board of Directors; Doric Lodge F.A.M., Keystone Chapter and Lauderdale Council of Royal Arch Masons; ambassador of Mahi Temple of Miami; Fort Lauderdale and Deerfield Beach Shrine Clubs; Coral Ridge Yacht Club; Broward County Community Mental Health Board; United Way; Lauderdale Lakes Rotary;

Tower Forum **legislative service** elected to House of Representatives in 1970, reelected in 1972; elected to Senate in 1974 **other public service** chairman of Governmental Efficiency Study Commission in Broward County, 1969-70 **church** Presbyterian **military service** U.S. Army **highlights** Young Man of the Year in Fort Lauderdale, 1965; Legislator of the Year, 1973, Florida Association for Retarded Children; "Senator of the Year," 1976, Florida Association for Retarded Children; "Conservation Legislator of the Year," 1976, Florida Wildlife Federation **recreation** fishing, hunting and tennis **address** P.O. Box 11148, Fort Lauderdale 33306 **telephone** 305 772-0750.



PAT THOMAS
Democrat, District 4

Owner of general insurance agency, mortgage broker **b.** November 21, 1933 in Quincy **e.** University of Florida, B.S.A., 1957; Florida Blue Key; president of Alpha Gamma Rho fraternity; president of Senior Class **m.** Mary Ann Jolley of Naples **c.** Anne Jolley and John Pat **affiliations** Mason; Rotary Club; Shrine; Chamber of Commerce; Gadsden County Association of Insurance Agents; National Association of Insurance Agents; American Legion; Elks; Florida Farm Bureau **legislative service** elected to House of Representatives in 1972; elected to Senate in 1974 **other public service** state chairman of Democratic Executive Committee of Florida, 1966-70; chairman of Florida Delegation to Democratic National Convention, 1968; State Racing Commission, 1971 **church** Presbyterian **military service** U.S. Army, Korea **highlights** "Most Outstanding First-Term Member," 1976 (Allen Morris Award); named "One of Florida's Five Outstanding Young Men," 1967; National Junior Chamber of Commerce nominee as "Outstanding Young Man of America," 1967; Legion of Honor Recipient; Order of DeMolay **recreation** hunting, boating and fishing **addresses** (mailing) Room 330, Senate Office Building, Tallahassee 32304 (residence) Highway 90 West, Quincy 32351 **telephones** (district) 904 488-4021 (business) 904 627-7151 (residence) 904 627-7265.



THOMAS J. "Tom" TOBIASSEN
Republican, District 2

Mechanical engineer **b.** November 21, 1931 in Omaha, Neb. Moved to Florida in 1961 **e.** Ohio State University, B.M.E., 1959; graduate study at University of Florida extension; Sigma Chi; varsity baseball **c.** Tommy J., Jr. and Todd J. **affiliations** registered professional engineer in Florida; past president of MERA; Pensacola Art center; Pensacola Heritage Foundation; Pensacola Chamber of Commerce; den leader for Webelos Scouts; Pensacola Little Theatre; Varsity "O" of Ohio State University; Pensacola Symphony; vice president of Escambia Bay Boys Club; Northwest Florida Environmental Health Task Force; Navy League; Northwest Florida Sportfishing Association; Veterans of Foreign Wars Post 706; American Legion Post 33; state director and vice president of Cystic Fibrosis; advisory committee on child abuse; Northwest Florida Bowhunters; Pensacola Runners Association; Northwest Florida Track Club **legislative service** elected to House of Representatives in 1968, reelected in 1970 and 1972; elected to Senate in 1974 **church** Lutheran **highlights** runner-up for "Most Outstanding First-Term Member," 1976 (Allen Morris Award) **military service** U.S. Army, service in Japan and Korea **recreation** golf, hunting, sailing, all sports and stamp collecting **address** P.O. Box 2356, Pensacola 32503 **telephones** (business) 904 433-0577 (residence) 904 433-8942.



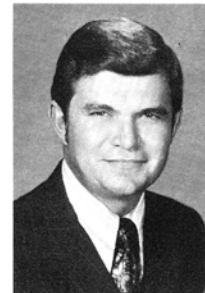
ALAN TRASK
Democrat, District 13

Citrus, cattle and coal **b.** June 26, 1933 in Bartow **e.** University of Florida; Florida Southern College; Kappa Alpha **m.** Janet K. Colee of Orlando **c.** Bill, Jane, Don and Ken Trask; Pam, Chris and Paul Colee **affiliations** Florida Citrus Mutual; advisory Board of Southland Equity Corporation; honorary director and past president of Polk County Farm Bureau; past director of Florida Farm Bureau Federation; past president of Fort Meade Lions Club; executive board of Gulf Ridge Council for Boy Scouts of America; past director of Property Owners League; Polk Heart Fund Association; director of WEDU educational television **legislative service** elected to Senate in 1968, reelected subsequently; President Pro Tempore of Senate, 1975-76 **other public service** Polk County Commission, 1963-68, chairman in 1965 and 1967; secretary-treasurer of State Association of County Commissioners; Polk County Committeeman for Farmers Home Administration; member of Gov. Farris Bryant's Citrus Advisory Committee **church** Assembly of God **highlights** "One of America's Outstanding Young Men," Junior Chamber of Commerce award, 1965; "Polk County's Outstanding Young Farmer," Junior Chamber of Commerce award, 1957 and 1958 **recreation** hunting and fishing **address** P.O. Box 823, Fort Meade 33841 **telephones** (business) 813 285-9170 (residence) 813 285-8595.



JOHN W. VOGT
Democrat, District 17

Registered professional engineer in Florida, New York and Maryland **b.** December 28, 1936 in Lake Wales **e.** University of Florida, B.C.E., 1961; graduate work at University of South Florida and Rutgers University; president, Alpha Tau Omega, 1960 **m.** Tonie Fernandez of Miami **c.** D'Anna, Suzanne, Leeanne and Lisa **affiliations** Chamber of Commerce; Florida Audubon Society; Brevard American Red Cross; Big Brothers; Florida Engineering Society; March of Dimes; Boy Scouts of America Advisory Council; Brevard Multiple Sclerosis Campaign Chairman; Cocoa Kiwanis; Missile Space and Range Pioneers, Inc.; Mental Health Association; Florida Injured Wildlife Sanctuary, Inc. **legislative service** elected to Senate in 1972, reelected in 1976 **other public service** advisory board of Brevard Association of Children with Learning Disabilities; president of Young Democrats, 1971; president of Central Brevard Democratic Men's Club, 1972; engineering advisory councils of University of Florida and Florida Technological University; technical advisory committee, Florida Solar Energy Center; visiting committee, Department of Environmental Engineering Sciences, University of Florida; Community Instructional Services advisory board, Seminole Community College **church Baptist highlights** Legislative Service Award from Florida Association of Community Colleges, 1976; Environmental Award from Florida Chapter of the Acoustical Society of America, 1976; Florida Federation of Humane Societies Humanitarian Award, 1976; Florida Association for Retarded Citizens "Senator of the Year," 1975; Pensacola Journal "Outstanding Freshman Senator," 1973; Outstanding Florida Young Democrat, 1973; Jaycees "Good Government Award," 1973-74; Engineer of the Year, 1973; chairman of Brevard County legislative delegation, 1975-76; chairman of Osceola County legislative delegation, 1972-76; chairman of Seminole County legislative delegation, 1974-76 **recreation** tennis and handball **historical** Dr. Daniel A. Vogt, great-great uncle, of Ocala, was a member of Florida House of Representatives from Marion County, 1856-1861; Albertus Vogt, grandfather, discovered phosphate near Dunnellon in 1880s; old family residence still in existence at Vogt Springs near Dunnellon **addresses** (business) 1980 N. Atlantic Ave., Suite 916, Cocoa Beach 32931 (residence) 205 Rose Drive, Cocoa Beach 32931 **telephones** (business) 305 783-9618 (residence) 305 784-1345.



JOHN T. WARE
Republican, District 18

Attorney **b.** November 14, 1931 in Chattanooga, Tenn. **e.** St. Leo College Preparatory; University of Florida; Florida State University, B.S., 1957 (Government Administration); Stetson College of Law, Juris Doctor, 1961; American Jurisprudence Award in Municipal Government Law, 1961; president of Lambda Chi Alpha and president of Interfraternity Council of FSU; Delta Theta Phi **m.** Doris E. Gregory of Lake Worth **c.** G. Scott, Stacey E., Sheryl M., Sheila M. and Steve E. **affiliations** Florida and St. Petersburg Bar Associations; Florida Trial Lawyers Association; past vice president of St. Petersburg Chamber of Commerce; Committee of 100 **legislative service** elected to House of Representatives in 1964, reelected in 1968; elected to Senate in 1970, reelected in 1972 and 1974; Republican co-floor leader for 1973-74; Minority Leader for 1975-76 **church** Catholic **military service** U.S. Navy, aviation, Korean service **recreation** flying, hunting and fishing **highlights** "Most Effective in Debate," 1974 (Allen Morris Award) **addresses** (business) 55 Fifth St. South, St. Petersburg 33701 (residence) 211 Sunset Drive North, St. Petersburg 33710 **telephones** (business) 813 898-6767 (residence) 813 343-6680.

**GEORGE A. WILLIAMSON****Republican, District 29**

Attorney and real estate management **b.** July 11, 1938 in Chattanooga, Tenn. **e.** Duke University; University of Miami; University of North Carolina, LL.B., 1965 **m.** Andrea Tyler of Fort Lauderdale **c.** George Christian **affiliations** Fort Lauderdale Chamber of Commerce; Antique Automobile Club of America; Broward County, Florida and American Bar Associations; American Contract Bridge League **legislative service** elected to House of Representatives in 1970, reelected in 1972 and 1974; elected to Senate in 1976 **church** Presbyterian **recreation** golf and tennis **addresses** (business) 1111 S.E. Third Ave., Fort Lauderdale 33316 (residence) 216 Rose Drive, Fort Lauderdale 33316 **telephones** (business) 305 522-2585

(residence) 305 524-3016.

**LORI WILSON****Independent, District 16**

b. February 15, 1937 in Waynesville, N.C. (part Cherokee) Adopted Florida in 1960 **e.** Tennessee Tech; Rollins College; Brevard Community College; honors student; majors in business administration, government and fine arts **m.** Allen H. Neuharth **c.** Dan Neuharth, Jan Neuharth, Rhonda Wilson and Kim Wilson **affiliations** director of University of Florida Foundation; founding director of University of Florida Learned Scholars Institute; Business and Professional Women's Club; League of Women Voters; National and State Federation of Women's Clubs; charter member of Merritt Island Women's Club; Hacienda Girls Ranch; National Order of Women Legislators; Florida Historical Society; honorary director of

Central Florida Zoological Society; legislative director of Florida Injured Wildlife Sanctuary; Indian River Audubon Society; Save Our Waterways; Ballet Guild of Sanford-Seminole; 16th District Chamber of Commerce organizations; Missile, Space and Range Pioneers, Inc.; Pine Crest School Board of Advisors **legislative service** elected to Senate in 1972, reelected in 1974; first and only Independent Florida senator **other public service** appointed by Governor in March, 1969 to Brevard County Commission, elected to full term in 1970, elected chairman in 1972; member of President's State and Local Government Advisory Committee on OEO, 1971-72; member of National Association of County Officials Platform Committee for 1972 National Convention; State Local Government Commission, 1972-74; State Human Relations Commission, 1972-present; State Bicentennial Commission, 1972-present; Florida Space Shuttle Committee, 1970; State Association of County Commissioners Board of Directors, 1970; National Association of County Officials Environmental Steering Committee, 1971-72; State Child Day Care Advisory Committee, 1970-71; District 12 Mental Health Board of Directors, 1970-72; Florida Delegate to National Order of Women Legislators and National Legislative Conference **church** Protestant **highlights** appointed to Brevard County Commission in 1969, becoming first woman to receive significant gubernatorial appointment; first woman county commissioner in Brevard County; first woman county commission chairman in Florida; elected in 1972 as first Independent legislator in Florida, and as first Independent elected to major office in the state; reelected in 1974 with nearly 60 percent of the vote in a three-way race, Who's Who in American Politics; Who's Who in Politics in the South and Southwest; Who's Who in Florida; Merritt Island Jaycees Good Government Award, 1970, Sanford Jaycees Good Government Award, 1973; Florida Jaycees Statewide Good Government Award, 1974 (first woman so honored); Outstanding Floridian, 1971; Distinguished Citizenship Award and Outstanding Humanitarian Award from Cocoa Beach Elks; VFW award for Service to Veterans and Citizens of Florida; Spaceport Area Christmas Seal Chairman, 1972; honorable mention as Outstanding Freshman Senator; Meritorious Service Award, NAACP Tri-State Adoption Project, 1976; prominent personality, Florida League of Cities, 1976; Florida Women's Political Caucus Award for Outstanding Contributions to the Status of Women, 1976; Amita National Golden Lady Award for Outstanding Government Service, 1976 **addresses** (mailing) Apollo Building, 333 N. Atlantic Ave., Cocoa Beach 32931 (residence) Pumpkin Center, 333 S. Atlantic Ave., Cocoa Beach 32931 **telephones** (business) 305 783-5674 (residence) 305 783-1972.

**SHERMAN S. WINN****Democrat, District 34****President Pro Tempore**

Executive with The Balmoral **b.** February 18, 1923 in New York, N.Y. Moved to Florida in 1956 **e.** Brooklyn College **m.** Roslyn Workman of Mt. Vernon, N.Y. **c.** Stephen, Susan, Patti Lee and Jacqueline **affiliations** advisory boards for Florida State University and Florida International University; past president of Bal Harbour Resort Association; Board of Trustees for North Dade Children's Center; Board of Directors of Greater Miami Restaurant Association; American Legion; Elks; Moose; F.O.P.; Disabled American Veterans **legislative service** elected to House of Representatives in 1970; elected to Senate in 1972, reelected

in 1974 **other public service** mayor of North Miami, 1965-69 **church** Jewish **military service** U.S. Army, World War II **highlights** recipient of House-Senate concurrent resolution denoting outstanding service to higher education in Florida; Florida State University's First Distinguished Service Award; Chamber of Commerce Good Government Award; Central Baptist Church of Miami Award for Contribution Toward Brotherhood in Community; United Cerebral Palsy Humanitarian Service Award; contribution to FSU Scholarship Program; "Outstanding Man of the Year of Dade County," 1972 **recreation** golf and fishing **addresses** (business) 9801 Collins Ave., Bal Harbour 33154 (district) 111 N.W. 183rd St., Suite 402, Miami 33169 **telephones** (district) 305 651-4040 (business) 305 866-7792 (residence) 305 652-9166.

**WILLIAM G. "BILL" ZINKIL, Sr.****Democrat, District 32**

President of Zinkil Roofing Co. **b.** April 14, 1919 in Chicago, Ill. Moved to Florida in 1925 **e.** California Polytechnical College and University of California **m.** Carolyn F. Fischer of Hollywood **c.** William, Jr., James and Charles **affiliations** director of The Dania Bank; Elks Lodge No. 1732; Moose Lodge No. 919; American Legion Post No. 92; Veterans of Foreign Wars Post No. 2500; Pioneer Club of Hollywood; Boy Scouts of America (40-year veteran and Silver Beaver); Knights of Columbus and Holy Name Society; Hollywood Historical Society; A.A.R.P. **legislative service** elected to House of Representatives in 1970; elected to Senate in 1972, reelected in 1974 **other public service** mayor-commissioner of Hollywood, 1955-67; Tax

Assessor of Broward County 1967-69, member of State Tax Reform Commission, 1965-67; past president of Broward County League of Cities; past president of Florida League of Cities; former director of National League of Cities **church** Catholic **military service** Combat Engineers, European Theatre, World War II **recreation** bowling **addresses** (district) 225 N. 21st Ave., Hollywood 33020 (business) 2114 Johnson St., Hollywood 33020 (residence) 2814 Madison St., Hollywood 33020 **telephones** (district) 305 920-1711 (business) 305 920-3008.

Elected non-member officers



JOE BROWN
Secretary of the Senate

b. July 15, 1932 in Columbus, Ga. Moved to Florida in 1932 **e.** University of Florida, B.S.J., 1958 and graduate studies; Florida State University, 1972-73; Florida Agricultural and Mechanical University, 1973; student publications; student government; SDX: AGR **m.** Terrell Taft of Winter Park **c.** Joe, Charles and Julie **affiliations** past officer in American Legion, Elks, Sigma Delta Chi, Jaycees, Kiwanis, Boy Scouts and University of Florida Alumni Association **other public service** Hotel and Restaurant Commissioner, 1969; Deputy Beverage Director, 1967-68; State Tourist Director, 1967; executive assistant to Commissioner of Agriculture, 1961-67; UF faculty, 1960-61 **church** Methodist **military service** U.S. Air Force,

1950-53, Korea **recreation** hunting, fishing, camping and golf **highlights** Staff Director of Senate Government Operations Committee, 1971-72; Director of Management and Staff of the Senate, 1973-74; elected Secretary of the Senate on April 2, 1974, reelected subsequently **address** The Capitol, Tallahassee 32304 **telephone** 904 488-1621.



JOHN D. MELTON
Senate Sergeant at Arms

b. August 23, 1917 in Henderson, Ky. Moved to Florida in 1945 **e.** Baxter Seminary, Baxter, Tenn. **m.** Alice Winchester of Tallahassee **c.** Dwight, Gene, Phil and John, Jr. **affiliations** past president, past director, past chairman of President's Advisory Committee, Tallahassee Kiwanis Club; Shrine, 32nd degree Scottish Rite Mason, Ambassador to Morocco Temple, Riverside Lodge F&AM #266, Tallahassee Shrine Club; Tallahassee Elks Lodge 937; regional chairman of National Legislative Services and Security Association of National Legislative Conference; honorary member of New York City Police Department **church** Baptist **recreation** fishing and reading **highlights** thirteen years as administrative assistant to the sheriff of Leon County; two years as executive assistant to the Senate Judiciary Committee; one year as executive assistant to the Sergeant at Arms; appointed acting Sergeant at Arms on November 1, 1971; elected Sergeant at Arms on December 7, 1971, reelected subsequently **address** The Capitol, Tallahassee 32304 **telephone** 904 488-1383.

Senate table of organization

SENATE MEMBERSHIP

<p>President's office</p> <p>President</p> <p>The President is the chief executive officer of the Senate and presides over all sessions. He appoints chairpersons and members to committees, refers legislation to committees, interprets rules, preserves order and decorum and signs all acts and joint resolutions passed by the Legislature. The President's office is responsible for the administration of the affairs of the Senate, including committee coordination and preparation of the Senate budget.</p>
<p>President Pro Tempore's office</p> <p>President Pro Tempore</p> <p>The President Pro Tempore administers the office of the President Pro Tempore and upon the death, disability or other absence of the President shall assume the duties of the chair.</p>
<p>Minority office</p> <p>Minority leader</p> <p>The minority leader coordinates minority affairs and administers the office of the minority leader. He maintains liaison with the Senate leadership and assists in preparation of the special order calendar during sessions.</p>
<p>Secretary of the Senate's office</p> <p>Secretary of the Senate</p> <p>The Secretary of the Senate is responsible for the maintenance and security of all Senate records, and authenticates each act and joint resolution passed by the Senate. The Secretary also publishes the Senate journal and calendar. The Secretary supervises Senate Legislative Services (bill drafting and preparation, and legal research) and all printing, receives and identifies legislation, and registers lobbyists.</p>
<p>Sergeant at Arms' office</p> <p>Sergeant at Arms</p> <p>The Sergeant at Arms maintains order in the chamber, in the gallery, and in committee rooms. He is in charge of property acquisition and is responsible for the maintenance of all Senate property. The Sergeant also dispenses supplies and executes the commands of the President and of the Senate.</p>
<p>Rules and Calendar Committee</p> <p>The Rules and Calendar Committee sets meeting schedules for the Senate and submits the special order calendar during sessions. This committee serves as a committee for substantive bill consideration; it issues advisory opinions and makes recommendations to the Senate. Any changes in the Senate rules must be approved by this committee.</p>

Senate committees

AGRICULTURE

Senator Trask, chairman
Senator Skinner, vice chairman
Senators Peterson, Renick,
Scott, Pat Thomas, and Tobiassen

Amos Sumner, staff director
Room 44, Senate Office Building
488-2156

APPROPRIATIONS

Senator Lewis, chairman
Senator Gordon, vice chairman

Sub A: Senator W. D. Childers, chairman
Senators Poston, Scarborough,
Scott, Pat Thomas, and Trask

Sub B: Senator Peterson, chairman
Senators Hair, Skinner, Spicola,
and Tobiassen

Sub C: Senator Plante, chairman
Senators Dunn, McClain, Myers,
Jon Thomas, and Vogt

Hubert Helton, staff director
Room 418, Senate Office Building
488-5636

COMMERCE

Senator W. D. Childers, chairman
Senator MacKay, vice chairman
Senators Barron, Gallen, Henderson,
Plante, Jon Thomas, Ware, and Winn

Fred Martin, staff director
Room 410, Senate Office Building
488-3746

CORRECTIONS, PROBATION AND PAROLE

Senator Pat Thomas, chairman
Senator Renick, vice chairman
Senators Chamberlin, Graham,
and Scott

Ray Wilson, staff director
Room 103, Senate Office Building
487-1597

ECONOMIC, COMMUNITY AND CONSUMER AFFAIRS

Senator Vogt, chairman
Senator Firestone, vice chairman
Senators Castor, Gorman, and Hair

Ronnie Thomas, staff director
Room 432, Senate Office Building
487-1706

EDUCATION

Senator Peterson, chairman
Senator Ware, vice chairman
Senators Castor, Gordon, Lewis,
MacKay, Plante, Tobiassen, and Vogt

Herman Myers, staff director
Room 38, Senate Office Building
488-7609

EXECUTIVE BUSINESS

Senator Poston, chairman
Senator Don Childers, vice chairman
Senators Glisson, Saylor, Skinner,
and Wilson

O. T. Richards, staff director
Room 104, Senate Office Building
487-1476

FINANCE, TAXATION & CLAIMS

Senator Gordon, chairman
Senator Lewis, vice chairman
Senators Chamberlin, W.D. Childers,
Glisson, Graham, Holloway, MacKay,
Peterson, Plante, Saylor, Spicola,
and Zinkil

Jim Zingale, staff director
Room 426, Senate Office Building
487-2865

GOVERNMENTAL OPERATIONS

Senator Barron, chairman
Senator Zinkil, vice chairman
Senators Castor, Dunn, Firestone, Gallen,
Gorman, Henderson, Tobiassen, Wilson,
and Winn

Jack Overstreet, staff director
Room 404, Senate Office Building
488-7833

HEALTH & REHABILITATIVE SERVICES

Senator Jon Thomas, chairman
Senator Don Childers, vice chairman
Senators Glisson, Gordon, McClain,
Myers, and Vogt

Larry Carnes, staff director
400 Senate Office Building
488-6348

JUDICIARY-CIVIL

Senator Hair, chairman
Senator Wilson, vice chairman
Senators Chamberlin, Firestone,
Johnston, McClain, and Scott

Sylvia Alberdi, staff director
Room 27, Senate Office Building
488-3070

JUDICIARY-CRIMINAL

Senator Dunn, chairman
Senator Holloway, vice chairman
Senators Johnston, McClain, and
Williamson

Bill Bilenky, staff director
Room 215, Senate Office Building
488-1501

NATURAL RESOURCES & CONSERVATION

Senator Spicola, chairman
Senator Renick, vice chairman
Senators Don Childers, Henderson,
Skinner, and Trask

Jim Lewis, staff director
Room 414, Senate Office Building
488-1710

PERSONNEL, RETIREMENT & COLLECTIVE BARGAINING

Senator Scarborough, chairman
Senator Johnston, vice chairman
Senators Graham, Saylor, and
Williamson

John A. Smith, staff director
Room 430, Senate Office Building
487-1256

RULES & CALENDAR

Senator Gallen, chairman
Senator Plante, vice chairman
Senators Barron, W.D. Childers,
Gordon, Henderson, Lewis, Myers,
Scarborough, Spicola, Trask, Ware, and Winn

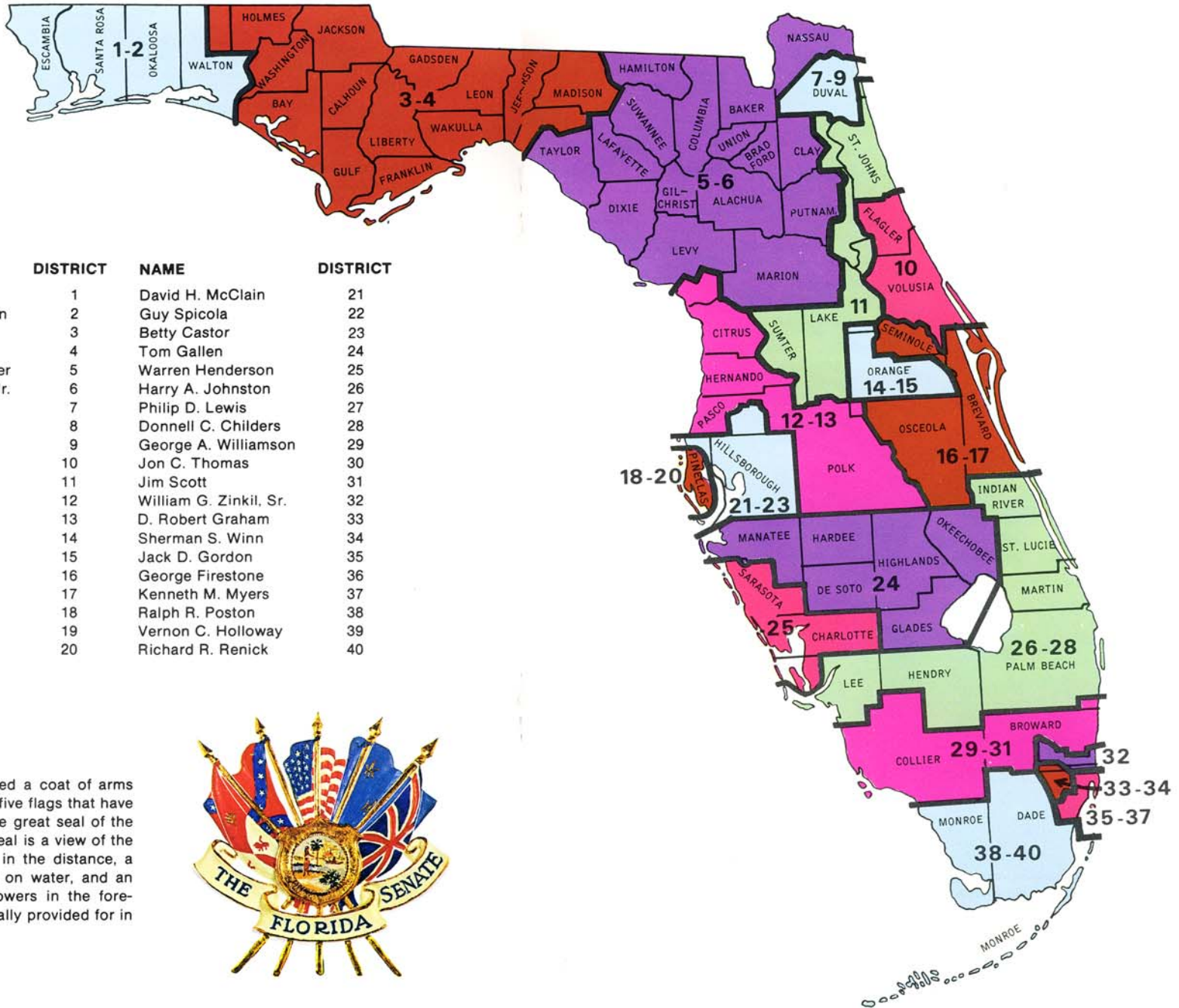
Sandi Walters, staff director
Room 19 Executive Suite, Capitol
488-5810

TRANSPORTATION

Senator Myers, chairman
Senator Gallen, vice chairman
Senators Gorman, Holloway, Poston,
Scarborough, Pat Thomas, and Williamson

John Christensen, staff director
Room 30, Senate Office Building
488-6519

The Florida Senate 1976-1978

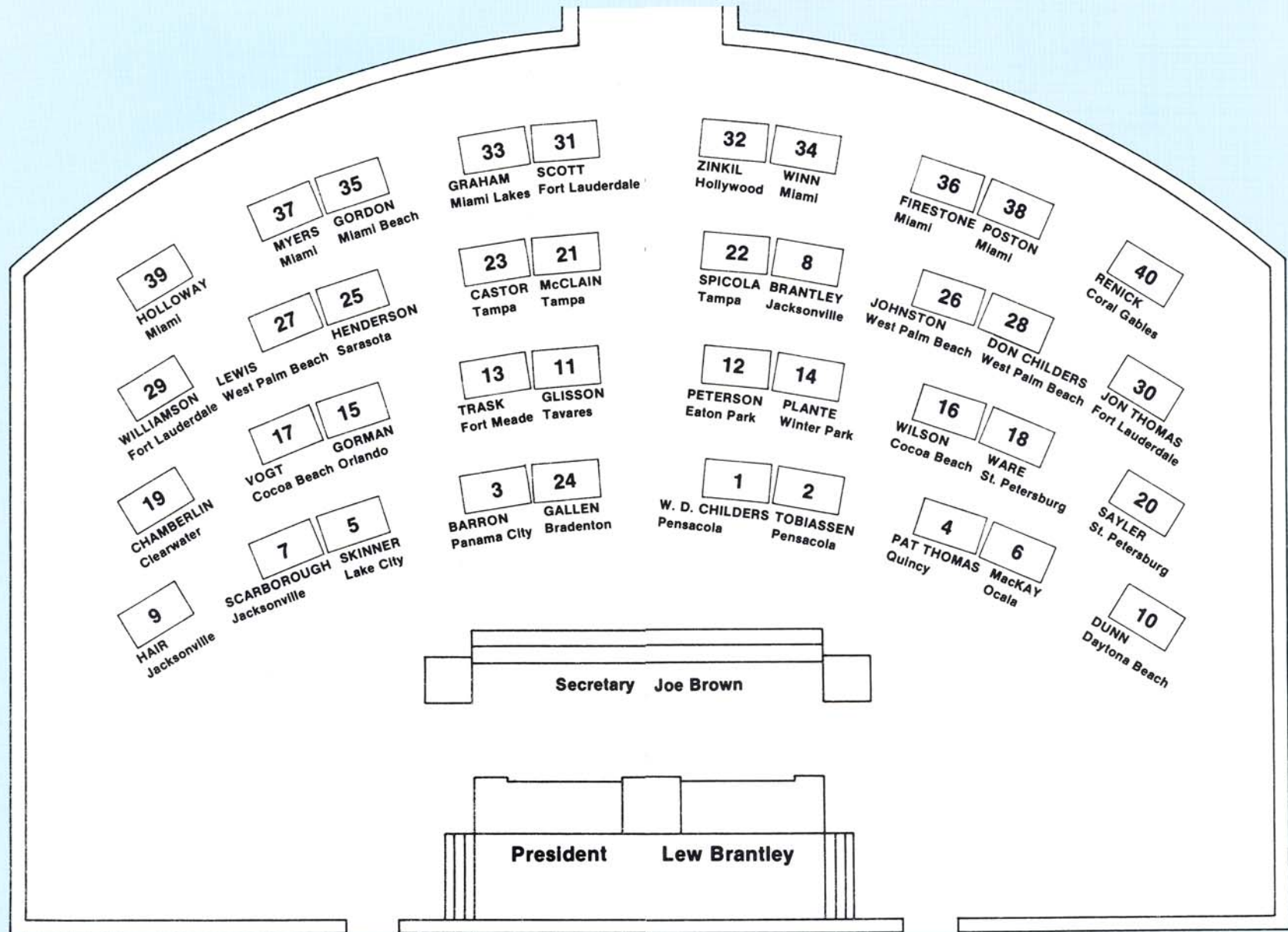


NAME	DISTRICT	NAME	DISTRICT
W. D. Childers	1	David H. McClain	21
Thomas J. Tobiassen	2	Guy Spicola	22
Dempsey J. Barron	3	Betty Castor	23
Pat Thomas	4	Tom Gallen	24
Sherrill "Pete" Skinner	5	Warren Henderson	25
Kenneth H. MacKay, Jr.	6	Harry A. Johnston	26
Dan Scarborough	7	Philip D. Lewis	27
Lew Brantley	8	Donnell C. Childers	28
Mattox Hair	9	George A. Williamson	29
Edgar M. Dunn, Jr	10	Jon C. Thomas	30
Jim Glisson	11	Jim Scott	31
Curtis Peterson	12	William G. Zinkil, Sr.	32
Alan Trask	13	D. Robert Graham	33
Kenneth A. Plante	14	Sherman S. Winn	34
Bill Gorman	15	Jack D. Gordon	35
Lori Wilson	16	George Firestone	36
John W. Vogt	17	Kenneth M. Myers	37
John T. Ware	18	Ralph R. Poston	38
Don Chamberlin	19	Vernon C. Holloway	39
Henry Saylor	20	Richard R. Renick	40

Senate coat of arms

The 1972 Senate adopted a coat of arms which contains a fan of the five flags that have flown over Florida above the great seal of the State. In the center of the seal is a view of the sun's rays over a highland, a coconut palm, a steamboat on water, and an Indian female scattering flowers in the foreground. The seal was originally provided for in the Constitution of 1868.





Presidents of the Senate

Session	Name	Session	Name
1839-40	John Warren	1919	James E. Calkins
1841	William P. Duval	1921	William A. MacWilliams
1842	William H. Brockenbrough	1923	Theo. T. Turnbull
1843-44	George Walker	1925	John S. Taylor
1845	James A. Berthelot	1925, Ext. Sess.	John S. Taylor
1845, Adj. Sess.	James A. Berthelot	1927	Samuel W. Anderson
1846	Dennitt H. Mays	1929	Jesse J. Parrish
1847	Daniel G. McLean	1929, Ext. Sess.	Jesse J. Parrish
1848	Erasmus D. Tracy	1931	Patrick C. Whitaker
1850	Robert J. Floyd	1931, Je. Ext. Sess.	Patrick C. Whitaker
1852	Robert J. Floyd	1931, Jy. Ext. Sess.	Patrick C. Whitaker
1854	Hamlin V. Snell	1933	Truman G. Futch
1855, Adj. Sess.	Hamlin V. Snell	1935	William C. Hodges
1856	Philip Dell	1937	D. Stuart Gillis
1858	John Finlayson	1939	J. Turner Butler
1859, Adj. Sess.	John Finlayson	1941	John R. Beacham
1860	Thomas Jefferson Eppes	1943	Philip D. Beall
1861	Thomas Jefferson Eppes	1945	Walter W. Rose
1862	Enoch J. Vann	1945, Ext. Sess.	Walter W. Rose
1863	Enock J. Vann	1947	S. Dilworth Clarke
1864	Abraham K. Allison	1948, Ext. Sess.	S. Dilworth Clarke
	From 1865 through 1887 the Lt. Governor served.	1949	Newman C. Brackin
		1949, Ext. Sess.	Newman C. Brackin
1889, Ext. Sess.	Patrick Houstoun	1951	Wallace E. Sturgis
1889	Joseph B. Wall	1953	Charley E. Johns
1891	Jefferson B. Browne	1955	W. Turner Davis
1893	William H. Reynolds	1955, Ext. Sess.	W. Turner Davis
1895	Frederick T. Myers	1956, Ext. Sess.	W. Turner Davis
1897	Charles J. Perrenot	1957	William A. Shands
1899	Frank Adams	1957, Ext. Sess.	William A. Shands
1901	Thomas Palmer	1959	Dewey M. Johnson
1903	Frank Adams	1961	W. Randolph Hodges
1905	Park M. Trammell	1962-63	F. Wilson Carraway
1907	William H. Harris	1965	James E. Connor
1909	Frank M. Hudson	1967	Verle A. Pope
1911	Frederick P. Cone	1969-70	John E. Mathews, Jr.
1912, Spec. Sess.	Frederick P. Cone	1971-72	Jerry Thomas
1913	Herbert J. Drane	1973-74	Mallory E. Horne
1915	Charles E. Davis	1974*	Louis de la Parte
1917	John B. Johnson	1975-76	Dempsey J. Barron
1918, Ext. Sess.	John B. Johnson	1977-78	Lew Brantley

*Served as president from July 1, 1974 to Nov. 6, 1974 on resignation of President Horne.

House of Representatives

MEMBER	DISTRICT	MEMBER	DISTRICT
Grover C. Robinson III	1	Dorothy Sample	61
Tom Patterson	2	James L. Redman	62
Clyde H. Hagler	3	John L. Ryals	63
Edmond M. Fortune	4	R. Ed Blackburn, Jr.	64
Jerry G. Melvin	5	James S. Foster	65
James G. Ward	6	H. Lee Moffitt	66
Wayne Mixson	7	Pat Frank	67
Earl Hutto	8	Richard S. Hodes	68
William J. Rish	9	George H. Sheldon	69
James Harold Thompson	10	Helen Gordon Davis	70
Donald L. Tucker	11	Ralph H. Haben	71
Herb Morgan	12	Patrick K. Neal	72
Wayne Hollingsworth	13	Thomas E. Danson, Jr.	73
Gene Hodges	14	Ted Ewing	74
George R. Grosse	15	Frederic H. Burrall	75
Arnett E. Girardeau	16	K. Dale Cassens	76
John R. Forbes	17	William J. Taylor	77
John W. Lewis	18	Donald Francis Hazelton	78
Eric B. Smith	19	Reid Moore, Jr.	79
Carl Ogden	20	Bill James	80
Tommy Hazouri	21	Edward J. Healey	81
Steve Pajcic	22	John J. Considine III	82
R. Earl Dixon	23	Tom Lewis	83
Ander Crenshaw	24	Van B. Poole	84
Frank Williams	25	Terry O'Malley	85
Disney Martin	26	Linda Cox	86
Bill Andrews	27	Stephen James Warner	87
A.H. "Gus" Craig	28	Tom Gustafson	88
William R. Conway	29	Mary Ellen Hawkins	89
Samuel P. Bell III	30	Franklin B. Mann	90
J. Hyatt Brown	31	Hugh Paul Nuckolls	91
Wayne C. McCall	32	Tom McPherson	92
Bob Hattaway	33	Harold J. Dyer	93
Vince Fechtel, Jr.	34	John Adams	94
Richard H. Langley	35	Walter C. Young	95
John R. Culbreath	36	Charles W. Boyd	96
Ronald R. Richmond	37	David J. Lehman	97
Lawrence R. Kirkwood	38	Elaine Gordon	98
John L. Mica	39	Barry Kutun	99
Bill Fulford	40	Elaine Bloom	100
Fran Carlton	41	Paul B. Steinberg	101
Toni Jennings	42	Gwen Margolis	102
Dick J. Batchelor	43	Alan S. Becker	103
David L. Barrett	44	William H. Lockward	104
Clark Maxwell, Jr.	45	Joe Lang Kershaw	105
Marilyn B. Evans	46	Gwendolyn S. Cherry	106
Bill Nelson	47	A.M. "Tony" Fontana	107
R. Cale Patchett	48	John A. Hill	108
Bob Crawford	49	Joe Gersten	109
Beverly B. Burnsed	50	Roberta Fox	110
Gene Ready	51	Tom Gallagher	111
C. Fred Jones	52	Barry Richard	112
Mary R. Grizzle	53	William E. Sadowski	113
S. Curtis Kiser	54	Robert C. Hector	114
Tom R. Moore	55	James F. Eckhart	115
Betty Easley	56	Bob McKnight	116
Dennis McDonald	57	Charles C. Papy, Jr.	117
George F. Hieber II	58	John Cyril Malloy	118
Don Poindexter	59	Hugo Black III	119
T.M. "Tom" Woodruff	60	Joe Allen	120

Three Branches of Government

America's tradition

Florida's constitution, in the traditional American pattern of "separation of powers," divides its governmental structure into three separate and independent branches.

The Legislative Branch has exclusive law-making power, and thus determines the general policies by which the problems of society are to be met. It may delegate limited rule-making power to some executive agencies.

The Executive Branch, with the Governor as its chief, administers the laws made by the Legislature. The Comptroller, Commissioner of Agriculture, Commissioner of Education, Attorney General, Treasurer-Insurance Commissioner, and Secretary of State, as the Cabinet, work with the Governor and share certain executive responsibilities.

The Judicial Branch interprets the laws when their meaning is in doubt and determines their constitutionality when it is questioned. The Judiciary also presides over trials involving disputes between persons, and between the state and persons. Certain limited administrative disputes may be decided by executive agencies when so authorized by law.

This structural division, faithfully maintained, sets up a system of "checks and balances" by which no one branch can become all-powerful and impose a tyrannical government by rule of "men" as opposed to rule by "law."

The Legislative Branch

Composition, organization, and powers

Florida's Legislature is composed of two houses: the Senate and the House of Representatives. Each house is the sole judge of the qualification and election of its own members, and has the power to choose its own officers and to make its own rules of procedure. All sessions of each house are open to the public, except sessions of the Senate when appointments to or removals from public office are considered; these sessions may be closed. Either house of the Legislature may initiate legislation on any subject.

The state constitution as revised in 1968 provides that the Legislature shall be apportioned into not less than 30, nor more than 40, senatorial districts, and not less than 80, and not more than 120, representative districts. The Legislature met the mandate during the 1972 session when it established 40 senatorial districts and 120 House districts. Senators serve four-year terms, and representatives serve two-year terms.

Officers

The President of the Senate and the Speaker of the House preside over their respective houses. The President Pro Tempore and the Speaker Pro Tempore preside when the President or the Speaker is unable to serve or so requests. These presiding officers are elected by their respective bodies and serve for two-year terms. Each house also elects other constitutional officers, the Secretary of the Senate and the Clerk of the House, from outside its membership. They are

responsible, with other duties, for keeping clear and accurate records of the proceedings of each body. A Sergeant at Arms is elected by each house to assist the presiding officer in maintaining order and providing services. Each house also employs other personnel to provide necessary support services.

Election and qualifications

The constitution requires that members of the Legislature be elected at the general election in November of even-numbered years. Party candidates are nominated in party primary elections held prior to the general elections. A member of the Legislature must be at least 21 years of age, an elector and a resident of the district from which elected, and a Florida resident for two years prior to election. No person may serve as a member of the Legislature while holding a profitable office or appointment under the federal or state government.

Compensation

Legislators are paid \$12,000 annually. They, like other state and local government employees, are paid travel expenses when on official business and when in session. Each house also provides certain basic expense allowances for maintaining local district offices to better serve the citizens of the district.

Legislative sessions

Two weeks after each general election the Legislature convenes for the exclusive purpose of organization and election of officers.

Regular sessions of the Legislature begin on the first Tuesday after the first Monday in April and may not exceed 60 consecutive days. However, the convening date in even-numbered years may be set by law. Special sessions may be called by the Governor, or may be convened by joint proclamation of the President of the Senate and the Speaker of the House, as provided by law. Special sessions may not exceed 20 days. Sessions may be extended by three-fifths vote of each house. Each such "call" for a special session prescribes the business to be considered, and matters "outside the purview" of the call cannot be taken up unless two-thirds of the membership of each house consents. The Legislature may also be convened in extra session upon the affirmative vote of three-fifths of the members of both houses for all purposes as if convened in regular session, but such session is limited to 30 days. The President of the Senate may convene the Senate in special session for the consideration of executive suspensions, allowing the Senate to take up these matters at a time when the entire Legislature would not have to be in session and engaged in the general legislative process.

Rules

At every organization session, each house adopts its rules of procedure. There can be no orderly proceedings unless the rules are rigidly followed, so it is important that all legislators and interested citizens become familiar with the working provisions of the rules.

Committees

The traditional framework through which ideas and needs are converted into legislation is the committee system. The committee is the heart of the legislative

process, functioning to study, research, and plan the need for and impact of solutions to "people problems."

The Senate and House rules provide for certain standing committees, special or select committees, and subcommittees. The presiding officers are vested with the power to name the chairmen and members of all committees.

The formation of committees creates small groups of legislators who can give a bill closer study than would be possible in debate on the floor. Though each house, sitting as a Committee of the Whole, could consider in detail each proposed piece of legislation, smaller committees can perform more efficiently and thoroughly the work of providing the complex governmental services required by Florida's unprecedented rate of growth.

The committee system has been constantly strengthened by the employment of trained and expert staff personnel who work year-round to retain continuity in the research programs, experiences, and results of past sessions. Now the legislators, free from the mechanical and clerical tasks, can apply their time and energy to the problems involved.

Bills are assigned to one or more committees for study, and in this preliminary screening the committees may hold public hearings where committee members hear sponsoring legislators and others in the industry or profession, the governmental agency, or the general public, who may be affected by or interested in the bill. The committee then votes to recommend the bill favorably, unfavorably, or with amendments to be considered when the bill is debated on the floor.

When the Senate and House are unable to agree on the final content of a bill, it goes to a conference committee. This committee, composed of members of both houses, tries to resolve the differences between the Senate and House versions of a bill. The conference committee report must be approved by both houses.

Other committees commonly used are joint committees, which are composed of members from each house; interim committees, which meet between sessions; and select committees, which are usually appointed to make recommendations on special or unique problems.

The Joint Legislative Management Committee supervises services which can be shared by both houses, thereby affording better facilities at a reduced burden on the taxpayer. These joint services are under the management of a committee composed of three leaders from each house, and are divided into five areas. Library Services maintains a system of reference and research materials particularly related to legislative needs, including the work of other states and of federal and local government agencies. Legislative Information provides current information on all legislation for the public, for legislators, and for their staff. Statutory Revision prepares and prints each revision of the Florida Statutes. Administrative Services performs services such as personnel, payroll, purchasing, fiscal, and other administrative necessities. Systems and Data Processing maintains the Data Processing System of the Legislature.

The Legislative Auditing Committee is another joint Senate-House committee. The committee employs an Auditor General who audits state and county governmental agencies.

Lobbying

All persons, except members of the Legislature or their aides, who seek to influence legislation must register with the Secretary of the Senate or the Clerk of the House before engaging in such activity. Every registrant must also state any

direct business association or partnership with any current member of the Legislature. The definition of a lobbyist includes everyone who tries to influence legislators, except persons who, on an isolated basis and without intent to continue beyond a single legislative day, appear before a committee without receiving additional salary or compensation.

Journals and calendars

The Secretary of the Senate and the Clerk of the House, under the direction of each house, publish a journal and a calendar daily during the legislative session. The journal details the proceedings on the floor, and also includes committee reports and related actions. The calendar is a schedule of business to be taken up that day, including committee meetings for that and the following day and bills to be considered that day.

The journal and the calendar are given to the legislators each morning before the session convenes, and are available to other interested parties. The calendar is of special significance to persons interested in the progress of particular bills, since it lists the order of bills scheduled for floor action and committee consideration. Lobbyists are thus able to present their views to the legislators in a timely and orderly fashion.

The relative position of a bill on the calendar is called its "order," and the order may be determined either by the sequence in which the bills were returned to the floor from committee, by "special order" set by the Rules Committee, or by vote of either house.

Forms of legislation

Legislative proposals may be in the form of bills, resolutions, concurrent resolutions, joint resolutions, or memorials.

A bill is a proposed law, and it may be either a general bill or a local bill. A general bill would have a general impact within the state. A local bill would affect a particular county or town named in the bill. Prior to its introduction, a local bill must either be advertised in the area to be affected, or it must contain a provision to allow the voters in the area to accept or reject the measure if it is passed by the Legislature. A majority vote is required to pass a bill.

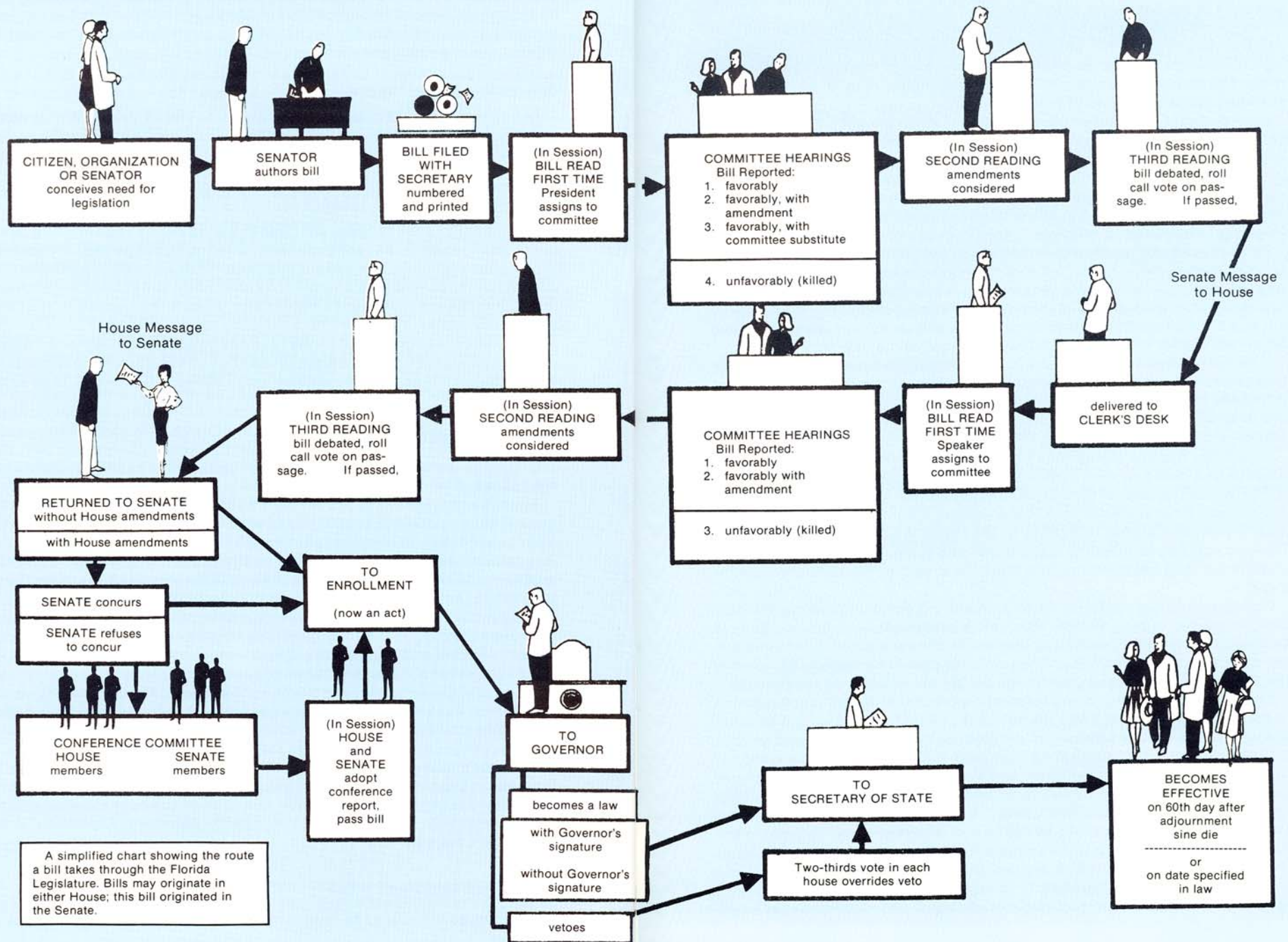
A resolution expresses the opinion or will of one house of the Legislature, whereas a concurrent resolution expresses the opinion or will of both houses. A joint resolution usually is a proposal to amend the state constitution, to apportion the Legislature, to set the effective date of a vetoed bill when the veto is overridden, or to recess for more than seventy-two hours. Resolutions, concurrent resolutions, and joint resolutions are passed by a majority vote, except that a three-fifths vote of the members of both houses is required to pass a joint resolution that proposes an amendment to the state constitution.

A memorial is a petition addressed to the President of the United States, the Congress, or some official agency of the federal government. It requests action or expresses the Legislature's collective viewpoint concerning a matter which is within the jurisdiction of the official or agency addressed. A memorial is also passed by a majority vote.

How a bill becomes a law

Bills may be introduced by one or more Senators or Representatives in their

How an idea . . . becomes a bill . . . becomes a law



respective houses. When a Senate bill has been prepared in proper form and checked for compliance with the constitution and the rules, it is delivered to the Secretary of the Senate for introduction and is given a number.

The constitution requires that each bill be read on three separate days, but provision is made to waive this rule by two-thirds vote of those present. Upon receiving a number, the bill reaches first reading, and is read by title only. The President refers it to the appropriate committees, and the original copy is delivered to the chairman of the committee of first reference.

Several copies must accompany the original when the bill is filed: a copy of each bill is routinely sent to the Clerk of the House; to the printer, where several hundred copies are printed for public information; and to the computer operators, where it is recorded with other legislative information.

The committees, following notice published in the calendar, meet in open session to hear debate on the bill, and vote to recommend it favorably or unfavorably to the entire Senate.

When the committee reports are received by the Secretary of the Senate, they are published in the journal. If the reports are favorable, the bill is placed on the calendar of bills available for second reading. It may then be read a second time, and is subject to amendment. If amended, the changes are incorporated into the bill, and it is then returned to the floor as a bill available for third reading. When a bill is read a third time, general debate is allowed and a final vote is taken.

If the bill receives a favorable vote, it is delivered by messenger to the House of Representatives, where the procedure is quite similar to that outlined here. When it receives final approval by both houses, in exactly the same form, the bill becomes an act. It is then enrolled as a part of the official records in the office of the Secretary of the Senate and is certified to the Governor for his action.

An act may become law with the written approval of the Governor, or after the passage of a time specified in the constitution it becomes law without his approval. Within the time set forth in the constitution, the bill is subject to the Governor's veto. If the Governor, as Chief Executive, disapproves of legislation, he must transmit his signed objections to the house in which the bill originated. The veto may be overridden by a two-thirds vote of the members of each house, and the act thus becomes law, the Governor's veto to the contrary notwithstanding.

Companion bills are often used as a timesaving device. These are identical bills, introduced in both houses, which allow simultaneous committee study in each body. If favorably reported by committee, the companion bills advance in the same manner as other bills. When a House-passed companion bill reaches the Senate, it can be substituted for the Senate bill which is on the calendar.

The appropriations bill is one of the most important bills in each regular session of the Legislature. This bill sets the amounts of state funds which will be made available to the various agencies of government during the next fiscal period.

Preparation of the appropriations bill is quite different from the preparation of other bills. Several months before the Legislature meets, the various agencies of government submit to the Governor, as chief budget officer of the state, their requests for funds. The Governor, with the assistance of the secretary of the Department of Administration, compiles and analyzes these requests. After public hearings, he submits to the Legislature his recommendations of the funds that should be made available to the agencies.

The Appropriations Committee is charged with reviewing the Governor's recommendations and with securing any additional information needed by the

Legislature, including public hearings and visits and conferences with the officials of the state institutions or agencies.

After the Legislature is in session, the committee recommends an appropriations bill. The bill takes the same course as other general bills, but it is difficult to get both houses to agree on all items in the bill, and a conference committee is usually appointed to resolve the differences.

Impeachments

The Governor, Lieutenant Governor, members of the cabinet, justices of the Supreme Court, and judges of the District Courts of Appeal and Circuit Courts may be removed from office only by impeachment. The House of Representatives has the sole power to impeach, that is, to bring charges. The Senate then tries all impeachments, and the Chief Justice of the Supreme Court, or another justice designated by him, presides at such trials, except in the trial of the Chief Justice, when the Governor is required to preside. A two-thirds vote of the House of Representatives is required to impeach, and a two-thirds vote of the Senate is required to convict. If convicted, the officer is thus removed from office. Officers may also be indicted, tried, and punished, according to law if the impeachable offense is a violation of the criminal law of Florida.

Enforcement of authority

Both houses of the Legislature have the power to compel witnesses to appear before the house or its committees. During a session of the Legislature, either house may punish by fine not exceeding \$1,000 or imprisonment not exceeding 90 days, or both, any nonmember who has been guilty of disorderly or contemptuous conduct in its presence, or who has refused to obey its lawful summons. By law, the Legislature may confer such powers on committees when the Legislature is not in session, but the punishment then must be by court proceedings. Each house may punish its own members for contempt or disorderly conduct, and may, by a two-thirds vote, expel a member.

The Executive Branch

The Florida constitution vests the supreme executive power of the state in the Governor, and provides that he shall ensure that the laws are faithfully executed. It provides for a Lieutenant Governor to be elected in a joint candidacy with the Governor. The constitution also provides that the Governor shall be assisted by a cabinet composed of an Attorney General, a Commissioner of Agriculture, a Commissioner of Education, a Comptroller, a Secretary of State, and a Treasurer-Insurance Commissioner.

The Governor, Lieutenant Governor, and members of the cabinet are elected to terms of four years. They take office on the first Tuesday after the first Monday in January following their election in November of non-presidential election years. The Governor may succeed himself in office unless he has served more than six years in two consecutive terms. Cabinet members are not limited in the number of terms they may serve. The salary of the Governor is \$50,000 per year, and the Lieutenant Governor and cabinet officers receive \$40,000 annually.

To be eligible for election to the office of Governor, Lieutenant Governor, or to a cabinet post, a candidate must be a qualified voter, not less than thirty years of age, and a resident of Florida for the preceding seven years. The Attorney General must also have been a member of The Florida Bar for the preceding five years.

The constitution requires that the functions of the executive branch be divided into not more than twenty-five departments, exclusive of the departments established in the constitution. Under the 1969 Reorganization Act, the Governor appoints the secretaries of seven departments, and appoints the members of boards that head three departments. These appointments are subject to confirmation by the Senate. The Governor and certain members of the cabinet form a board to head or supervise seven departments.

The Public Service Commission is composed of three members who are elected statewide.

Powers of the Governor and Lieutenant Governor

The Governor is given the power to appoint many state and county officers who are not chosen by popular election, and to fill many vacancies in elective office. In some cases, the Senate is required to approve appointments made by the Governor. He may also suspend, for causes set forth in the constitution, officers not liable to impeachment. Suspended officers may be removed, however, only with the consent of the Senate.

The Governor also has duties in connection with the Legislature. He calls the Legislature into session on special occasions, stating the purpose for which it is called. He addresses the Legislature at each regular session, furnishing information on conditions in the state and recommending action he feels the Legislature should take. The Governor must also approve all legislation passed by the Legislature before it becomes law.

The Lieutenant Governor performs such duties pertaining to the office of the Governor as may be assigned to him by the Governor, or as otherwise provided by law.



**Reubin
O'D.
Askew**
Governor of Florida

Honorable Reubin O'D. Askew, thirty-seventh Governor of Florida, was born September 11, 1928, in Muskogee, Oklahoma. He has resided in Pensacola since 1937, and served in the U.S. Army Paratroops as a sergeant and later as a captain in the Air Force. He received his B.S. degree from Florida State University in 1951, attended Denver University in 1951, and then in 1956 received a law degree from the University of Florida. He served as Assistant County Solicitor in Escambia County from 1956 to 1958, served in the House of Representatives from 1958 to 1962, and served in the Senate from 1962 to 1970. He was President Pro Tempore of the Senate during the 1968-70 term. The Capitol Press Corps selected Governor Askew as the top freshman member of the House of Representatives in 1959, and he was a runner-up for the St. Petersburg Times award as "Most Valuable Member" of the Senate in 1965 and 1967. He received the Allen Morris Award as one of the "Most Effective Senators in Debate" in 1967.



JAMES H. "Jim" WILLIAMS
Lieutenant Governor

Honorable James H. Williams, the Lieutenant Governor of Florida, was born June 17, 1926, in Ocala, where he resides. He served in the U.S. Army Air Force, and received his B.A. degree from the University of Florida. He was elected to the Senate in 1968 and reelected in 1972, and received the St. Petersburg Times award as the "Most Valuable Member" of the Senate in 1973 and was runner-up for that honor in 1974. He received the Allen Morris Award for "Most Effective in Committee" in the Senate in 1973, and was runner-up for the Allen Morris Award for "Most Effective Member" of the Senate in 1974.

Powers of cabinet members

In addition to cabinet duties, each member of the cabinet serves as head of a division of state government.



ROBERT L. SHEVIN
Attorney General

The Attorney General is the chief legal officer of the state, serving as legal adviser to the officers in the executive department, representing the state in legal proceedings, and functioning as the head of the Department of Legal Affairs. He supervises the state attorneys in the judicial circuits of the state, and transmits to the Legislature the recommendations of circuit judges concerning legislative changes needed that relate to judicial proceedings.



DOYLE CONNER
Commissioner of Agriculture

The Commissioner of Agriculture has duties related to the agricultural industry, and inspects foods, weights and measures, and gasoline to ensure that the proper standards are maintained. As head of the Department of Agriculture and Consumer Services, he has a direct concern with consumer protection.



RALPH D. TURLINGTON
Commissioner of Education

The Commissioner of Education is the secretary and executive officer of the Board of Education, which is the head of the Department of Education. Upon his recommendation, the Board employs the personnel that supervise the public school system, vocational education, and the community colleges. The Board directly supervises the Board of Regents, which governs the state's institutions of higher learning.



GERALD LEWIS
Comptroller

The Comptroller is the chief fiscal officer of the state. He examines requests for payment of salaries and other financial obligations of the state, and issues warrants to pay the state's expenses. He is head of the Department of Banking and Finance, which also serves as the state bank examiner.



BRUCE A. SMATHERS
Secretary of State

The Secretary of State keeps records of the official acts of the Legislature and executive departments, is custodian of the Great Seal of the State, and serves as head of the Department of State, which issues charters and certificates of incorporation to corporations. He also keeps official records of all elections held in the state.



BILL GUNTER
Insurance Commissioner and Treasurer

The Insurance Commissioner and Treasurer keeps the funds and other securities belonging to the state, and disburses state funds upon order of the Comptroller, countersigned by the Governor. As Insurance Commissioner, he heads the Department of Insurance. He is also the State Fire Marshal, and in this capacity he enforces fire prevention laws and regulations.

The "Little Cabinet" is the informal name of the fulltime administrative heads of several large departments responsible to the Governor. Through these administrators, the Governor carries out many of his goals, political objectives, and policies of government.



The Executive Residence

The Governor's Mansion is the official residence of the Governor. In 1953, the Florida Legislature provided funds to remove the old mansion, which was built in 1907, and to construct a new mansion on the same location ten blocks north of the capitol. The new mansion, now occupied by Governor Reubin O'D. Askew and his family, bears a resemblance to Andrew Jackson's Hermitage near Nashville, Tennessee. Its stately white columns, offset from a background of red brick, portray a theme of Greek revival.

Governors of Florida

Dates in Office	Governor	Party	Residence when Elected
1845-1849	Moseley, William D.	D	Jefferson County
1849-1853	Brown, Thomas	W	Tallahassee, Leon County
1853-1857	Broome, James E.	D	Tallahassee, Leon County
1857-1861	Perry, Madison S.	D	Alachua County
1861-1865 (Apr.)	Milton, John	D	Jackson County (near Marianna)
1865 (Apr.-July)	Allison, Abram K.*	D	Quincy, Gadsden County
1865 (July)-1866	Marvin, William**		Key West, Monroe County
1866-1868	Walker, David Shelby	D	Tallahassee, Leon County
1868-1872	Reed, Harrison	R	Jacksonville, Duval County
1873-1874 (Mar.)	Hart, Ossian	R	Jacksonville, Duval County
1874-1877	Stearns, Marcellus L.***	R	Quincy, Gadsden County
1877-1881	Drew, George F.	D	Ellaville, Madison County
1881-1885	Bloxham, William D.	D	Tallahassee, Leon County
1885-1889	Perry, Edward A.	D	Pensacola, Escambia County
1889-1893	Fleming, Francis P.	D	Jacksonville, Duval County
1893-1897	Mitchell, Henry L.	D	Tampa, Hillsborough County
1897-1901	Bloxham, William D.	D	Tallahassee, Leon County
1901-1905	Jennings, William S.	D	Brooksville, Hernando County
1905-1909	Broward, Napoleon B.	D	Duval County
1909-1913	Gilchrist, Albert W.	D	Punta Gorda, DeSoto County
1913-1917	Trammell, Park	D	Lakeland, Polk County
1917-1921	Catts, Sidney J.	D	DeFuniak Springs, Walton County
1921-1925	Hardee, Cary	D	Live Oak, Suwannee County
1925-1929	Martin, John W.	D	Jacksonville, Duval County
1929-1933	Carlton, Doyle E.	D	Tampa, Hillsborough County
1933-1937	Sholtz, David	D	Daytona Beach, Volusia County
1936-1941	Cone, Fred P.	D	Lake City, Columbia County
1941-1945	Holland, Spessard L.	D	Bartow, Polk County
1945-1949	Caldwell, Millard F.	D	Tallahassee, Leon County
1949-1953	Warren, Fuller	D	Jacksonville, Duval County
1953-1953 (Sept.)	McCarty, Dan T.	D	Ft. Pierce, St. Lucie County
1953-1955	Johns, Charley E.****	D	Starke, Bradford County
1955-1961	Collins, LeRoy	D	Tallahassee, Leon County
1961-1965	Bryant, C. Farris	D	Ocala, Marion County
1965-1967	Burns, Haydon	D	Jacksonville, Duval County
1967-1971	Kirk, Claude R.	R	Palm Beach, Palm Beach County
1971-	Askew, Reubin O'D.	D	Pensacola, Escambia County

*President of the Senate became Acting Governor upon death of John Milton, April 1, not recognized by United States Government.

**Provisional Governor by Presidential proclamation, July 13, 1865.

***Lieutenant Governor, became Governor upon death of O. B. Hart, March 18, 1874.

****President of the Senate, became Acting Governor upon death of Dan T. McCarty, September 28, 1953.

The Judicial Branch

The Judicial Branch comprises the courts of the state, and is divided into trial and appellate courts. There are two types of trial courts and two types of appellate courts in the state in which citizens may litigate their complaints. The Legislature has now assumed the full costs of the court system, thereby granting substantial relief to taxpayers at the local level.

The Supreme Court is at the top of Florida's court system. It is the final state court of appeal, and has certain administrative responsibilities over all other courts, including trial courts. There are seven Supreme Court justices, each appointed by the Governor and retained by a popular vote every six years.

The District Courts of Appeal are the intermediate appellate tribunals to which appeals from the trial courts must go. There are four districts in Florida, with the courts located at Tallahassee, Lakeland, West Palm Beach, and Miami. Three or more judges sit on each District Court.

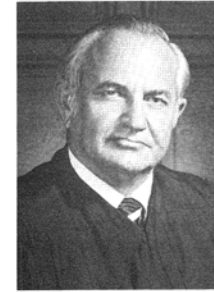
Circuit Courts are located in each of Florida's twenty judicial circuits. Some circuits contain only one county, and others are multi-county. These courts are at the top of the trial system, and also hear certain limited appeals from other trial courts. They handle several phases of trials most urgent to the citizen which were formerly vested in the county judges' courts, including probate, juvenile, and incompetence matters.

County Courts preside over the criminal trials of misdemeanors, limited civil cases, issuance of warrants of arrest, and other specified functions.

Four other bodies work directly with the judiciary to assure that the court system is continually strengthened. The Judicial Nominating Commission recommends to the Governor appointments to judicial vacancies in the state. The Judicial Qualifications Commission investigates and recommends to the Supreme Court the removal of any justice or judge whose conduct demonstrates an unfitness to hold office. The Judicial Council continuously studies the operation of the courts in Florida, and recommends to the Legislature changes in the judicial system. The Judicial Administrative Commission provides administrative services and assistance to the various courts in the state.



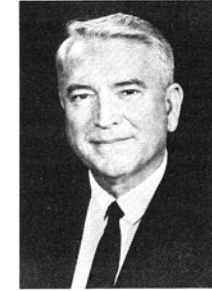
The Supreme Court



BEN F. OVERTON
Chief Justice



JAMES C. ADKINS
Justice



JOSEPH A. BOYD
Justice



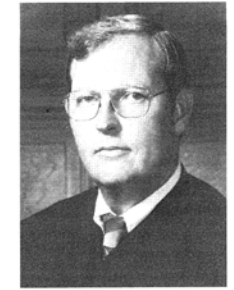
ARTHUR J. ENGLAND, JR.
Justice



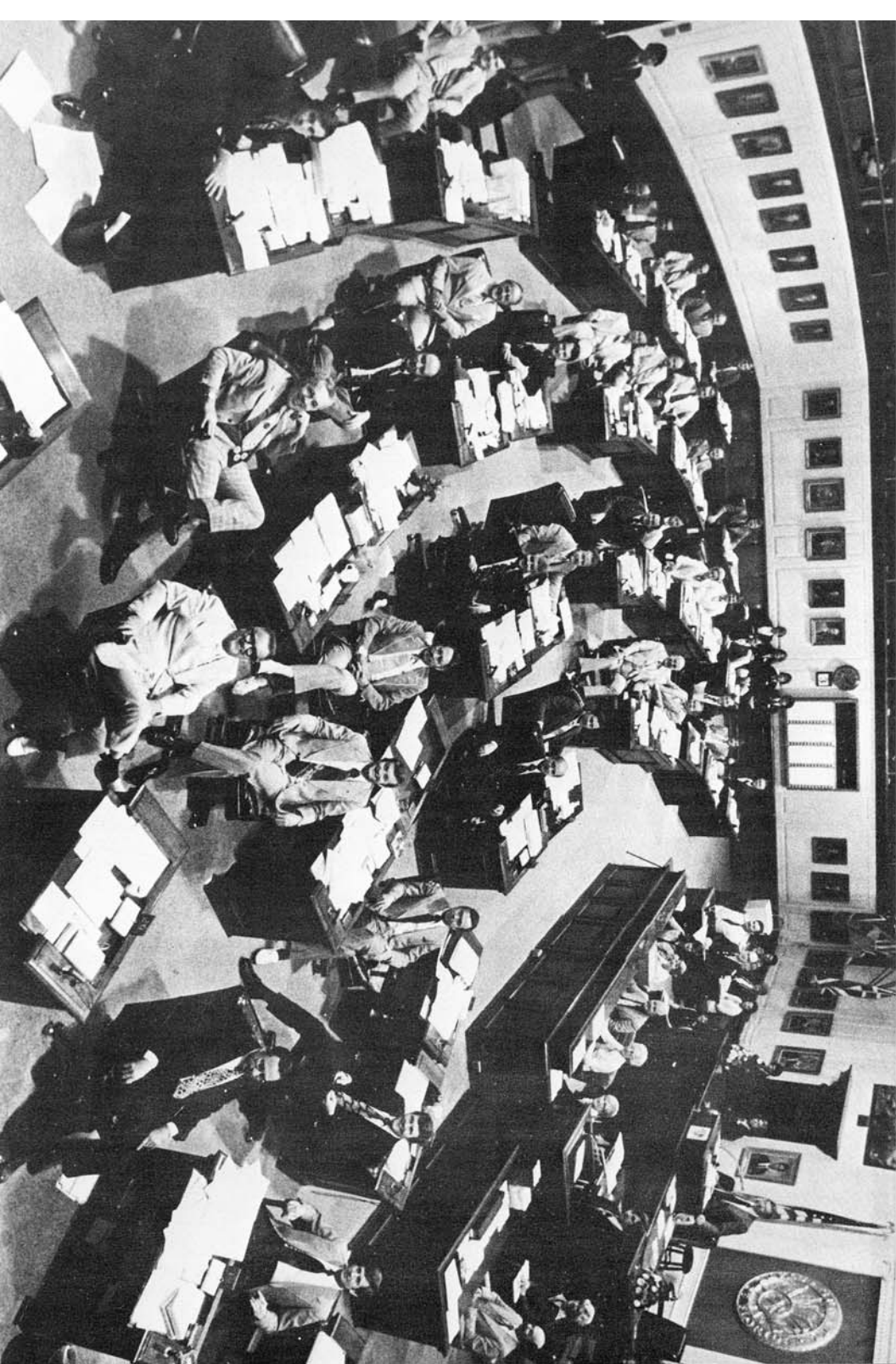
JOSEPH HATCHETT
Justice



FREDERICK B. KARL
Justice



ALAN C. SUNDBERG
Justice



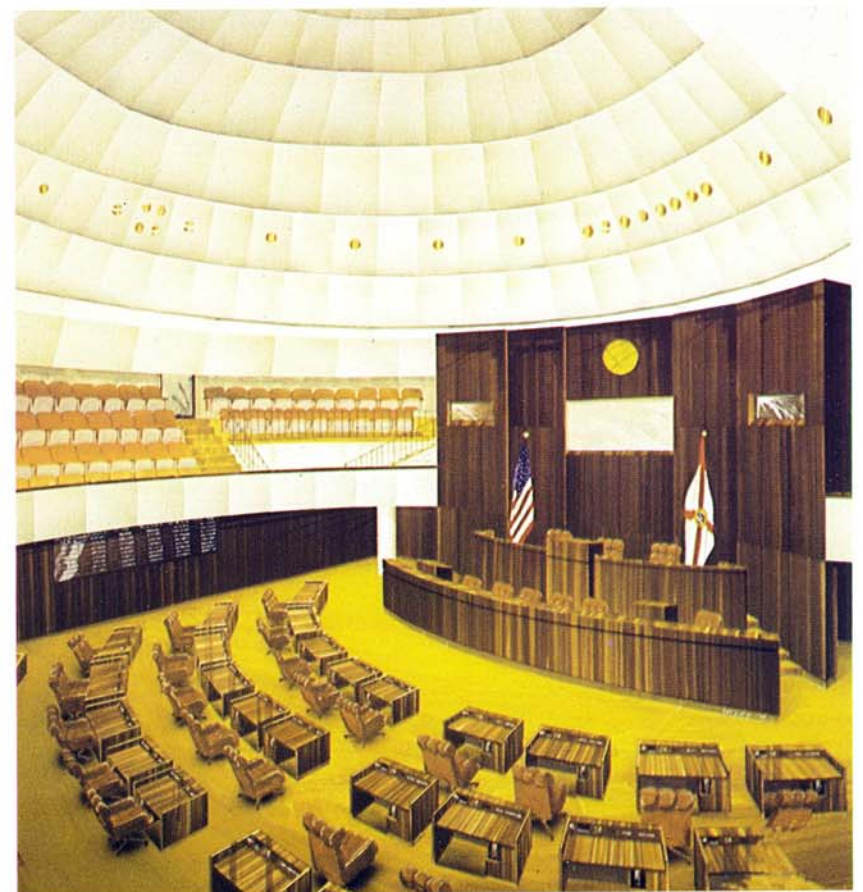
The Senate chamber

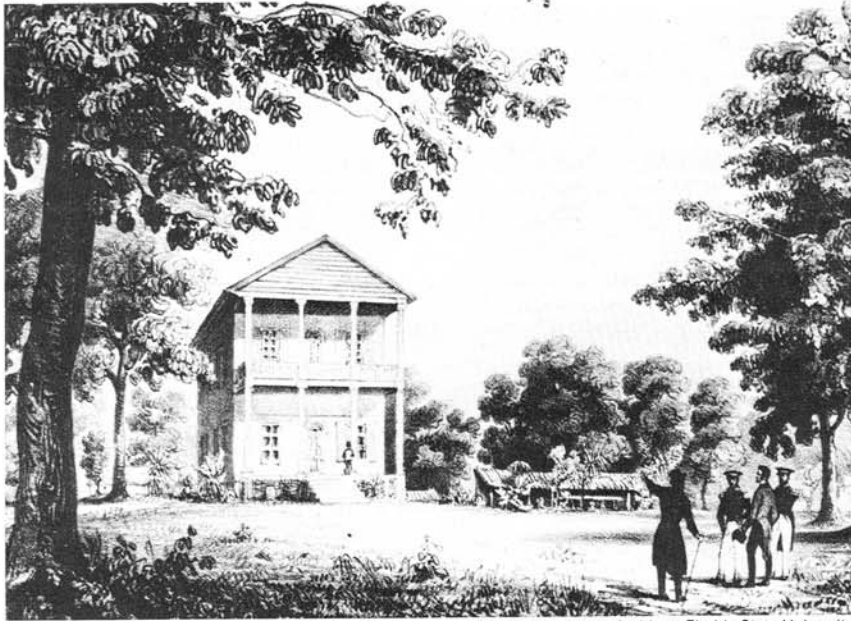
In 1977 the Senators will meet in the same chamber that has been used since 1947 (shown at left). This is apparently the third Senate chamber in the old capitol; it has been adapted to the changing size of the Senate, seating as few as 32 and as many as 48 members.

In 1978 the Senate occupies its new, more modern chamber (below) located in the new capitol complex. The new chamber is designed to facilitate the computerization of the legislative process and the public television broadcasts of Senate sessions.

Only members of the Senate and designated staff are allowed in the chamber while the Senate is in session. Guests invited by the President and certain present and past state officials may also enter the chamber during a session. All men in the chamber must wear coats and ties when the Senate is in session.

Special sections of the gallery around the chamber are set aside for families of the Senators, for the media, and for the general public.





Florida's second capitol, built in 1826.

State Photographic Archives, Florida State University.



Florida's historic state capitol

Three log buildings that served as Florida's first state capitol were erected in Tallahassee in the summer of 1824 for the use of territorial officers and the first Legislative Council. The exact location of these "government buildings" is not known, since the town of Tallahassee was not laid out until the following year; according to tradition the log capitol was situated just south of the present capitol.

In 1826, one wing of what was expected to be the permanent capitol was built on the site of the present capitol. Efforts to complete the building were unsuccessful, and this small two-story structure was used as the capitol only until late in 1839 or early in 1840.

Construction started in 1839 on the erection of a new capitol, and after delays caused by insufficient funds the capitol was completed in time for the first session of the General Assembly of the state in June, 1845.

The capitol remained without noticeable change from 1845 until 1902, except for the addition of a small cupola in 1891. In 1901-02, additions were made to the north and south ends of the building, and the dome was erected. A second enlargement, the erection of the east and west wings, was made in 1921-22. The north wing was built in 1935-37, and a south wing was completed in 1948.

In 1970, work started on the construction of a new capitol complex designed to provide adequate space for the executive and legislative branches of Florida's government. The new Senate and House Office Buildings were completed in 1973, with the completion of the new 22-story capitol in 1977.

One observer has described the new capitol complex as "an ingenious blend of the past and future Florida, the nostalgic and the visionary."

This public document was promulgated at a cost of 22 cents per copy for the purpose of informing the public about the operations and facilities of the Florida Senate and the governmental structure of Florida generally.