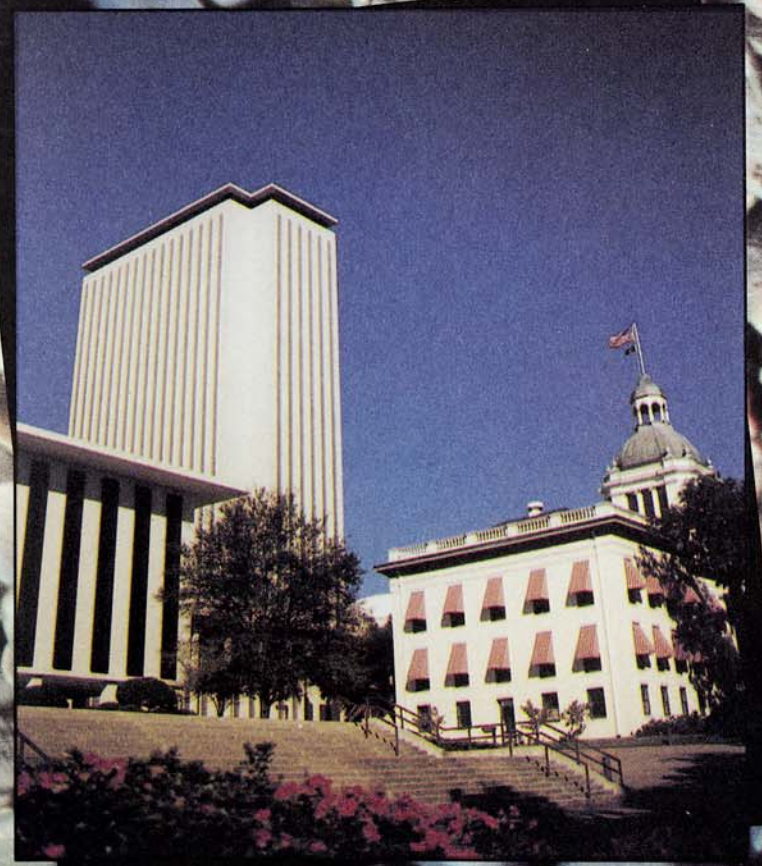


Florida Senate

1994 - 1996



MESSAGE FROM THE PRESIDENT



SENATOR JAMES A. SCOTT
President

Dear Fellow Floridians:

Since 1838, the Florida Senate, joined by the House of Representatives in 1845, has had exclusive law-making powers and determined the direction of public policy. This year for the first time in many years, the 40 men and women of the Senate will test uncharted waters.

We are prepared to confront the tough issues facing us like public safety, education, government reform, and economic opportunities. These challenges — and many others — must be faced with effective and efficient solutions.

The legislative process works best when the people we represent take an active interest in the laws and issues that affect our daily lives. This guide will help you understand the legislative process and it will introduce you to the men and women you elected to serve as Senators. I hope the information contained in this guide will encourage you to become a participant in our democratic process.

Sincerely,

A handwritten signature in cursive script that reads "James A. Scott".

James A. Scott
Senate President

The Florida Senate

The Florida Senate is made up of 40 members, each from a single district representing more than 323,448 Florida citizens. They are elected for four year terms and may be elected for more than one term.

The 1994 Senate membership includes 34 men and 6 women. There are 21 Republicans and 19 Democrats whose professions or occupations include law, medicine, banking, business, agriculture and industry. The average senator is about 50 years old, is married and has children. Thirty-five of the senators have college degrees and 35 have held other public offices before they were elected to the Senate. Sixteen senators served in the House of Representatives prior to their election to the Senate. Others have served in local governments. The Senate is presided over by a President elected by the members of the Senate for a two year term. Other officers of the



JAMES A. SCOTT
President of the Senate

Senate, also elected for two year terms, include the President Pro Tempore, the Secretary and the Sergeant at Arms. The President for the 1994-96 term is Senator James A. Scott from Ft. Lauderdale, a 19-year veteran in the Senate. The President Pro Tempore is Senator Malcolm E. Beard from Seffner, who has served in the Senate since 1980.

Additional information on these officers and the other members of the Senate, is contained on the following pages of this booklet. The booklet also further outlines and describes the Senate and its operation and its relationship to the other House of the Legislature and the other two branches of Florida government.

Elected Officers of the Senate

James A. (Jim) Scott

Republican, District 31
President



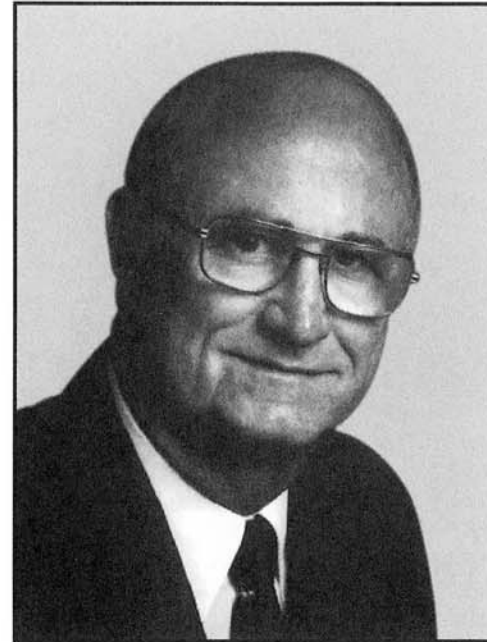
Attorney **born** January 14, 1942 in Pikeville, Kentucky. Moved to Florida in 1966 **education** University of Kentucky, B.A., 1963; J.D., 1965, Sigma Nu, Debate and Discussion Team, Phi Alpha Delta Law Fraternity **wife** Janice Ann Suskey of Miami **children** Frank and Stacy Ann **affiliations** Florida, Kentucky and American Bar Associations; Broward County and South Palm Beach County Bar Associations; Ft. Lauderdale Chamber of Commerce; University of Kentucky Law Alumni Association; Boca Raton

Chamber of Commerce **legislative service** elected to the Senate in 1976, reelected subsequently: Minority Floor Leader, 1978-80 and Minority Leader, 1980-82; chairman, Appropriations Committee, 1986-88 and 1992-93; chairman, Rules and Calendar Committee, 1989-90; vice chairman, Rules and Calendar Committee, 1993-94 **other public service** Associate Municipal Judge in Deerfield Beach, 1972; Broward Legislative Delegation Attorney, 1972-74; prosecutor in Deerfield Beach, 1973-76; Legal Aid Service of Broward County Board of Directors and Treasurer, 1974-76 **highlights** Allen Morris Awards: Most Effective First Term Member of Senate, 1978; Most Effective in Debate, runner-up, 1980-82; Most Effective Member of the Senate, 1990; Honorary Doctorate from Fort Lauderdale College; Community Service Council's Distinguished Service Award, 1984; Anti-Defamation League, "Torch of Liberty," Award, 1985; Retarded Citizens of Broward County, Legislator of the Year, 1987; Republican choice for Senate President-Designate, 1989; National Republican Legislator of the Year Award, 1990; Legislative Excellence Awards: Audubon Society, 1990, 1992 and 1993;

Nature Conservancy, "Preservation 2000 Future Generations Award," 1993; Cities in Schools, "Appreciation Award," 1993 **military service** U.S. Coast Guard **religious affiliation** Presbyterian **recreation** golf and horseback riding **addresses** (district) 2000 East Oakland Park Boulevard, Ft. Lauderdale 33306-1195 (Tallahassee) Suite 409, The Capitol, 32399-1100 **telephones** (district) 305/566-8600 (Boca Raton) 407/392-3710 (North Palm Beach) 407/833-9231 (Tallahassee) 904/487-5229.

Malcolm E. Beard

Republican, District 23
President Pro Tempore



Senator **born** February 21, 1919 in Moultrie, Georgia. Moved to Florida in 1924 **education** University of Tampa **wife** Mary Ellen Moreau of Oak Hill, West Virginia **children** Thomas Beard and Barbara Mullins **affiliations** Egypt Temple Shrine; Past Director, Royal Order of Jesters Court 89; Past President of the following: Florida Sheriffs Association; Justice of the Peace Association; Florida FBI National Academy Associates; Tampa Boys Club and Tampa Girls Club **legislative service** House of Representatives,

1978-80; elected to the Senate, March 1980, reelected subsequently **other public service** Sheriff of Hillsborough County, 1965-78; Constable of Hillsborough County, 1957-65; appointed by the Governor to serve as a member of State Governor's Commission on Human Relations; Governor's Commission on Standards and Goals; Supreme Court Advisory Committee on Plea Bargaining, Sentencing and Bail on Appeal; Governor's Task Force on the Correctional System; Interagency Law Enforcement Planning Council Region V Mutual Aid Coordinator **highlights** Governor's Medal; The Silver Medallion Award presented by

the National Council of Christians and Jews; Hillsborough County Bar Association, Liberty Bell Award; Black Community Professional Award; Jaycees Award for Good Government **military service** U. S. Navy, World War II **religious affiliation** First Christian Church; served as Deacon **recreation** hunting and fishing **addresses** (district) P. O. Box 3565, Plant City 33564 (Tallahassee) 336 Senate Office Building, 32399-1100 **telephones** (district) 813/757-9106 (Tallahassee) 904/487-5072.



Members of the Senate



William G. (Bill) Bankhead

Republican, District 8

Manager, CSX Transportation, Real Estate Sales Administration **born** January 15, 1941 in Americus, Georgia. Moved to Florida in 1944 **education** Englewood High School, 1959; University of Florida, B.S., Business Administration, 1963 **wife** Diana O'Quinn of Callahan **children** William G. III, 13 and Diana Brooke, 12 **affiliations** President, Jacksonville Jaycees, 1973-74; Regional Director, Florida Jaycees, 1975-76; member, Chamber of Commerce, Board of Governors, 1973-74, Skyliner, 1975; President, Civic Round Table, 1976; member, American Legislative Exchange Council; member, Freedoms Foundation at Valley Forge; President, Saturday Morning Toastmasters, 1977; member, Young Republicans, Advisory Board; member, National Republican Legislators Association; member, Alimacani Local School Advisory Council, 1991-92; honorary member, Jacksonville Power Squadron, 1992; life member, University of Florida Real Estate Fraternity **legislative service** House of Representatives, 1978-88, Minority Whip; elected to the Senate in 1988, reelected subsequently **other public service** Mayor's Drug Abuse Advisory Council, 1971 **highlights** Charles Dick Medal of Merit from the National Guard Association of the United States, 1992; Florida Distinguished Service Medal from the National Guard for exceptionally meritorious service and support of the Florida National Guard, 1991; Duval County Medical Society Legislative Stethoscope Award, 1991; 1990 "Distinguished Legislator Award" from the Florida Network of Youth and Family Services; 1990 Guardian of Small Business Award by the National Federation of Independent Businessmen; chosen by the Florida Sheriffs Association to receive the 1988 Legislative Award in recognition of his introduction and passage of Serious Habitual Juvenile Offender Legislation; recognized by the Florida Poison Information Center in 1992 for leadership and support in the development of a statewide network of poison information centers **military service** Florida Army National Guard, 1964-69 **religious affiliation** Presbyterian, Deacon **recreation** travel, photography, and government **addresses** (district) P. O. Box 41624, Jacksonville 32203-1624 (Tallahassee) 305 Senate Office Building, 32399-1100 **telephones** (district) 904/359-1014 or 1-800-258-0941 (Tallahassee) 904/487-5030.



Charles H. (Charlie) Bronson, Jr.

Republican, District 18

Rancher **born** September 15, 1949 in Kissimmee **education** University of Georgia, B.S.A., 1973 **wife** Regina Bolden of Macon, Georgia **children** Michelle, 16; Melanie, 13 **affiliations** Republican Men's Club of Brevard;

Florida Cattlemen's Association **legislative service** elected to the Senate in 1994 **other public service** Chairman, Brevard County Republican Party, 1992-94; appointed by President George Bush to Rural Telephone Bank Board, 1990-present; Republican State Committeeman, Brevard County, 1988-92; Republican Party of Florida, Executive Committee, 1988-present; Brevard County Sheriff's Department, Reserve Deputy, 1982-present; Dade County Reserve Deputy, 1978-79 **highlights** South Brevard Beaches Jaycees, Outstanding Young Farmer Award, 1986 **religious affiliation** Methodist **recreation** hunting and fishing **addresses** (district) Suite 2, 1300 Pine Tree Drive, Indian Harbour Beach 32937 (Tallahassee) 356 Senate Office Building, 32399-1100 **telephones** (district) 407/779-1155 (Tallahassee) 904/487-5056.



Ginny Brown-Waite

Republican, District 10

Legislator **born** October 5, 1943 in Albany, New York. Moved to Florida in 1986 **education** State University of New York, B.S., 1976; Russell Sage College, M.S., 1984; Cornell University, Certificate Program, 1980 **husband**

Harvey Waite of Albany, New York **children** Jeannine Roxby-Waite; Danene Mitchell and Lorie Sue Meaders **affiliations** B.P.W.; Suncoast MG Club; West Hernando GOP; Board member, Hernando Spouse Abuse Shelter; former treasurer, United Way **legislative service** elected to the Senate in 1992; reelected in 1994 **other public service** Hernando

County Commissioner; Legislative Director, New York State Senate **highlights** various community awards for activity and support, including 1994 Florida Sheriffs Association Legislative Award **religious affiliation** Catholic **recreation** reading and computer work **addresses** (district) 20 North Main Street, County Office Building, Rm. 200, Brooksville 34601 (Tallahassee) 316 Senate Office Building, 32399-1100 **telephones** (district) 904/544-2344 (Tallahassee) 904/487-5040.



Locke Burt

Republican, District 16

Insurance Executive; President, Ormond Re Group, Inc. **born** February 19, 1948 in Des Moines, Iowa. Moved to Florida in 1959 **education** Northwestern University, B.S.B.A., 1969; M.B.A., 1970; Loyola University, J.D.,

1974 **wife** Ann E. Snyder of Milwaukee, Wisconsin **children** Melissa, 17 and Thomas, 16 **affiliations** member: The Florida Bar, American Bar Association, Illinois Bar Association, Volusia County Bar Association **legislative service** elected to the Senate, July 31, 1991; reelected subsequently **other public service** chairman, Local Government Study Commission, 1982-84; member, Citizens Advisory Committee on Fiscal Policy and Productivity, 1991 **highlights** Distinguished Service Award, Florida Association of Domestic Insurance Companies, 1982; Good Government Award, Daytona Beach Jaycees, 1985; Man of the Year, Daytona Beach Chamber of Commerce, 1986 **religious affiliation** Episcopal **recreation** sailing and golf **addresses** (district) 140 S. Atlantic Avenue, Ormond Beach 32176; 838 E. New York Avenue, Suite B, DeLand 32724 (Tallahassee) 240 Senate Office Building, 32399-1100 **telephones** (district) 904/673-7299 or 904/738-9002 (Tallahassee) 904/487-5033.



Roberto Casas

Republican, District 39

Real Estate Broker and Investor **born** April 25, 1931 in Havana, Cuba. Moved to Florida in 1962 **education** Havana Business University, B.A., 1954 **wife** Violeta Colominas of Matanzas, Cuba **affiliations** Republican Party

of Dade County, Outstanding Member; National Republican Congressional Committee; Miami Board of Realtors; Lions Club **legislative service** House of Representatives, 1982-88; elected to the Senate in 1988, reelected subsequently **other public service** Secondary Education Planning Commission, 1983; OTB International Trade Commission **highlights** United Teachers of Dade, Tiger Award; South Hialeah Elementary PTA Recognition; Florida League of Cities, Prominent Personality, 1985; Metropolitan Dade County Legislative Appreciation **religious affiliation** Catholic **recreation** hunting and fishing **addresses** (district) 4821 W. 4th Avenue, Hialeah 33012 (Tallahassee) 216 Senate Office Building, 32399-1100 **telephones** (district) 305/827-4040 (Tallahassee) 904/487-5106.



W. D. Childers

Democrat, District 1
Dean of the Senate

Businessman **born** November 25, 1933 in Okaloosa County **education** Florida State University, B.S., 1955 **wife** Ruth A. Johnson of Wakeeney, Kansas **children** Gail, Jeanna,

Karen, and Marvel; grandchildren: Mandy, Jamie, Max, Hailey, Bradley, and Brandon **affiliations** Lions Club; Farm Bureau; Masonic Lodge #348 **legislative service** elected to the Senate in 1970, reelected subsequently: President 1980-82; Dean of the Senate **highlights** Former school teacher prior to going into business; Dean of the Senate; Allen

Morris Awards: Most Effective in Debate, three times; Most Effective in Committee, two times, and runner-up, one time; Most Effective Member of the Senate, one time; Florida State University and the Florida State University Alumni Association recognition of Outstanding Professional and Public Service Achievements; Senate Resolution commending Senator Childers and urging him to remain in the Florida Senate; Florida Blue Key Honorary Membership; University of West Florida Government Award for Outstanding Leadership and Service; Distinguished Service Award for representing the interests of Northwest Florida in the Florida Legislature; Florida Jaycees Governmental Affairs Appreciation Award; Unified Sportsmen Service Award, several years; NRA Legislator of the Year Award, 1994; Florida Association of Realtors Legislator of the Year Award, 1994 **religious affiliation** Baptist **recreation** fishing, hunting, and camping **addresses** (district) 2889 Michigan Avenue, Pensacola 32526 (Tallahassee) 205 Senate Office Building, 32399-1100 **telephones** (district) 904/944-3900 (Tallahassee) 904/487-5000.



Charlie Crist

Republican, District 20

Attorney, Senator **born** July 24, 1956 in Altoona, Pennsylvania. Moved to Florida in 1960 **education** St. Petersburg High: Senior Class President; National Honor Society; Quarterback, Varsity Football; Wake Forest

University, 1974-76: Quarterback, Varsity Football; Florida State University: Student Body Vice President; Garnet and Gold Key Honorary; B.S., Government, minor in Education, 1978; Cumberland School of Law, J.D., 1981 **affiliations** American Lung Association's President's Council of Pinellas County; Tampa Bay MDA Advisory Committee; St. Petersburg Chamber of Commerce; Pinellas Park Chamber of Commerce; Board of Directors, Operation PAR; Florida Conservation Association; Board of Directors, Police Athletic League; Fellow, American Swiss Association; Hillsborough Bar Association; St. Petersburg Bar Association; Ethics Committee, The Florida Bar; American Bar Association; Board of Governors, Republican National Lawyers Association; Pinellas County Republican Executive Committee; Area Agency on Bay Management; Administrative Board, First United Methodist Church; Suncoasters Civic Club; FSU Boosters; Rotary; Board of Directors, Suncoast Tiger Bay Club **legislative service** elected to the Senate in 1992; reelected in 1994: Senate Select Committee on Juvenile

Justice Reform; Corrections, Probation and Parole; Education; Executive Business, Ethics and Elections; Finance, Taxation and Claims; Natural Resources and Conservation; Joint Legislative Auditing **other public service** U. S. Senator Connie Mack's former State Director; Chairman, Senator Mack's Baseball Anti-Trust Advisory Committee; served as youngest member of Senator Mack's Federal Judicial Advisory Commission; Former General Counsel, National Association of Professional Baseball Leagues **highlights** Stop Turning Out Prisoners Award; Florida Sheriffs Association Legislative Award; Florida Association of School Administrators Legislative Award; Pinellas School Administrators Legislative Award; PACE Award; Florida Chamber of Commerce Roll Call Award, 1993; Leadership St. Petersburg; Outstanding Young Men of America; Florida State University Garnet and Gold Key Honorary; Tiger Bay of Tampa True Grit Award; Major League Baseball Phil Piton Award for Service **religious affiliation** Methodist **recreation** water skiing, reading, and jogging **addresses** (district) 360 Central Avenue, Suite 1210, St. Petersburg 33701 (Tallahassee) 304 Senate Office Building, 32399-1100 **telephones** (district) 813/893-5463 (Tallahassee) 904/487-5075.



Rick Dantzler

Democrat, District 17

Lawyer, Mediator, Businessperson **born** January 6, 1956 in Fort Leonard Wood, Missouri. Moved to Florida in 1956 **education** University of Florida, B.A., 1978; J.D., 1981; Florida Blue Key **wife** Julie Pope of Winter Haven **children** Elizabeth, 8; Margaret, 5 **affiliations** The Florida Bar **legislative service** House of Representatives, 1982-90; elected to the Senate in 1990, reelected subsequently **religious affiliation** Presbyterian **recreation** sports, camping, hunting and fishing **addresses** (district) P. O. Box 9225, Winter Haven 33883-9225 (Tallahassee) 200 Senate Office Building, 32399-1100 **telephones** (district) 813/294-2876 (Tallahassee) 904/487-5044.



Mario Diaz-Balart

Republican, District 37

Vice-President: Gordon, Sloan and Diaz-Balart **born** September 25, 1961 in Fort Lauderdale **education** University of South Florida **affiliations** Westchester Lions Club; past vice president, South Florida Young Republicans; former member: Elderly Services Advisory Council, Special Olympics Florida Board of Directors; Spanish American League Against Discrimination (S.A.L.A.D.); Republican National Committee's Hispanic Advisory Board; NALEO (National Association of Latino Elected Officials), Asociacion Integral Mambisa **legislative service** House of Representatives, 1988-92; elected to the Senate in 1992; Chairman of Appropriations Subcommittee D **other public service** Miami Mayor Xavier Suarez's Administrative Assistant three years; appointed by Speaker to International Trade and Investment Council, 1990; Consultive Committee of Children's First Member; National Human Rights Commission of the "Municipios de Cuba en el Exilio" Advisor; member: Dade Partners for Safe Neighborhoods, Board of Directors of the Florida Entertainment Commission **highlights** 1992 S.A.L.A.D. Public Service Award; Florida Association of Community Colleges Award; Metro Dade Legislative Award, 1989; Khoury League International Award, 1990 **historical** Rafael Diaz-Balart, grandfather, elected to Cuban House of Representatives in 1936. Juan Caballero, uncle, elected to Cuban House of Representatives in 1954. Rafael L. Diaz-Balart, father, Majority Leader of Cuban House of Representatives 1954-58 and elected to Cuban Senate in 1958. Rafael L. Diaz-Balart is currently the Economic and Commercial Advisor to the President of Costa Rica. Lincoln Diaz-Balart, brother, served in the Florida House of Representatives from 1986-89 and served in the Florida Senate from 1989-92; elected to the U. S. Congress, September 1992, Congressional District 21 **religious affiliation** Catholic **recreation** reading, biking, and diving **addresses** (district) 8890 Coral Way, Suite 215, Miami 33165 (Tallahassee) 334 Senate Office Building, 32399-1100 **telephones** (district) 305/227-7690 (Tallahassee) 904/487-5130.



Fred R. Dudley

Republican, District 25

Attorney **born** November 8, 1944 in Fort Myers **education** University of South Florida, B.A., 1965; President, Interfraternal Council; Stetson University College of Law, J.D., 1968; Dean's List **children** Charlie and Chris **affiliations** Tropical Lodge #56, Masons; Araba Shrine Temple **legislative service** House of Representatives, 1982-86; elected to the Senate in 1986, reelected subsequently **other public service** Municipal Judge, City of Cape Coral; Planning and Zoning Commissioner, City of Cape Coral; Chairman, Board of Trustees, Cape Coral Hospital; President, Cape Coral Chamber of Commerce **highlights** Allen Morris Award: Most Promising First Termer, 1986; Board Certified, The Florida Bar: Probate and Estate Planning; Fellow, American College of Trust and Estate Counsel **religious affiliation** Episcopal **recreation** music (guitar) and book collecting **addresses** (district) 1718 Cape Coral Parkway, E., Cape Coral 33904 (Tallahassee) 313 Senate Office Building, 32399-1100 **telephones** (district) 813/542-1324 (Tallahassee) 904/487-5124.



John H. (Buddy) Dyer, Jr.

Democrat, District 14

Attorney **born** August 7, 1958 in Orlando **education** Brown University, Sc.B. Civil Engineering, 1980; University of Florida College of Law, J.D., 1987; Order of the Coif, Florida Blue Key; Editor-in-Chief, *University of*

Florida Law Review, 1987; member, Chester Bedell American Inn of Court, 1986-87; Golden Key National Honor Society (Honorary Member) **wife** Karen Caudill of West Palm Beach **child** John Hugh III (Trey) **affiliations** The Florida Bar (Young Lawyers Division, Board of Governors, 1989-92); Orange County Bar Association (Young Lawyers

Section, Board of Directors, 1989-92); American Bar Association; Florida Engineering Society; Florida Lawyers Association for the Maintenance of Excellence **legislative service** elected to the Senate in 1992; reelected in 1994 **other public service** Governor's Growth Management Plan Advisory Committee, 1993; Department of Education "Classrooms First" Task Force, 1993; Florida Education Facilities Study Committee, 1994 **highlights** FTP/NEA Freshman Friend of Education Award, 1993; Quality Floridian, Florida League of Cities, 1993; Florida Audubon Society, Legislative Excellence Award, 1993; D. I. Rainey Legislative Award, Outstanding Contributions to Quality Health Care for the Citizens of Florida, 1994; James A. Ruth Outstanding Legislative Effectiveness Award, Florida Engineering Society, 1994 **religious affiliation** Presbyterian **recreation** fly fishing, reading and traveling **addresses** (district) P. O. Box 1031, Orlando 32802-1031 (Tallahassee) 204 Senate Office Building, 32399-1100 **telephones** (district) 407/423-6982 (Tallahassee) 904/487-5190.



Howard C. Forman

Democrat, District 32

Marketing Consultant **born** January 6, 1946 in Pittsburgh, Pennsylvania. Moved to Florida in 1955 **education** Miami-Dade Community College; University of Miami; New York Institute of Finance **wife** Susan Schwartzman

of Charleston, South Carolina **children** Iris and Rosette Forman; stepchildren: Todd and Michelle Stone **affiliations** Broward Lodge No. 300, Free and Accepted Masons; Mahi Shrine Temple; Knights of Pythias, Pembroke Pines Lodge No. 216; Bernard Baruch B'nai B'rith Unit; several Democratic clubs **legislative service** elected to the Senate in 1988, reelected subsequently; Chairman, Broward County Delegation, 1990 **other public service** Hallandale City Commission, 1973-76; Broward County Commission, 1976-88, Chairman: 1979-80, 1986-87, Vice-Chairman: 1978-79, 1985-86; South Florida Regional Planning Council, 1977-85; Mental Health Board, 1977-80, Chairman of MPO, 1982-84; Chairman, Broward Employment Training Agency (BETA), 1980-85; Broward Representative to Dade County Sports Authority, 1982; State Job Training Coordinating Council, 1983-84; NACO Steering Employment Committee, 1984; Chairman Broward County Expressway Authority, 1987-88; National Conference of State Legislatures Task Force for Developmental Disabilities, 1990 **highlights** Early Childhood

Development Association, 1986; Allen Morris Award: Most Promising First Termer (runner-up), Florida Times-Union Poll, 1990; Florida School Boards Association, 67 Award, 1990 and 1991; Florida Association of School Administrators, Raymond B. Stewart Gavel of Authority Award, 1991; Florida Audubon Society, Legislative Excellence Award, 1992; Florida Council for Community Mental Health, Legislator of the Year, 1993; Florida Pharmacy Association, President's Award of Excellence, 1992-93; Florida Advocates for Community Care for Disabled Adults, Award for Commitment to Community's Adults with Disabilities and CCDA Program; Florida Federation of Business and Professional Women's Clubs, Inc., Outstanding Senator for 1993; Florida Consumer Action Network, Consumer Champion Award, 1993; Sunshine Health Center, Inc., Humanitarian of the Year, 1994; American Planning Association, Florida Chapter, Legislator of the Year, 1994; ARC Broward, Inc., Senator of the Year, 1994; The Academy of Florida Trial Lawyers, Outstanding Legislator Award, 1994 **religious affiliation** Jewish **recreation** reading, bicycling, and swimming **addresses** (district) 4000 Hollywood Boulevard, Suite 340-N, Hollywood 33021-6744 (Tallahassee) 210 Senate Office Building, 32399-1100 **telephones** (district) 305/983-3200 (Tallahassee) 904/487-5103.



John A. Grant, Jr.

Republican, District 13

Attorney **born** July 12, 1943 in Tampa **education** University of Florida, 1961-62; University of South Florida, B.A., 1964; Florida State University, Master of Science and Government, 1965; Stetson University, J.D., 1968; Trinity College of Florida, Honorary Doctorate of Humane Letters (DHL), 1993 **wife** Beverley Code of Tampa **children** John, Jeanette, and James **affiliations** Egypt Temple Shrine; 32nd degree Mason; Tampa Consistory of Scottish Rite; Temple Terrace Masonic Lodge; Florida and American Bar Associations; American Judicature Society; North Tampa Kiwanis Club, past president; University of South Florida Alumni Association, past national president and National Board of Directors; University of South Florida Foundation Board of Directors; Florida State University Alumni Association; Stetson Lawyers Association; United States Small Business Administration Advisory Board, 1973-76 **legislative service** House of Representatives, 1980-86; elected to the Senate in 1986, reelected subsequently **other public service** Lakeland

City Manager Assistant, 1964; Florida Senate Administrative Assistant, 1966-67; Assistant State Attorney, 1970-72; Tampa Housing Authority General Counsel, 1972-79; Florida Ethics Commission, 1974-78, Vice Chairman, 1976-78; Chairman of the Board of Trustees, Good Samaritan Hospital, 1976-83 **highlights** Award for support of quality health care for the citizens of Florida, 1987; Freedom Award, Tampa Women for Responsible Legislation, 1987; Outstanding Legislator Award, Unified Sportsmen of Florida, 1987; Crimefighter Award, Florida Department of Law Enforcement, 1988; Florida Mental Health Counselors Association, Advocate of the Year, 1988; D.I. Rainey Legislative Award, Outstanding Contributions to Quality Health Care for the Citizens of Florida **religious affiliation** Baptist **recreation** tennis, travel, and flying **addresses** (district) 610 West Waters Avenue, Suite A, Tampa 33604 (Tallahassee) 317 Senate Office Building, 32399-1100 **telephones** (district) 813/975-6658 or 1-800-795-5597 (Tallahassee) 904/487-5068.



Alberto (Al) Gutman

Republican, District 34

Businessman **born** January 4, 1959 in Havana, Cuba. Moved to Florida in 1965 **education** Miami-Dade Community College, A.A., 1980; University of Miami, B.B.A., 1982; Phi Theta Kappa National Honor Fraternity; Golden Key National Honor Society; Honor Society of Phi Kappa Phi **wife** Marci Rabinowitz of New York, New York **children** Lauren, 7 and Ilana, 6 **affiliations** University of Miami Alumni Association; FIU Alumni Association Honorary Member; B'nai B'rith; Masons; Miami-Roads Civic Association; Young Republicans; Republicans for Environmental Protection, Founding Member; United Way Hispanic Leadership Committee **legislative service** House of Representatives, 1984-92: Joint Committee on Child Abuse; House of Representatives Liaison to the Governor's Commission for a Free Cuba; Founding Chairman of the Cuban-American Caucus of the House of Representatives; elected to the Senate in 1992; reelected in 1994; Select Committee on Hurricane Relief and Disaster Preparedness; Commissioner, Florida Commission on Minority Health, 1993-95; Select Committee on Health Care, Vice Chairman, 1994; National Conference of State Legislatures Health Care Committee; Southern Legislative Conference Environmental Quality and Natural Resources Committee; Select Committee on Telecommunications

other public service Florida Seed Capital Board, Advisory Board Member; Dade County Republican Party Executive Committeeman; United Way Hispanic Leadership Committee, Youth Sub-chairman **highlights** Legislator of the Year Awards: Florida Bingo Association, 1992; International Council of Shopping Centers, 1989; Retail Grocers Association of Florida, 1989; Outstanding Young Men of America; "OTTO" Award, 1992; Community Service Award: National Alliance of American Latins, Private Industry Council Stay in School Program; Certificate of Appreciation, United States Department of Justice Drug Enforcement Administration; Republican of the Year Award, Dade County Republican Party; Recognition for Outstanding Service, Federal Law Enforcement Officers Association; Florida Medical Association, Leadership Award, 1993; Subacute Care Month Health Care Award, 1994; Miami Association of Life Underwriters, Dade Association of Health Underwriters for outstanding leadership in Health Care Reform; Columbia Hospital Corporation Award for contributions to Health Care Reform **religious affiliation** Jewish; Temple Beth Shmuel, Beth Chaim Yosef Congregation, Temple Beth David **recreation** fishing and reading **addresses** (district) 1800 S.W. 27th Avenue, Suite 300, Miami 33145 (Tallahassee) 215 Senate Office Building, 32399-1100 **telephones** (district) 305/442-6990 (Tallahassee) 904/487-5109.



Robert T. Harden

Republican, District 7

Senator **born** July 6, 1960 in Cooperstown, North Dakota. Moved to Florida in 1964 **education** Okaloosa-Walton Junior College, A.A.; Florida State University, B.S.; College Republicans, debate team **affiliations** Fort Walton Beach Kiwanis, Okaloosa County 4-H Advisory Board, United Way Advisory Board, Restoration Ranch for Children Board of Directors **legislative service** House of Representatives, 1986-92; elected to the Senate in 1992 **highlights** Outstanding Young Men of America, 1981; Cotton, Wesley and Poche Legal Foundation's Peerless Advocate Award, 1986 **religious affiliation** Baptist **recreation** FSU football, swimming, water sports, and reading **addresses** (district) 11 Racetrack Road, N.E., Executive Park, Suite D-3, Fort Walton Beach 32547-1868 (Tallahassee) 328 Senate Office Building, 32399-1100 **telephones** (district) 904/833-9155 (Tallahassee) 904/487-5009.



James T. (Jim) Hargrett, Jr.

Democrat, District 21

Real Estate, Retail **born** July 31, 1942 in Tampa **education** Morehouse, B.A., 1964; Atlanta University, M.B.A., 1965 **wife** Berlyn Chatard of New Orleans, Louisiana **children** Crystal and James III **affiliations** Board of Directors, Moffitt Cancer Center; member, Florida First Capital Finance Corporation; Board of Directors, Hillsborough County National Conference of Christians and Jews; Board of Governors, Greater Tampa Chamber of Commerce; Florida State and Hillsborough County Democratic Executive Committees; Ybor City Chamber of Commerce; Florida Council on Crime and Delinquency; Tampa Bay Performing Arts Center Board of Trustees Alumni Club; University of Tampa Board of Trustees; United Way Florida State Campaign Chairman; Ybor City Centennial Celebration Committee; board member, Legal Environmental Assistance Foundation; Job Club Advisory Committee **legislative service** House of Representatives, 1982-1992; Chairman: Employee Management Relations Committee, Public Transportation Committee; Delegate: National Conference of State Legislatures, Southern Regional Education Board; Chairman, Florida Conference of Black State Legislators, 1984-86; Chairman, Hillsborough County Legislative Delegation, 1986-87; elected to the Senate in 1992; Chairman: Tourism, Trade and Economic Development Committee; Transportation Committee; member, Select Committee on Juvenile Justice Reform **other public service** City of Tampa Housing Authority, 1969-71; Hillsborough County Board of Consumer Affairs and Appeals, chairman, 1979-81; Florida Economic Development Advisory Council, 1980-82; City of Tampa Downtown Development Authority, 1979-82; Governor's Advisory Committee on Cable Television; Governor's Advisory Council on Minority Enterprise Development, 1984-85; Citizens' Planning and Environmental Advisory Council, 1994 **highlights** Florida Legal Services, Most Effective Legislator; Florida Consumer Action Network, Consumer Champion; Award for Tireless Leadership in Affordable Housing Issues; Florida Association of Housing and Redevelopment Legislative Award; Southern Political Science Association Appreciation Award; Airport Visionary and Preservationist Award; Polk Education Association Award for Maintaining 100% voting record in 1993; Excellence, Dedication and Devotion in Education Award from Hillsborough County Public Schools; Award for Outstanding Efforts on Behalf of Families, Pinellas County; Central Florida Human Service Center Award for Dedicated Community

Service; Elderly Handicapped and Disadvantaged Citizens, Leadership in Transportation Needs Award; Polk County Young Democrats, Democrat of the Year Award **military service** U.S. Army Reserve 1965-71 **religious affiliation** Methodist **recreation** fishing **addresses** (district) P. O. Box 11025, 2107 E. Osborne Avenue, Tampa 33680 (Tallahassee) 330 Senate Office Building, 32399-1100 **telephones** (district) 813/272-2990 (Tallahassee) 904/487-5059.



Katherine Harris

Republican, District 24

Vice President, commercial real estate firm **born** April 5, 1957 in Key West **education** Agnes Scott College, B.A., History, 1979: first position collegiate tennis team; University of Madrid: Spanish, Art, 1978; L'Abri International Fellowship, Philosophy, 1980 **affiliations** Mote Marine Laboratory, Advisory Council; Sarasota, Charlotte and Venice Chambers of Commerce; Women's Resource Center, Presidential Advisory Council; Board of Directors, Sarasota County Arts Council; Leadership Sarasota, Alumni and Steering Committees; Sarasota Jaycees; Habitat for Humanity; New College; United Cerebral Palsy **legislative service** elected to the Senate in 1994 **other public service** Congressional Intern, U. S. Senate and U. S. House of Representatives, 1978; Vice-Chair, Ringling Museum Board of Trustees **highlights** IBM, National Accounts Division, Marketing; Leadership Sarasota's Distinguished Leadership Alumni Award, 1994 **historical** Ben Hill Griffin, Jr., grandfather, served in the House of Representatives from 1956 until 1963; was elected to the Senate, serving the 7th district from 1965-66, and the 27th district from 1967-68 **religious affiliation** Presbyterian **recreation** skiing, beach volleyball **addresses** (district) 3131 Tamiami Trail South, Suite 101, Sarasota 34239-5101 (Tallahassee) 324 Senate Office Building, 32399-1100 **telephones** (district) 813/365-8683 (Tallahassee) 904/487-5081.



Betty S. Holzendorf

Democrat, District 2

Administrator **born** April 5, 1939 in Jacksonville **education** Edward Waters College, B.S., 1965; Atlanta University, M.A., 1971; University of North Florida, M.Ed., Adm., 1973 **husband** King Holzendorf, Jr. of Jacksonville **children** Kim V. Lockley, King L. III, Kevin J. and Kessler L. **affiliations** National Conference of State Legislatures; Alpha Kappa Alpha; National Council of Negro Women, Life Member; National Conference of Black State Legislators; Jacksonville Chamber of Commerce; Northside Businessmen's Club; NAACP; Northside Civic Association, Founder; Jacksonville Conference of Black Elected Officials **legislative service** House of Representatives, 1988-92; elected to the Senate in 1992, reelected in 1994: Subcommittee Chairman, Appropriations Subcommittee B (Education); Commerce Committee; Education Committee; International Trade, Economic Development and Tourism; Personnel, Retirement and Collective Bargaining; Health Care; Vice Chair, Select Committee on Juvenile Justice Reform; Gaming; Telecommunications; Joint Committee on Administrative Procedures; Chairman, Duval Legislative Delegation, 1992-93; Florida Conference of Black State Legislators, Chairperson, 1994-95 **other public service** Jacksonville AA/EEO Officer 1975-79; Jacksonville Community Liaison Officer, 1979-81; Legislative Aide, 1981-87; First Coast Black Business Investment Board; Health Clubs, USA; Mayor's Base Conversion and Redevelopment Commission, 1993-present; Jacksonville Affordable Housing Committee, 1993-present; Florida Council on Vocational Education; Coalition for a Drug and Crime Free Jacksonville; Blueprint 2000 Advisory Committee; Andrew Jackson High School Oversight Committee; Jacksonville Symphony; Minority Business Opportunity Committee; University Medical Center, Community Advisory Committee; United Way; National Council of Negro Women; Florida Laubach Organizations; Juvenile Justice Advisory Board **highlights** *Who's Who Among American Educators*, 1972; *Who's Who Among Black Americans*, 1985; Outstanding Government Award, Jacksonville Community Relations Commission, 1977; Equal Employment Opportunity Council of Jacksonville, Outstanding Service Award, 1981; Emancipation Proclamation Award; Community Service Award; National Council of Negro Women, Recognition Award, 1985; Northwest Council and Jacksonville Chamber of Commerce, Governmental Service Award, 1989; Florida A&M University: President's Award, 1990, Distinguished

Leadership Award, Bold City Classic Award, 1989, Distinguished Service Award, 1991, Meritorious Achievement Award, 1994, African American Heritage Award for support of education, 1991; Jacksonville Job Corps, Outstanding Service Award, 1990; Speaker of the Year, Eastside Brotherhood, 1990; Bethune Cookman College, Distinguished Leadership in the Legislature, 1990; River Region Board of Directors, Outstanding Service Award, 1990; Fraternal Order of Police, Outstanding Law Enforcement Support, 1990; El Bethel Divine Holiness Church, Successful Role Model Award, 1991; Florida League of Cities, Quality Legislative Award, 1992; Fraternal Order of Police Award, 1992; Cities in Schools, Legislative Award, 1992; Juvenile Justice Center, Award for Support during the 1993 legislative session; Duval Teachers United, Outstanding Legislator Award, 1993; Putnam County School Board, Outstanding Legislator Award, 1993; Florida Association of School Administrators, Raymond B. Stewart Gavel Award, 1993 and 1994; Florida Insurance Commission, 1993 Award for Excellence; Jacksonville Chamber of Commerce, Outstanding Legislator Award, 1993; Edward Waters College, Honorary Doctor of Laws, 1994; State Long-Term Care Ombudsman Council, Certificate of Appreciation for support during 1994 legislative session; Florida-Georgia Alliance for Minority Participation, 1994, In recognition of Support and Dedication; Ribault Senior High School, Class of 1994, Recognition of Support; Board of Regents of the State of Florida, resolution honoring and recognizing outstanding leadership during the 1994 legislative session; Alpha Kappa Alpha, Distinguished Service Award, 1994; Florida Chamber of Commerce, 1994, in recognition of support of the principles of free enterprise; The Meninak Club, 1994, J. Turner Butler Award for outstanding legislator **religious affiliation** African Methodist Episcopal (A.M.E.) **recreation** reading and collecting pennies **addresses** (district) 316 West State Street, Jacksonville 32202 (Tallahassee) 242 Senate Office Building, 32399-1100 **telephones** (district) 904/359-6880 (Tallahassee) 904/487-5024.



Jim Horne

R e p u b l i c a n , D i s t r i c t 6

Certified Public Accountant **born** January 20, 1959 in Orange Park **education** Florida State University, B.S., Accounting, 1980 (graduated with business degree in 3 years) **wife** Lori McArdle of Niagara Falls, New York **children** Ashley, 8; Laura, 6; John David, 3; Katherine, 9 mos. **affiliations** board member, Orange Park Rotary; board member, "Keep Clay Beautiful";

appointed member of Clay County Transit Authority **legislative service** elected to the Senate in 1994 **other public service** Chairman, Clay County Chamber Education Committee; Board member, Clay County Chamber of Commerce; President, Clay County Chamber of Commerce, 1992; Co-founder, Clay County Education Foundation **highlights** immediately upon graduation from Florida State University, Jim Horne became the youngest tax manager for Price Waterhouse in the history of its Jacksonville office **religious affiliation** Baptist **recreation** running, golf **addresses** (district) 4250 Lakeside Drive, Suite 205, Jacksonville 32210-3369 (Tallahassee) 342 Senate Office Building, 32399-1100 **telephones** (district) 904/381-6025 (Tallahassee) 904/487-5027.



Kenneth C. (Ken) Jenne II

D e m o c r a t , D i s t r i c t 2 9
Democratic Leader

Attorney **born** December 1, 1946 in New Haven, Connecticut. Moved to Florida in 1956 **education** Palm Beach Junior College, A.A., 1966; Florida Atlantic University, B.A., 1968; Florida State University, J.D., 1972; Fort Lauderdale College honorary Doctor of Humane Letters, 1978; Southeastern University honorary Doctor of Laws, 1986; Phi Alpha Delta International, Pi Sigma Alpha, Sigma Phi Epsilon, Pi Alpha Alpha, Phi Rho Pi **wife** Caroline Maslanka of St. Petersburg Beach **children** Evan Boyd and Sarah Elizabeth Anne **affiliations** St. Thomas of Villanova University Board of Trustees; Community Service Council Board of Directors; South Florida American Red Cross Board of Directors; National District Attorneys, former member; Florida Prosecuting Attorneys Association, former member; American, Florida, and Broward Bar Associations **legislative service** elected to the Senate, 1978-88; reelected to the Senate in 1990; reelected subsequently; Appropriations Committee Chairman; Rules and Calendar Committee Chairman; Judiciary Committee Chairman; Executive Business Committee Chairman; Finance, Taxation and Claims Committee Chairman; Select Committee on Hurricane Relief and Disaster Preparedness; Broward County Legislative Delegation Chairman, 1992-93 **other public service** Broward County Charter Commission, Executive Director, 1974; Broward County Commission, 1975-78, Chairman, 1976-77; Assistant State Attorney; Governor's Council on Organized Crime **military service** U.S. Army Reserve **religious affiliation** Episcopal **addresses** (district) 612 S. E. 5th Avenue, Suite 3, Ft. Lauderdale 33301 (Tallahassee) 211 Senate Office Building, 32399-1100 **telephones** (district) 305/467-4332 (Tallahassee) 904/487-5097.



Toni Jennings

Republican, District 9

Construction, Realtor **born** May 17, 1949 in Orlando **education** Wesleyan College, B.A., 1971; Rollins College, 1972; Phi Kappa Phi, Kappa Delta Epsilon, Mortar Board, Honor Court **affiliations** Orlando Area Board of

Realtors; Associated Builders and Contractors; Central Florida Builders Exchange; Delta Kappa Gamma Society International; Salvation Army Advisory Board; Orlando Museum of Art; Valencia Community College **legislative service** House of Representatives, 1976-80; elected to the Senate in 1980, reelected subsequently; Senate Republican Leader, 1984 and 1986-88; Republican Leader Pro Tempore, 1982-83 and 1985-86; Orange County Legislative Delegation Chairman: 1980-82, 1985-86, 1991-92; Seminole County Legislative Delegation, Chairman, 1990-91, 1991-92 **highlights** Florida Home Builders Association, "Legislator of the Year" Award, 1994; National Associated Builders and Contractors, Distinguished Service Award; Florida Chamber of Commerce, Award for Economic Development; National Federation of Independent Businesses, Florida Guardian of Small Business Award; National Republican Legislators Association, 2nd Annual "Frank J. Fahrenkopf, Jr., Award," Outstanding State Minority Leader; Missing Children Help Center, Tampa Chapter, Outstanding Efforts for the "Voice of the Missing Child" **historical** Jack Jennings, father, Orange County School Board Chairman. Charles H. Jennings, great-grandfather, was a member of Virginia Legislature. General Edward Martin, great-uncle, Governor of Pennsylvania **religious affiliation** Episcopal **recreation** bicycling **addresses** (district) 1032 Wilfred Drive, Orlando 32803-2571 (Tallahassee) 322 Senate Office Building, 32399-1100 **telephones** (district) 407/898-1861 (Tallahassee) 904/487-5050.



Karen Johnson

Democrat, District 11

Senator **born** November 16, 1943 in Pittsburgh, Pennsylvania. Moved to Florida in 1958 **husband** Ray Johnson **children** Greg, 30; Terri, 28; and Connie, 25; grandchildren: Kendra, 6; Shawn, 3; Johnathan Ray and

Alyssa Ann, twins, 2 1/2 **affiliations** Chamber of Commerce; Altrusa International, past president **legislative service** elected to the Senate in 1992 **other public service** elected to Citrus County School Board, 1982; reelected in 1986 and 1990; Drug Free Council; Family Resource Center Board of Directors; Adult Abuse Advisory Council; Key Training Center for Adult Mentally Handicapped; Marion, Citrus Mental Health Board; Healthy Start Regional Board representing Citrus, Hernando, Lake and Sumter Counties; Formed "Summer Scholarships" **highlights** Florida School Board Association, Outstanding First Term Legislator Award, 1993; Florida Association of School Administrators, Raymond B. Stewart Gavel of Authority Award, 1993 and 1994; Florida Association of Psychologists and National Association of School Psychologists, Caring and Dedication Award, 1993; "Top Notch" Legislator, Central Florida Community College, 1993; Greater Orlando Association of Realtors, Legislative Award, 1993; FTP-NEA Freshman Friend of Education Award, 1994; Florida School Board Association, Legislative Award, 1994; Independent Funeral Directors of Florida, Consumer and Small Business Award, 1994; Central Florida Community College, award for work in legislative funding **religious affiliation** Lutheran **recreation** boating, snow skiing, and dancing **addresses** (district) 3382 East Gulf to Lake Highway, Suite 18, Fountain Square, Inverness 34453; P. O. Box 490557, Leesburg 34749-0557 (Tallahassee) 254 Senate Office Building, 32399-1100 **telephones** (district) 904/860-5191 or 904/360-6670 (Tallahassee) 904/487-5014.



Daryl L. Jones

Democrat, District 40

Attorney, Senior Vice-President, Douglas James Securities, Inc. **born** May 31, 1955 in Jackson, Mississippi. Moved to Florida in 1981 **education** Valedictorian, Lanier High School, Jackson, Mississippi; President, Mississippi

State Association of Student Councils; high school city track champion, mile run; United States Air Force Academy: B.S., Math, with honors, 1977; Cadet Vice Wing Commander (#2 in military leadership); middleweight boxing champion; University of Miami School of Law: J.D., cum laude, 1987; Iron Arrow; Law Review, Note published; President: Student Bar Association, National Student Bar Association; Moot Court Board **wife** Myoushi Carter of Birmingham, Alabama **children** Derek L., Durel L., Michele E. **affiliations** Chair, NCSL Communications and Information Policy Committee; member: Governor's Commission on Community Service, Governor's Commission for a Sustainable South Florida, State Job Training Coordinating Council, American Bar Association, National Bar Association and Dade County Bar Association, American Bankers Insurance Group Board of Directors, Orange Bowl Committee, Zoological Society of Florida Board of Directors; Attorney/Coach, 1990 Dade County High School Mock Trial Champions, Miami Central High School; Lector, Christ the King Catholic Church; Motivational speaker at Dade County schools **legislative service** House of Representatives, 1990-92; elected to the Senate in 1992, reelected in 1994 **other public service** Aviation Division, Dade County Attorney's Office, 1988-90; Federal Judicial Clerk, Judge Peter T. Fav, 11th Circuit Court of Appeals, 1987-88; of Counsel: Fowler, White, Burnett, Hurley, Banick and Strickroot, PA, 1992-present **highlights** Most Effective Freshman Senator, ranked 3rd, *Miami Herald*, 1994; Legislator of the Year, Midwives Association of Florida, 1992; Most Effective Freshman Representative, *Miami Herald*, 1991; Freshman Legislator of the Year Award, Dade County Young Democrats, 1991; First Term Legislator of the Year, Florida School Boards Association, 1991; Outstanding Freshman Representative for Diligent Efforts on Behalf of Consumers' Rights and the Administration of Justice in Florida, The Academy of Florida Trial Lawyers, 1991; Up and Comer Award, Government, Price Waterhouse/*South Florida Magazine*, 1991; Excellence and Achievement Award for Outstanding Contributions in Community Service, the Miami Agenda, 1991; Toll Fellow, Class of 1991, The Council of State Governments; Politician of the Year Award, Mu Gamma Zeta Chapter,

Zeta Phi Beta Sorority, Inc., 1991; Service Award, Richmond/Perrine Optimist Club, 1991; Leadership Miami, Class of 1987 **military service** United States Air Force: 1977-84, F-4 Phantom Pilot; 1988-89 Puerto Rico Air National Guard A-7D Corsair II Pilot; 1989-present, USAF Reserves F-16 Falcon pilot **religious affiliation** Lector and member, Christ the King Catholic Church **recreation** all sports **addresses** (district) 9300 S. Dadeland Boulevard, Suite 401, Miami 33156 (Tallahassee) 212 Senate Office Building, 32399-1100 **telephones** (district) 305/442-6901 (Tallahassee) 904/487-5127.



George Grier Kirkpatrick, Jr.

Democrat, District 5

Real Estate, Investments **born** December 24, 1938 in Gainesville **education** Davidson College, B.S., Psychology, 1962 **wife** Monika Godzewski of West Berlin, Germany **children** Catherine Grace and George Grier III

affiliations University of Florida, College of Health Related Professions Board of Advisors; Columbus Hemispheric Trade Commission; Home Builders Association of Gainesville, past president; Florida Home Builders Association, past area Vice-President and Director; past President, United States, Florida, Lafayette County and Putnam County Chambers of Commerce; Gainesville Chamber of Commerce: past Director and Vice-President for Economic Development **legislative service** elected to the Senate in 1980, reelected subsequently **highlights** Florida Association of Counties, County Champion, 1994; Florida Dental Association, Legislator of the Year Award, 1994; Florida Association of Community Colleges, Legislative Service Award, 1993; Preservation 2000 Leadership Award, 1992; Florida Association of Realtors, Legislator of the Year Award, 1992; Florida Women's Political Caucus, Good Guy Award, 1993; Keep Florida Beautiful, Board of Directors' Award, 1990; Florida Audubon Society Legislative Excellence Award, 1989; Florida Chamber of Commerce Award for Outstanding Contributions to Economic Development in Florida, 1986; Florida Student Association, Senator of the Year Award, 1986; Florida Restaurants Association, Legislative Leadership Award, 1988; Gator Medal of Honor, 1981; Allen Morris Awards: Most Effective First Term Senator, runner-up, 1982; Most Effective in Committee, 1985, 1986 and 1987 **military service** U.S. Army, 1st Lieutenant Military Police Corps, West Berlin, Germany 1962-64 **religious affiliation** Presbyterian **recreation** hunting, fishing,

golfing, travel, enology, and origami **addresses** (district) 1103 N.W. 13th Street, Gainesville 32601 (Tallahassee) 252 Senate Office Building, 32399-1100 **telephones** (district) 904/377-3800 (Tallahassee) 904/487-5020.



Patsy Ann Kurth

Democrat, District 15

Real Estate Broker **born** February 2, 1941 in Washington, Missouri. Moved to Florida in 1960 **education** Southwest Missouri State Teachers College; Brevard Community College **husband** Alan "Al" Kurth of New Jersey **children** Dawn (deceased), Wendy, Martha, and Sara **affiliations** South Brevard Democratic Women's Club, League of Women Voters **legislative service** elected to the Senate in 1990, reelected subsequently **other public service** Brevard County Planning and Zoning Board; Planning and Zoning Board for the Town of Malabar **highlights** East Central Florida Memory Disorder Clinic Sustained Support Award, 1992 and 1994; Florida Chamber of Commerce Award for Leadership in Passage of Enterprise Florida, 1992; Mothers Against Drunk Driving, Appreciation Award, 1992; Legislator of the Year Award, 1993; Florida Restaurant Association, Florida Association of Realtors; Florida Economic Development Advisory Council, Legislative Leadership Award, 1993; Brevard County Association of Retarded Citizens, Legislator of the Year Award, 1994; Florida Nurses Association Outstanding Senator Award, 1994; Child Care Association of Brevard County, Marjorie Olsen Child Advocacy Award, 1994; State Long Term Care Ombudsman Council Support Award, 1994 **religious affiliation** Methodist **recreation** fishing, walking, quilting, and antique collecting **addresses** (district) 2174 Harris Avenue, N.E., Suite 1-B, Palm Bay 32905 (Tallahassee) 258 Senate Office Building, 32399-1100 **telephones** (district) 407/984-4951 (Tallahassee) 904/487-5053.



Jack Latvala

Republican, District 19

President, Direct Mail Systems, Inc. and Direct Response Marketing, Inc. **born** November 3, 1951 in Oxford, Mississippi. Moved to Florida in 1962 **education** Bartow High School, 1969; Stetson University, B.A., 1973 **wife** Susan Richardson of Shelbyville, Kentucky: Republican member of the Pinellas County School Board **children** Stephanie, 17; Colin, 17; Evan, 16; Christopher, 12 **affiliations** Founding President, North Pinellas Republican Club; Pinellas County Republican Executive Committee; UPARC Foundation; North Dunedin Baptist Church; Pinellas Education Foundation **legislative service** elected to the Senate in 1994 **other public service** Pinellas Sports Authority, 1987-93 (Secretary, 1988-90; Vice Chairman, 1990-91); Chairman, Palm Harbor Community Services Agency (chairman, two terms; vice chairman, 2 terms, 1985-93) **highlights** Order of DeMolay, Distinguished Service Award, 1971; Outstanding Florida College Republican, 1972; Outstanding Young Man of America, 1983 **religious affiliation** Baptist **recreation** fishing **addresses** (district) 35111 U.S. Highway 19, North, Suite 203, Palm Harbor 34684 (Tallahassee) 302 Senate Office Building, 32399-1100 **telephones** (district) 813/787-8991 (Tallahassee) 904/487-5062.



John M. McKay

Republican, District 26

Real Estate Broker, Mortgage Broker **born** September 23, 1948 in Winter Haven **education** Florida State University, B.S., 1972 **wife** Deborah D. Dye of Bradenton **children** Mary Patricia, Sara Jane, and Meredith **legislative service** elected to the Senate in 1990, reelected subsequently **other public service** Chairman, Bradenton Downtown Development

Authority, 1989-90; Chairman, Bradenton Community Redevelopment Agency, 1989-90; Board of Directors, Habitat for Humanity, 1989-90; member: Chamber of Commerce, Kiwanis Club; Board member, Learning Disability Association of Florida **highlights** Florida Alcohol and Drug Abuse Association, Legislator of the Year Award, 1994; Florida Medical Association, Legislative Leadership Award, 1993; Florida Association of Community Colleges, Legislative Service Award, 1993; Florida Chamber of Commerce, Cornerstone of Florida Business Award, 1993 **historical** Dewey Dye, Sr., wife's grandfather, Florida Senate President pro tempore 1939-41. D. B. McKay, great-uncle, Mayor of Tampa for 16 years in the early 1900's. Mitchell F. McKay, grandfather, Clerk of the Criminal Court in Tampa 1908-10, Deputy Clerk of Circuit Court 1924-28 **military service** Army National Guard and U.S. Army Reserve, 1969-75, honorable discharge **religious affiliation** First Presbyterian Church of Bradenton, Elder **recreation** golf and sailing **addresses** (district) 2424 Manatee Avenue, West, Suite 101, Bradenton 34205 (Tallahassee) 318 Senate Office Building, 32399-1100 **telephones** (district) 813/741-3099 (Tallahassee) 904/487-5078.



Matthew Meadows

Democrat, District 30

Personnel Administrator, School Board of Broward County **born** September 5, 1938 in Ft. Pierce **education** Bethune-Cookman College, 1961; President of Student Government Association; President, Kappa

Alpha Psi; graduate studies: University of Massachusetts and Nova University; graduate seminars: University of New Hampshire, Harvard University **wife** Charley Mae Harris of Macon, Georgia **children** Matthew, Felicia, Debbie, Tommy and Priscilla **legislative service** elected to the Senate in 1992; reelected in 1994 **other public service** consultant: State Department of Education, Florida Right to Read Sessions **highlights** *Who's Who Among American Colleges and Universities* **religious affiliation** Baptist **recreation** bowling and fishing **addresses** (district) 3741 West Broward Boulevard, Suite 206, Ft. Lauderdale 33312-1041 (Tallahassee) 224 Senate Office Building, 32399-1100 **telephones** (district) 305/327-6200 or 1-800-459-3330 (Tallahassee) 904/487-5112.



William G. (Doc) Myers, M.D.

Republican, District 27
Majority Leader

Physician **born** September 28, 1930 in Kittanning, Pennsylvania. Moved to Florida in 1961 **education** University of Pittsburgh: B.S., 1952, M.D., 1956; Rotating internship Southside Hospital, Pittsburgh, 1957; internal medicine residency, 1958; Pi Kappa Alpha; Football 1, 2, 3; Nu Sigma honorary; Pitt Players; Alpha Omega Alpha honorary; Nu Sigma Nu **wife** Carol Anne Edgar of Washington, Pennsylvania **children** Jacqueline Jolane Means, William George Jr., Bradley Stephen, Brian Jeffry, Barry Douglas, and Jennifer Sue **affiliations** Knights of Pythias, past member; Elks; Martin County Medical Society; American, Florida, and Southern Medical Associations **legislative service** House of Representatives, 1978-82; elected to the Senate in 1982, reelected subsequently; Republican Whip, 1984-86; Joint Advisory Council on Intergovernmental Relations Committee, member; Health and Rehabilitative Services Committee Chairman, 1986-88; Republican Leader Pro Tempore, 1986-88; Republican Leader, 1988-90, 1994-96 **other public service** Martin County Commission Chairman, 1968-72 and 1976-78; Health and Rehabilitative Services Department District IX Advisory Council Chairman, 1977-78; Health Planning Council, 1977-78; Treasure Coast Regional Planning, 1976-78 **highlights** University of Pittsburgh James Heard Prize Medicine Award, 1952; S.O.D.A. (Stamp Out Drug Abuse) Martin County Founder 1970; Allen Morris Awards: Most Effective in Debate Award, runner-up 1986; Most Effective Freshman Senator, runner-up; and Most Respected Senator, 1990 **religious affiliation** Methodist **recreation** tennis, racquetball, and squash **addresses** (district) 50 Kindred Street, Suite 301, Stuart 34994-3058 (Tallahassee) 346 Senate Office Building, 32399-1100 **telephones** (district) 407/283-3133 (Tallahassee) 904/487-5088.



John Ostalkiewicz

Republican, District 12

President and Owner of: Ostalkiewicz Diamond Importers (1969-present) in Rhode Island, Massachusetts and Florida, Park Importers (1990-present), Liger Software (1992-present) **born** September 19, 1952 in Beverly,

Massachusetts. Moved to Florida in 1988 **education** Babson College, B.S. in Accounting, 1974: Young Republicans; Junior Achievement; President, Chess Club; Gemological Institute of America, Graduate Gemologist **wife** Cynthia Celona of North Providence, Rhode Island **children** Joshua, 12; Rebecca, 10; Samuel, 7 **affiliations** Jewelers of America **legislative service** elected to the Senate in 1994 **other public service** Founder of Family Rights Committee, Inc., 1989-present; host of FM talk show: John Ostalkiewicz's Family Rights Show, 1992-present; sponsor of Leukemia Society Annual Diamond Ball, 1991-present **highlights** Author: *Child Abuse Witchhunt*; Educator of Economics at Johnson and Wales College **religious affiliation** Baptist **recreation** tennis, basketball, chess, family **addresses** (district) 6000 S. Rio Grande Avenue, Suite 101, Orlando 32809 (Tallahassee) 312 Senate Office Building, 32399-1100 **telephones** (district) 407/858-6183 (Tallahassee) 904/487-5047.



Tom Rossin

Democrat, District 35

Attorney, Banking Consultant **born** August 29, 1933 in New York, New York. Moved to Florida in 1958 **education** Columbia University, B.S., 1957; University of Miami, J.D., 1965 **wife** Joyce Thornton of Colquitt, Georgia **children**

Thomas Rossin, Jr.; Allen Rossin; Michael Rossin; Robert Bouchlas, Jr.; Sam Bouchlas; Andrew Bouchlas; Sandi Bouchlas **affiliations**

Immediate Past Chairman, Economic Council of Palm Beach County; Chairman, Hanley Hazeldon Center at St. Mary's Hospital; Chairman of Audit Committee, Hospice of Palm Beach County; Past President, Community Bankers of Florida; Board Member, Big Brothers, Big Sisters; Past President, Boy Scouts of America Gulfstream Council; American, Florida, and Palm Beach Bar Associations **legislative service** elected to the Senate in 1994 **other public service** Past President (9 years), West Palm Beach Downtown Development Authority; Past Vice Chair, Palm Beach County Charter Revision Commission; Member, Joint Committee to Increase Government Efficiency **highlights** President, Flagler National Bank (1974-1993); Boy Scouts Silver Beaver Award; American Free Enterprise Award recipient **religious affiliation** Protestant **recreation** tennis and skiing **addresses** (district) 505 S. Flagler Drive, Suite 1001, West Palm Beach 33401; Lee County Courthouse, 2120 Main Street, Ft. Myers 33901 (Tallahassee) 230 Senate Office Building, 32399-1100 **telephones** (district) 407/837-5400 or 813/338-2646 (Tallahassee) 904/487-5356.



Ronald A. Silver

Democrat, District 38

Attorney **born** June 25, 1943 in Cambridge, Massachusetts. Moved to Florida in 1958 **education** University of Miami, B.A., 1965; University of Miami, School of Law, J.D., 1968, Student Bar Association Senator; Phi Alpha

Delta **wife** Irene Huth of Savannah, Georgia **children** Elayne and Joel **affiliations** American Judges Association; North Dade Bar Association President, 1975; Florida Council of Bar Association Presidents, Chairman, 1977-78; North Miami Beach Jaycees, President, 1971; B'nai B'rith Simcha Lodge; Golden Glades Masonic Lodge; North Miami Beach Kiwanis Club; B'nai B'rith Anti-Defamation League Regional Board; United Democratic Club; William Lehman Involved Democrats **legislative service** House of Representatives, 1978-92: Chairman, Dade County Legislative Delegation, 1982-83; House Majority Whip, 1984-86; House Majority Leader, 1986-88; House Floor Leader for Governor, 1990-92; elected to the Senate in 1992; reelected in 1994; Democratic Leader, 1994 session **other public service** Miami Assistant City Attorney, 1972-75; Lauderdale Lakes Municipal Judge, 1975-77; North Miami Beach Prosecuting Attorney, 1968-72; Governor's Task Force on Juvenile Justice Delinquency Prevention; Governor's Task Force on

Criminal Justice; Chairman, Mobile Home Study Commission, 1983-84; Co-chairman, Ad Hoc Corrections Committee, 1990-91; Chairman, Condominium Study Commission, 1990-91; Chairman, Foreclosure Study Commission, 1991 **highlights** Allen Morris Award: Most Effective in Debate, 1988; Florida Department of Law Enforcement Crime Fighters Award, 1989; Miami Beach Chamber of Commerce Special Recognition Award for Outstanding Efforts on behalf of the economic future of Miami Beach, 1983; U. S. Jaycees Outstanding Young Man of America, 1977; Dade League of Cities Good Government Awards, 1985, 1986, 1988; United States Department of Justice/Drug Enforcement Administration, appreciation for outstanding contributions in the field of law enforcement, 1991; Florida Sheriffs Association, Senator of the Year Award, 1994 **religious affiliation** Jewish **recreation** tennis, softball, and basketball **addresses** (district) 115 N.W. 167th Street, 2nd Floor, N. Miami Beach 33169 (Tallahassee) 246 Senate Office Building, 32399-1100 **telephones** (district) 305/655-1701 (Tallahassee) 904/487-5121.



Donald C. (Don) Sullivan, M.D.

Republican, District 22

Orthopedic Surgeon **born** June 10, 1936 in Chicago, Illinois. Moved to Florida in 1972 **education** Northwestern University, B.S., 1958; Roosevelt University; Baylor University, M.D., 1962 **wife** Irene Hyland of Detroit,

Michigan **children** Mary, Patrick, and Andrew **affiliations** Pinellas County Medical Society; Florida Medical Association; American Medical Association; member: American Academy of Orthopedic Surgeons, Florida Orthopedic Society **legislative service** elected to the Senate in 1992; reelected in 1994 **other public service** Board of Directors, Goodwill Industries; Board of Directors, Straight Foundation, Inc.; Board of Directors, Pinellas County Medical Society; Member of Leadership St. Petersburg **highlights** Merit Award Pinellas County Medical Society, 1989-90 and 1991-92; Veterans of Foreign Wars; American Legion; Certified, American Board of Orthopedic Surgery; American Medical Association's Physician's Recognition Award **military service** U. S. Air Force, orthopedic surgeon **religious affiliation** Catholic **recreation** hunting and private pilot **addresses** (district) 8050 Seminole Office Center, Suite 330, Seminole 34642 (Tallahassee) 340 Senate Office Building, 32399-1100 **telephones** (district) 813/547-7801 (Tallahassee) 904/487-5065.



Pat Thomas

Democrat, District 3

Insurance Executive and Mortgage Broker **born** November 21, 1933 in Quincy **education** Quincy High School; Future Farmers of America, State Vice President; University of Florida, B.S.A., 1957, Florida Blue Key, Alpha Gamma Rho President, Senior Class President **wife** Mary Ann Jolley of Naples **children** Anne Jolley Thomas and John Pat Thomas; grandchildren: Corbett Proctor, Ivie Elizabeth and Audrey Anne Thomas **affiliations** BPOE and Rotary, Past President; 32nd Degree Mason; Shriner **legislative service** House of Representatives, 1972-74; elected to the Senate in 1974, reelected subsequently; President Pro Tempore, 1992-93; President, 1993-94 **other public service** Chairman, Democratic Party of Florida, 1966-70 **highlights** One of Florida's Five Outstanding Young Men, 1967; National Junior Chamber of Commerce's nominee as Outstanding Young Man of America, 1967; DeMolay Legion of Honor; Allen Morris Awards: Most Outstanding First-Term Member of the Senate, 1976; Most Effective in Debate, 1981 and 1986; Most Effective in Committee, 1983 and 1986; Most Respected Senate Member, 1990 runner-up **military service** U.S. Army, Korea **religious affiliation** Presbyterian **recreation** hunting, boating, and fishing **address** 220 Senate Office Building, 32399-1100 **telephone** 904/487-5004.



William H. (Bill) Turner

Democrat, District 36

Education administrator, former policeman, former teacher, consultant **born** August 1, 1931 in Miami **education** Bethune Cookman, B.S., 1956; University of Miami, M.Ed., 1969; Honorary Doctor of Laws Degree, Faith College, Birmingham, Alabama, 1982 **wife** Julia A. Turner of Summerton, South Carolina **children** Sereetta, 35; Inger, 28; Mark, 25; Gersen, 21; Gina, 14; Wade, 13; Aaron, 11 **affiliations** lifetime member,

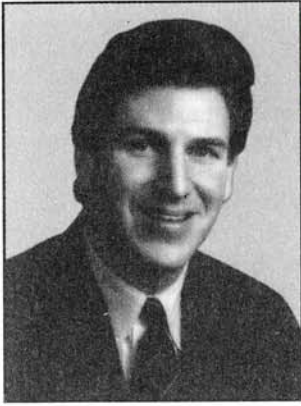
Dade Association of Vocational Adult Career and Community Education; lifetime member, AARP; Miami Shores Chamber of Commerce; North Miami Chamber of Commerce; Miami-Dade Chamber of Commerce; Dade County School Administrators Association; National Jewish Democratic Council; Greater Biscayne Boulevard Chamber of Commerce; Circuit and County Courts Value Adjustment Board; Youth Crime Watch of America Advisory Board; Hialeah Hospital Advisory Board; Dade Public Education Fund Board of Directors; Veterans Wish Foundation Honorary Chairperson; Model Cities Program Administering Board; Miami-Dade Community College Advisory Board; Dade County Tax Adjustment Board; Elks Lodge 308 Executive Committee; Council of Great City Schools; National Alliance of Black School Educators; Youth Industries Advisory Board; Community Action Advisory Board; Released Employment Placement Service Advisory Board; Carver YMCA Board of Management; Dade County Association for Retarded Children; Black Grove; Third Century-Planning Committee; The Democratic Club of Miami Beach; Southern Association of Black Administration Personnel, Inc.; Economic Development and Job Placement Council; Urban League of Greater Miami; School Board's Self Insurance Commission; member: Southern Regional Education Board, Education Accountability Commission, Vision 2000 **legislative service** elected to the Senate in 1992, reelected in 1994; Dade County Legislative Delegation Chairman, 1993-94 **other public service** elected to Dade County School Board, 1971, 1974, 1982, 1986 and 1990; elected Chairman, 1989 and 1990 **highlights** Meritorious Service Award in appreciation of distinguished volunteer service on behalf of the United Negro College Fund and its member colleges and universities to assist deserving students in fulfilling their ambition to attend college; "William H. Turner Technical Arts High School Day" proclaimed by Metropolitan Dade County, April 1994; The Special Leadership and Community Service Award in special recognition and appreciation for superlative and invaluable contributions, JESCA, June 1994; The Haitian Health Foundation of South Florida in appreciation for support, commitment and devotion to the Haitian community, May 1994; Harbor View Hospital in appreciation for dedicated service and leadership in issues regarding health care for the elderly, August 1994; Recognition of outstanding legislative contributions to promote better education for the children of Florida, Florida Association of School Administrators, 1993; Recognized as "A Living Legend," W. D. Redmond Christian Academy, 1993 **military service** U. S. Army, 1951-53 **religious affiliation** Episcopal **recreation** fishing and listening to jazz **addresses** (district) 9999 N. E. 2nd Avenue, Suite 207, Miami Shores 33138 (Tallahassee) 234 Senate Office Building, 32399-1100 **telephones** (district) 305/758-8100 (Tallahassee) 904/487-5116.



Peter M. Weinstein

Democrat, District 33

Attorney **born** February 3, 1947 in New York, New York. Moved to Florida in 1977 **education** New York University, B.S., 1967; Junior and Senior Honorary Societies; Brooklyn Law School, J.D., 1970 **wife** Barbara Ann Forman of Chicago, Illinois **children** Andrew and Michael **legislative service** elected to the Senate in 1982, reelected subsequently; Broward County Legislative Chairman, 1985-86; Majority Leader, 1990-92 **other public service** Florida Sentencing Guidelines Commission, 1985-88; Florida Crime Prevention and Law Enforcement Study Commission, 1988; Florida Judicial Council, 1989-92, 1994; Florida Guardianship Oversight Board Chairman, 1991-94; Assistant District Attorney, Queens County, New York; Assistant State Attorney, Broward County; member: Broward County Charter Review Commission; Article V Task Force, 1994-present **highlights** Allen Morris Awards: Most Outstanding First-Term Member of the Senate, 1983-84; Most Effective in Committee, runner-up, 1987-88; "Legislative Child Advocate of the Year" by the Early Childhood Development Association, 1986; recognition of dedicated service to Florida children by the Florida Children's Forum, 1991, 1992, 1993 and 1994; Florida Distinguished Service Medal by the Florida National Guard, 1991 **historical** The Honorable Moses Weinstein, father, New York Supreme Court Justice retired, and former Speaker of New York State Assembly; The Honorable Jeremy Weinstein, brother, former New York State Senator, currently New York City Judge **military service** U.S. Army, awarded the Army Commendation Medal, discharged as Captain **religious affiliation** Jewish **recreation** reading and photography **addresses** (district) 7880 N. University Drive, Suite 301, Tamarac 33321 (Tallahassee) 236 Senate Office Building, 32399-1100 **telephones** (district) 305/726-1400 (Tallahassee) 904/487-5094.



Robert Wexler

Democrat, District 28

Attorney **born** January 2, 1961 in New York, New York. Moved to Florida in 1971 **education** Emory University, 1978-79; University of Florida, B.A., 1982; George Washington University Law School, J.D., 1985 **wife** Laurie

Cohen of Glens Falls, New York **children** Rachel, 5; Zachary, 2 **affiliations** The Florida Bar; PTA-Calusa Elementary School; Board of Directors of the Boca Raton Museum of Art and Caldwell Theatre **legislative service** elected to the Senate in 1990, reelected subsequently; Chairman, Criminal Justice Committee, 1993; Chairman, Finance, Taxation and Claims Committee, 1994; Chairman, Palm Beach County Delegation, 1994; Chairman, Hendry County Delegation, 1992 **other public service** member: Palm Beach County Planning and Zoning Commission, 1989-90; Palm Beach County Democratic Executive Committee; Palm Beach County Affordable Housing Commission, 1990; Energy Committee of the State and Federal Assembly of the National Conference of State Legislatures **highlights** Florida Prosecuting Attorneys Senatorial Leadership Award, 1993; Palm Beach County Police Benevolent Association, Leadership Award, 1994; Florida League of Cities, Quality Floridian Award, 1993; FTP-NEA Freshman Friend of Education Award, 1992; Florida League of Conservation Voters, Silver Medal Award, 1991 and 1992; Veterans of Foreign Wars, Certificate of Appreciation, 1992; Century Village West, Outstanding Legislator Award, 1991; Voters Coalition, Most Promising Newcomer Award, 1991 **religious affiliation** Jewish **recreation** archery, basketball, sky diving, handball **addresses** (district) 2500 N. Military Trail, Suite 252, Boca Raton 33431 (Tallahassee) 228 Senate Office Building, 32399-1100 **telephones** (district) 407/994-6505 (Tallahassee) 904/487-5091.



Charles Williams

Democrat, District 4

Realtor, insurance, farmer **born** March 25, 1939 in Gilchrist County **education** Florida State University, B.S., Business Administration, 1961; Alpha Kappa Psi; ROTC, commissioned 2nd Lieutenant upon

graduation; ROTC Distinguished Military Student at FSU, 1961 **wife** Marilyn Jones of Branford **children** Charles III, 32; Cherie, 27; Wesley, 20 **affiliations** Masonic Lodge, Rotary Club **legislative service** elected to the Senate in 1992, reelected in 1994 **other public service** Suwannee County Commissioner: 1988-92, Chairman, 1991-92; member, Suwannee River Task Force, 1988-90; Suwannee River Coordination Committee, 1990-92; North Central Florida Regional Planning Council, 1988-92 **highlights** President, Lakeland Jaycees, 1967; One of Five Outstanding Young Men of Lakeland, 1968; President: Polk County Association of Insurance Agents, Lakeland Association of Insurance Agents; Florida League of Cities, Quality Floridian, 1993; Northeast Florida Educational Consortium, Outstanding Freshman Senator, 1993; Organized Fishermen of Florida, Legislative Award, 1994; Florida Farm Bureau, Legislative Award, 1994; Small County Coalition, Leadership Award, 1994 **military service** U. S. Army, 1962-64 **religious affiliation** Baptist **recreation** fishing and hunting **addresses** (district) 102 Dowling Avenue, Live Oak 32060 (Tallahassee) 250 Senate Office Building, 32399-1100 **telephones** (district) 904/364-7777 (Tallahassee) 904/487-5017.



Elected non-member officers

At its organization session every two years, the Senate elects a Secretary of the Senate and a Sergeant at Arms. These two officers are not members of the Senate. The Secretary keeps all Senate records and authenticates each act and joint resolution passed by the Senate. He also publishes the journal and the calendar and supervises Legal Research and Drafting, which drafts proposed legislation. The Sergeant maintains order in the chamber, in the gallery and in committee rooms. He is responsible for the acquisition and maintenance of all Senate property.



Joe Brown

Secretary of the Senate

born July 15, 1932 in Columbus, Georgia. Moved to Florida in 1932 **education** University of Florida, B.S.J., 1958, student publications; student government; Sigma Delta Chi; Alpha Gamma Rho; Florida State University, 1972-73, Graduate Certificate in Public Administration and Executive Management **wife** Rebecca Anne Etheridge of Waycross, Georgia **children** Joe, Charles, Julie Lawhead, Ivy Harger, and Andi Concar; grandsons: Jared Lawhead and Adam White **affiliations** Past and present: American Legion, Elks, Jaycees, Kiwanis, Boy Scouts, University of Florida Alumni Association, and Florida Blue Key honorary **legislative service** Assistant to Speaker of the House of Representatives, 1967; Senate Governmental Operations Committee, Staff Director 1971-72; Senate Director of Management and Staff, 1973-74; elected Secretary of the Senate, April 2, 1974; reelected subsequently; American Society of Legislative Clerks and Secretaries, past president; National Conference of State Legislatures, past Staff Vice President and past Staff Chair; Advisor and/or Counselor for Boys State, Girls State, YMCA Youth Legislature, and Silver-Haired Legislature **other public service** Executive Assistant to Commissioner of Agriculture, 1961-67; State Tourist Director, 1967; Deputy Beverage Director, 1967-68; Hotel and Restaurant Commissioner, 1969 **military service** U.S. Air Force, 1950-53 Korea; U.S. Coast Guard Reserve **religious affiliation** Methodist **recreation** hunting, fishing, camping, and cooking **address** Suite 404, The Capitol, 32399-1100 **telephone** 904/487-5270.



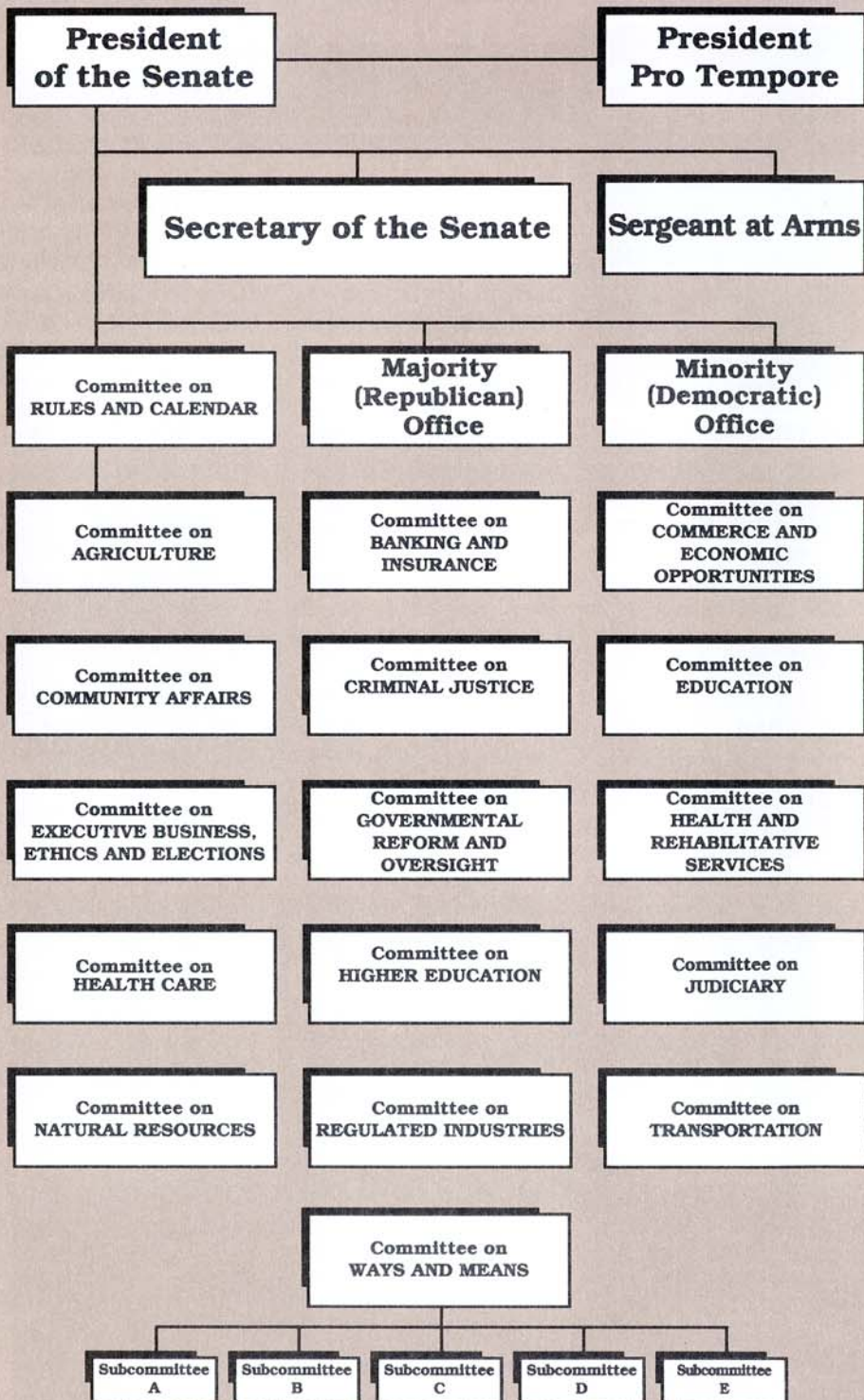
Wayne W. Todd, Jr.

Sergeant at Arms

born July 19, 1944 in Tallahassee **education** Florida State University, B.S., 1968; attended Florida State University College of Law **wife** Ann Sadler of St. Petersburg **children** Kathryn Jennifer Tennyson and Julie Hunt **affiliations**

Tallahassee Ballet Board of Directors **legislative service** Acting Sergeant at Arms of the Senate, 1982; elected Sergeant at Arms of the Senate, November 16, 1982, reelected subsequently; President, National Legislative Services and Security Association, 1985-87; National Conference of State Legislatures Executive Board, 1988-90 (member, Legislative Staff Coordinating Committee Task Force on Professional Staff Development); member, Assembly for State Issues (Legislative Management Committee) **highlights** Florida Jaycees "Distinguished Service Award," 1977; United States Jaycees Outstanding Young Men of America, 1974; Jaycees Governmental Affairs Committee, State Chairman; U.S. Marshal's Training Academy, Washington, D.C., "Specialized Security" certificate, 1972 **military service** Florida National Guard, 1962-66 **religious affiliation** Methodist **recreation** hunting and fishing **address** Suite 403, The Capitol, 32399-1100 **telephone** 904/487-5224.





Presidents of the Senate

Session	President	Session	President
1839-40	John Warren	1925	John S. Taylor
1841	William P. Duval	1927	Samuel W. Anderson
1842	William H. Brockenbrough	1929	Jesse J. Parrish
1843-44	George Walker	1931	Patrick C. Whitaker
1845	James A. Berthelot	1933	Truman G. Futch
1846	Dennitt H. Mays	1935	William C. Hodges
1847	Daniel G. McLean	1937	D. Stuart Gillis
1848	Erasmus D. Tracy	1939	J. Turner Butler
1850-52	Robert J. Floyd	1941	John R. Beacham
1854-55	Hamlin V. Snell	1943	Philip D. Beall
1856	Philip Dell	1945	Walter W. Rose
1858-59	John Finlayson	1947-48	S. Dilworth Clarke
1860-61	Thomas Jefferson Eppes	1949	Newman C. Brackin
1862-63	Enoch J. Vann	1951	Wallace E. Sturgis
1864	Abraham K. Allison	1953	Charley E. Johns
		1955-56	W. Turner Davis
		1957	William A. Shands
		1959	Dewey M. Johnson
		1961	W. Randolph Hodges
		1962-63	F. Wilson Carraway
		1965	James E. Connor
		1967	Verle A. Pope
		1968-70	John E. Mathews, Jr.
		1970-72	Jerry Thomas
		1972-74	Mallory E. Horne
		1974**	Louis de la Parte
		1974-76	Dempsey J. Barron
		1976-78	Lew Brantley
		1978-80	Philip D. Lewis
		1980-82	W. D. Childers
		1982-84	Curtis Peterson
		1984-86	Harry A. Johnston, II
		1986-88	John W. Vogt
		1988-90	Bob Crawford
		1990-92	Gwen Margolis
		1992-93	Ander Crenshaw
		1993-94	Pat Thomas
		1994-96	James A. Scott

From 1865 through 1887 the Lt. Governor served as President.

*Ext Session

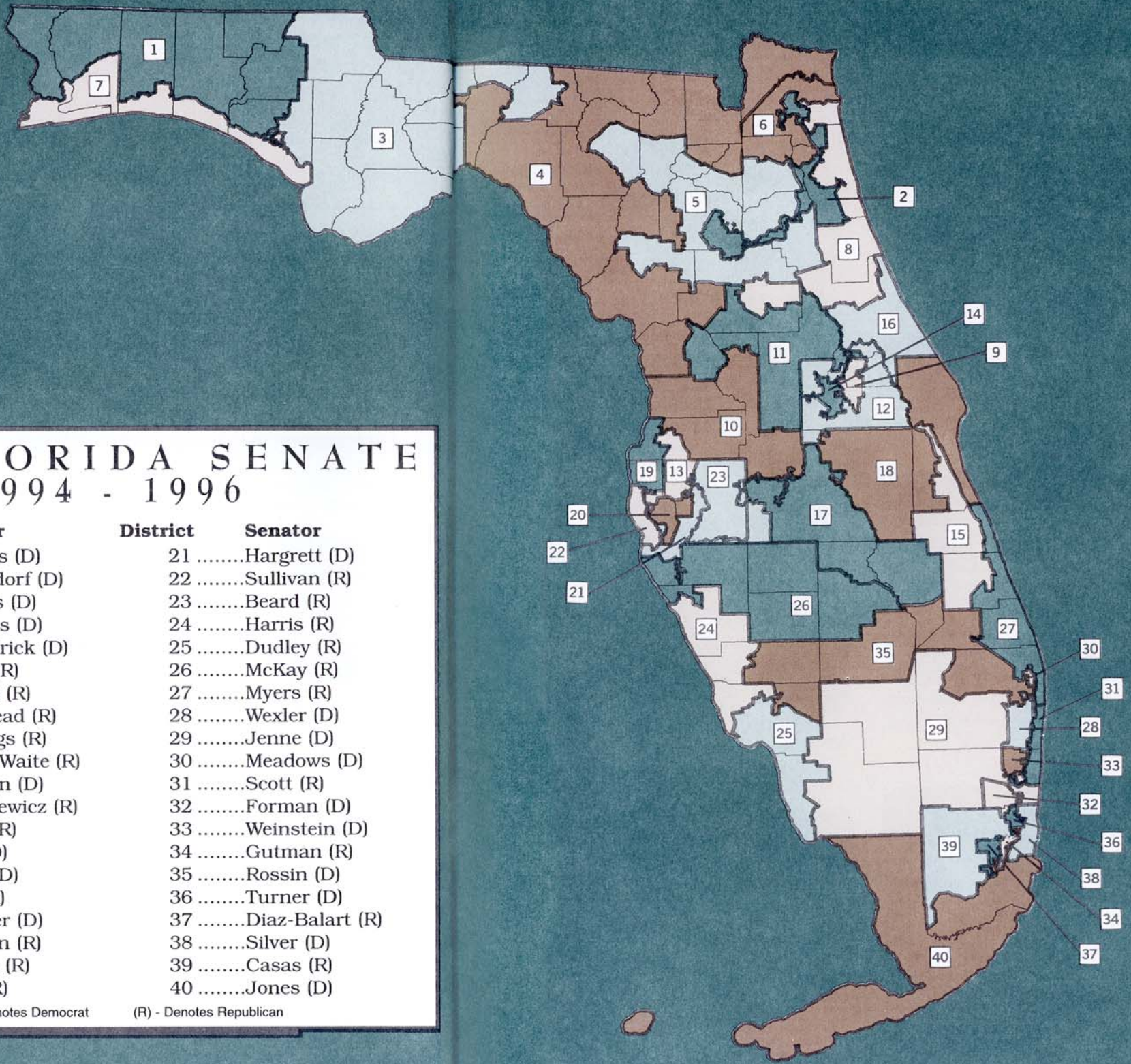
**Served as Acting President from July 1, 1974 when President Horne resigned until November 6, 1974

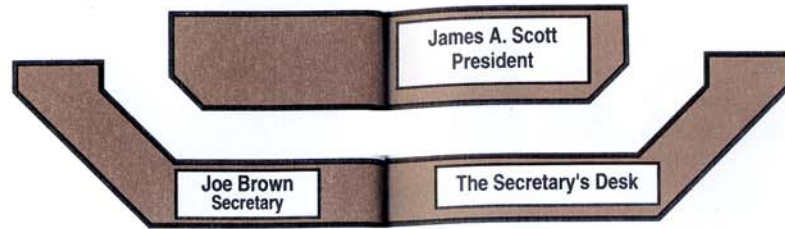
THE FLORIDA SENATE 1994 - 1996

District	Senator	District	Senator
1.....	Childers (D)	21.....	Hargrett (D)
2.....	Holzendorf (D)	22.....	Sullivan (R)
3.....	Thomas (D)	23.....	Beard (R)
4.....	Williams (D)	24.....	Harris (R)
5.....	Kirkpatrick (D)	25.....	Dudley (R)
6.....	Horne (R)	26.....	McKay (R)
7.....	Harden (R)	27.....	Myers (R)
8.....	Bankhead (R)	28.....	Wexler (D)
9.....	Jennings (R)	29.....	Jenne (D)
10.....	Brown-Waite (R)	30.....	Meadows (D)
11.....	Johnson (D)	31.....	Scott (R)
12.....	Ostalkiewicz (R)	32.....	Forman (D)
13.....	Grant (R)	33.....	Weinstein (D)
14.....	Dyer (D)	34.....	Gutman (R)
15.....	Kurth (D)	35.....	Rossin (D)
16.....	Burt (R)	36.....	Turner (D)
17.....	Dantzler (D)	37.....	Diaz-Balart (R)
18.....	Bronson (R)	38.....	Silver (D)
19.....	Latvala (R)	39.....	Casas (R)
20.....	Crist (R)	40.....	Jones (D)

(D) - Denotes Democrat

(R) - Denotes Republican





10
BROWN-WAITE
Brooksville

8
BANKHEAD
Jacksonville

6
HORNE
Orange Park

4
WILLIAMS
Live Oak

2
HOLZENDORF
Jacksonville

9
JENNINGS
Orlando

1
CHILDERS
Pensacola

3
THOMAS
Quincy

5
KIRKPATRICK
Gainesville

7
HARDEN
Fort Walton Beach

20
CRIST
St. Petersburg

18
BRONSON
Satellite Beach

16
BURT
Ormond Beach

14
DYER
Orlando

12
OSTALKIEWICZ
Windermere

29
JENNE
Ft. Lauderdale

13
GRANT
Tampa

15
KURTH
Palm Bay

17
DANTZLER
Winter Haven

19
LATVALA
Palm Harbor

30
MEADOWS
Ft. Lauderdale

28
WEXLER
Boca Raton

26
McKAY
Bradenton

24
HARRIS
Sarasota

22
SULLIVAN
Seminole

21
HARGRETT
Tampa

23
BEARD
Plant City

25
DUDLEY
Cape Coral

35
ROSSIN
West Palm Beach

11
JOHNSON
Leesburg

40
JONES
Miami

38
SILVER
North Miami Beach

36
TURNER
Miami Shores

34
GUTMAN
Miami

32
FORMAN
Pembroke Pines

31
SCOTT
Ft. Lauderdale

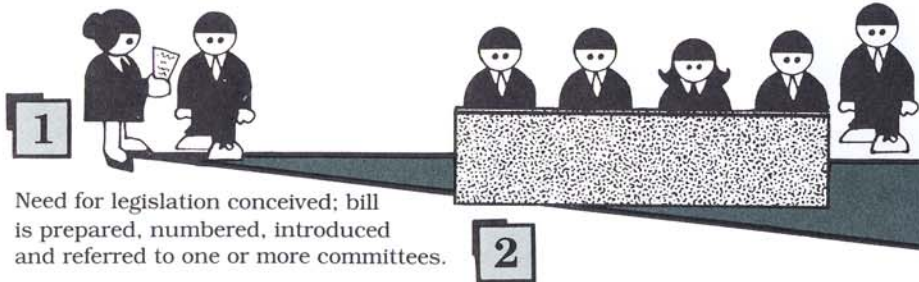
33
WEINSTEIN
Tamarac

27
MYERS
Stuart

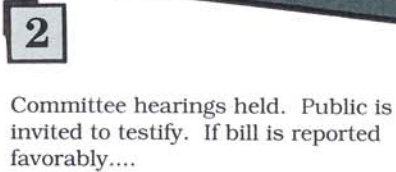
37
DIAZ-BALART
Miami

39
CASAS
Hialeah

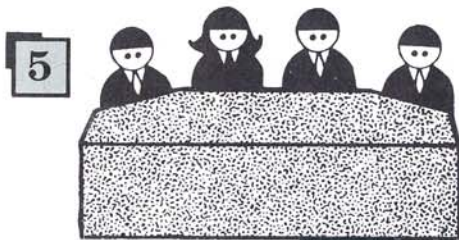
How a Senate Bill Becomes a Law



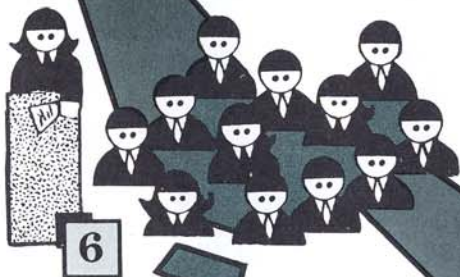
Need for legislation conceived; bill is prepared, numbered, introduced and referred to one or more committees.



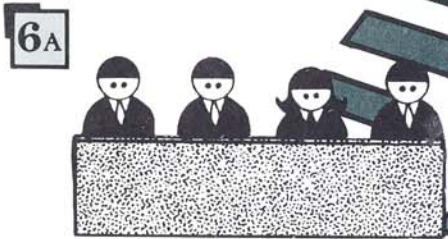
Committee hearings held. Public is invited to testify. If bill is reported favorably....



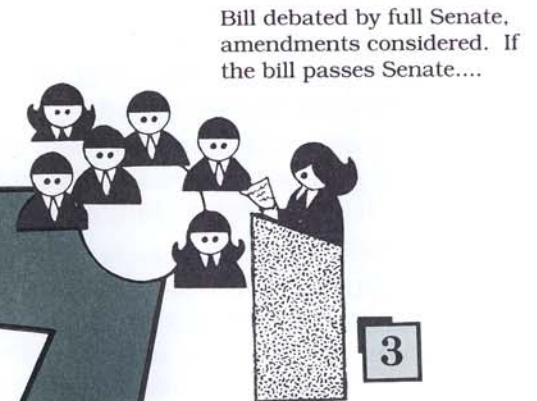
Committee hearings held. Public is invited to testify. If bill is reported favorably....



Bill debated by full House, amendments considered. If the bill passes House it becomes an Act and goes to Governor.



Conference committee. If the two houses cannot agree on a final bill, a conference committee works out a compromise and both houses then vote on the compromise. If compromise bill passes it becomes an Act and goes to Governor.



Bill debated by full Senate, amendments considered. If the bill passes Senate....



Bill goes to the House of Representatives where it is referred to one or more committees.

How a bill becomes a law

Bills may be introduced by one or more Senators or Representatives in their respective houses. When a Senate bill has been prepared, it is delivered to the Secretary of the Senate for introduction and is given a number. The bill is then read the first time by publication in the journal. It is referred to the appropriate committees, and the original copy is delivered to the chairman of the committee of first reference. The process continues as illustrated above.



To Governor for his approval or veto. If vetoed, 2/3 vote in each house overrides veto.

Three Branches of Government

Florida's Constitution, in the traditional American pattern of "separation of powers," divides the governmental structure of the state into three separate and independent branches.

The Legislative Branch has exclusive law-making power and determines the general policies by which the problems of society are to be met. It may delegate limited rule-making power to some executive agencies.

The Executive Branch, with the Governor as its chief, administers the laws made by the Legislature. The Cabinet--composed of the Secretary of State, Attorney General, Comptroller, Treasurer, Commissioner of Agriculture and Commissioner of Education--shares some executive power and responsibilities with the Governor.

The Judicial Branch interprets the law and applies the Constitution. The judiciary also presides over trials, although certain limited administrative disputes may be decided by executive agencies when authorized by law.

This structural division, faithfully maintained, sets up a system of "checks and balances" to ensure that all three branches properly perform their constitutional duties in the administration of state affairs.

The Legislative Branch

Composition and organization Florida's Legislature is composed of two houses, the Senate and the House of Representatives. Each house is the sole judge of the qualifications and elections of its members and has the power to choose its own officers and establish its own rules of procedure. All legislative sessions are open to the public, except sessions of the Senate when appointments or suspensions of public officials are considered. Either house of the Legislature may initiate legislation on any subject.

The state Constitution, adopted in 1968, provides that the Legislature shall be apportioned into not less than 30, nor more than 40, senatorial districts; and not less than 80, nor more than 120, representative districts. The Legislature met that mandate during the 1972 session when it established 40 Senate districts and 120 House districts and membership of each house has since remained at that same number. Senators serve four-year terms and representatives serve two-year terms.

Elections and qualifications

The Constitution requires that members of the Legislature be elected at the general election in November of even-numbered years. Party candidates are nominated in party primary elections held prior to the general elections. Members of the Legislature must be at least 21 years old, electors and residents of the district they represent, and Florida residents for two years prior to election.

Legislative sessions

Two weeks after each general election, the Legislature convenes for the exclusive purpose of organization and election of officers. Even though officers are formally elected during this organization session, they may have been previously designated by their respective party caucuses. No legislation is considered during the organization session.

Regular sessions of the Legislature begin on the first Tuesday after the first Monday in February in odd-numbered years and continue for sixty consecutive days. The Legislature may by law change its convening date in even-numbered years but generally leaves the date the same as odd-numbered years except once every 10 years when it deals with reapportionment.

Special sessions may be called by the Governor, or may be convened by joint proclamation of the President of the Senate and the Speaker of the House. Special sessions may not exceed twenty days, unless extended by a three-fifths vote of each house. Each "call" for a special session outlines the business to be considered. The Legislature may also be convened in extra session if three-fifths of the members of both houses agree. When in extra session, the Legislature may consider any subject as if convened in regular session, but an extra session is limited to thirty days. The President of the Senate may convene the Senate in special session to consider executive suspensions even when the House of Representatives is not meeting.

Committees

The committee is the heart of the legislative process, functioning to study, research, and plan solutions to "people problems." The Senate and House rules provide for certain standing committees, special or select committees, and subcommittees. The presiding officers name the chairmen and members of all committees.

Bills are assigned to one or more committees for study. In this preliminary screening the committees may hold public hearings where committee members hear sponsoring legislators and others

in the industry or profession, the governmental agency, or the general public, who are interested in the bill. The committee then votes to recommend the bill favorably, unfavorably, or favorably with amendments to be considered when the bill is debated on the floor by the full Senate.

When the Senate and House are unable to agree on the final content of a bill, it goes to a conference committee. This committee, composed of members of both houses, tries to resolve the differences between the Senate and House versions of a bill. The conference committee report must be approved by both houses.

Other committees commonly used are joint committees, which are composed of members from each house; and select committees, which are usually appointed to make recommendations on special or unique problems.

The Joint Legislative Management Committee supervises services which can be shared by both houses, thereby affording better facilities at a reduced cost. The Legislative Auditing Committee, another joint Senate-House committee, employs an Auditor General who audits governmental agencies.

Florida's Public Counsel is also an office of the Legislature. The Public Counsel represents Florida consumers in utility rate cases.

Administrative Procedures is another joint legislative committee. It reviews regulations passed by executive agencies based on Florida laws. ACIR stands for Advisory Council on Intergovernmental Relations and is also considered partly legislative.

Lobbying By definition a lobbyist is anyone who tries to influence legislation. Unless exempt, all persons who seek to influence legislation must register with the Joint Legislative Management Committee before they begin lobbying. Every lobbyist must also state any direct business association or partnership with any current member of the Legislature and make periodic reports on monies spent lobbying.

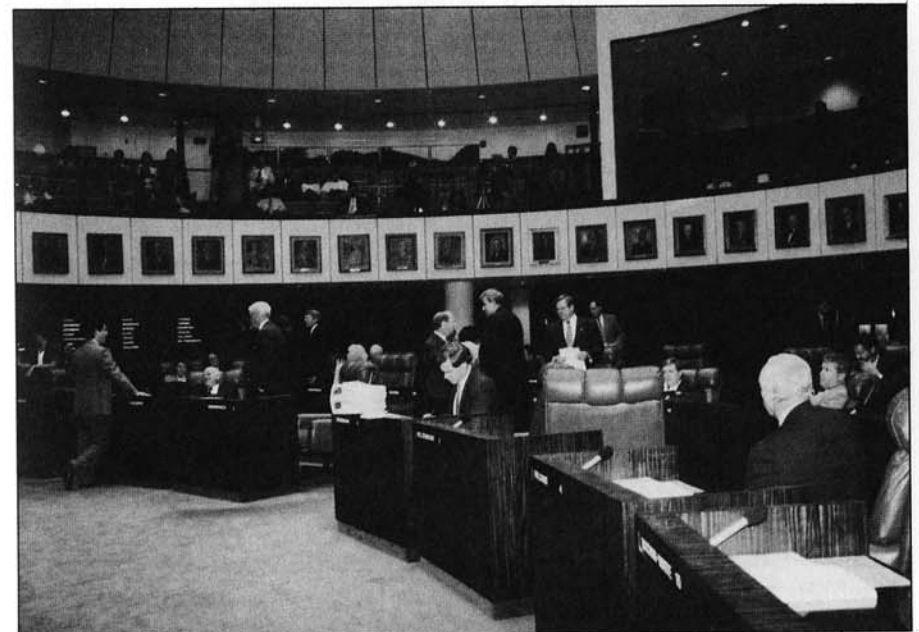
Forms of legislation Legislative proposals may be in the form of bills, resolutions, concurrent resolutions, joint resolutions, or memorials.

A bill is a proposed law, and it may be either a general bill or a local bill. A general bill would have a general impact within the state; a local bill would affect only a particular county, city, or town named in the bill. A majority vote is required to pass a bill.

A resolution expresses the opinion of one house of the Legislature, whereas a concurrent resolution expresses the opinion of both houses. A joint resolution is usually a proposal to amend the State Constitution, to apportion the Legislature, to set the effective date of a vetoed bill when the veto is overridden, or to recess for more than seventy-two hours. Resolutions, concurrent resolutions, and joint resolutions are passed by a majority vote, except that a three-fifths vote of the members of both houses is required to pass a joint resolution that proposes an amendment to the State Constitution.

A memorial is a petition addressed to the President of the United States, the Congress, or some official agency of the federal government. It requests action or expresses the Legislature's collective viewpoint and is passed by a majority vote.

Impeachments The Governor, Lieutenant Governor, members of the Cabinet, justices of the Supreme Court, and judges may be removed from office only by impeachment. The House of Representatives has the sole power to impeach, that is, to bring charges. The Senate then tries all impeachments, with the Chief Justice of the Supreme Court presiding. A two-thirds vote of the Senate is required to convict. If convicted, the officer is removed from office.



The Senate Chamber

Frequently before a session of the Senate convenes, senators can be seen scurrying "to the floor" or "to the chamber." They're headed for the modern room on the fourth floor of the Capitol where they debate the merits of proposed legislation. This is the fourth chamber used since the first session of the Senate was called to order in 1839. In 1978, the senators held their first session in this chamber.

On the floor above the chamber, and appearing to drop down into the chamber, is the gallery. Citizens may be seated in the gallery and may observe the Senate in session. From the gallery one's attention is drawn to the rostrum where the President is presiding.

The President occupies the "chair," pacing the flow of legislation, deciding who will speak, and ruling on parliamentary disputes. The President frequently calls on other members to preside while he works out the details of legislative proposals. If the President wishes to debate an issue before the Senate, he will vacate the chair and speak from his regular desk on the floor.

The portraits hanging below the gallery commemorate past Presidents of the Senate. After each President's two-year term a portrait is painted and hung in this area. The portraits are arranged in chronological order with the most recent one on the presiding officer's right. Since all spaces are now filled, each time the newest one is added, the oldest one is taken down and moved to the Old Capitol, keeping 100 years of past Presidents on display in the "new" chamber.

Just above the President, recessed into the ebony walls, is the screen for the video projection system which displays the text of proposed amendments as they are offered in debate. The display system is also used to welcome groups of visitors watching from the gallery. In the booth on the left side of the screen, computer operators record the Senate's actions into the legislative information network. The booth on the right houses the sound system operators.

In front of the President's rostrum is the Secretary's "desk," which is staffed by the Secretary of the Senate. Legislative business is not properly before the Senate until it is "on the desk." Clerks at this desk read the bills and amendments before

the body and record Senate actions. These actions are published in the journal, the official record of Senate proceedings. The video system and the voting boards are also operated from this desk. A senator who wishes to "approach the well" to make a speech on a particularly important matter speaks from one of the reading podiums at the secretary's desk.

Voting boards on each side of the chamber record a member's green "yea" or red "nay" votes. (The yellow lights you see by some names aren't caution lights or indications that a senator can't decide how to vote. They're signals that the senator wants a "page" to deliver a message or retrieve a file from his office, and you can be sure that one of the blue-blazered messengers will be at the senator's desk shortly.) The voting boards also display the number of the bill or amendment being debated and other information related to the proceedings. Electronic voting was first used in the Senate in 1966, and now nearly all votes are recorded electronically.

The seating arrangement in the chamber is determined by district number. Senators from odd-numbered districts sit on the President's left, and those representing even-numbered districts sit on the right. There are exceptions to this tradition. The chairman of the Committee on Rules and Calendar sits in the first seat to the President's left in the front row. The President Pro Tempore is seated to the President's right in the front row. With these exceptions, the seats are arranged numerically. The front row numbers are single digit, the second row all teens, the third row in the twenties and the back row holds the thirties and number 40.

At one time, the chamber desk was a member's only desk. Their secretaries sat beside them in the chamber, frequently even during sessions. Often a senator would interrupt a letter he was dictating to rise and speak on a bill, then return to his correspondence after he had his say. Now adequate office space is provided for the senators and their staff; telephones at each chamber desk provide direct communication with the staff. Today, only members of the Senate and designated staff members are allowed in the chamber while the Senate is in session. Certain present and past state officials and guests invited by the President may also enter the chamber during a session. All men in the chamber must wear coats and ties.

Senators are addressed by their district number when they are

recognized to speak. Custom decrees that a senator may not be addressed as a gentleman or lady, as are members of the House of Representatives. He or she is "the senator from the thirty-fifth," for example, but never "the gentleman or lady from the thirty-fifth." During debate, the members are always formally addressed as "senator," not by their given names.

In the room at the right rear of the chamber, staff attorneys draft "floor amendments" to bills being debated. The caucus room at the left rear is frequently used for quick conferences of senators, often with their colleagues from the House of Representatives. Just over the main entrance is the press gallery, where members of Florida's press corps record history. The remainder of the gallery is open to the public at all sessions, except that a portion of the gallery is usually reserved for the senators' families and other sections are often reserved for visiting students.

Television cameras from Florida Public Broadcasting are positioned at the front and rear of the gallery to televise all Senate sessions. Each weekday evening during the session, public television stations broadcast "Today in the Legislature," a one-hour program summarizing legislative action during the day. The broadcasts are funded by the Legislature, but all editorial content is determined by the group of professional journalists who produce the programs. Florida's legislative telecasts were used as a model for a similar system installed in 1979 in the U.S. House of Representatives.



1995 Session Dates

March	3	12:00 noon, deadline for filing request for drafts of general bills, <u>including requests for companion bills</u>
March	7	Regular Session convenes
March	10	5:00 p.m., deadline for filing bills for introduction
April	5	5:00 p.m., deadline for filing resolutions for introduction
April	25	50th day—last day for regularly scheduled committee meetings
May	5	60th day—last day of Regular Session

1996 Session Dates

March	1	12:00 noon, deadline for filing request for drafts of general bills, <u>including requests for companion bills</u>
March	5	Regular Session convenes
March	8	5:00 p.m., deadline for filing bills for introduction
April	3	5:00 p.m., deadline for filing resolutions for introduction
April	23	50th day—last day for regularly scheduled committee meetings
May	3	60th day—last day of Regular Session

NOTES

ABOUT THE FLORIDA SENATE HANDBOOK

This handbook is distributed free of charge to Capitol visitors and other interested Floridians to enhance their knowledge and understanding of Florida's government, and particularly, the Florida Senate.

You will note that the booklet is also splashed with photos of the Senate in action. The front cover shows the old and new Florida Capitols, along with the Senate building (left). The back cover composite features official Florida symbols: including the Florida panther, sabal palm, orange blossom, porpoise, largemouth bass, moonstone, horse conch, agatized coral, mockingbird, coreopsis and the seals of the Senate and State.

One of the primary jobs of Florida's Senate and government is the conservation and preservation of the natural resources of our state. As part of that goal, this booklet is printed on recycled paper.

The Florida Senate handbook is published by the Secretary of the Senate with a special thanks this year to Paulette Grimaldi Lowry, who designed the booklet and produced all the graphics; and Shirley Joyce and Norma McKee who were responsible for the text.



10%
TOTAL RECOVERED FIBER
ALL POST-CONSUMER FIBER