

DIVISION OF ADMINISTRATIVE HEARINGS

Presentation to:

Senate Appropriations Subcommittee on General Government



Robert S. Cohen, Director and Chief Judge

February 12, 2013



DOAH Mission:

To provide a uniform and impartial forum for the trial and resolution of disputes in an efficient and timely manner.

ADJUDICATION OF DISPUTES

- Authorized by Chapter 120, F.S.
- Resolves disputes between private citizens and organizations and agencies of the state.
- Jurisdiction includes professional licensure, child support, paternity, Medicaid waiver, Baker Act cases and Senate Claim bills.

WORKERS' COMPENSATION APPEALS

- Authorized by Sections 440.25 and 440.45, F.S.
- Resolves disputes between workers and their private or public employers arising from job-related injuries.
- Jurisdiction includes withholding child support arrearages from workers' compensation settlements.

* Per Section 120.65, Florida Statutes, the Division of Administrative Hearings is administratively attached to the Department of Management Services (DMS), but is not subject to the control, supervision, or direction by DMS in any manner, including, but not limited to, personnel, purchasing, transactions involving real or personal property, and budgetary matters.

ADJUDICATION OF DISPUTES PROGRAM

➤ ORGANIZATION

65 FTE:

- 1 Director and Chief Judge
- 1 Deputy Chief Judge
- 31 Administrative Law Judges
- 32 Staff

➤ LOCATION

This program is located in Tallahassee. The Administrative Law Judges travel or utilize video teleconferencing to conduct hearings throughout Florida.

➤ FY 13-14 BASE BUDGET: \$8,066,033

- 100% Trust Funded
- Only 5% of the agency's budget supports administrative activities.
- Funded through transfers from state agencies, contracts with outside entities, and an administrative assessment from the Workers' Compensation Appeals Program.

WORKERS' COMPENSATION APPEALS PROGRAM

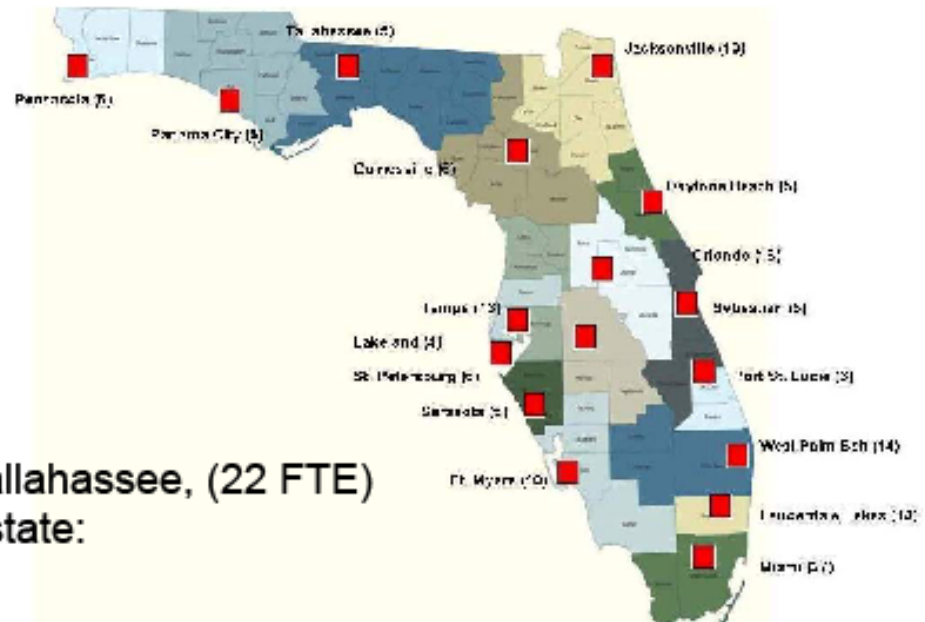
➤ ORGANIZATION

177 FTE:

- 1 Deputy Chief Judge
- 31 Judges of Compensation Claims
- 28 Mediators
- 117 Staff

➤ LOCATION

This program's headquarters are in Tallahassee, (22 FTE) with 17 district offices throughout the state:

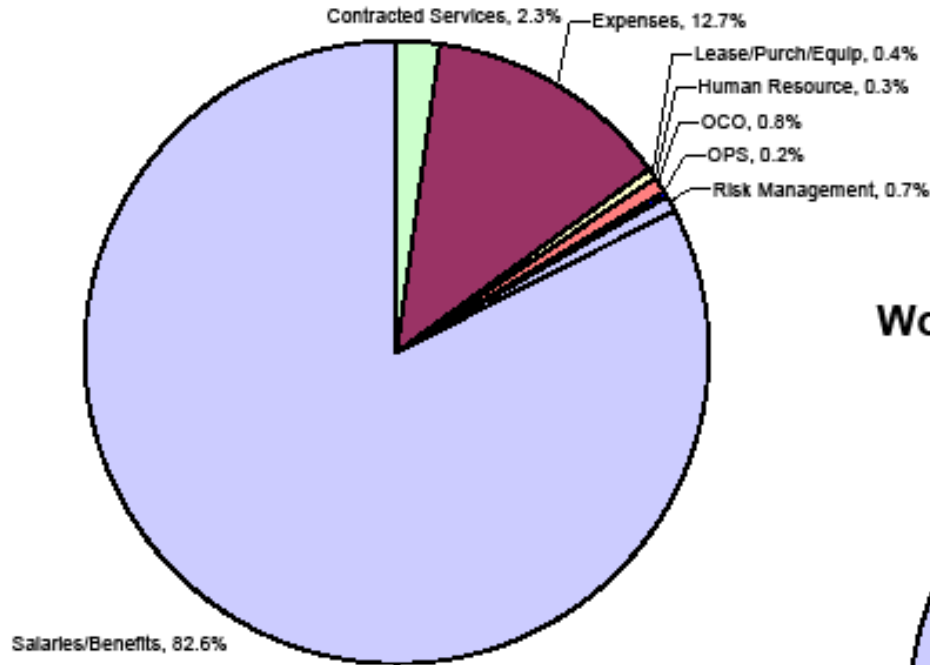


➤ FY 13-14 BASE BUDGET: \$16,346,980

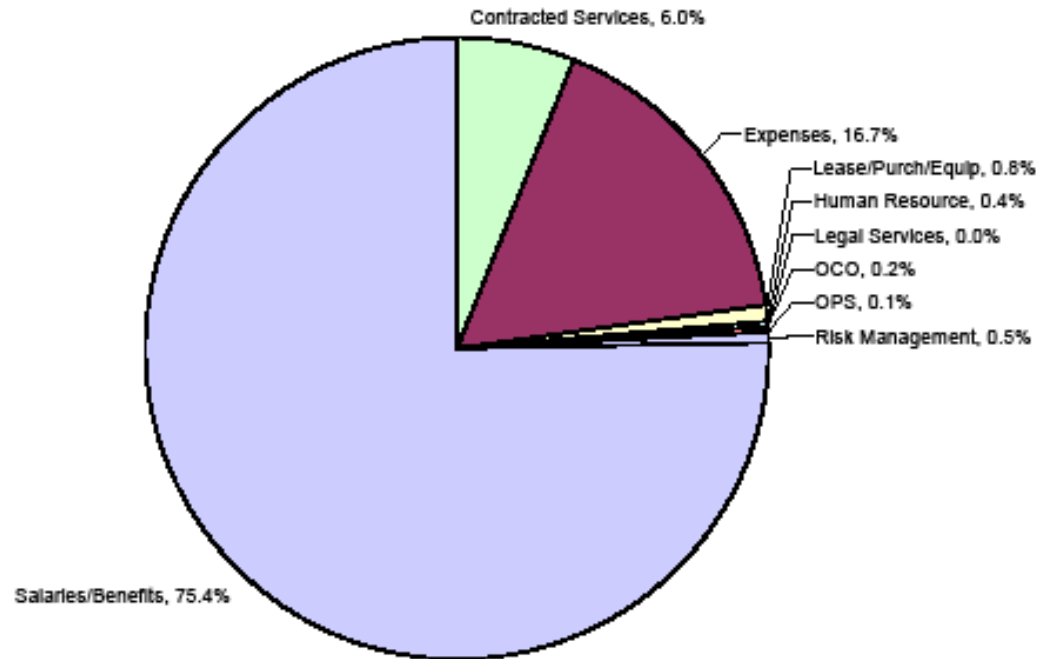
- 100% Trust Funded
- Funded through transfers from the Workers' Compensation Administration Trust Fund (WCATF), of the Department of Financial Services. The WCATF is supported by a 1.68 percent assessment rate on insurance premiums.

FY 13-14 BASE BUDGET BY CATEGORY

Adjudication of Disputes Program



Workers' Compensation Appeals Program



DIVISION OF ADMINISTRATIVE HEARINGS 5 YEAR FUNDING HISTORY

