

The Florida Senate  
**COMMITTEE MEETING EXPANDED AGENDA**

**EDUCATION PRE-K - 12**  
**Senator Simon, Chair**  
**Senator Calatayud, Vice Chair**

**MEETING DATE:** Wednesday, October 15, 2025  
**TIME:** 1:30—3:00 p.m.  
**PLACE:** *Pat Thomas Committee Room, 412 Knott Building*

**MEMBERS:** Senator Simon, Chair; Senator Calatayud, Vice Chair; Senators Berman, Burgess, Davis, Gaetz, Osgood, and Yarborough

---

TAB	BILL NO. and INTRODUCER	BILL DESCRIPTION and SENATE COMMITTEE ACTIONS	COMMITTEE ACTION
1	Presentation and panel discussion on artificial intelligence in K-12 education Dr. Maya Israel, Professor, College of Education, University of Florida Hillsborough County Schools Miami-Dade County Schools Pinellas County Schools	Presented	

---

Other Related Meeting Documents

---



# AI in K-12 Education: Implications for Florida

October 15, 2025

Maya Israel, Ph.D.

# Agenda

- **What do we mean by AI in education?**
- **Use of AI in Education**
  - Opportunities
  - Benefits and Risks
- **A few studies to set the stage**
- **What are we doing:**
  - The Florida K-12 AI Task Force
- **Questions**

# What do we mean by AI?

Machine based systems that simulate tasks typically requiring human intelligence including:

- Recognizing patterns
- Making Predictions
- Creating content
- Generating recommendations

**Human oversight guide AI, even as these systems tackle increasingly sophisticated tasks.**

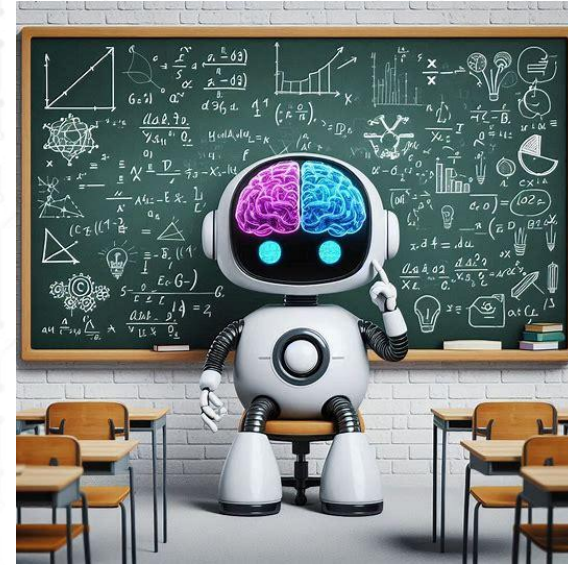
([OECD, 2024](#); [FL K-12 AI Task Force](#))

# Human Learning vs. Machine Learning



Human Learning

AI Prompt: A human learning



Machine Learning

AI Prompt: A machine learning

# Simple Example: Recognize the difference between chihuahuas and muffins?



# Classify chihuahuas and muffins



Karen Zack shows that with a quick glance, muffins and chihuahuas look more alike than you think @teenybiscuit

# University of Florida: AI Initiatives

Goal: Advancing AI for learning, research, economic advancement, and societal good

- **AI Infrastructure:** Strategic partnerships and investments in the HiPerGator supercomputer, faculty, and advanced education resources
- **AI across the curriculum:** Preparing students for careers that leverage AI
- **Research & Innovation:** Advancing AI in health, agriculture, education, medicine, engineering, etc.





# What do we mean by AI Literacy in K-12?

- Understanding how AI works
- Using AI safely and responsibly
- Understanding the pros and cons
  - Including benefits and risks of using AI
- Recognizing outcomes of using AI on our learning, mental health, way of seeing ourselves as learners, etc.

# Why AI in K-12?

# Teaching with AI

- Using AI to:
  - Streamline school management and operations
  - Support teaching
  - Personalize and enhance learning

# Teaching About AI

- Building students' understanding of
  - How AI works
  - How it can shape everyday life
  - How to use AI to be creators and problem solvers in the current and future workforce

# What AI Can Do in Education?



Real-time  
adaptation



Data driven  
feedback



Scalable  
individualized  
support

# Uses of AI in K-12 Education Examples

- Supporting instruction examples
  - Formative feedback tailored to students
  - Identify misconceptions through advanced analytics
  - Reading level adjustments
  - Interactive scenarios
  - Draft rubrics
  - Formative assessment

# Benefits and Risks

## Benefits

Differentiated pacing, student engagement

Rapid updates, differentiated materials, scalable resources

Saves teachers time, reduces administrative burden

Personalization

Content Generation

Automating routine tasks

## Risks

Privacy concerns, misuse of data, over reliance on AI for decision making

Quality control, copyright, standards misalignment

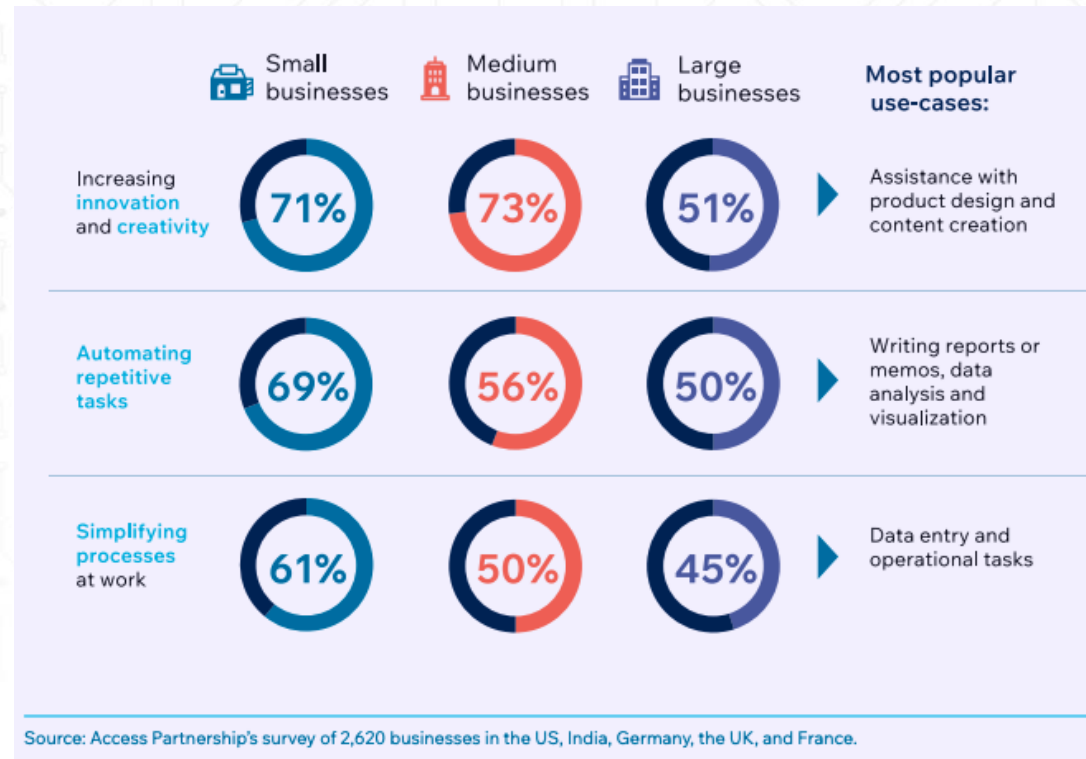
Potential errors, lack of transparency

# Let's look at a few studies.....

# LinkedIn/Access Partnership Study (April 2025)

- How is AI impacting the global economy (US, Germany, India, UK, and France)
- AI used to increasing innovation, automating tasks, and simplifying processes

[Study Link](#)





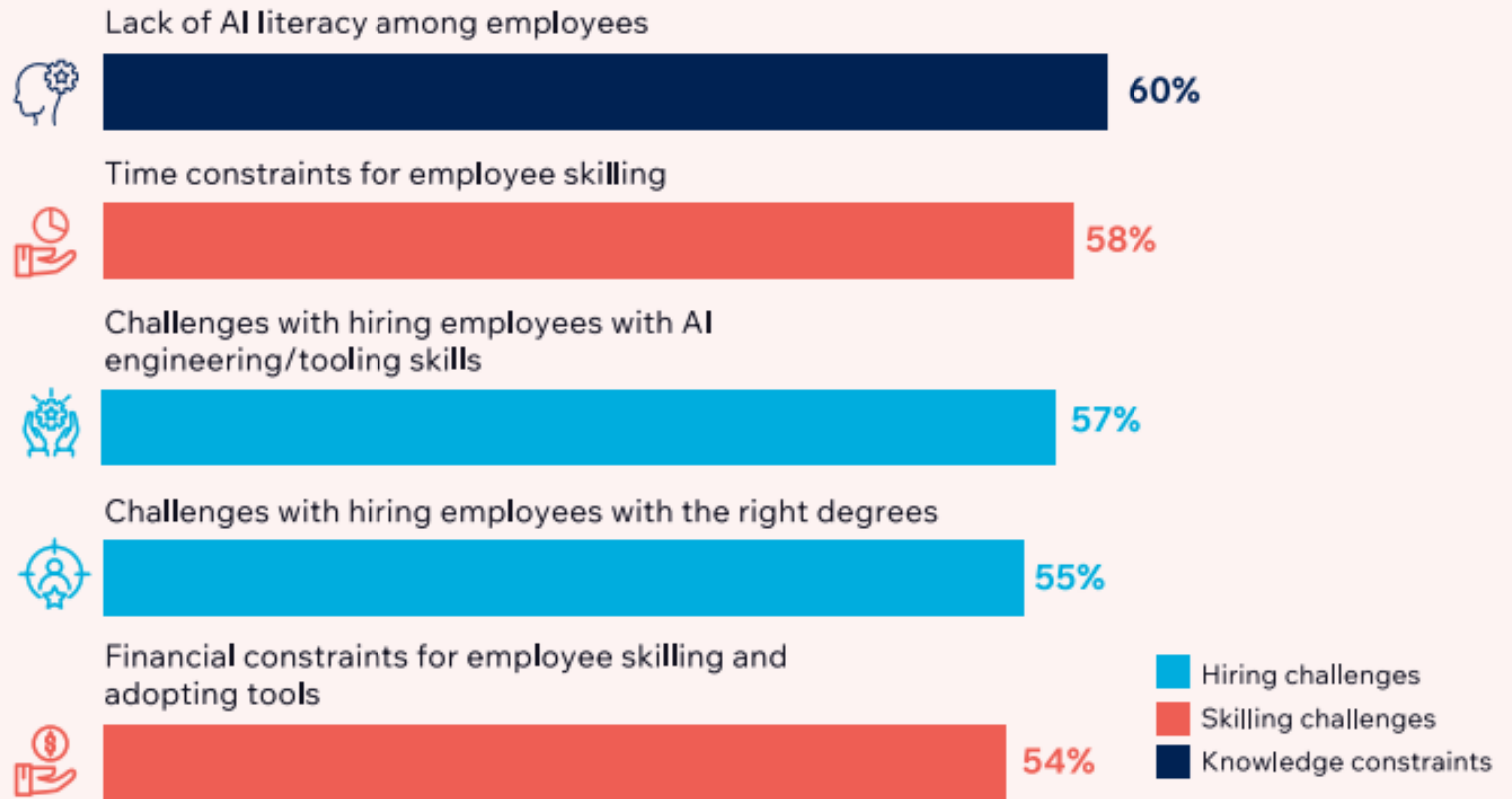
# Hiring Challenges

57% report challenges hiring employees with AI-related skilled

[Study Link](#)

**Exhibit 16: Businesses face various workforce planning barriers to adopting generative AI, from skilling and hiring challenges to knowledge constraints**

*Barriers to adopting generative AI, Percentage of businesses, %*



# Adult study of AI Usage

## Method:

- Analysis of public discourse primarily from Reddit forums

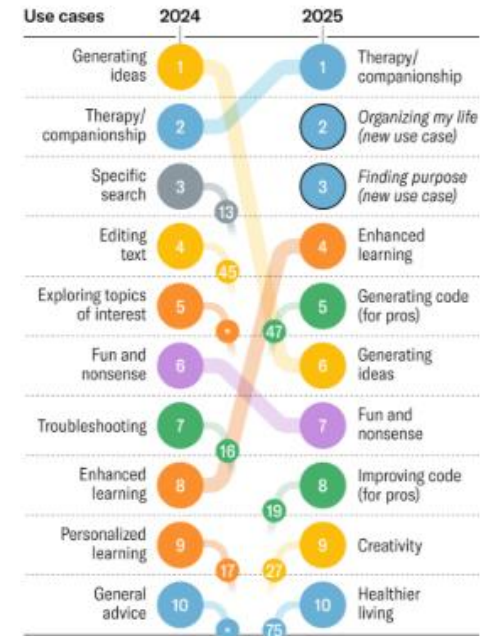
## Top areas AI is used for:

- Therapy/companionship
- Organizing life
- Enhance learning
- Technical assistance
- Creativity and recreation

## Top 10 Gen AI Use Cases

The top 10 gen AI use cases in 2025 indicate a shift from technical to emotional applications, and in particular, growth in areas such as therapy, personal productivity, and personal development.

### Themes



\*Did not make list of top 100 in 2025  
Source: Filtered.com

# Student Perspectives on AI

Digital Education Council (DEC) Global AI Student Survey of 3,800 students across 16 countries

## Key Findings

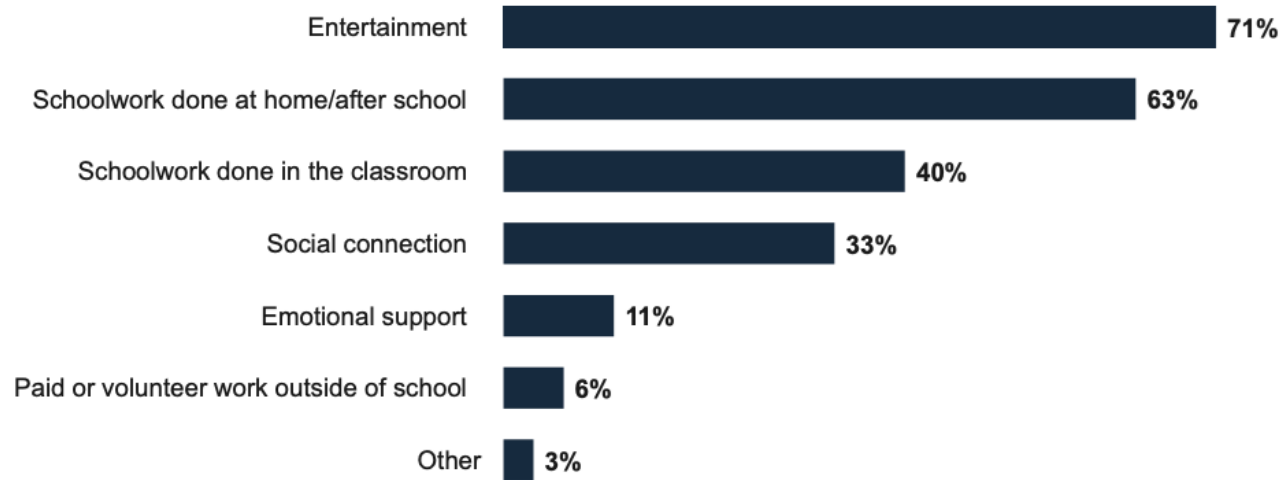
- Nearly 90% of students globally are using AI in their education
- ~ 58% of students report that they feel like they DO NOT have enough AI related skills and knowledge.
- ~ 50% of students worry that over-reliance on AI will negatively impact their academic performance.

[Article link](#)

# Students are using AI

Most AI users are using the tools for entertainment and schoolwork.

*For what purpose did you use these tools?*



4-H / Hart Research (Feb 2024)



# What are teachers using AI for?

- Supporting students with learning differences
- Generating quizzes and assessments
- Adjusting content
- Generating lesson plans
- Generating assignments

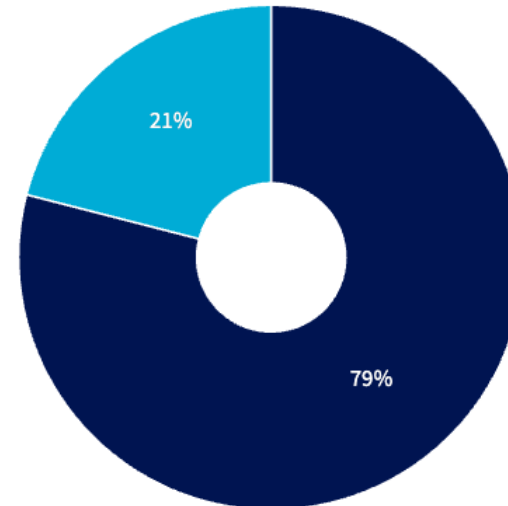
# Teacher Perspectives

- In a survey of 924 teachers, nearly 80% of teachers state their school districts do not have clear policies on AI in education ([EdWeek, February 2024](#))

## How clear are your district's AI policies? Not very.

My district has made its policies about using AI products such as ChatGPT clear to educators.

■ Disagree  
■ Agree



\*Results show responses from teachers, principals, and district leaders  
SOURCE: EdWeek Research Center survey, December 2023



\* A Flourish chart

# So what should we do?



Florida K-12 AI Education

# **TASK FORCE**

## **Supporting Florida Schools in Guiding AI Usage**



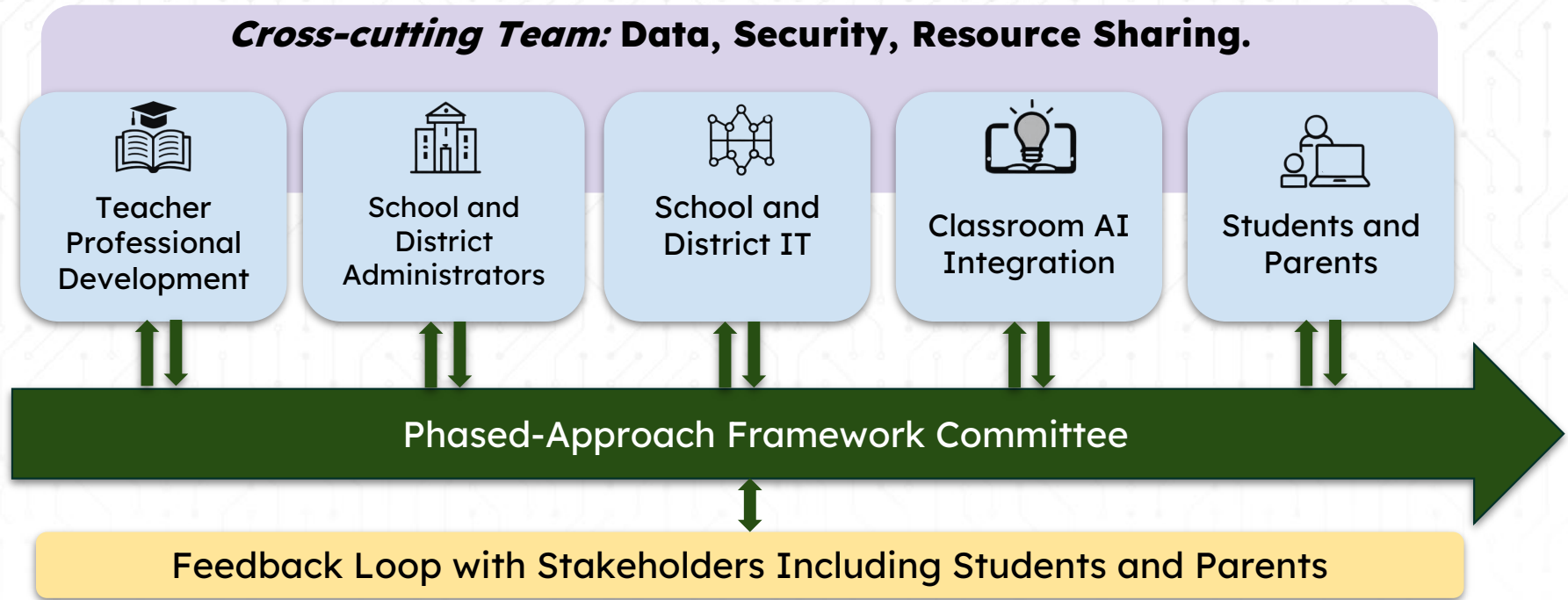
# Our goals:

**Every student in Florida has access to high quality education with well-prepared teachers who know how to leverage AI responsibly**

**Students are safe & savvy digital citizens who strategically use AI to support their learning**



# Our FL Guidelines Dev Process



# Who's Involved

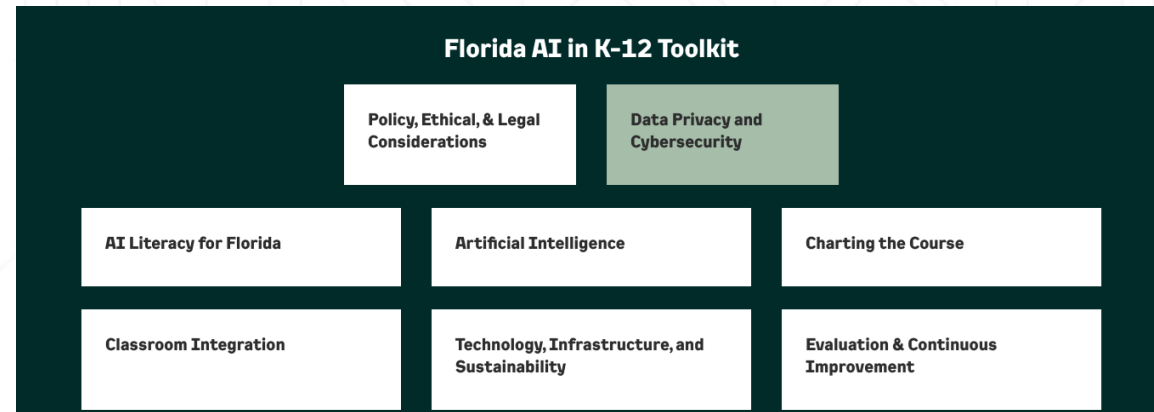
# Partners & Stakeholders (and Growing...)

Industry	School Districts (Including Charter / Independent Schools)	University & Colleges	Educational Organizations/Consortia
<ul style="list-style-type: none"> <li>• Academica</li> <li>• Google</li> <li>• Microsoft</li> <li>• Lenovo</li> <li>• Dade Tech Solutions</li> <li>• Ki Furniture</li> <li>• Accingo</li> <li>• ETC Network</li> <li>• VEX Robotics</li> <li>• Unlocking Education</li> <li>• Power Schools</li> </ul>	<ul style="list-style-type: none"> <li>• Broward County Public Schools</li> <li>• Charter Schools USA</li> <li>• Charlotte County Public Schools</li> <li>• Citrus County School District</li> <li>• Clay County School District</li> <li>• Duval County Schools</li> <li>• Escambia County Public Schools</li> <li>• Flagler County Schools</li> <li>• <b>Hillsborough County Public Schools</b></li> <li>• Indian River School District</li> <li>• Leon County School District</li> <li>• Marion County Schools</li> <li>• <b>Miami-Dade County Public Schools</b></li> <li>• Orange County Public Schools</li> <li>• Palm Beach County School District</li> <li>• PK Yonge Developmental Research School</li> <li>• <b>Pinellas County School District</b></li> <li>• St. Andrews School</li> <li>• St. Johns County Public Schools</li> <li>• Walton County School District</li> </ul>	<ul style="list-style-type: none"> <li>• University of Florida</li> <li>• Miami-Dade College</li> <li>• Tallahassee State College</li> <li>• University of South Florida</li> </ul>	<ul style="list-style-type: none"> <li>• Heartland Educational Consortium</li> <li>• Panhandle Area Educational Consortium</li> <li>• North East Florida Educational Consortium</li> <li>• Florida School Board Association</li> <li>• Florida Virtual Schools</li> <li>• Florida Association of District School Superintendents</li> <li>• STEM2Hub</li> </ul>

# Key Guidance Areas

<https://fl-aitaskforce.org/>

- Policy, ethical, and legal considerations
- Data privacy and cybersecurity
- AI literacy in Florida
- Charting the course
- Classroom integration
- Technology, infrastructure, and sustainability
- Evaluation and continuous improvement



# Key Updates Coming Soon

- Webinars
- School district case studies
- AI tool survey to districts
- Teaching tips
- Parent/family resource pages



# AI and Teacher Professional Learning

# UF Approaches

- Integrating AI literacy/readiness into teacher preparation courses
- Microcredentials
- Teacher professional development
- Florida and national outreach



# K-12 AI Education Microcredentials

1. Introduction to AI (Starts October 14 2025)
2. AI for the Educator (AI4Ed): Leveraging AI To Best Support Your Practice
3. K-12 AI Education (AI-Ed): AI Literacy for the K-12 Learner
4. AI in CS K-12 Integration
5. **\*AI Ethics & Compliance Module**



# Questions followed by District Perspectives



**Hillsborough County**  
**PUBLIC SCHOOLS**  
Preparing Students for Life



# Artificial Intelligence

## HCPS Status and Success

FL Senate Education Pre-K-12 Committee

10/15/2025



# Safe Use of Artificial Intelligence

# GenAI Governance Council Timeline

Summer/Fall  
2024

- Formed AI Governance Council
- Researched State and County Guidance
- Innovate K12 survey of all 5<sup>th</sup>, 8<sup>th</sup>, 11<sup>th</sup>, and 12<sup>th</sup> grade students, teachers and all district staff

Winter  
2024/2025

- Met with Superintendent Student Advisory Committee
- Conducted School Board Workshop to seek guidance
- District Staff gain micro credentials on implementation of GenAI

Spring  
2025

- Presented updated policy language to School Board
- Planned Summer PL
- Joined UC Berkeley Cohort for AI Learning

Summer  
2025

- Board Policy Adopted, June 2025
- Two Summer AI Learning Summits
- AI SharePoint for Resources
- Released AI Implementation Guide to provide clear guidance on using AI

Fall  
2025

- Continued partnership with Superintendent Student Council
- Pilot Enhanced Tutoring Agents
- Pilot GenAI Productivity
- Design of Teacher and Student AI Academies

# School Board Policy 2130: Emerging Technology



## Human Centric Belief

Emerging technologies will serve as a tool to support, not replace, human interactions in education and district operations, ensuring that teachers, students, and staff remain at the center of learning and decision-making.



## Universal Access

Emerging technologies will be accessible to all students and staff across all district operations, empowering personalized learning and enhancing operational efficiency.



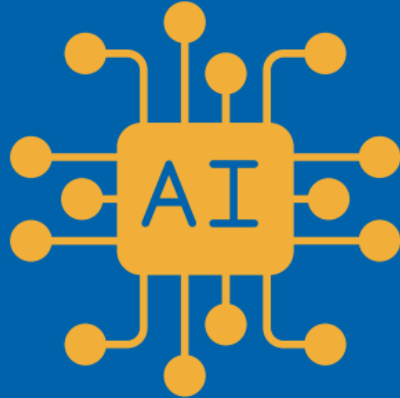
## Responsible Use

The implementation of emerging technologies will prioritize transparency, safeguard data privacy, and align with the HCPS standards of academic integrity for students.

Hillsborough County Public Schools

# Artificial Intelligence Implementation Guide

September 2025  
Version 4.0



University of Florida is an ongoing partner in the development of the HCPS Implementation Guide.

The guide covers:

- Foundations of AI
- Process of Policy Development
- Guidelines for Teachers, Students, and all Employees
- Grade Use Parameters



# HCPS Grade Level AI Use Parameters

## Pre-Kindergarten through Seventh Grade

Students below the 8th grade are prohibited from accessing GenAI tools on school devices or networks, with the exception of district-approved educational tools that incorporate AI technology (e.g., Amira Learning).

Although teachers may choose to utilize GenAI tools in the classroom for instruction or demonstration purposes, *students below the 8th grade shall have no direct, unsupervised access to the technology on HCPS networks or devices.*



### I can ...

- Learn about AI through discussion and teacher demonstration.
- Access AI-powered educational tools based on class assignments (e.g. Amira learning)



### I cannot ...

- Access or use GenAI chat tools such as Microsoft CoPilot within Edge or non-vetted district AI-powered educational tools.



## 8th Grade and Above

Students in 8th grade and above may access GenAI tools for approved educational purposes under the following conditions:

- **Teacher Permission:** Students must receive prior approval from their teacher outlining the permitted educational task(s) for use of GenAI .
- **Responsible and Ethical Use:** Students must use GenAI responsibly at all times, adhering to all district digital citizenship usage policies and the Academic Integrity Expectations within the HCPS Student Code of Conduct.



I can ...

- Access GenAI tools with teacher permission using District vetted applications only.



I cannot ...

- Access GenAI tools without teacher approval for each use.
- Use GenAI in a way that violates data privacy, academic integrity, or district digital citizenship expectations.
- Access GenAI for personal or non-educational purposes on school devices or networks.

# Teaching and Learning

# Decreasing Student Reliance on AI

## Level 1 – No AI

- Students may not use AI at any point in the assignment. They must demonstrate core skills and knowledge.

## Level 2 – AI Planning

- Students may use AI to plan, develop ideas, and research. The final submission should show how ideas have been developed and refined.

## Level 3 – AI Collaboration

- Students may use AI to assist with specific tasks such as drafting text or refining work. Students must critically evaluate and modify any AI generated content.

## Level 4 – Full AI

- Students may use AI extensively throughout their work either independently or guided. Focus is on directing AI to achieve goals while demonstrating critical thinking.

## Level 5 – AI Exploration

- Students should use AI creatively to solve the task or problem, potentially co-designing new approaches with the teacher or other students.

# Maintaining Student Cognitive Growth

## **Recognize that AI can Make Mistakes**

- Students must always verify responses.

## **Strategically Allow Student AI Use**

- According to MIT studies, to minimize cognitive debt students should write with their brain, then use AI to edit their drafts.

## **Require Students to Document their Process**

- Metacognition and Knowledge Retention improve when students document their prompts, and how AI responds differently across their prompting experiences.

# CTE Courses, Enrollment Numbers, and Certification

- Hillsborough County Public Schools currently offers the first two courses in the AI Foundations program:

- Semester 1 *AI in the World*
- Semester 2 *Applications of AI*

*These courses are offered at* seven high schools and Stewart Middle Magnet (for high school credit). This represents significant growth from just one school offering these courses two years ago.

Schools that begin with these courses are able to expand into *Procedural Programming and Foundations of Machine Learning* for second- and third-year students, creating a three-year AI pathway.

## 23-24 First Year

- **1 School**
  - 2 Sections



## 24-25 Certification Outcomes

- **3 Schools** (64 Students) – 22 Certifications
  - 7 – Microsoft Azure AI Fundamentals
  - 9 – PMI Project Management Ready
  - 5 – CIW User Interface Design
  - 1 – CIW Artificial Intelligence

## Current School Year

- **8 Schools**
  - 22 Sections
  - Over 600 students

# CTE Courses, Enrollment Numbers, and Certification

- In addition, the FLDOE recently approved the **Middle School AI Frameworks (Fundamentals of Artificial Intelligence)** program
- Consists of two semester courses:
  - *Exploring Artificial Intelligence*
  - *Applying Artificial Intelligence*
- Our middle schools will be able to begin offering these courses next year, with Stewart Middle Magnet already expressing interest in adoption. This creates a strong pipeline from middle to high school, ensuring students build early exposure and skills that align with industry needs and future career pathways.



# CTE Courses, Enrollment Numbers, and Certification



Post Secondary AI in Hillsborough County Public Schools

## **Erwin Technical College offers a 10-month Cloud Computing and Virtualization program**

- Integrates training in cloud, AI, automation, cybersecurity, and DevOps
- Current post-secondary enrollment: 20
- Partnered with a global tech company that hired almost the entire 24-25 graduating class
- Students gain real-world, employer-ready skills AND opportunities for certifications
- Industry certifications earned include:
  - Microsoft Azure Fundamentals
  - AWS
  - AWS AI
  - Azure AI
  - Oracle AI

## **Graduate Career Roles:**

- Linux Systems Engineer
- Cloud Engineer
- DevOps Engineer
- Containerization Specialist
- Data Analyst

# Professional Learning & Partnerships



# Professional Learning Plan

## Available Now

- Self-Paced Introductory Course
- Quick-learns focused on specific pedagogical uses of AI/GenAI

## Upcoming

- Regional Collaborations
- AI Teacher Academies (USF/Microsoft)



# AI Training Data – Since 06/01/2025

## Summer Learning Summits

375 Attendees  
Partner with USF

AI in Pedagogy  
Magic School AI  
Microsoft Copilot

## One Hour Quick-Learns

562 Attendees

Pedagogical  
Aligned  
Approach

### Learning Topics

- Boosting Productivity
- Classroom Management
- Differentiating Learning
- Enhancing Accessibility
- Enhancing Data Analysis
- Engaging Lessons
- Effective Prompting
- Formal/Informal Assessment
- Lesson Planning
- Project Based Learning
- Stakeholder Communication



# PL Continued - Summer 2026

## Teacher AI Academies

- Partnership with USF, Microsoft, and other AI Partners
- 800-1000 Teachers
- Four-Day Event Leading to Teacher AI Credential
- Attendees bring knowledge and skills back to their campus to serve as experts



# Partnerships in Professional Learning

## University of South Florida

- Partnership with Microsoft to design Teacher AI Credential
- Upcoming Teacher AI Academies
- College of Education AI Advisory Council Membership
- CyberBay 2025 - Inaugural Conference



# Partnerships in Professional Learning

## Magic School AI

- June 2025 AI Teacher Summit
- Piloting Teacher Use
- Site Trainings and Ongoing Webinars
- Partner for Teacher Microcredentials

Since June 1, we've seen an increase in users and generations

**117% increase in Users**

1,933 → 4,206

**56% increase in Generations**

55,662 → 87,062



# Partnerships in Professional Learning

## Microsoft

- Copilot is the recommended Large Language Model in HCPS
- Partnership with Microsoft to design Teacher AI Certification
- Upcoming Teacher AI Academies
- Piloting M365 Copilot with School Leaders, six Pilot Schools, and District Staff





Hillsborough County

PUBLIC SCHOOLS

Preparing Students for Life



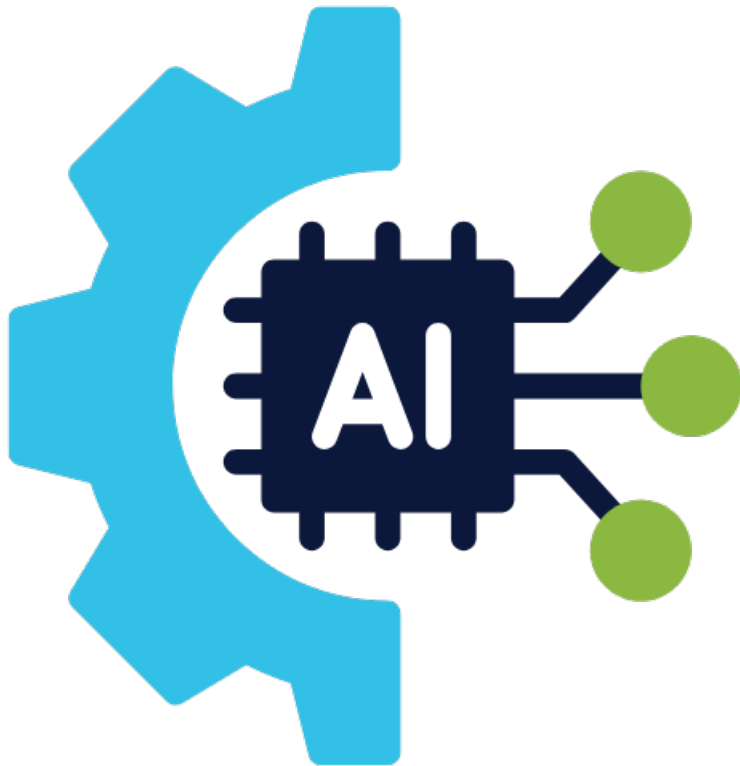
# **Powerful Pathways for AI in Pinellas County Schools**

**Kevin K. Hendrick, Superintendent**

**October 15, 2025**



# AGENDA



- **Key Challenges**
- **Strategic Opportunities**
- **Safe and Responsible Use**
- **Teaching AI Literacy**
- **Future-Ready**



# KEY CHALLENGES = STRATEGIC OPPORTUNITIES

- Ensuring **ACADEMIC INTEGRITY** through instructional innovation and shifts in assessment design
- Protecting **STUDENT DATA** through responsible AI use with district-approved platforms
- Enhancing **STUDENT ENGAGEMENT** to empower students and staff with AI supported learning experiences



# TEACHING AI LITERACY - STAFF

## AI Literacy Professional Development for Educators

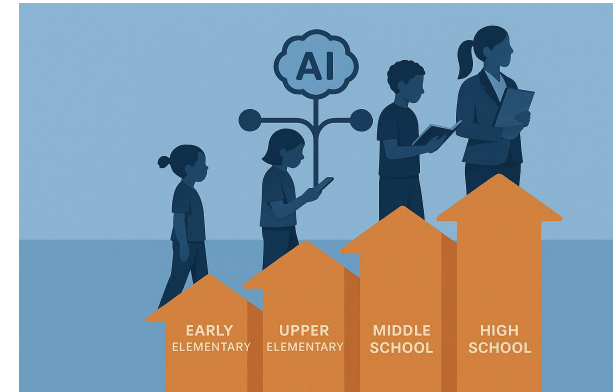


- Targeted training focused on AI tools and best practices aligned to district guidance
- AI Pathfinders Cohort
- AI Handbook (ethics and responsible use)
- Quick Guides and One-pagers



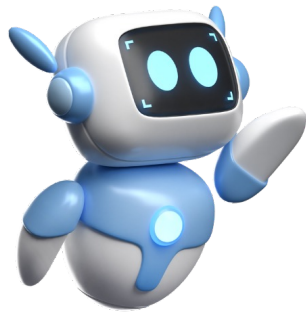
# TEACHING AI LITERACY - STUDENTS

- **Explicit Teaching of Digital Responsibility (K-12)**
- **AI Guidelines for Students**
- **AI Literacy Education for Students**
  - **Early Elementary – AI follows patterns, but is not human**
  - **Upper Elementary – protect personal information and question AI accuracy**
  - **Middle School – analyze for AI bias and misinformation**
  - **High School – critique AI impact on ethics, privacy, and careers (CTAE Pathway)**



# FUTURE-READY

## Bloom's Taxonomy Revisited



Created by Oregon State University

	Distinctive Human Skills	How GenAI Can Supplement Learning*
<b>CREATE</b>	Engage in both creative and cognitive processes that leverage human lived experiences, social-emotional interactions, intuition, reflection, and judgment to formulate original solutions	Support brainstorming processes; suggest a range of alternatives; enumerate potential drawbacks and advantages; describe successful real-world cases; create a tangible deliverable based on human inputs
<b>EVALUATE</b>	Engage in metacognitive reflection; holistically appraise ethical consequences of other courses of action; identify significance or situate within a full historical or disciplinary context	Identify pros and cons of various courses of action; develop and check against evaluation rubrics
<b>ANALYZE</b>	Critically think and reason within the cognitive and affective domains; justify analysis in depth and with clarity	Compare and contrast data, infer trends and themes in a narrowly-defined context; compute; predict; interpret and relate to real-world problems, decisions, and choices
<b>APPLY</b>	Operate, implement, conduct, execute, experiment, and test in the real world; apply human creativity and imagination to idea and solution development	Make use of a process, model, or method to solve a quantitative or qualitative inquiry; assist students in determining where they went wrong while solving a problem
<b>UNDERSTAND</b>	Contextualize answers within emotional, moral, or ethical considerations; select relevant information; explain significance	Accurately describe a concept in different words; recognize a related example; translate to another language
<b>REMEMBER</b>	Recall information in situations where technology is not readily accessible	Retrieve factual information; list possible answers; define a term; construct a basic chronology or timeline

# SAFE AND RESPONSIBLE USE OF AI

## PCS Ensures:

- Transparency
- Human Oversight
- Fairness and Access
- Data Privacy
- Accountability

## Oversight and Vetting:

- IT Governance Process
- Vendor Compliance
- PCS Digital Ecosystem
- Cybersecurity Protocols

## Process Alignment to:

- School Board Policies
- Student Code of Conduct
- FERPA/COPPA Compliance
- Florida's AI Task Force Guidance



## The right tool for the right job

# PCS DIGITAL ECOSYSTEM

Single sign on powered by Clever

### TOOLS FOR INSTRUCTION

- Canva
- Microsoft 365
- Nearpod
- Lumio by SMART
- Wayground (formerly Quizizz)
- Content-specific Tools
  - Amira (Istation), Dreambox, IXL etc.



### BEHIND THE SCENES

- FOCUS
- Outlook
- Performance Matters
- Professional Learning Network (PD)



### INDEPENDENT & COLLABORATIVE WORK

- Adobe Express
- Book Creator
- Canva
- Canvas LMS
- Digital Textbooks
- Microsoft 365



### HARDWARE TOOLS FOR TEACHING

- 2-in-1 Laptops
- iPads
- Interactive Projectors
- Document Cameras



### AI TOOLS FOR INSTRUCTION



- Wayground (formerly Quizizz)
- Amira (Istation) - Elementary
- Khan Academy Khanmigo - Secondary
- MagicSchool AI

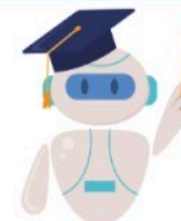
### INDEPENDENT & COLLABORATIVE INSTRUCTION



- Adobe Express - Firefly
- Canva Image Generator
- Khan Academy Khanmigo - Secondary

### AI BEHIND THE SCENES

- Canva - AI tools for teachers
- Microsoft 365 - CoPilot
- MagicSchool AI



# CTAE AI PATHWAY

Lakewood High School's Center for Advanced Technologies (CAT) Program is proud to be the first in Pinellas County to offer courses in Artificial Intelligence. With 112 students currently enrolled, the program developed in partnership with the University of Florida guides students through a comprehensive four-year AI curriculum.

## Course Titles

- Artificial Intelligence in the World
- Applications of Artificial Intelligence
- Procedural Programming
- Foundations of Machine Learning





## IN SUMMARY

AI is not here to replace our humanity; it's here to amplify.

Pinellas County Schools uses AI to spark curiosity, deepen learning, and empower every student and educator to thrive with integrity, creativity, and purpose to ensure 100% student success.



10/15/25

# The Florida Senate APPEARANCE RECORD

Meeting Date

Deliver both copies of this form to  
Senate professional staff conducting the meeting

Bill Number or Topic

Committee

Amendment Barcode (if applicable)

Name Kevin Hendrick

Phone 727-588-6011

Address 301 4th St. SW

Email hendrickk@pcsb.org

Street

Largo FL

City

State

Zip

Speaking:  For  Against  Information **OR** Waive Speaking:  In Support  Against

### PLEASE CHECK ONE OF THE FOLLOWING:

I am appearing without compensation or sponsorship.

I am a registered lobbyist, representing:

I am not a lobbyist, but received something of value for my appearance (travel, meals, lodging, etc.), sponsored by:

*While it is a tradition to encourage public testimony, time may not permit all persons wishing to speak to be heard at this hearing. Those who do speak may be asked to limit their remarks so that as many persons as possible can be heard. If you have questions about registering to lobby please see Fla. Stat. §11.045 and Joint Rule 1. [2020-2022 Joint Rules.pdf \(flsenate.gov\)](#)*

This form is part of the public record for this meeting.

S-001 (08/10/2021)

10/15/2028

Meeting Date

# The Florida Senate APPEARANCE RECORD

Deliver both copies of this form to  
Senate professional staff conducting the meeting

Bill Number or Topic

Committee

Amendment Barcode (if applicable)

Name

Van Ayres

Phone

813-766-4400

Address

901 E. Kennedy

Email

van-ayres@hops.net

Street

Tampa

FL

State

33602

Zip

Speaking:

For

Against

Information

**OR**

Waive Speaking:

In Support

Against

### PLEASE CHECK ONE OF THE FOLLOWING:

I am appearing without compensation or sponsorship.

I am a registered lobbyist, representing:

I am not a lobbyist, but received something of value for my appearance (travel, meals, lodging, etc.), sponsored by:

*While it is a tradition to encourage public testimony, time may not permit all persons wishing to speak to be heard at this hearing. Those who do speak may be asked to limit their remarks so that as many persons as possible can be heard. If you have questions about registering to lobby please see Fla. Stat. §11.045 and Joint Rule 1. [2020-2022 Joint Rules.pdf \(flsenate.gov\)](#)*

This form is part of the public record for this meeting.

S-001 (08/10/2021)

The Florida Senate

# APPEARANCE RECORD

10/15/2025

Meeting Date

Deliver both copies of this form to  
Senate professional staff conducting the meeting

Bill Number or Topic

Committee

Amendment Barcode (if applicable)

Name

Maya Israel

Phone

913-961-5890

Address

13685 NW 12<sup>th</sup> Place

Email

misrael@ufl.edu

Street

Newberry

City

FL

State

32669

Zip

Speaking:

For

Against

Information

**OR**

Waive Speaking:

In Support

Against

### PLEASE CHECK ONE OF THE FOLLOWING:



I am appearing without compensation or sponsorship.

I am a registered lobbyist, representing:

I am not a lobbyist, but received something of value for my appearance (travel, meals, lodging, etc.), sponsored by:

While it is a tradition to encourage public testimony, time may not permit all persons wishing to speak to be heard at this hearing. Those who do speak may be asked to limit their remarks so that as many persons as possible can be heard. If you have questions about registering to lobby please see Fla. Stat. §11.045 and Joint Rule 1. [2020-2022 Joint Rules.pdf \(flsenate.gov\)](https://www.flsenate.gov/legistics/2020/2020-2022-Joint-Rules.pdf)

This form is part of the public record for this meeting.

S-001 (08/10/2021)

The Florida Senate

APPEARANCE RECORD

Deliver both copies of this form to Senate professional staff conducting the meeting

Bill Number or Topic

Amendment Barcode (if applicable)

10/15/25

Meeting Date

(S) PreK-12

Committee

Director of

Name Drew Allen - FSU Inspire Phone (661) 810-9219

Address 4750 Collegiate Dr. Email dallen12@fsu.edu

Street

Panama City Florida 32405

City

State

Zip

Speaking: [ ] For [ ] Against [x] Information OR Waive Speaking: [ ] In Support [ ] Against

PLEASE CHECK ONE OF THE FOLLOWING:

[x] I am appearing without compensation or sponsorship.

[ ] I am a registered lobbyist, representing:

[ ] I am not a lobbyist, but received something of value for my appearance (travel, meals, lodging, etc.), sponsored by:

While it is a tradition to encourage public testimony, time may not permit all persons wishing to speak to be heard at this hearing. Those who do speak may be asked to limit their remarks so that as many persons as possible can be heard. If you have questions about registering to lobby please see Fla. Stat. §11.045 and Joint Rule 1. 2020-2022 Joint Rules.pdf (flsenate.gov)

This form is part of the public record for this meeting.

# CourtSmart Tag Report

Room: KB 412

Case No.:

Type:

Caption: Senate Education Pre-K Committee

Judge:

Started: 10/15/2025 1:31:27 PM

Ends: 10/15/2025 2:55:20 PM

Length: 01:23:54

1:31:28 PM Meeting called to order by Vice Chair  
1:31:30 PM Roll call by CAA  
1:31:40 PM Quorum announced  
1:31:45 PM Vice Chair Calatayud with opening comments and overview  
1:31:50 PM Senator Simon is attending virtually  
1:32:04 PM Tab 1 Presentation and Panel Discussion on Artificial Intelligence in K-12 Education  
1:33:27 PM Dr. Maya Israel, Professor in the College of Education at the University of Florida, presents  
1:50:54 PM Vice Chair  
1:51:01 PM Senator Burgess  
1:52:09 PM Dr. Israel  
1:54:52 PM Senator Burgess  
1:55:30 PM Dr. Israel  
1:56:09 PM Senator Burgess  
1:56:36 PM Dr. Israel  
1:57:03 PM Senator Osgood  
1:58:45 PM Dr. Israel  
2:01:37 PM Senator Osgood  
2:02:44 PM Dr. Israel  
2:03:34 PM Senator Gaetz  
2:05:05 PM Dr. Israel  
2:06:21 PM Senator Gaetz  
2:06:43 PM Dr. Israel  
2:07:18 PM Senator Gaetz  
2:07:25 PM Vice Chair  
2:07:33 PM Senator Berman  
2:08:24 PM Dr. Israel  
2:09:30 PM Vice Chair  
2:09:36 PM Superintendent Van Ayres, Hillsborough County Schools, presents  
2:22:32 PM Vice Chair  
2:22:43 PM Superintendent Kevin Hendrick, Pinellas County Schools, presents  
2:30:40 PM Vice Chair  
2:30:43 PM Senator Gaetz  
2:31:22 PM Superintendent Hendrick  
2:32:11 PM Senator Gaetz  
2:32:19 PM Superintendent Ayers  
2:32:52 PM Senator Davis  
2:33:29 PM Superintendent Hendrick  
2:34:31 PM Superintendent Ayers  
2:35:13 PM Senator Davis  
2:36:16 PM Vice Chair  
2:37:07 PM Superintendent Hendrick  
2:37:08 PM Superintendent Ayers  
2:38:17 PM Vice Chair  
2:38:26 PM Mr. Drew Allen, Executive Director, FSU InSPIRE Program, presents  
2:49:08 PM Vice Chair  
2:49:24 PM Senator Yarborough  
2:50:38 PM Mr. Allen  
2:52:35 PM Senator Davis  
2:53:35 PM Superintendent Hendrick  
2:54:08 PM Mr. Allen  
2:54:48 PM Vice Chair  
2:55:08 PM Senator Davis moves to adjourn

**2:55:12 PM** Meeting adjourned