

The Florida Senate
COMMITTEE MEETING EXPANDED AGENDA

AGRICULTURE
Senator Montford, Chair
Senator Dean, Vice Chair

MEETING DATE: Monday, January 5, 2015

TIME: 4:00 —6:00 p.m.

PLACE: 301 Senate Office Building

MEMBERS: Senator Montford, Chair; Senator Dean, Vice Chair; Senators Bullard, Galvano, Garcia, Grimsley, and Sobel

TAB		BILL NO. and INTRODUCER	BILL DESCRIPTION and SENATE COMMITTEE ACTIONS	COMMITTEE ACTION
1		Overview of the Department of Agriculture and Consumer Services given by Grace Lovett, Director, Office of Legislative Affairs		Presented
2		Presentation on Florida's Roadmap to Healthy Living given by Robin Safely, Director, Division of Food, Nutrition, and Wellness		Presented
Other Related Meeting Documents				

DEPARTMENT OF AGRICULTURE AND CONSUMER SERVICES

ADAM H. PUTNAM, COMMISSIONER

Senate Agriculture Committee
Senator Bill Montford, Chair

Department Overview
January 5, 2015



Florida Department of Agriculture and Consumer Services

Mission

Safeguard the Public and Support Agriculture

Goals

- Increase production and sale of Florida's agricultural products
- Ensure the safety and wholesomeness of food and other consumer products
- Conserve and steward the state's agricultural and natural resources
- Protect consumers from potential health and financial risks and unfair and deceptive trade practices



Divisions and Offices

The Florida Department of Agriculture and Consumer Services (FDACS) has 15 divisions and offices dedicated to providing services to the citizens of the state and administering the statutes enacted by the Florida Legislature. Those divisions and offices under the purview of the Senate Agriculture Committee are:

- Agricultural Environmental Services
- Animal Industry
- Aquaculture
- Florida Forest Service
- Food, Nutrition and Wellness
- Food Safety
- Fruit and Vegetable
- Agricultural Law Enforcement
- Marketing and Development
- Plant Industry
- Agricultural Water Policy

Other Divisions and Offices

not under the purview of this committee

Consumer Services

Licensing

Energy

Administration

Agriculture Technology Services

General Counsel

Policy and Budget



Agricultural Environmental Services

Mission: To protect agriculture, the public, and the environment from unsafe and unethical products and services used for agricultural production or for managing pests.

- Feed
- Seed
- Fertilizer
- Pesticides
- Mosquito Control
- Pest Control
- Emergency Response



Animal Industry

Mission: To serve as the guardian of the health of Florida's livestock and poultry industries and other animal populations.

- Surveillance
- Control & Eradicate Diseases
- Coordinate with Wildlife and Public Health Officials
- Rapid & Accurate Diagnostic Services
- Emergency Response



Aquaculture

Mission:
Supporting
aquaculture
production and
growth for
economic
development
while protecting
the environment.

- Provide Technical Assistance
- Water Quality Monitoring
- Oyster Reef Restoration
- Assess Resources



Florida Forest Service

Mission: To protect and manage the forest resources of the state, ensuring they are available for future generations.

- Forest Protection
 - Wildland fire prevention, detection, suppression and mitigation
- State Forest Management
- Forestry Management Assistance
- Technical Assistance
- Forest Health



Food, Nutrition and Wellness

Mission: To ensure that every child in Florida has access to a nutritious meal that is full of fresh fruits and vegetables and is educated on the importance of making healthy choices through outreach, partnerships, education, and oversight to ensure quality and compliance, training and technical assistance.

- National School Lunch Program
- School Breakfast Program
- After School Snack
- Summer Food Services Program
- Farm to School



Food Safety

Mission: To assure the public of a safe, wholesome and properly represented food supply.

Division staff proactively monitor food from farm gate through processing and distribution to the retail point of purchase.

- Food Establishment Inspections
 - Manufacturers, Processors, distributors, Retailers
- Laboratories
 - Only state lab fully devoted to food safety analysis
 - Focus is on microbiological and pesticide contamination



Fruit and Vegetables

Mission: To meet the needs of Florida's fruit and vegetables industries through fiscally responsible quality assurance and technical assistance services.

- Inspects
 - Citrus
 - Peanuts
 - Tomatoes
 - Avocados
 - Potatoes
- Implements the Tomato Good Agricultural Practices program on farms and in packing houses
- Verifies “grade” and condition of produce received by buyers (brokers)



Agricultural Law Enforcement

Mission: To enforce laws which threaten the overall security and safety of the state's agriculture industry.

- AgLaw manages 23 agricultural interdiction stations
- Enforce civil and criminal laws on property owned, managed by the department (state forests, FDACS facilities, etc.) and any criminal violation involving farms or farm equipment, animals/livestock, poultry, horticulture, aquaculture or citrus products.
- Agricultural Emergency Preparedness
- Florida's Domestic Marijuana Eradication Program.



Marketing and Development

Mission: To drive awareness and sales of Florida's commodities by developing and expanding marketing opportunities for Fresh from Florida products and to ensure fair trade practices to reduce financial risk to the state's agribusiness community.

- **Fresh From Florida**
- **Marketing, Trade and Promotion**
- **Awareness**
 - **Chef and Culinary Ambassador**
 - **Children, Parents and Minority Groups**
- **Preserving Agriculture's Legacy & Advocating its Future**



Plant Industry

Mission: To protect Florida's native and commercially grown plants and the state's apiary industry from harmful pests and diseases

- First Line of Defense
- Exotic Invasives
- Fruit Fly Eradication
- Citrus Health Response Program
- Honeybee hive location, managed beekeeping
- Outreach
- Natural Solutions



Agricultural Water Policy

Mission: To help ensure the future of Florida Agriculture while preserving the state's natural resources

- Water Supply
- Mobile Irrigation Labs
- Water Quality Criteria
- Best Management Practices
- Regulatory Streamlining





QUESTIONS?

**DEPARTMENT OF AGRICULTURE
AND CONSUMER SERVICES**

ADAM H. PUTNAM, COMMISSIONER

Department Overview
January 5, 2015

Grace Lovett, Director
Office of Legislative Affairs
850.617.7700
Grace.Lovett @freshfromflorida.com

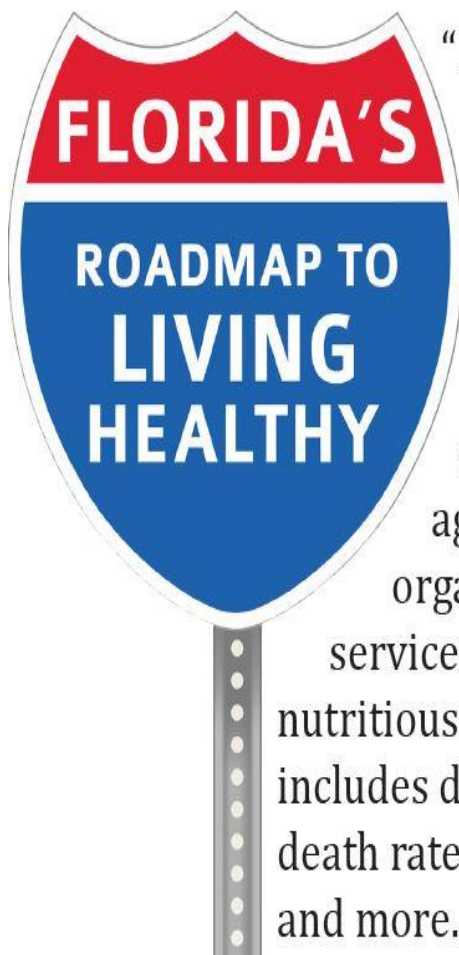


Florida's Roadmap to Living Healthy

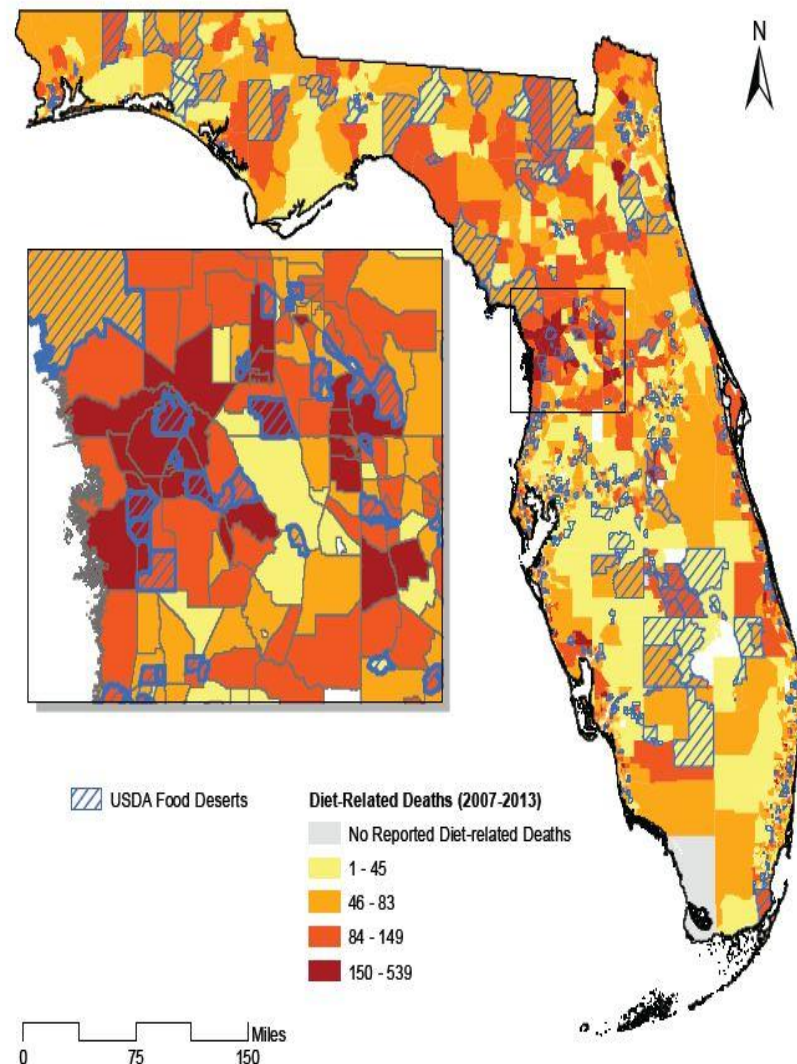
Division of Food, Nutrition and Wellness
Robin Safley, Director
Senate Agriculture Committee
January 5, 2015



FLORIDA'S ROADMAP TO LIVING HEALTHY



"Florida's Roadmap to Living Healthy" is a new way of looking at information about health and nutrition in our state. The map uses GIS technology to visualize data. It can help government agencies, nonprofits and other organizations identify gaps in services and improve access to nutritious food. The interactive map includes data on Florida's food deserts, death rates from diet-related illnesses and more.



www.FreshFromFlorida.com/RoadmapToHealth

Florida's Roadmap to Living Healthy

- This interactive, online map overlays:
 - food deserts
 - SNAP households
 - nutrition-related diseases
- The map also shows community-based assets:
 - food banks
 - food pantries
 - farmers markets
 - child nutrition programs
 - federally-qualified health centers
 - school performance



Florida's Roadmap to Living Healthy

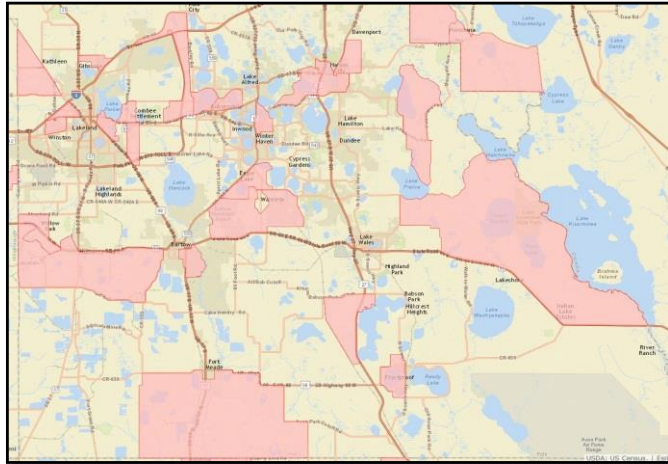
New Data Services

- Senior Feeding Programs
- Head Start Centers
- Medically Underserved Populations/Areas
- TRF Limited Supermarket Access Data
- CDFI Fund Investment Areas (i.e. BEA Distressed Communities & New Markets Tax Credit Low-Income Communities)
- CFPB Rural and Underserved Counties
- Unemployment Rates
- CareerSource Florida Centers

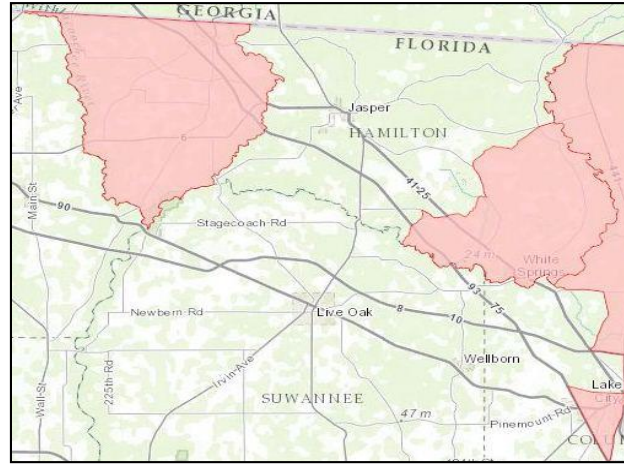


Florida's Roadmap to Living Healthy

USDA Food Deserts



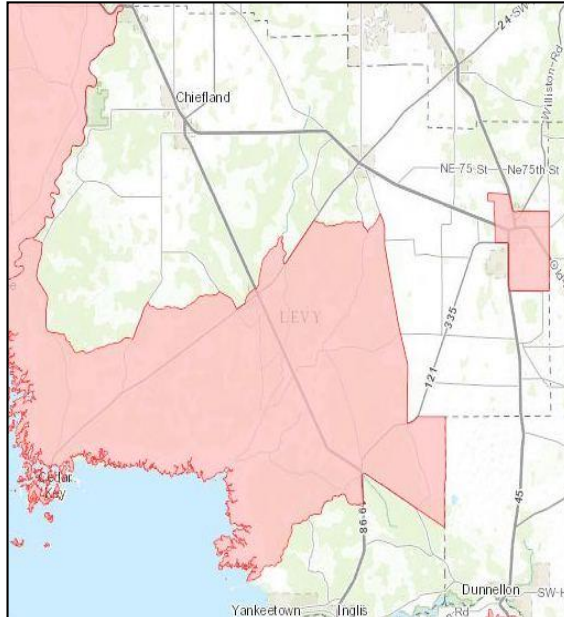
Polk County



Hamilton County



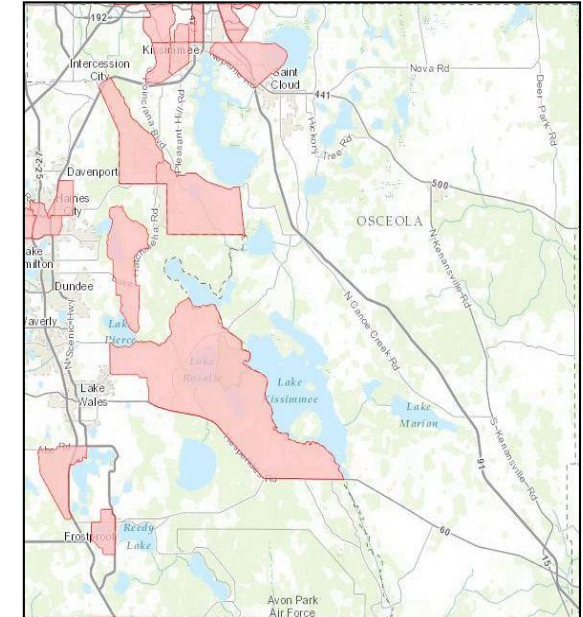
Gadsden County



Levy County



Pinellas County

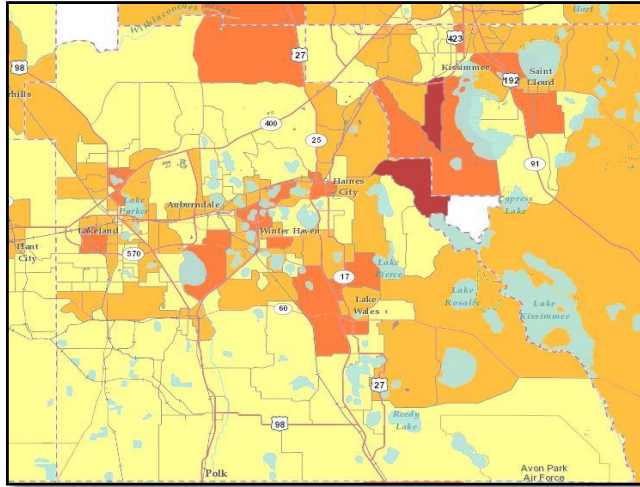


Osceola County

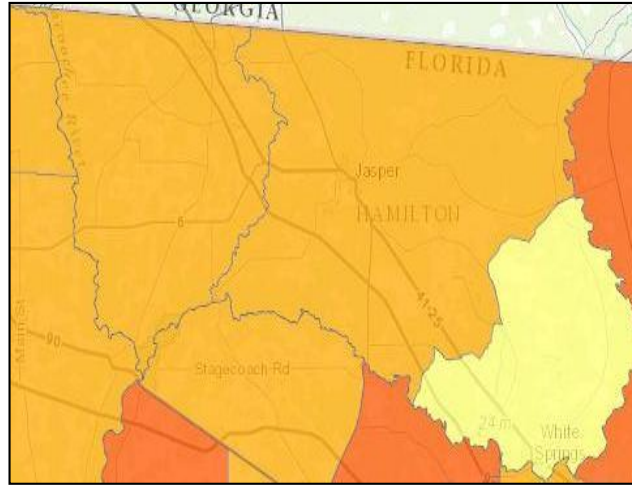


Florida's Roadmap to Living Healthy

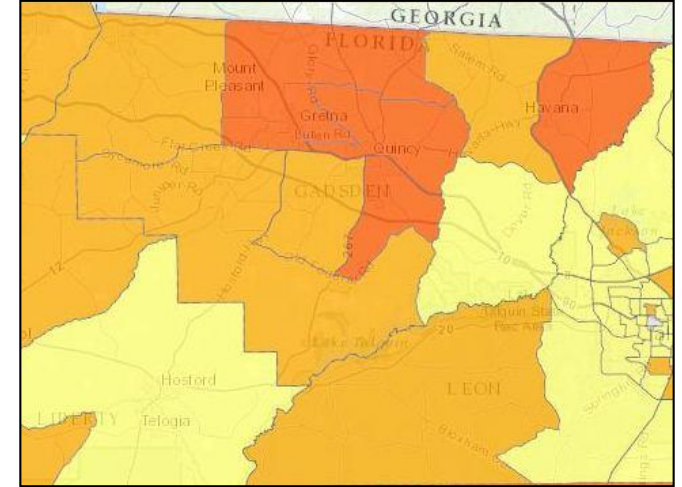
Diet-Related Deaths



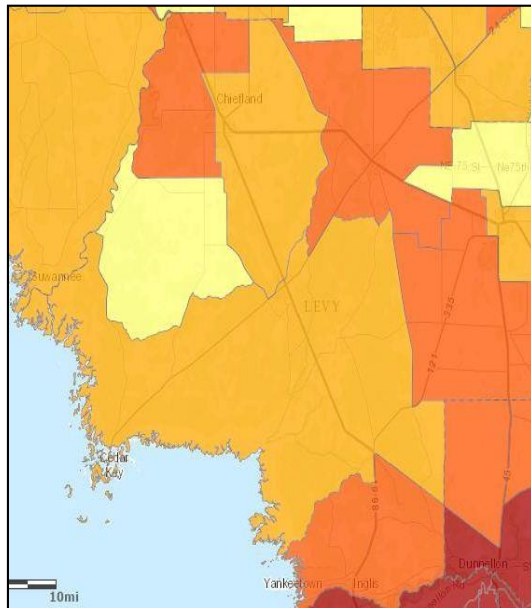
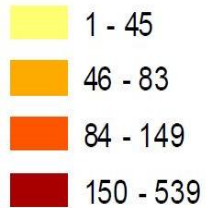
Polk County



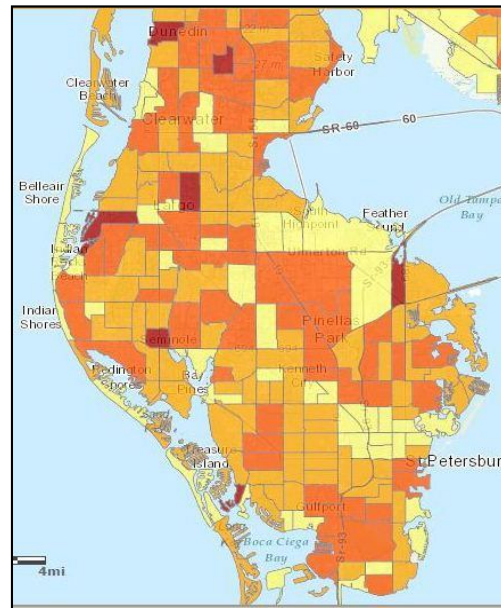
Hamilton County



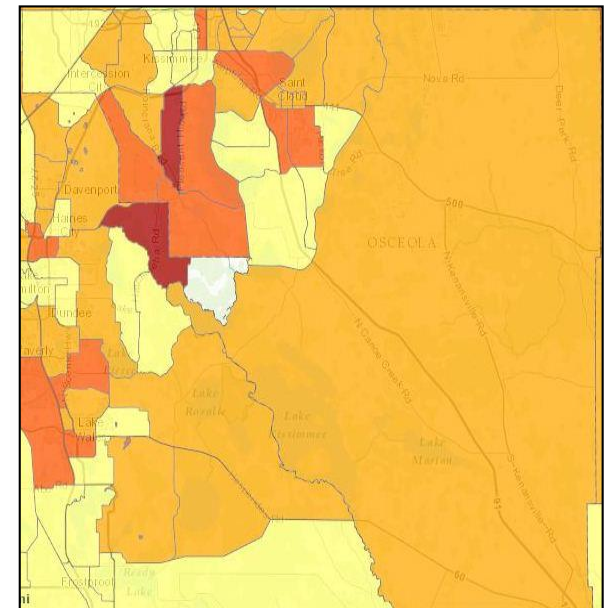
Gadsden County



Levy County



Pinellas County

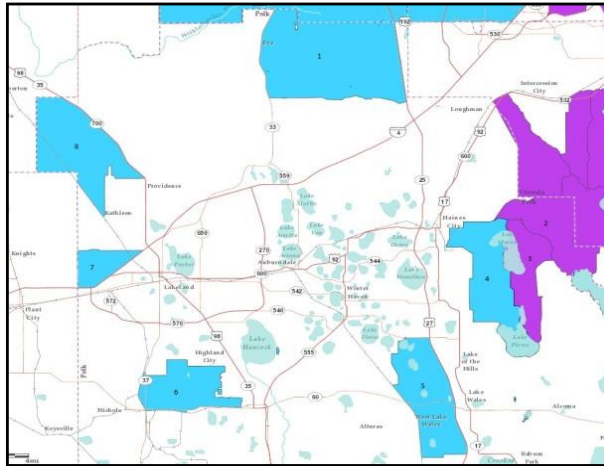


Osceola County

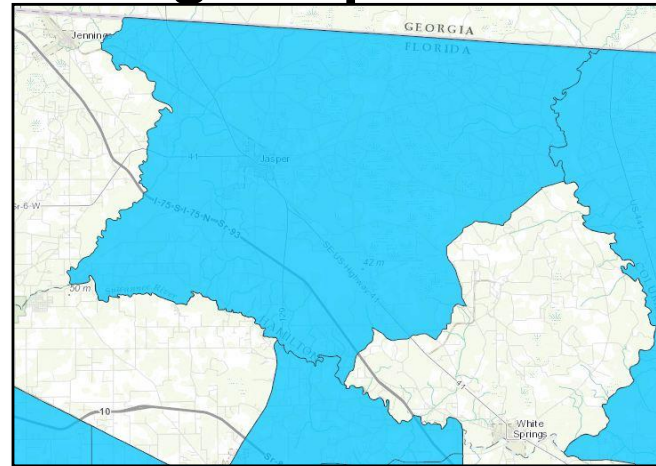


Florida's Roadmap to Living Healthy

High-Impact Tracts



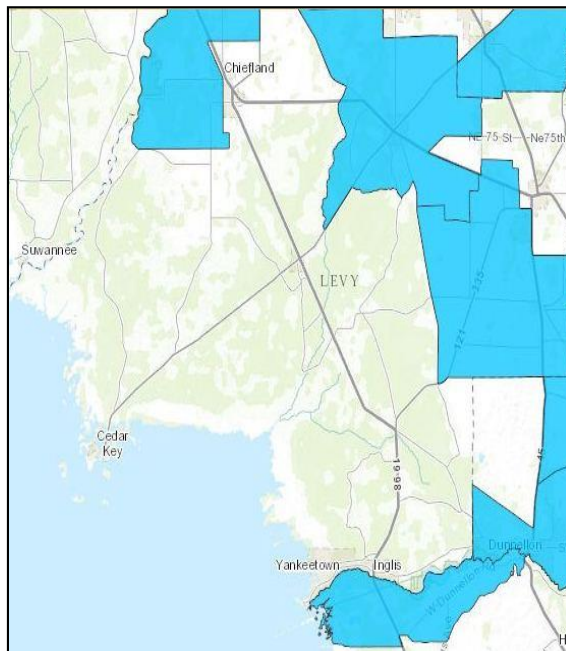
Polk County



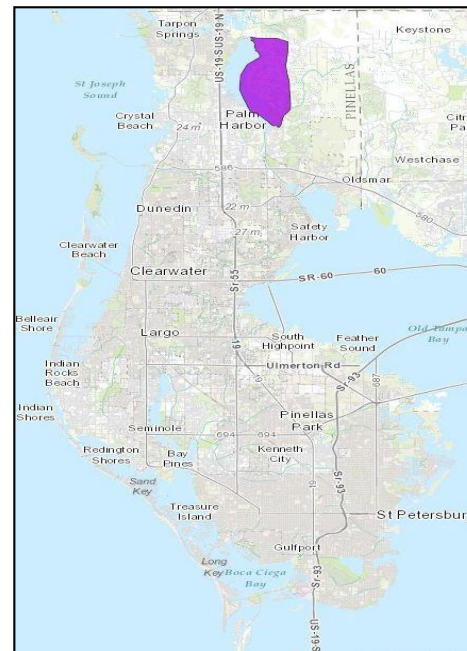
Hamilton County



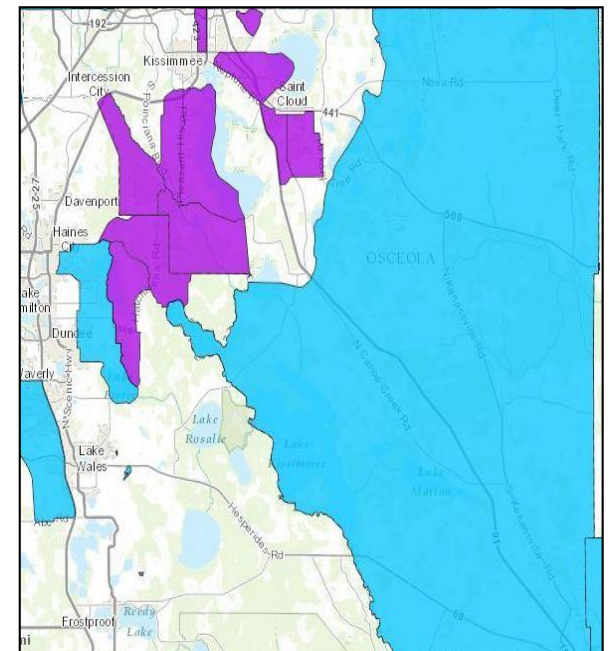
Gadsden County



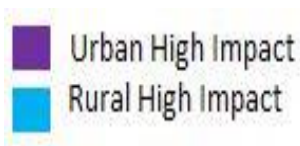
Levy County



Pinellas County



Osceola County



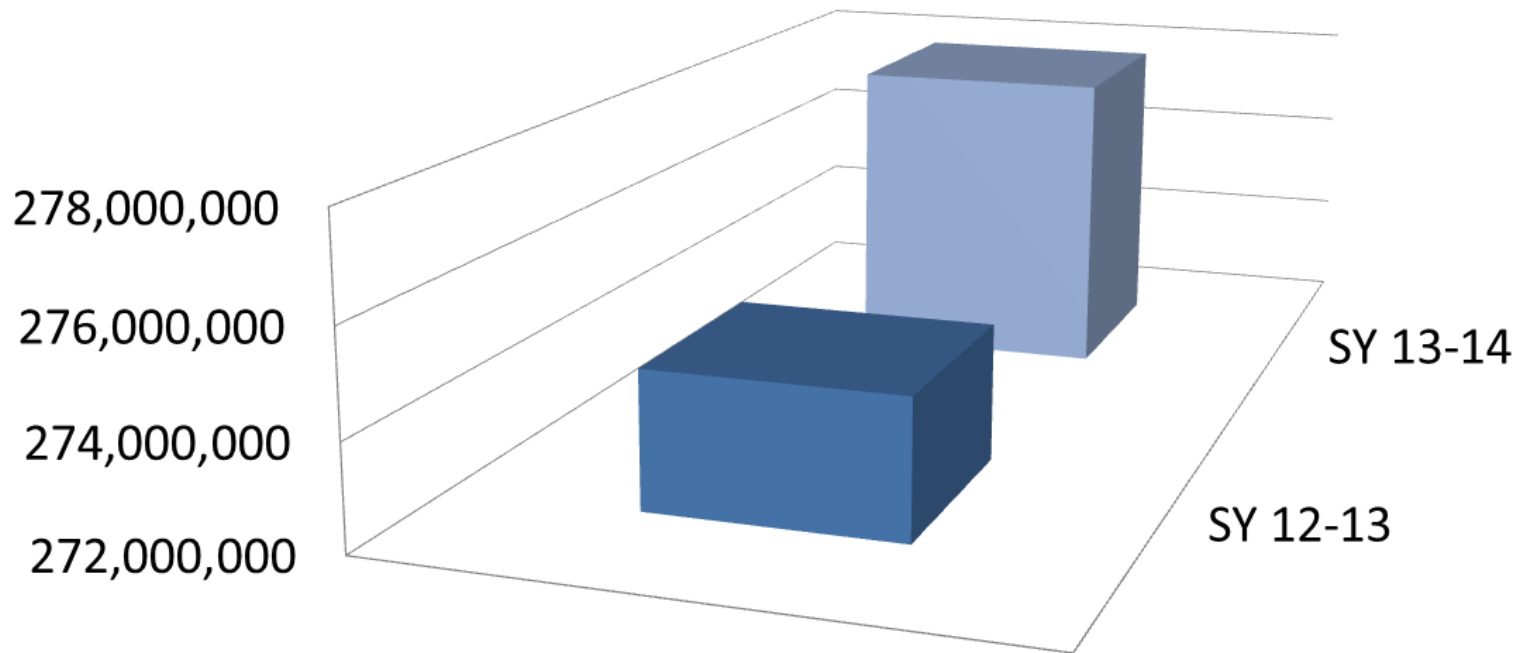
Florida's Roadmap to Living Healthy

Key Findings

- Access to quality retail grocers throughout Florida is strongly linked to a variety of diet-related health outcomes.
- Transportation and nutrition education are also key factors in diet-related health outcomes.



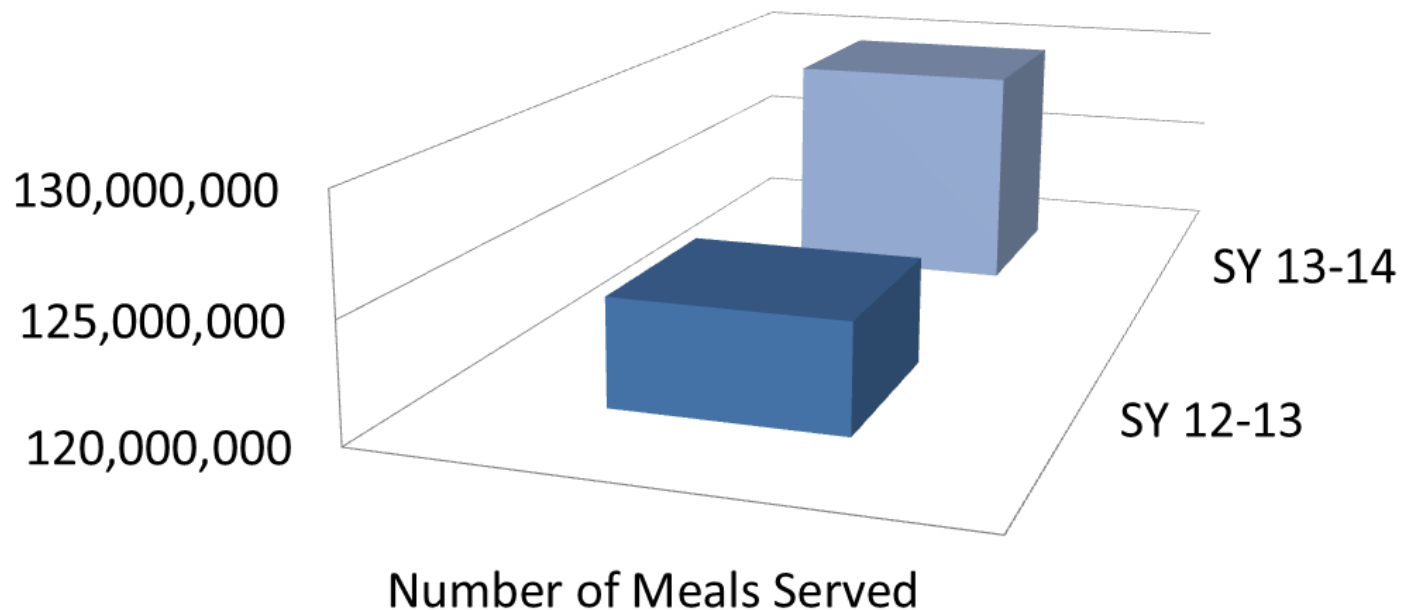
National School Lunch Program



	Number of Meals Served
■ SY 12-13	274,632,476
■ SY 13-14	277,904,104



School Breakfast Program



	Number of Meals Served
■ SY 12-13	124,621,057
■ SY 13-14	129,789,198



Community Eligibility Provision

	Add'l Breakfasts Served in SY 13-14	Add'l Lunches Served in SY 13-14
Osceola County	674,862	280,450
Pinellas County	588,437	636,738
Polk County	271,405	181,175
Hamilton County	126,504	22,602
Gadsden County	100,629	128,263
Levy County	66,700	86,792



Florida's Roadmap to Living Healthy

Questions or Comments?

Contact Us:

Robin Safley, Director

Division of Food, Nutrition and Wellness

Robin.Safley@FreshFromFlorida.com

850-617-7400





THE FLORIDA SENATE

Tallahassee, Florida 32399-1100

SENATOR DWIGHT BULLARD
39th District

COMMITTEES:

Agriculture, *Vice Chair*
Appropriations Subcommittee on Education
Appropriations Subcommittee on General
Government
Education
Environmental Preservation and Conservation
Military and Veterans Affairs, Space, and
Domestic Security

JOINT COMMITTEE:

Joint Administrative Procedures Committee

Memo

Senator Montford
Agriculture Committee, Chair

Please excuse Senator Dwight Bullard from January 5th, 2015 Agriculture Committee Meeting. He will not be able to attend due to the fact that he will not fly into Tallahassee.

If you have any questions, please contact Senator Bullard

Sincerely,

Dwight Bullard

Dwight M. Bullard
Florida Senate District 39

REPLY TO:

- ☐ 10720 Caribbean Boulevard, #435, Cutler Bay, Florida 33189 (305) 234-2208 FAX: (305) 234-2210
- ☐ 218 Senate Office Building, 404 South Monroe Street, Tallahassee, Florida 32399-1100 (850) 487-5039

Senate's Website: www.flsenate.gov

DON GAETZ
President of the Senate

GARRETT RICHTER
President Pro Tempore



THE FLORIDA SENATE

Tallahassee, Florida 32399-1100

COMMITTEES:

Communications, Energy, and Public Utilities, *Chair*
Agriculture
Appropriations
Appropriations Subcommittee on Health
and Human Services
Health Policy
Transportation

JOINT COMMITTEES:

Joint Administrative Procedures Committee
Joint Legislative Budget Commission

SENATOR DENISE GRIMSLEY

Deputy Majority Leader
21st District

December 18, 2014

The Honorable Bill Montford
335 Knott Building
404 S. Monroe Street
Tallahassee, FL 32399-1100

Dear Chairman Montford,

I am writing to request permission to be excused from the Agriculture Committee meeting to be held on Monday, January 5, 2015. I have a previous engagement that I need to attend.

Sincerely,

A handwritten signature in cursive script that reads "Denise Grimsley".

Denise Grimsley
District 21

REPLY TO:

- ☐ 205 South Commerce Avenue, Suite A, Sebring, Florida 33870 (863) 386-6016
- ☐ 212 East Stuart Avenue, Lake Wales, Florida 33853 (863) 679-4847
- ☐ 306 Senate Office Building, 404 South Monroe Street, Tallahassee, Florida 32399-1100 (850) 487-5021

Senate's Website: www.flsenate.gov

ANDY GARDINER
President of the Senate

GARRETT RICHTER
President Pro Tempore

CourtSmart Tag Report

Room: SB 301
Caption: Senate Agriculture

Case:
Judge:

Type:]

Started: 1/5/2015 4:04:37 PM
Ends: 1/5/2015 5:07:20 PM Length: 01:02:44

4:04:43 PM Meeting called to order by Chair Montford
4:04:54 PM Roll call by Administrative Assistant, Joyce Butler
4:05:17 PM Chair Montford stated that Senators Grimsley and Bullard were excused
4:05:27 PM Comments from Chair Montford
4:05:54 PM Welcome back of staff by Chair Montford
4:06:16 PM Introduction of Agriculture Committee staff by Katherine Becker
4:06:48 PM Additional comments from Chair Montford and introduction of Senators on committee
4:07:28 PM Comments from Vice Chairman Dean
4:08:06 PM Comments from Senator Garcia
4:09:21 PM Comments from Chair Montford
4:09:31 PM Comments from Senator Sobel
4:10:22 PM Comments from Senator Galvano
4:11:32 PM Additional comments from Chair Montford speaking on behalf of Senators Grimsley and Bullard
4:12:41 PM Presentation by Grace Lovett, Director, Office of Legislative Affairs regarding Overview of the Department of Agriculture and Consumer Services
4:35:45 PM Comments from Chair Montford
4:36:20 PM Comments/Question from Senator Sobel
4:36:38 PM Response from Grace Lovett
4:36:54 PM Follow-up question from Senator Sobel
4:37:03 PM Response from Grace Lovett
4:37:24 PM Comments from Chair Montford
4:37:31 PM Comments from Grace Lovett
4:38:30 PM Presentation by Robin Safley, Director, Division of Food, Nutrition and Wellness on Florida's Roadmap to Healthy Living
4:42:07 PM Question from Chair Montford
4:42:16 PM Response from Robin Safley
4:43:05 PM Follow-up question from Chair Montford
4:43:16 PM Response from Robin Safley
4:44:13 PM Continued presentation by Robin Safley
4:48:30 PM Question from Chair Montford
4:48:44 PM Response from Robin Safley
4:50:18 PM Question from Chair Montford
4:50:24 PM Response from Robin Safley
4:51:16 PM Question from Senator Sobel
4:51:25 PM Response from Robin Safley
4:53:31 PM Additional question from Senator Sobel
4:53:37 PM Response from Robin Safley
4:56:28 PM Question from Senator Garcia
4:57:20 PM Response from Robin Safley
5:00:54 PM Follow-up question from Senator Garcia
5:01:01 PM Response from Robin Safley
5:01:59 PM Additional question from Senator Garcia
5:02:08 PM Response from Robin Safley
5:03:51 PM Response from Chair Montford
5:04:09 PM Question from Chair Montford
5:04:15 PM Response from Robin Safley
5:07:08 PM Comments from Chair Montford
5:07:14 PM Senator Garcia moves to rise