

The Florida Senate
COMMITTEE MEETING EXPANDED AGENDA

AGRICULTURE
Senator Collins, Chair
Senator Boyd, Vice Chair

MEETING DATE: Tuesday, December 12, 2023
TIME: 4:00—6:00 p.m.
PLACE: 301 Senate Building

MEMBERS: Senator Collins, Chair; Senator Boyd, Vice Chair; Senators Baxley, Berman, Rouson, and Simon

TAB	BILL NO. and INTRODUCER	BILL DESCRIPTION and SENATE COMMITTEE ACTIONS	COMMITTEE ACTION
1	Presentation by the USDA Military Veterans Agricultural Liaison, Command Sergeant Major Monshi Ramdass, U.S. Army (Ret)		Presented
2	Presentation by the Future Farmers of America		Presented
3	Overview of Florida's Beef Industry		Presented
4	Presentation on Technology in Agriculture by UF/IFAS		Presented
Other Related Meeting Documents			



United States Department of Agriculture

VETERANS

**Careers in Agriculture for
Transitioning Service Members,
Veterans, and Military Spouses**



Why Veterans?

There are approximately 17 million veterans in the U.S.

- These veterans make up around 8% of non-metropolitan residents, compared to around 6% of U.S. residents overall.
- Over 192,000 to 250,000 service members transition out of DoD annually, and there are over 17 million veterans in America. According to the 2017 Census of Agriculture, 370,619 veterans are farmers. That accounts for 11% of the 3.2 million farmers in America. The 11% of farms operated by veteran producers sold \$41 billion in agricultural products in 2017, of which \$22 billion were crop sales and \$19 billion were sales of livestock and livestock products.
- The U.S. Census Bureau's 2018 Annual Business Survey reports that there are over 1.9 million veteran-owned businesses (including around 484,000 employer firms and 1.5 million nonemployee firms) with an estimated \$1.2 trillion in revenue, approximately 5.2 million employees, and about \$232.6 billion in annual payroll.
 - ✓ Veterans want meaningful work and quality of life that can be achieved through farming, ranching, community leadership or owning a small business
- USDA Needs Veterans so that together, we can:
 - ✓ Feed America and keep our food supply abundant, safe and secure
 - ✓ Preserve and strengthen rural communities
 - ✓ Restore and conserve the environment



United States Department of Agriculture

VETERANS



Navy Veteran Carlina Williams started a mobile juice business, Communion Juice, which serves locally-sourced, cold-pressed fresh juice and herbal shots. She hopes to eventually franchise her business.



Veterans can learn to fight wildfires through USDA Forest Service apprenticeships.



Air Force Veteran Rupert Richards is USDA's Agricultural Marketing Service Specialty Crops Inspection/Training Branch Chief in Washington, D.C.



Marine Corps Veteran Calvin Riggelman, USMC Veteran, took the products from his family farm and transformed them into a wide range of condiments.



Air Force Veteran Angela Mulder learns about agriculture and farming by volunteering with Vets on the Farm.

VETERANS



Jesse McCarty, US Navy veteran and military spouse, supports 2018 Canada Lynx threatened species preservation research for forest preservation planning.



Erin Kesler, active-duty Marine Corps spouse, at Rappahannock County Public Schools District in Virginia.



Randall Sutton, army veteran and veteran spouse, now works as a wildlife biologist with the US Forest Service restoring and protecting wildlife habitat.



Liz Colby, P.E., active-duty spouse, works as a state hydrologic and hydraulic engineering technical lead with USDA's Natural Resource and Conservation Service in California.



Candace E. Hall, veteran and retired military spouse, works as a management and program analyst assisting with operations and administrative activities.

We serve those who serve us

- Veterans don't know what veterans don't know!
- Oath of an enlisted service member or officer has no expiration. Veterans want to continue to serve their communities.
- Institute for Veterans and Military Families V-Start: State report:
[V.START Dashboards - D'Aniello Institute for Veterans and Military Families \(syracuse.edu\)](https://vstart.syracuse.edu/V-START-Dashboards-D'Aniello-Institute-for-Veterans-and-Military-Families)
- Veteran Entrepreneurship:
[Veteran Entrepreneurship Across Urban & Rural Places \(2022\) - D'Aniello Institute for Veterans and Military Families \(syracuse.edu\)](https://vstart.syracuse.edu/Veteran-Entrepreneurship-Across-Urban-&-Rural-Places-2022-D'Aniello-Institute-for-Veterans-and-Military-Families)
- Veterans Crisis Line: Dial 988, then press 1
- Know where your DD 214 certificate of release or discharge from active duty is, and make sure a family member has a copy.





Opportunities in the 3Es

EMPLOYMENT



EDUCATION



ENTREPRENEURSHIP



United States Department of Agriculture

EMPLOYMENT



Employment

USDA's Employment Opportunities for transitioning service members, veterans, and military spouses:

- Match skills / qualifications to careers at USDA
- Review resumes & provide feedback
- Explain the Federal hiring process (USA JOBS, special hiring authorities, category rating)

Your military experience can be directly translatable to jobs at USDA, such as:

- Criminal Justice
- Soil Conservationist Technician
- Contracting and Procurement
- Information Technology
- Food Inspection and Public Health
- Firefighter
- Finance
- Economists



USDA MVAL Monshi Ramdass (right) with TAP Manager Troy Johnson at MacDill Air Force Base in Florida.



Employment

On-the-Job Training:

- **Paid Apprenticeships**
 - **Agricultural Commodity Graders** - 12-month training program through USDA's Agricultural Marketing Service, starting at grades GS-5/7
 - **Food Inspector's Apprenticeship Program** - USDA Food Safety and Inspection Service offers a two-phased approach to a career in the federal civilian workforce through its 4-week Pre-Apprenticeship Program for transitioning Service members and a 12-month paid Apprenticeship Program designed exclusively for veterans.
 - **Wildland Firefighters** - 3,000-hour on-the-job learning program through USDA's Forest Service, with positions starting at grades GS-3, 4/5, and 5.
 - **Dairy Grazers*** - Includes full-time employment, training and mentorship over a 2-year period. **Dairy Grazing Apprenticeship is an independent non-profit organization with a National Apprenticeship under the U.S. Department of Labor-Employment and Training Administration.*
- **DoD SkillBridge/Career Skills Program** - Eligible service members can participate in industry training instead of performing military duties during the closing months of their career.





Employment Resources

- Contact USDA's Veterans Employment Program by emailing:
veterans@usda.gov
- Department of Labor Apprenticeships:
[Apprenticeship | U.S. Department of Labor \(dol.gov\)](https://www.dol.gov)
- Agricultural Commodity Grader Apprenticeship:
[Agricultural Commodity Grader \(GS-1980\) | Agricultural Marketing Service \(usda.gov\)](https://www.usda.gov)
- Wildland Firefighter Apprenticeship:
[Wildland Firefighter Apprenticeship Program | US Forest Service \(usda.gov\)](https://www.usda.gov)
- Dairy Grazing Apprenticeship:
[Dairy Grazing Apprenticeship \(dga-national.org\)](https://dga-national.org)
- DoD SkillsBridge:
[DOD SkillBridge Program \(osd.mil\)](https://osd.mil)
- Army Career Skills Program:
[Career Skills Program \(CSP\) :: U.S. Army Installation Management Command](https://www.army.mil)
- Special Hiring Authorities for Military Spouses:
[Special Hiring Authorities for Military Spouses & Family Members \(opm.gov\)](https://opm.gov)



EDUCATION



Education

Ag experts are in high demand.

- **Higher Education** – A recent Purdue University research study indicates that about 60,000 agriculture-related jobs are available annually, but many can't be filled due to lack of graduates.

Veterans can fill this need by getting a degree in:

- Plant science
- Food science
- Environmental science
- Sustainable biomaterials
- Water resources science and engineering
- Precision agriculture
- Veterinary medicine



U.S. Army Veteran Matt McCue is working on his graduate degree in international agricultural development at the University of California, Davis.
(Photo Courtesy: Farmer Veteran Coalition)

- **Certificates** – Many U.S. institutions and organizations offer certificates in sustainable agriculture.
- **Student Farms** – Offer practical, hands-on education through courses, internships, special projects, and research projects.

Education

- **Farm Training and Apprenticeships** – Equip veterans with the right tools and skills to gain experience and qualifications needed to participate in USDA programs.
 - **ATTRA's** Armed to Farm program for military veterans provides trainings including conference presentations, two-day workshops, and week-long training events.
 - **Farmer Veteran Coalition** provides direct assistance to veterans in their beginning years of farming or ranching.
 - **Boots to Business Reboot with Agriculture Focus** provides training to veterans interested in beginning farming and ranching.
 - **USDA Beginning Ranching and Farming Webinar** provides training to veterans interested in beginning farming and ranching.
- **Extension** – USDA works with universities to provide non-formal education and learning activities directly to ag producers, small business owners, consumers, and families throughout the country.



Army/OIF Matt Smiley, left, explains blossom-end rot to USMC/OEF/OIF Marquise Rhym, right. Marquise was placed on R Kelley Farms outside Sacramento, CA for a 4-month internship. Once his internship is over, Marquise will be hired full-time to help manage the farm.



Education

- **2501 Grant Program:**

The objective of the 2501 Program is to show USDA's commitment to ensuring that underserved and veteran farmers, ranchers and foresters can equitably participate in USDA programs.

[Underserved and Veteran Farmers, Ranchers, and Foresters | USDA](#)

- **Enhancing Agricultural Opportunities for Military Veterans (AgVets):**

The program encourages the development of training opportunities specifically designed for military veterans. AgVets projects will offer onsite, hands-on training and classroom education leading to a comprehensive understanding of successful farm and ranch operations and management practices.

[Enhancing Agricultural Opportunities for Military Veterans \(AgVets\) | National Institute of Food and Agriculture \(usda.gov\)](#)

- **Beginning Farming and Ranching Development Program Grant (BFRDP):**

The Beginning Farmer and Rancher Development Program provides grants to organizations for education, mentoring and technical assistance initiatives for beginning farmers and ranchers.

[Beginning Farmer and Rancher Development Program \(BFRDP\) | National Institute of Food and Agriculture \(usda.gov\)](#)





Education Resources

- National Institute of Food and Agriculture:
<https://www.purdue.edu/usda/employment/>
- ATTRA Armed to Farm:
[Armed to Farm – Sustainable Agriculture Training For Military Veterans](#)
- Farmer Veteran Coalition:
[Farmer Veteran Fellowship Fund - FARMER VETERAN COALITION \(farmvetco.org\)](#)
- National Institute of Food and Agriculture Extension:
[Extension | National Institute of Food and Agriculture \(usda.gov\)](#)



ENTREPRENEURSHIP



[Army Veteran Brings Brewing Back to Butte - YouTube](#)

[Fridays on the Farm: From Veteran to Beginning Farmer | Farmers.gov](#)

[From Army to Agriculture: USDA Supports Military Veteran's Transition to Farming | Farmers.gov](#)

Entrepreneurship – From Farm to Fork

USDA can help agriculture entrepreneurs get access to capital and land and manage risk.

Loans

- Microloans
- Operating Loans
- Farm Ownership Loans

Land

- Transition Incentives Program

Enhancing Land Quality

- Environmental Quality Incentives Program
- Agricultural Easement Program
- Conservation Stewardship Program

Crop Insurance

Technical Assistance / Conservation Technical Assistance



Mannah Gbeh, pictured with his son, grew up in Liberia before coming to the U.S. and enlisting in the Navy, where he served three deployments in support of OIF and OEF. Today Mannah owns and operates Bee Valley Farm in Jamul, CA where he produces garlic, honey, olives and almonds.

Entrepreneurship – From Farm to Fork

Veterans who are part of the community of New and Beginning Farmers are eligible for USDA programs to help start – and continue – careers in farming.



- Access to ag resources, such as capital, land, business development, marketing, insurance, etc.
- Find information tailored to you by using the New Farmer Discovery Tool.
- Connect with a mentor, attend workshops, and receive online resources through USDA's partnership with SCORE.

Josh Eilers, a former Army Ranger, now owns a cattle ranch in Texas and specializes in high-quality FullBlood Wagyu.

Entrepreneurship – Rural Business

Veterans can help strengthen and develop rural communities by starting or expanding a rural business. USDA can help with:

- Loans and Loan Guarantees
- Processing and Marketing of Products
- Energy Efficiency Improvements



USAF Veteran Torrance Hart now runs a successful e-commerce business called Tweak & Twine

Rural is closer than you think!

[Eligibility \(usda.gov\)](https://www.usda.gov/eligibility)

See if your area is eligible by visiting our Eligibility Map



Loans to include Farm Service Loans, Single Family Home loans, Rural Business Loans, and Environmental Quality Incentives Program

Farm Service Direct and Guaranteed Loans

FY-2023, \$82.3 Million in Direct Loans and \$36.2 Million in Guaranteed Loans

Rural Development Single Family Home Loans-

FY-2023, \$17.1 Million in Direct Loans and \$156.2 Million in Guaranteed Loans

Rural Development Business Loans

FY-2023, \$24.4 Million in Guaranteed Loans

Environmental Quality Incentives Program (EQIP)

FY-2023, \$28.7 Million funded.



United States Department of Agriculture

Food Insecurity

Food insecurity is a lack of access to enough food for a healthy lifestyle. In 2018, about 11 percent of US households were food insecure at least some time during the year. Food insecurity tends to be higher in households relying on social assistance, single-parent homes, ethnic minorities and people who are homeless or house insecure. The number of food insecure Veterans is also high among those who served in the US wars in Iraq and Afghanistan. These Veterans are almost twice as likely to be food insecure compared to the general population.

SNAP

To get SNAP benefits, you must apply in the state in which you currently live and you must meet certain requirements, including resource and income limits, which are described on this page. SNAP income and resource limits are updated annually.

<https://www.fns.usda.gov/snap/recipient/eligibility>

<https://www.fns.usda.gov/snap/state-directory>

SNAP Toll-free 1-800-221-5689



United States Department of Agriculture



Entrepreneurship Resources

- How to Start a Farm: Beginning Farmers and Ranchers: <https://newfarmers.usda.gov/veterans>
- Loan Tool: [USDA Farm Loan Discovery Tool | Farmers.gov](#)
- Farm Answers: [Farm Answers](#)
- USDA and SCORE: <https://www.score.org/usda>
- Rural Development programs: <https://www.rd.usda.gov/programs-services/all-programs>
- Eligibility Map: [Eligibility \(usda.gov\)](#)
- U.S. Small Business Administration
 - USDA Rural Small Business information to soon be included in Boots to Business course (TAP): www.sba.gov/bootstobusiness
 - Get help with your business plan by visiting your local Veteran Business Outreach Center: www.sba.gov/vboc
- [Conservation Reserve Program: crp_transition_incentive_program-fact_sheet.pdf \(usda.gov\)](#)
- USDA Get Started Guide: [Get Started! A Guide to USDA Resources for Historically Underserved Farmers and Ranchers | Natural Resources Conservation Service](#)
- Veterans Florida: [Home - Veterans Florida](#)
[Agriculture - Veterans Florida](#)





THANK YOU!

Questions / Comments

Contact Us:

Veterans@usda.gov

Visit Us:

USDA Service Centers: <https://offices.sc.egov.usda.gov/locator/app>

Learn More:

www.usda.gov/veterans



United States Department of Agriculture

THE FLORIDA SENATE
APPEARANCE RECORD

(Deliver BOTH copies of this form to the Senator or Senate Professional Staff conducting the meeting)

Meeting Date _____

Bill Number (if applicable) _____

Topic Military Veterans AG Liaison

Amendment Barcode (if applicable) _____

Name MONSHI RAM RAMDASS

Job Title MVAL USDA

Address 2220 S NEED RD

Phone 772-834-3172

Street

FORT PIERCE FL

City

State

34945

Zip

Email MONSHI.Ram@usda.gov

Speaking: ☐ For ☐ Against ☒ Information

Waive Speaking: ☐ In Support ☐ Against
(The Chair will read this information into the record.)

Representing _____

Appearing at request of Chair: ☐ Yes ☐ No

Lobbyist registered with Legislature: ☐ Yes ☐ No

While it is a Senate tradition to encourage public testimony, time may not permit all persons wishing to speak to be heard at this meeting. Those who do speak may be asked to limit their remarks so that as many persons as possible can be heard.

This form is part of the public record for this meeting.

S-001 (10/14/14)



FLORIDA FFA ASSOCIATION

The Next Generation of Agriculturalists

70%

By 2050, agricultural production will need to increase by 70% in order to feed 9 billion people. With less land, water, and resources.

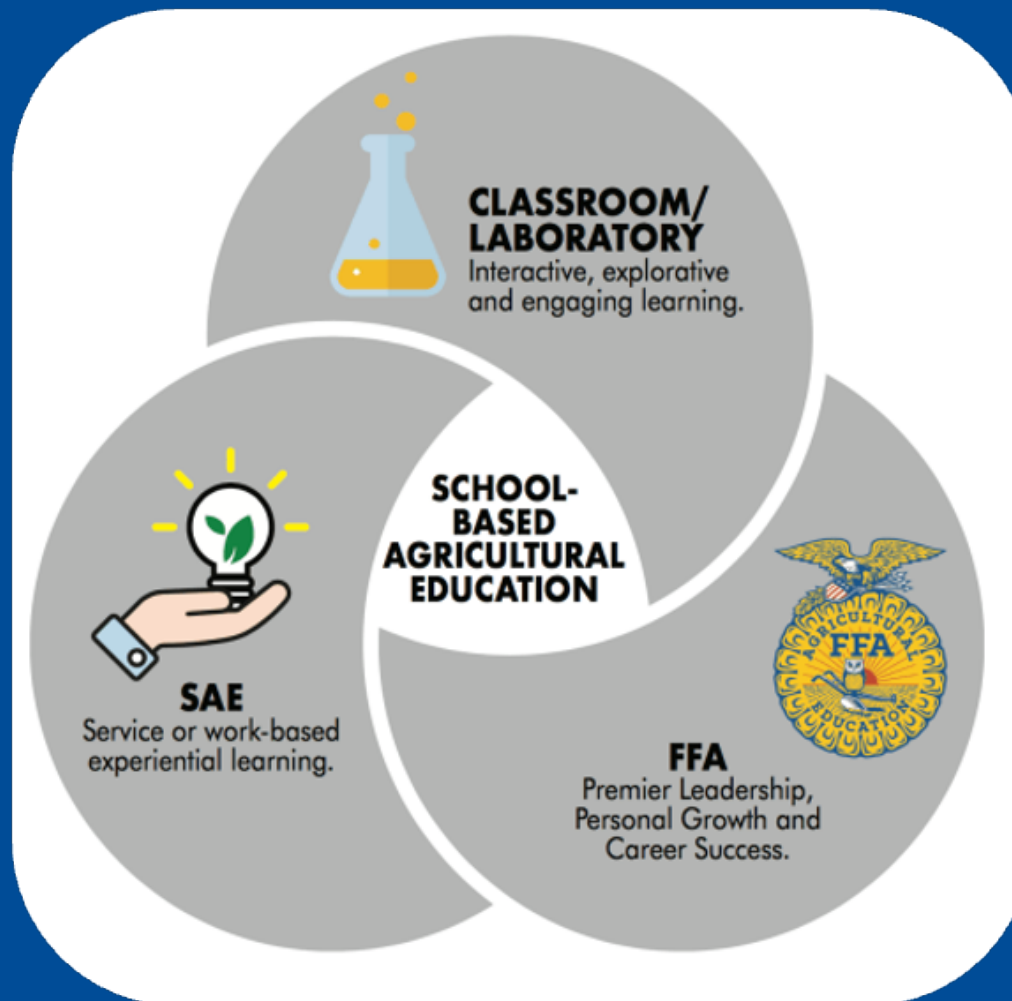
The future of agriculture is much more than farming. It's about the **next generation of agriculturalists** and a **new age of discovery**.



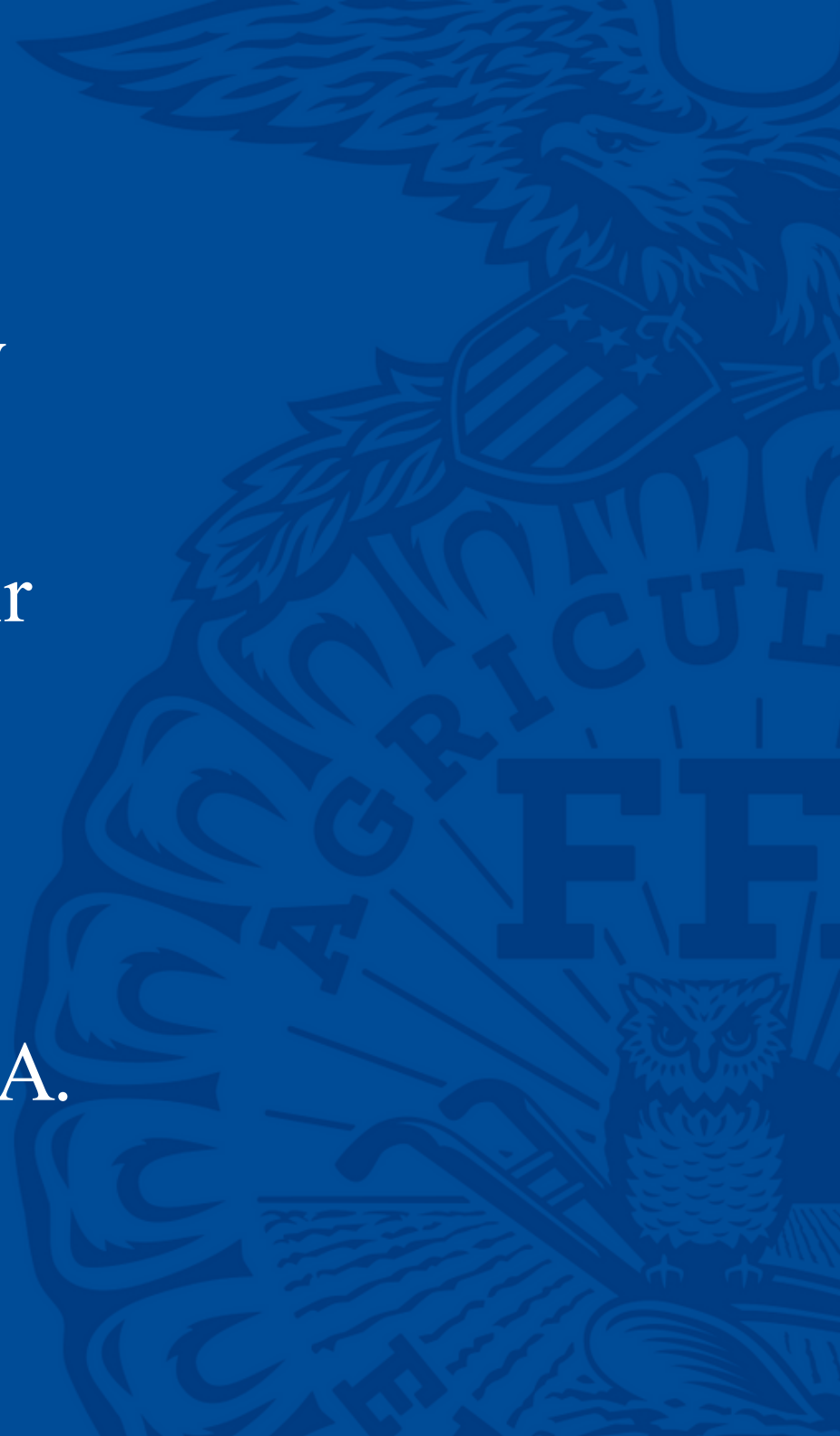


We are addressing a very key issue: the growing need for young, talented people in a variety of fields to consider a career in agriculture.

FFA is the most recognized component of agricultural education, but Supervised Agricultural Experiences and the classroom create a complete experience for our students.



33 farm boys started the organization in 1928, and now over 735,000 members nationally are developing their potential for premier leadership, personal growth and career success through agricultural education and FFA.





FFA is only part of a comprehensive strategy to build a heroic workforce & reconnect people with agriculture



Students can choose from eight different career pathways, preparing them for the workforce & college.



Supervised Agriculture Experiences allow students to gain real-world experience and apply their skills and knowledge from FFA & the classroom.



Agriculture Education proudly provides students with one of the most complete educational experiences available.

We've got some work to do before 2050, but we're up for the challenge. Our growing pains are a positive sign:

- Record membership
- Record participation



A man, Chuck Clemons, is standing at a podium on a stage. The podium has a sign that reads "CHUCK CLEMONS FLORIDA HOUSE OF REPRESENTATIVES DISTRICT 22". Behind him is a large screen displaying the number "\$1,250,000" in large white digits. The screen has a blue and yellow abstract background. The stage is lit with blue spotlights from above.

\$1,250,000

Thanks to the support of the Florida Legislature, beginning this school year every single student enrolled in agriculture education in Florida is now an FFA member with access to membership opportunities at no cost to them.

REMARKS

CHUCK CLEMONS

FLORIDA HOUSE OF REPRESENTATIVES



Speaker Pro Tempore Chuck Clemons has requested the continuation of this funding for the 2024-2025 school year by filing Appropriation Request #3547 entitled “Preparing Florida’s Workforce through Agriculture Education”



Together, we'll face these issues in an effort to tackle a global challenge.



96th Florida FFA State
Convention & Expo
June 10-14, 2024 – Orlando, FL



THE FFA MISSION

FFA makes a positive difference in the lives of students by developing their potential for premier leadership, personal growth and career success through agricultural education.

THE AGRICULTURAL EDUCATION MISSION

Agricultural education prepares students for successful careers and a lifetime of informed choices in the global agriculture, food, fiber and natural resource systems.

The Florida FFA Association is a resource and support organization that does not select, control, supervise or approve local chapter or individual member activities except as expressly provided for in the Florida FFA Constitution and Bylaws.

The Florida FFA Association affirms its belief in the value of all human beings and seeks diversity in its membership, leadership and staff as an equal opportunity employer.

The Florida Senate

APPEARANCE RECORD

Deliver both copies of this form to
Senate professional staff conducting the meeting

12/12/23

Meeting Date

Senate Ag

Committee

FFA

Bill Number or Topic

Amendment Barcode (if applicable)

Name

Kayelee Ennisman

Phone

352-812-5485

Address

5600 SW 56th St

Street

Email

Kayelee.ennisman@fla.senate.gov

Gainesville

City

FL

State

32608

Zip

Speaking:

☐ For

☐ Against



Information

OR

Waive Speaking:

☐ In Support

☐ Against

PLEASE CHECK ONE OF THE FOLLOWING:



I am appearing without
compensation or sponsorship.



I am a registered lobbyist,
representing:



I am not a lobbyist, but received
something of value for my appearance
(travel, meals, lodging, etc.),
sponsored by:

While it is a tradition to encourage public testimony, time may not permit all persons wishing to speak to be heard at this hearing. Those who do speak may be asked to limit their remarks so that as many persons as possible can be heard. If you have questions about registering to lobby please see Fla. Stat. §11.045 and Joint Rule 1. [2020-2022 Joint Rules.pdf \(flsenate.gov\)](#)

This form is part of the public record for this meeting.

S-001 (08/10/2021)

The Florida Senate

APPEARANCE RECORD

12/12/23

Meeting Date

Senate Ag

Committee

Deliver both copies of this form to
Senate professional staff conducting the meeting

FFA

Bill Number or Topic

Amendment Barcode (if applicable)

Name Jenna Larson

Phone

Address 5600 SW 34th St.

Street

Gainesville

City

FL

State

32608

Zip

Email jenna.larson@flaffa.org

Speaking: ☐ For ☐ Against ☒ Information

OR

Waive Speaking: ☐ In Support ☐ Against

PLEASE CHECK ONE OF THE FOLLOWING:



I am appearing without
compensation or sponsorship.



I am a registered lobbyist,
representing:

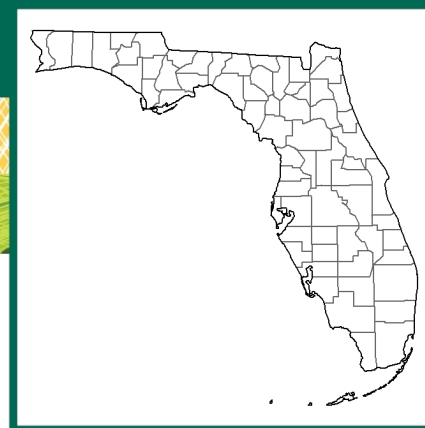


I am not a lobbyist, but received
something of value for my appearance
(travel, meals, lodging, etc.),
sponsored by:

While it is a tradition to encourage public testimony, time may not permit all persons wishing to speak to be heard at this hearing. Those who do speak may be asked to limit their remarks so that as many persons as possible can be heard. If you have questions about registering to lobby please see Fla. Stat. §11.045 and Joint Rule 1. [2020-2022 Joint Rules.pdf \(flsenate.gov\)](#)

This form is part of the public record for this meeting.

S-001 (08/10/2021)

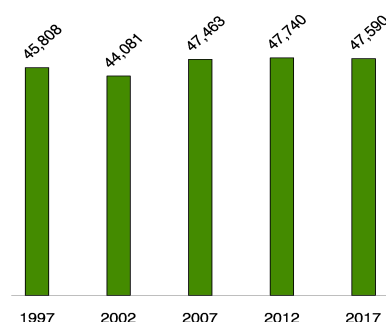


Florida

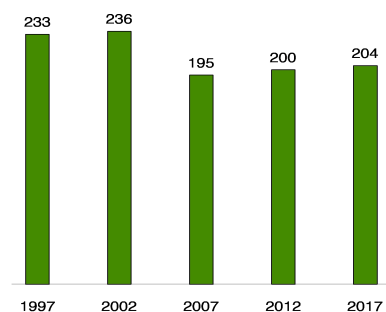
Total and Per Farm Overview, 2017 and change since 2012

	2017	% change since 2012
Number of farms	47,590	(Z)
Land in farms (acres)	9,731,731	+2
Average size of farm (acres)	204	+2
Total	(\$)	
Market value of products sold	7,357,343,000	-4
Government payments	59,120,000	+47
Farm-related income	328,906,000	+36
Total farm production expenses	6,507,308,000	(Z)
Net cash farm income	1,238,061,000	-17
Per farm average	(\$)	
Market value of products sold	154,599	-4
Government payments (average per farm receiving)	14,795	+46
Farm-related income	31,708	+35
Total farm production expenses	136,737	+1
Net cash farm income	26,015	-17

Number of Farms, 1997-2017



Average Farm Size, 1997-2017 (acres)



Farms by Value of Sales

	Number	Percent of Total ^a
Less than \$2,500	23,558	50
\$2,500 to \$4,999	4,813	10
\$5,000 to \$9,999	4,863	10
\$10,000 to \$24,999	4,842	10
\$25,000 to \$49,999	2,592	5
\$50,000 to \$99,999	2,010	4
\$100,000 or more	4,912	10

Farms by Size

	Number	Percent of Total ^a
1 to 9 acres	14,072	30
10 to 49 acres	19,696	41
50 to 179 acres	7,791	16
180 to 499 acres	3,204	7
500 to 999 acres	1,286	3
1,000 + acres	1,541	3

Market Value of Agricultural Products Sold

	Sales (\$1,000)	Rank in U.S. ^b	States Producing Item
Total	7,357,343	23	50
Crops	5,704,533	11	50
Grains, oilseeds, dry beans, dry peas	48,165	41	50
Tobacco	4,903	10	18
Cotton and cottonseed	52,456	16	17
Vegetables, melons, potatoes, sweet potatoes	1,284,110	2	50
Fruits, tree nuts, berries	1,298,656	3	50
Nursery, greenhouse, floriculture, sod	2,274,654	2	50
Cultivated Christmas trees, short rotation woody crops	1,553	22	50
Other crops and hay	740,036	6	50
Livestock, poultry, and products	1,652,810	32	50
Poultry and eggs	406,742	24	50
Cattle and calves	521,847	28	50
Milk from cows	478,124	20	50
Hogs and pigs	3,989	35	50
Sheep, goats, wool, mohair, milk	6,169	33	50
Horses, ponies, mules, burros, donkeys	112,778	3	50
Aquaculture	72,185	9	50
Other animals and animal products	50,977	9	50

2 Percent of U.S. agriculture sales

Share of Sales by Type (%)

Crops	78
Livestock, poultry, and products	22

Land in Farms by Use (acres)

Cropland	2,825,803
Pastureland	3,621,801
Woodland	2,514,794
Other	769,333

Top Counties: Land in Farms (acres)

Osceola	525,055
Palm Beach	487,845
Polk	487,128
Hendry	433,113
Glades	428,689

Total Producers ^c

78,899

Percent of farms that:

Sex	
Male	46,777
Female	32,122
Age	
<35	5,038
35 – 64	44,941
65 and older	28,920
Race	
American Indian/Alaska Native	539
Asian	1,384
Black or African American	2,299
Native Hawaiian/Pacific Islander	112
White	73,864
More than one race	701
Other characteristics	
Hispanic, Latino, Spanish origin	7,121
With military service	10,664
New and beginning farmers	24,738

Have internet access **76**

Farm organically (Z)

Sell directly to consumers **7**

Hire farm labor **26**

Are family farms **95**

Top Crops in Acres ^d

Forage (hay/haylage), all	422,551
Oranges, all	422,421
Sugarcane for sugar	386,428
Vegetables harvested, all	245,375
Peanuts for nuts	186,803

Livestock Inventory (Dec 31, 2017)

Broilers and other meat-type chickens	12,893,097
Cattle and calves	1,635,742
Goats	61,159
Hogs and pigs	15,567
Horses and ponies	90,638
Layers	7,536,543
Pullets	2,464,009
Sheep and lambs	24,504
Turkeys	7,081

See 2017 Census of Agriculture, U.S. Summary and State Data, for complete footnotes, explanations, definitions, commodity descriptions, and methodology.

^a May not add to 100% due to rounding. ^b Among states whose rank can be displayed. ^c Data collected for a maximum of four producers per farm.

^d Crop commodity names may be shortened; see full names at www.nass.usda.gov/go/cropnames.pdf. ^e Position below the line does not indicate rank.

(D) Withheld to avoid disclosing data for individual operations. (NA) Not available. (Z) Less than half of the unit shown. (-) Represents zero.

FL exported over
\$1 Billion

worth of cattle, meat, and dairy products to international markets

Florida Cattle Industry 2017 Economic Contributions



Valued at
\$4.61 billion
annually!

Did You Know?

Florida ranchlands provide many environmental services including:

- water storage
- outdoor recreation
- mitigation of droughts and floods
- wildlife habitat
- carbon storage

Direct Contributions



Beef Cattle Farming

Employment: 8,174 Jobs
Revenues: \$640 Million

Meat Processing

Employment: 3,045 Jobs
Revenues: \$1.566 Billion



914,000
Beef
Cattle



116,000
Dairy
Cattle

Dairy Farming

Employment: 1,924 Jobs
Revenues: \$621 Million

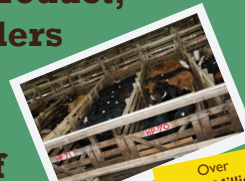


Dairy Product Manufacturing

Employment: 2,293 Jobs
Revenues: \$1.504 Billion

Livestock, Dairy Product, and Meat Wholesalers

Employment: 4,191 Jobs
Revenues: \$984 Million



Retail Sales of Beef and Dairy Products

Employment: 34,713 Jobs
Revenues: \$2.296 Billion



Allied Services Include:
Support activities for animal production
Veterinary services
Animal feed manufacturing

Allied Services

Employment: 3,193 Jobs
Revenues: \$480 Million

Total Contributions

Beef and dairy cattle industry activities also generate additional economic activity through Florida's economy!

Industry Output

\$16.798
Billion

51%
Indirect + Induced
Effects

49%
Direct Effects

Labor Income

\$4.639
Billion

57%
Indirect + Induced
Effects

43%
Direct Effects

Employment

118,191
Jobs

51%
Indirect + Induced
Effects

49%
Direct Effects

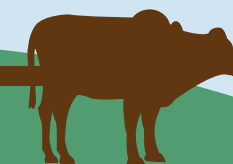
Gross State Product

\$7.653
Billion

60%
Indirect + Induced
Effects

40%
Direct Effects

Multiplier Effect



For every \$1 of direct output in the beef and dairy cattle industry...



... A total of \$2 of output is contributed to Florida's economy



For every 1 direct job in the beef and dairy cattle industry



A total of 2 jobs are supported throughout Florida's economy

5.4 Million Acres

of improved pasture, rangeland, and dairy cattle production representing 15.6% of the state's land area

Top 5 FL Counties

for beef and dairy cow inventory

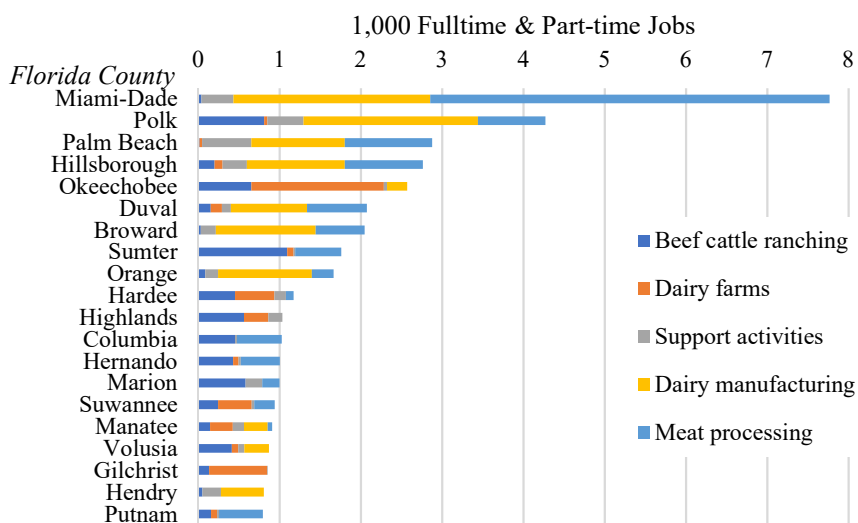
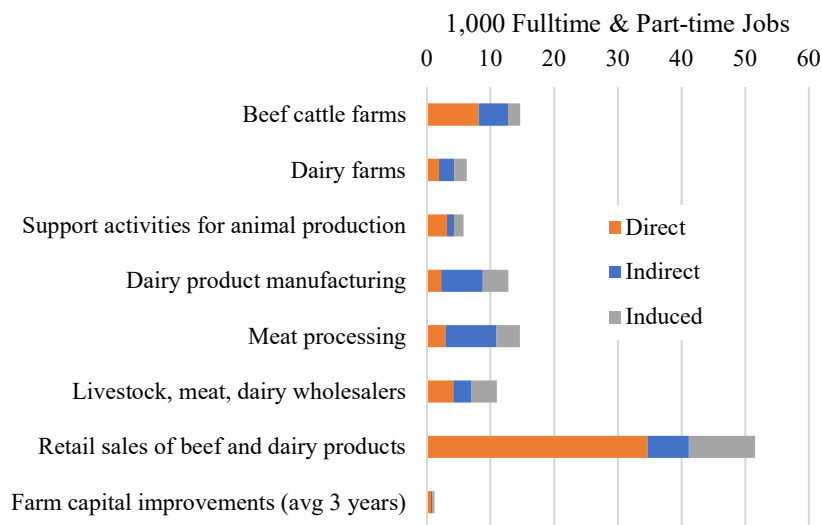
- 1 Okeechobee (110,000)
- 2 Highlands (75,500)
- 3 Polk (60,600)
- 4 Osceola (60,000)
- 5 Hardee (48,100)



Economic Contributions of Beef and Dairy Cattle and Allied Industries in Florida in 2017

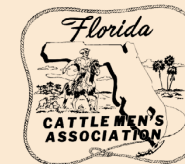
Fact Sheet

- **5.4 million** acres of pasture and range land used for cattle grazing (2012), **15.6%** of state land area
- **1.68 million** inventory of cattle and calves in January 2019
- **18,433** beef cattle operations, **425** dairy operations, **213** processing-manufacturing firms, plus supporting services, feed manufacturers, veterinarians, wholesale and retail distributors of beef and dairy products
- **\$502 million** value of cattle produced; **300 million** gallons of milk produced worth **\$537 million**
- **\$6.40 billion** retail sales of beef and dairy products, representing 16.9% of food store sales in Florida
- **\$1.03 billion** international exports of meat and dairy products
- **118,191** fulltime and part-time jobs generated (including indirect and induced regional multiplier effects), represents **1.02%** of state workforce supported
- **\$16.80 billion** industry output or business revenue contribution
- **\$7.65 billion** value added contribution to Gross State Product
- **\$4.64 billion** labor income contribution to employee wages, salaries, benefits
- **\$712 million** generated to state-local tax revenues, **\$1.16 billion** federal tax revenues
- **10%+** of total economic activity attributed to the cattle industry in Lafayette, Okeechobee, Gilchrist, Madison, and Hardee Counties
- **\$4.61 billion** annual value of non-marketed ecosystem services provided by Florida pastures and rangelands for wildlife habitat, biodiversity, water storage and treatment, carbon capture, outdoor recreation.



Florida is Cattle Country

In partnership with



FLORIDA has a long and colorful history of cattle ranching. The state has supported cattle grazing since the arrival of Spanish explorers almost 500 years ago, and many ranching families are into their 6th and 7th generations. Native American culture in Florida is tightly linked to the cattle industry, with the regional Seminole and Miccosukee tribes managing large ranches.

Until the 1930's many Florida cattle were descended from the early Spanish herds. Known as cracker cattle, they are now preserved as a rare breed. Today, the breeds that dominate Florida beef production have both European and Indian heritage.

5.4+ million
acres of Florida land are used for pasture and rangeland. That's
15.6%
of the state's total land area.

In January 2018, Florida had
1.63 million
cattle and calves, including
886,000
beef cows.

Feeding the World

Florida's cattle produce over
231 million
pounds of beef per year, providing
334 million
meals to consumers.¹

Cattle by-products are used in millions of everyday things such as
cosmetics, crayons, bandages, sheetrock and leather goods.

They also provide important medicines and supplements such as
insulin, heparin and vitamin B12.²

Driving the Economy

In CY 2017, the Florida cattle industry and allied industries supported
118,191
full-time and part-time jobs.

\$4.64 billion
in labor income (wages, salaries, benefits, business-owner income).

\$16.8 billion
in output or revenues.

\$712 million
in state and local tax revenues.

\$7.65 billion
in value added or Gross State Product.

\$1.16 billion
in federal tax revenues.

Pastures and rangelands also support recreational activities such as
fishing, hunting and wildlife viewing.

Source: Hodges, A.W., Court, C.D., Rahmani, M., and Stair, C.A. 2019. Economic Contributions of Beef and Dairy Cattle and Allied Industries in Florida in 2017. University of Florida/IFAS, Food and Resource Economics Department. <https://bit.ly/2C4hHw>

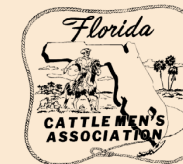
¹Figures contributed by UF/IFAS sources.

²Iowa State University. Date Unspecified. Cattle By-Products. <https://bit.ly/2NBuYlo>

An Equal Opportunity Institution.

Florida's Pastures and Rangelands

In partnership with



Preserving Natural Resources

Well-managed cattle ranches work in harmony with the natural environment, providing wildlife habitat, biodiversity, air and water purification, carbon storage, moderation of extreme weather events, soil preservation, and control of agricultural pests. In Florida, the dollar value of such ecosystem services is estimated at \$4.6 billion annually.¹



Plants and Wildlife

Cattle ranches provide sensitive and unique ecosystems that support many native and endangered plants, including bromeliads, milkweed, pawpaw, scrub palmetto, bald cypress trees and sabal palms.

The extensive open spaces on ranches are crucial for protected wildlife species with a large home range, such as the Florida panther and black bear. The mosaic of habitats on ranches, including pastures, woodlands and wetlands, provide homes for many notable wildlife species, including the bald eagle, American alligator, gopher tortoise and more.



Water

Some large cattle ranches in Central and South Florida have partnered with Water Management Districts to provide on-site water impoundment as a low-cost option to enhance water quality and reduce flooding.¹



Carbon Footprint

Improved efficiency and animal well-being mean a **16% lower carbon footprint and fewer natural resources** used for every pound of beef produced.²

Well-managed beef cattle grazing systems and improved feed production practices can reduce the carbon footprint of beef and contribute to the reversal of global climate change.



Land

Florida cattlemen are dedicated to preserving the land and its resources by entering into conservation easement agreements and assisting public land managers through managed grazing leases.

Conservation easements allow public and private organizations to purchase property rights, such as development and land-use conversion rights, that are needed to accomplish specific water resource and environmental protection goals.

Wetlands constitute 15-25% of grazed land, and Florida ranchers have enrolled 185,496 acres in the USDA's voluntary Wetland Reserve Easement program, which purchases the development rights to the wetlands and restores the hydrology of these areas.³

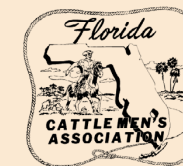
¹Hodges, A.W., Court, C.D., Rahmani, M., and Stair, C.A. 2019. Economic Contributions of Beef and Dairy Cattle and Allied Industries in Florida in 2017. University of Florida/IFAS, Food and Resource Economics Department. <https://bit.ly/2C4hHbw>

²Capper, J.L. 2011. The Environmental Impact of Beef Production in the United States. Journal of Animal Science Vol. 89, Issue 12, pp. 4249-4261. Cary, N.C.: Oxford University Press.

³Figures contributed by UF/IFAS sources.

Florida Cattle Best Management Practices

In partnership with



Florida ranchers work with the Florida Department of Agriculture and Consumer Services to implement Best Management Practices (BMPs) that reduce nitrogen and phosphorus loads in water leaving their properties.

As of 2017, nearly
11,000
individual BMP projects had
been implemented since the
program began in 2005.

Over
5 million
acres of Florida agricultural
land are enrolled in BMP programs.

Over **80%** (1,926,000 acres)
of the agricultural lands within the
Lake Okeechobee watershed are currently enrolled
in the Notice of Intent BMP program, and
325,000
acres have been enrolled in a
BMP cost-share program.²

Best Management Practices include:

- Maintaining adequate vegetative cover by adjusting stocking rates and using prescribed grazing systems. Well-established and managed forage stands effectively reduce soil erosion, absorb nutrients, and provide nutrition for livestock.
- Carefully planning watering and feeding sites.
- Carefully planning temporary holding areas.
- Using structural techniques to abate pollution.
- Minimizing offsite water discharges.
- Minimizing the potential for erosion.¹

The Value of Agricultural Research and Extension

It is estimated that every
\$1 invested
in agricultural research and Extension results in a
return of \$20
from increased productivity.³

Source: Florida Department of Agriculture and Consumer Services. 2017 Annual Report. <https://bit.ly/2EPQA63>

¹Florida Department of Agriculture and Consumer Services. Water Quality Best Management Practices for Florida Cow/Calf Operations, 2008 Edition. <https://bit.ly/2H3XZ3I>

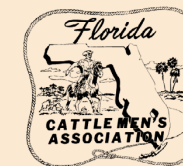
²Soil and Water Engineering Technology, Inc. Estimation of Total Phosphorus & Nitrogen Loads Reductions Associated with FDACS Lake Okeechobee Cost-Share BMP Program. 2016. <https://bit.ly/2TzcyC8>

³Alston, J.M., Andersen, M.A., James, J.S., and Pardey, P.G. 2010. Persistence Pays: U.S. Agricultural Productivity Growth and the Benefits from Public R&D Spending. New York: Springer.

An Equal Opportunity Institution.

Florida Cattle Driving the Economy

In partnership with



The state of Florida has a long and colorful history of cattle ranching.

Currently, there are

5.4+ million

acres of pasture and rangeland, representing

15.6%

of the state's total land area, used predominantly for beef and dairy cattle production.

As of January 2018, Florida had an inventory of

1.63 million

cattle and calves, including

886,000

beef cows.

In CY 2017, Florida producers received

\$502 million

from sales of cattle and calves. Most of the revenue came from sale of the year's calf crop, which numbered 790,000.

Florida's cattle contribute

231 million

pounds of beef annually. Which is the equivalent of

334 million

meals to consumers.¹

According to a UF/IFAS report, in CY 2017, for all Florida cattle industry groups and activities, statewide economic contributions included

118,191

full-time and part-time jobs,

\$16.8 billion

in industry output or revenues,

\$7.65 billion

in value added or

Gross State Product, and

\$4.64 billion

in labor income (employee wages, salaries, benefits, business owner income).

In addition, the industries contributed

\$712 million

in state and local government tax revenues and

\$1.16 billion

in federal tax revenues.

- In addition to commodity production and commercial services in the cattle and allied industries, pastures and rangelands in Florida support a variety of recreational activities, including fishing, hunting and wildlife viewing.
- Some large cattle ranches in Central and South Florida have partnered with the Water Management Districts to provide on-site water impoundment as a low-cost option to enhance water quality and reduce flooding.
- Other non-marketed ecosystem services offered by cattle ranches include provision of wildlife habitat, maintenance of biodiversity, air and water purification, carbon storage, moderation of extreme weather events, generation and preservation of soils, and control of agricultural pests.
- Although the ecosystem services mentioned above have not been formally valued, UF/IFAS economists recently estimated their value to the state as \$4.6 billion annually.

Source: Hodges, A.W., Court, C.D., Rahmani, M. and Stair, C.A. 2019. Economic Contributions of Beef and Dairy Cattle and Allied Industries in Florida in 2017. University of Florida/IFAS, Food and Resource Economics Department. <https://bit.ly/2C4hHbw>

¹Figures contributed by UF/IFAS sources.

An Equal Opportunity Institution.

The Florida Senate

APPEARANCE RECORD

Deliver both copies of this form to
Senate professional staff conducting the meeting

December 12, 2023

Meeting Date

beef industry presentation

Bill Number or Topic

senate agriculture

Committee

Amendment Barcode (if applicable)

Name Whitney Yoder

Phone 850-272-9097

Address 25535 NE Grady TEW Rd.
Street

Email

Altha, FL 32421
City State Zip

Speaking: ☐ For ☐ Against ☒ Information

OR

Waive Speaking: ☐ In Support ☐ Against

PLEASE CHECK ONE OF THE FOLLOWING:

☒ I am appearing without
compensation or sponsorship.

☐ I am a registered lobbyist,
representing:

☐ I am not a lobbyist, but received
something of value for my appearance
(travel, meals, lodging, etc.),
sponsored by:

While it is a tradition to encourage public testimony, time may not permit all persons wishing to speak to be heard at this hearing. Those who do speak may be asked to limit their remarks so that as many persons as possible can be heard. If you have questions about registering to lobby please see Fla. Stat. §11.045 and Joint Rule 1. [2020-2022 Joint Rules.pdf \(flsenate.gov\)](#)

This form is part of the public record for this meeting.

S-001 (08/10/2021)

12/12/23

Meeting Date

Agriculture

Committee

The Florida Senate

APPEARANCE RECORD

Deliver both copies of this form to
Senate professional staff conducting the meeting

Tab 3- Beef Industry

Bill Number or Topic

Amendment Barcode (if applicable)

Name **Pat Durden**

Phone **8505190896**

Address **800 Shakerag Road**

Email **patdurden@f-r-m.com**

Street

Kissimmee

City

FL

State

34744

Zip

Speaking: ☐ For ☐ Against ☒ Information

OR

Waive Speaking: ☐ In Support ☐ Against

PLEASE CHECK ONE OF THE FOLLOWING:

☐ I am appearing without
compensation or sponsorship.

☐ I am a registered lobbyist,
representing:

☐ I am not a lobbyist, but received
something of value for my appearance
(travel, meals, lodging, etc.),
sponsored by:

While it is a tradition to encourage public testimony, time may not permit all persons wishing to speak to be heard at this hearing. Those who do speak may be asked to limit their remarks so that as many persons as possible can be heard. If you have questions about registering to lobby please see Fla. Stat. §11.045 and Joint Rule 1. [2020-2022 Joint Rules.pdf \(flsenate.gov\)](#)

This form is part of the public record for this meeting.

S-001 (08/10/2021)

Dec 12 — 2023



Technologies for practical farms of tomorrow

*Kati Migliaccio, PhD PE
Agricultural and Biological Engineering*

Agricultural technology in Florida



- Opportunities to implement technology are changing due to availability of data, advances in technology & wireless connectivity, sensors, affordability
- Role for teaching, research, & extension for success
- Presentation includes example projects that are highly integrated with Florida farmers
- Presentation includes examples of robotic applications in agriculture



Florida Stakeholder Engagement Program

Florida Stakeholder Engagement Program (Florida STEP)

Florida STEP is an innovative extension program to engage growers, agriculture industry, agricultural research, and extension in an interactive real-world system to increase productivity, sustainability, and profitability.

Competition



Peer-to-peer interaction

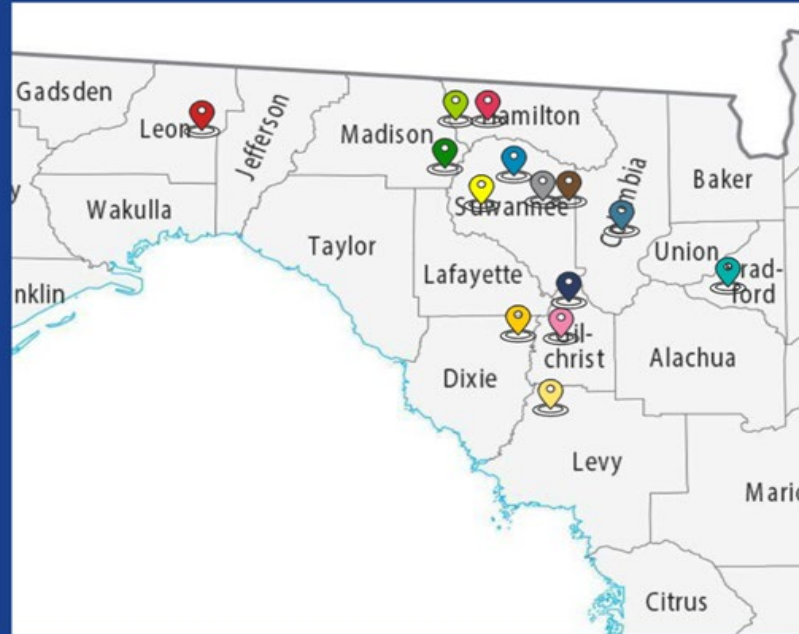


Research:
Dr. Sharma 4

Florida Stakeholder Engagement Program (Florida STEP)

2023 STEP Teams

- Control Freaks
- Columbia
- Quincey
- Sanchez Farms
- The Corn Flakes
- The Pioneers
- Jackson Farms
- Corn Makes Whiskey
- Wilkerson Farms
- Deas Farm
- Rootin' Tutens
- Tillis Farms
- FDACS
- Florikan

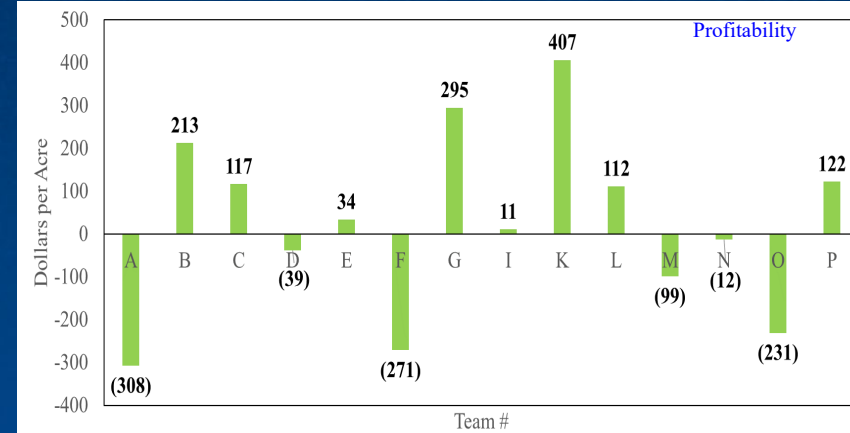
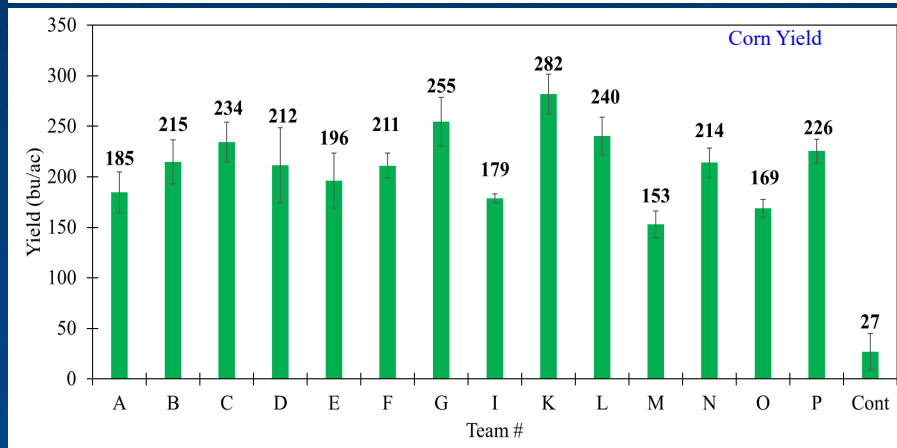
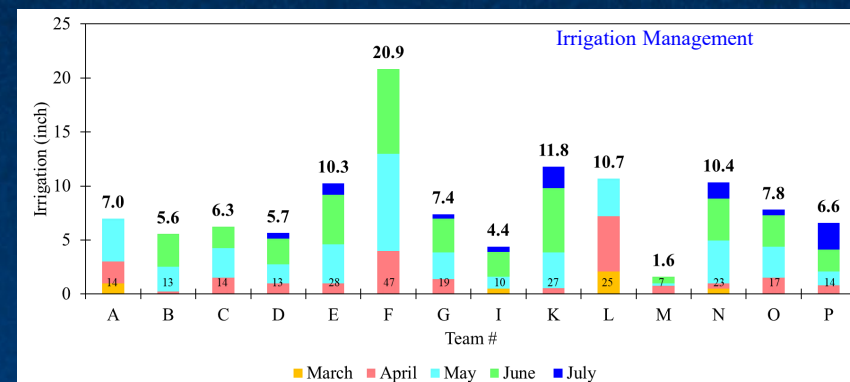
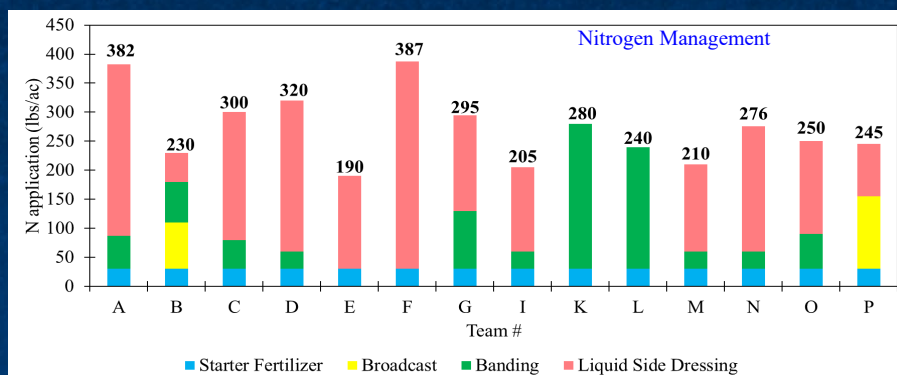


Management decisions


- Hybrid Selection
- Seeding Rate
- Irrigation
- Nitrogen
- Insurance Selection
- Grain Marketing

Research: Dr. Sharma

Florida Stakeholder Engagement Program (Florida STEP)



Research: Dr. Sharma

A series of horizontal orange lines of varying lengths are arranged in a symmetrical, vertical pattern around the central text, resembling a stylized staircase or a decorative border.

Strawberry and Blueberry Advisory System

Strawberry Advisory System

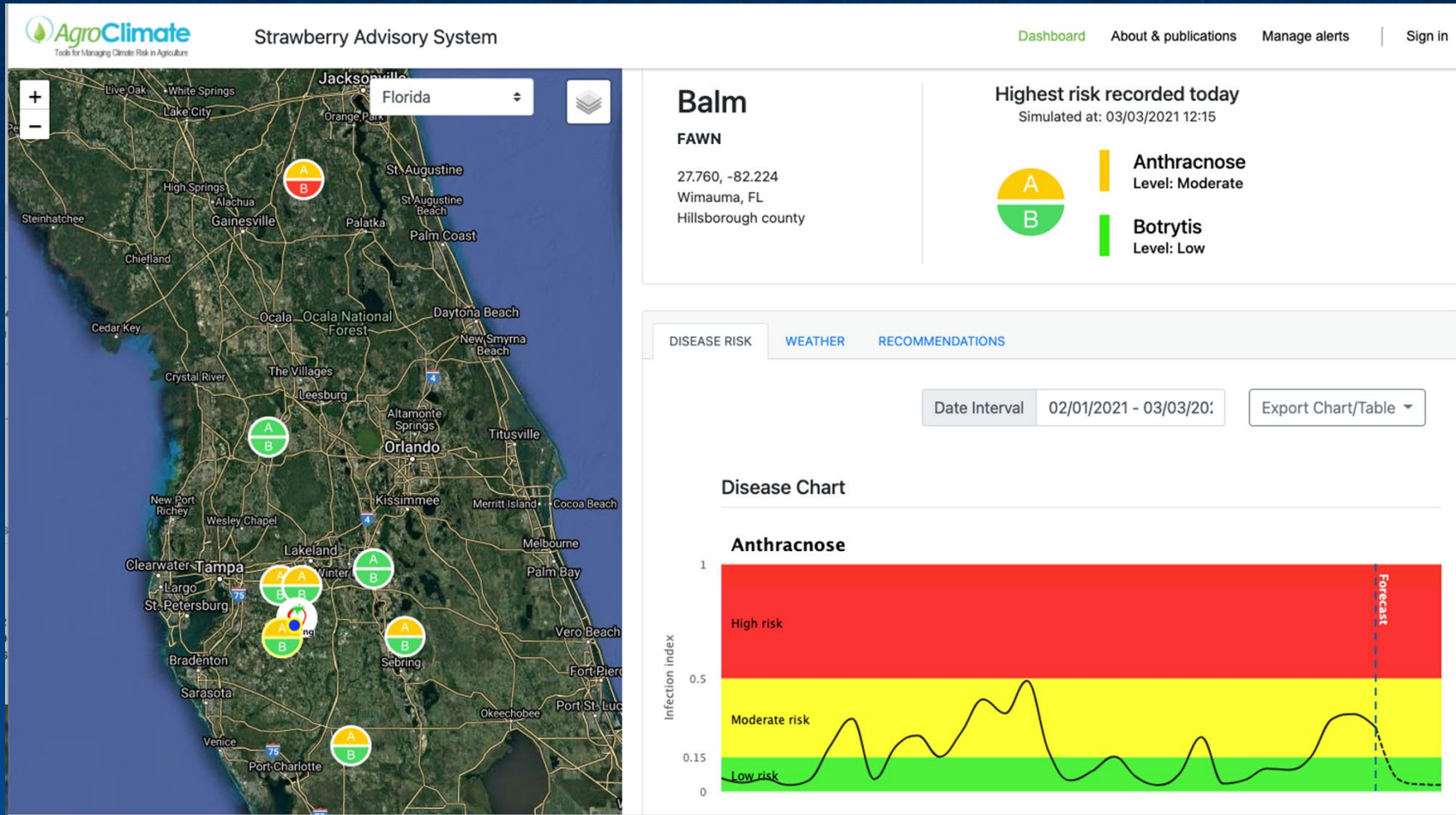
Weather-driven decisions that may need access to information while on the field for immediate action are suitable for mobile- phone apps.



- SAS has been widely adopted by growers.
- It's guided fungicide applications provide comparable disease management with up to 50% reduction in fungicide use compared to current practices.
- SAS has been shown to save Florida strawberry growers \$1.7 million a year.

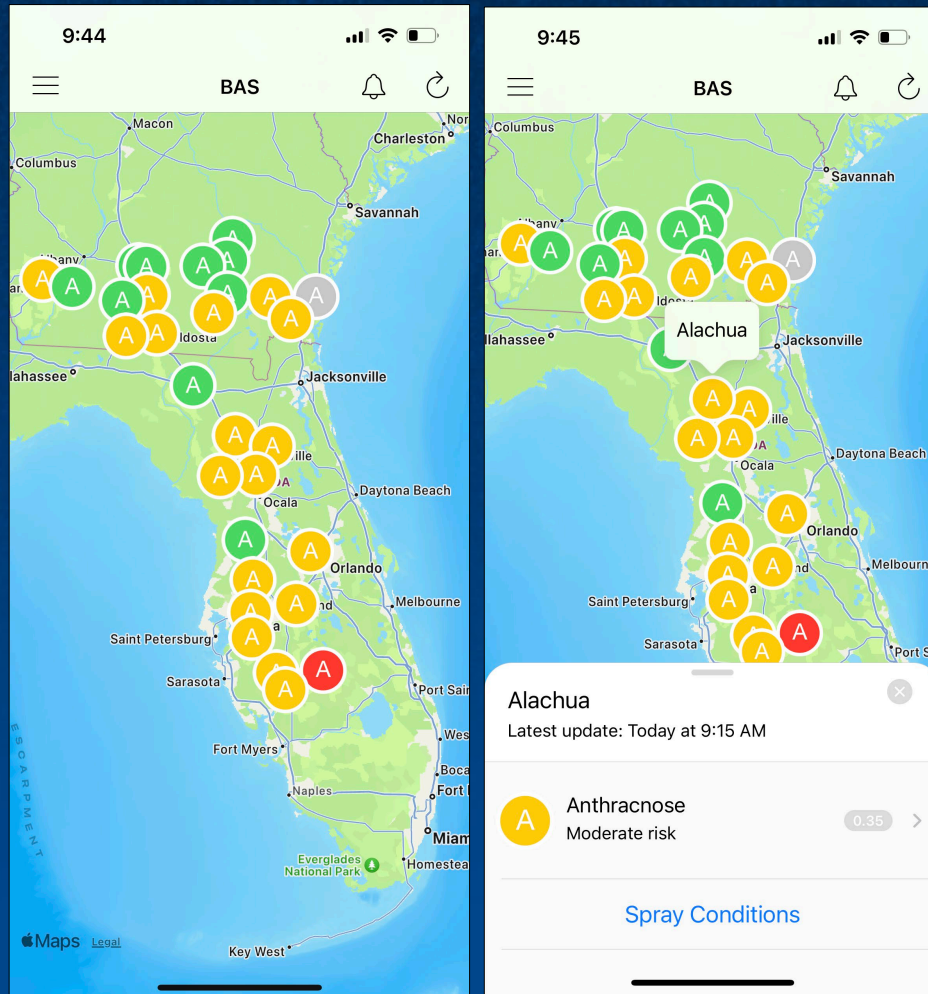
Research: Dr. Fraisse

Strawberry Advisory System



Research: Dr. Fraisse

Blueberry Advisory System



The Blueberry Advisory System (BAS) was recently launched to alert Florida blueberry growers when environmental conditions are favorable for the development of anthracnose fruit rot (AFR).

It serves blueberry growers in Florida and Georgia and will help them reduce costs and improve disease management.

Research: Dr. Fraisse

A series of horizontal orange lines of varying lengths are arranged in a staggered, vertical pattern in the center of the slide, framing the title.

Two-Spotted Mite Detection

Two-Spotted Mite Detection



- Labor intensive to do by eye and hand
- Artificial Intelligence algorithm with smartphone can provide estimate of presence and density
- System costs around \$300



Irrigation

IrrigMonitor

IrrigMonitor features:

- Centralized platform showing data collected in the field
- Integrates data from various manufacturers and sources

User Friendly interface for real-time insights:

- With personalized displays the grower can select the most appropriate features for scheduling
- Growers with and without irrigation control can use the software

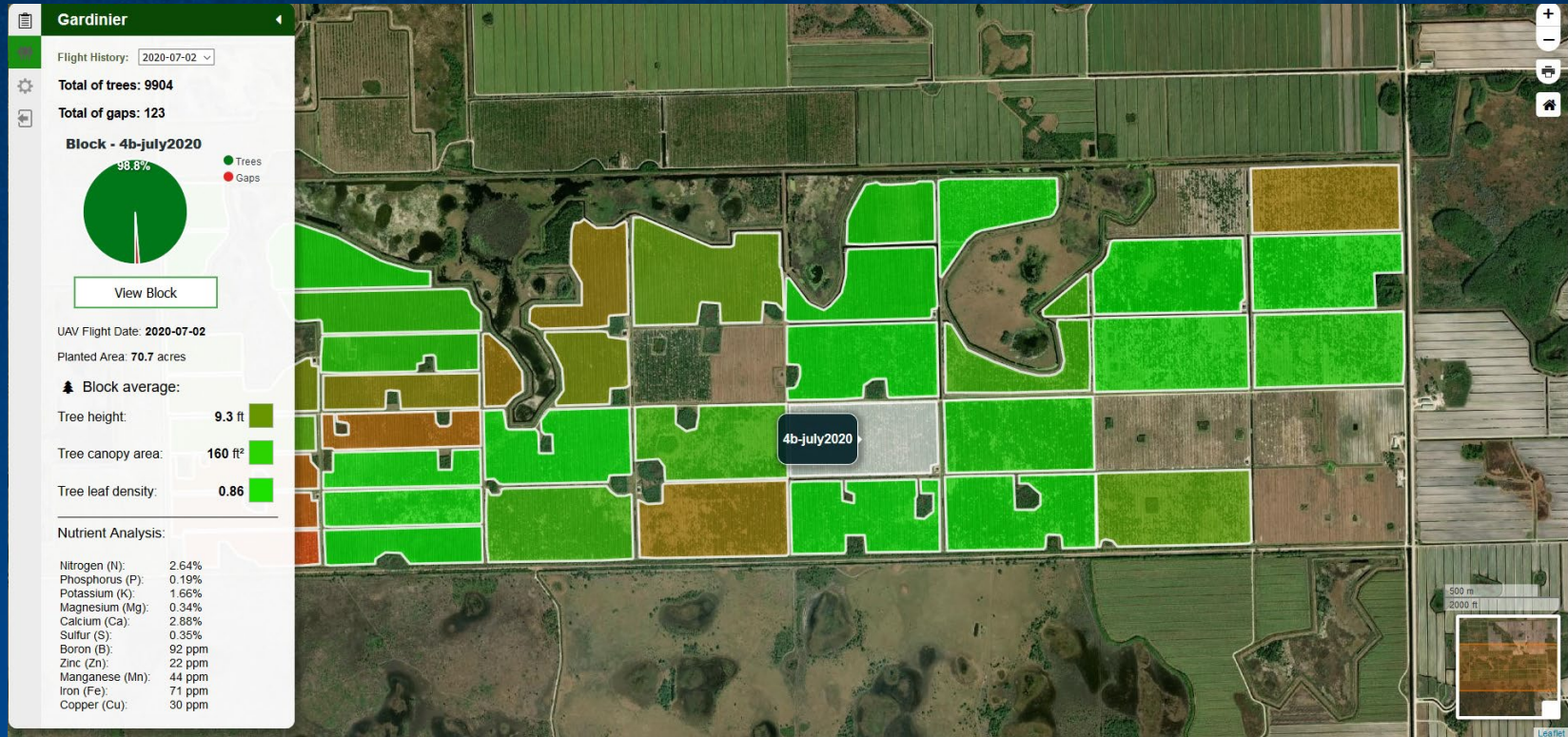


The slide features a dark blue background with a thick orange border. In the center, the text "AI-Enabled Technologies" is written in a bold, white, sans-serif font. The text is flanked by several horizontal orange lines of varying lengths, some positioned above and some below the text, creating a symmetrical, abstract design.

AI-Enabled Technologies

Agroview - farm analytics

- Product created from IFAS Research that is now commercialized
- Uses drone data to create data maps for growers



Agroview - farm analytics



- | Manual data collection | UAV-based with Agroview |
|-----------------------------|-------------------------|
| • 800 trees | • 5,000 trees |
| • 30% error rate | • 95-97% accuracy |
| • 8 hours sample collection | • 30 min flight |
| • 4 people | • 1 person |
| • 2 weeks lab analysis | • 5 min analysis |
| • Estimated cost: \$10,500 | • Estimated cost: \$100 |

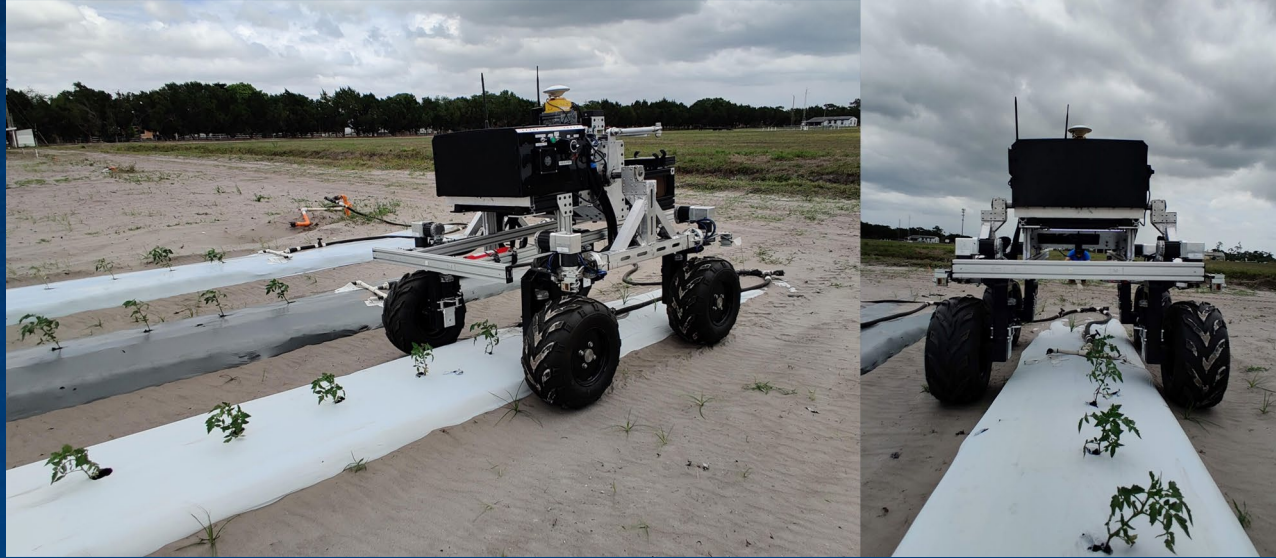
Robotics

Autonomous Data Collection for Scouting



- Scouting robot provides images for detecting weeds, pests, and diseases
- Using a robot provides more complete coverage and can obtain images that can be used for multiple purposes
- Reduces labor time and costs


Precision Weed Management



- The project will develop, integrate, and apply novel technologies to provide the specialty crop industries with a commercially viable precision sprayer at a lower cost (affordable to medium and small level growers).
- The project will reduce dependence on labor (for scouting), use of herbicides (up to 70-90%), risk of crop damage, environmental pollution and contamination of the edible products.



Thank you



University of Florida
Institute of Food and Agricultural Sciences
Agricultural and Biological Engineering
Kati Migliaccio
klwhite@ufl.edu

The Florida Senate
APPEARANCE RECORD

Deliver both copies of this form to
Senate professional staff conducting the meeting

Dec 12, 2023

Meeting Date

Senate Agriculture

Committee

Tab 4

Bill Number or Topic

Amendment Barcode (if applicable)

Name

Kati Migliaccio

Phone

305-484-3638

Address

Street

Gainesville

City

State

Zip

Email

klwhite@ufl.edu

Speaking: ☐ For ☐ Against ☒ Information

OR

Waive Speaking: ☐ In Support ☐ Against

PLEASE CHECK ONE OF THE FOLLOWING:



I am appearing without
compensation or sponsorship.



I am a registered lobbyist,
representing:



I am not a lobbyist, but received
something of value for my appearance
(travel, meals, lodging, etc.),
sponsored by:

While it is a tradition to encourage public testimony, time may not permit all persons wishing to speak to be heard at this hearing. Those who do speak may be asked to limit their remarks so that as many persons as possible can be heard. If you have questions about registering to lobby please see Fla. Stat. §11.045 and Joint Rule 1. [2020-2022 Joint Rules.pdf \(flsenate.gov\)](#)

This form is part of the public record for this meeting.

S-001 (08/10/2021)

CourtSmart Tag Report

Room: SB 301

Case No.:

Type:

Caption: Senate Committee on Agriculture

Judge:

Started: 12/12/2023 4:00:33 PM

Ends: 12/12/2023 5:35:27 PM

Length: 01:34:55

4:00:34 PM	Chair Collins calls meeting to order
4:01:19 PM	Roll call, quorum is present
4:01:32 PM	Pledge of Allegiance
4:02:12 PM	Chair Collins makes opening remarks
4:02:47 PM	Tab 1, Presentation by the USDA
4:03:04 PM	Command Sergeant Major Monshi Ramdass
4:28:37 PM	Questions:
4:28:40 PM	Senator Simon
4:29:02 PM	Sgt. Ramdass
4:30:20 PM	Senator Simon
4:31:49 PM	Chair Collins
4:32:31 PM	Tab 2, Presentation by the Future Farmers of America (FFA)
4:33:14 PM	Kaylee Ehrisman, FFA State President
4:34:39 PM	Jenna Larson, FFA State Secretary
4:37:14 PM	Kaylee Ehrisman
4:39:46 PM	Jenna Larson
4:39:52 PM	Kaylee Ehrisman
4:42:49 PM	Jenna Larson
4:45:49 PM	Questions:
4:46:52 PM	Senator Rouson
4:48:09 PM	Tab 3, Overview of Florida's Beef Industry
4:48:46 PM	Whitnie Yoder, Florida Cattlemen's Association
4:59:33 PM	Comments:
4:59:40 PM	Senator Simon
5:02:11 PM	Recording Paused
5:08:27 PM	Recording Resumed
5:08:57 PM	Pat Durden
5:11:35 PM	Chair Collins
5:11:57 PM	Tab 4, Presentation on Technology in Agriculture by UF/IFAS
5:12:20 PM	Dr. Kati Migliaccio
5:28:25 PM	Chair Collins
5:28:44 PM	Dr. Migliaccio
5:29:08 PM	Chair Collins
5:30:01 PM	Dr. Migliaccio
5:30:13 PM	Chair Collins
5:30:34 PM	Senator Simon
5:31:02 PM	Dr. Migliaccio
5:31:47 PM	Senator Simon
5:31:51 PM	Chair Collins
5:32:01 PM	Dr. Migliaccio
5:32:17 PM	Chair Collins
5:33:41 PM	Closing remarks
5:34:40 PM	Senator Rouson
5:34:59 PM	Senator Boyd moves to adjourn
5:35:08 PM	Meeting adjourned



THE FLORIDA SENATE

Tallahassee, Florida 32399-1100

COMMITTEES:

Appropriations Committee on Agriculture,
Environment, and General Government, *Vice Chair*
Agriculture
Community Affairs
Education Pre-K -12
Finance and Tax
Fiscal Policy

SELECT COMMITTEE:

Select Committee on Resiliency

SENATOR LORI BERMAN

26th District

December 11, 2023

Dear President Passidomo,

Please excuse my absence from this week's committee meetings. I have a personal obligation and will be unable to attend. Please reach out with any questions.

All the best,

Lori

REPLY TO:

- ☐ 2300 High Ridge Road, Suite 161, Boynton Beach, Florida 33426 (561) 292-6014 FAX: (888) 284-6491
- ☐ 216 Senate Building, 404 South Monroe Street, Tallahassee, Florida 32399-1100 (850) 487-5026

Senate's Website: www.flsenate.gov

KATHLEEN PASSIDOMO
President of the Senate

DENNIS BAXLEY
President Pro Tempore



THE FLORIDA SENATE

Tallahassee, Florida 32399-1100

COMMITTEES:

Agriculture
Appropriations
Appropriations Committee on Criminal
and Civil Justice
Appropriations Committee on Health
and Human Services
Children, Families, and Elder Affairs
Community Affairs
Military & Veterans Affairs, Space and
Domestic
Security
Rules

SENATOR DENNIS BAXLEY
President Pro Tempore
13th District

December 11, 2023

The Honorable Chairman Jay Collins
304 Senate Office Building
404 South Monroe Street
Tallahassee, FL 32399

Dear Chairman Collins,

I am requesting to be excused from the Agriculture Committee Meeting, scheduled on December 12th, in order to attend a meeting elsewhere in the state.

I appreciate your favorable consideration.

Onward & Upward,

A handwritten signature in blue ink that reads "Dennis Baxley".

Senator Dennis Baxley
Senate District 13

DKB/dd

cc: Katherine Becker, Staff Director
Evan Denny

REPLY TO:

- ☐ 206 South Hwy 27/441, Lady Lake, Florida 32159 (352) 750-3133
- ☐ 404 Senate Building, 404 South Monroe Street, Tallahassee, Florida 32399-1100 (850) 487-5013

Senate's Website: www.flsenate.gov

KATHLEEN PASSIDOMO
President of the Senate

DENNIS BAXLEY
President Pro Tempore