

The Florida Senate  
**COMMITTEE MEETING EXPANDED AGENDA**  
**BUDGET SUBCOMMITTEE ON EDUCATION PRE-K - 12**  
**APPROPRIATIONS**  
**Senator Simmons, Chair**  
**Senator Montford, Vice Chair**

**MEETING DATE:** Thursday, February 2, 2012

**TIME:** 8:00 —9:45 a.m.

**PLACE:** *Pat Thomas Committee Room, 412 Knott Building*

**MEMBERS:** Senator Simmons, Chair; Senator Montford, Vice Chair; Senators Detert, Dockery, Flores, Lynn, Ring, Siplin, and Wise

TAB		BILL NO. and INTRODUCER	BILL DESCRIPTION and SENATE COMMITTEE ACTIONS	COMMITTEE ACTION
1		Review and Discussion of Fiscal Year 2012-2013 Budget Issues relating to:  Department of Education Office of Early Learning		Discussed
Other Related Meeting Documents				

# Senate PreK -12 Appropriations 2012-2013

		Base Funding							
Policy Area/Budget Entity		FTE	GR	EETF	SSTF	Other Trust	Total	Non-Rec	
1									1
2	<b>EARLY LEARNING</b>								2
3	Voluntary PreKindergarten		192,000	-	-	-	192,000	-	3
4									4
5	Early Learning Services	97.0	526,762,010	-	-	476,864,852	1,003,626,862	-	5
6									6
7	<b>PUBLIC SCHOOLS</b>								7
8	State Grants - K-12/FEFP		8,104,052,312	235,700,000	145,100,000	-	8,484,852,312	-	8
9									9
10	State Grants - K-12/Non-FEFP		68,785,143	-	-	141,339,188	210,124,331	-	10
11									11
12	Federal Grants - K-12 Programs		-	-	-	1,747,578,915	1,747,578,915	-	12
13									13
14	Ed Media & Technology Services		2,694,684	-	-	-	2,694,684	-	14
15									15
16	<b>STATE BOARD OF EDUCATION</b>	1,028.5	57,858,270	-	-	131,203,755	189,062,025	-	16
17									17
18									18
19									19
20	<b>TOTAL, PUBLIC SCHOOLS</b>	1,125.5	8,760,344,419	235,700,000	145,100,000	2,496,986,710	11,638,131,129	-	20

# Early Learning - PreKindergarten Education

		Base Funding						
Appropriation Category		GR	EETF	SSTF	Other Trust	Total	Non-Rec	
1	G/A - VOLUNTARY PREKINDERGARTEN PROGRAM	384,606,382				384,606,382	-	1
2	Startup Budget Adjustments	(384,606,382)				(384,606,382)	-	2
3						-	-	3
4	<b>TOTAL, VOLUNTARY PREKINDERGARTEN PROGRAM</b>	-	-	-	-	-	-	4
5								5
6	G/A-EARLY LEARNING STDS/ACCOUNTABILITY	192,000				192,000	-	6
7						-	-	7
8	<b>TOTAL, G/A-EARLY LEARNING STDS/ACCOUNTABILITY</b>	192,000	-	-	-	192,000	-	8
9								9
10	<b>TOTAL, PREKINDERGARTEN EDUCATION</b>	192,000	-	-	-	192,000	-	10

# Early Learning Services

		Base Funding							
Appropriation Category		FTE	GR	EETF	SSTF	Other Trust	Total	Non-Rec	
1	<b>SALARIES AND BENEFITS</b>	97.0	2,336,648			2,313,048	4,649,696	-	1
2	Startup Budget Adjustments		1,168,325			1,156,524	2,324,849	-	2
3							-	-	3
4	<b>TOTAL, SALARIES AND BENEFITS</b>	97.0	3,504,973	-	-	3,469,572	6,974,545	-	4
5									5
6	<b>OTHER PERSONAL SERVICES</b>		1,333			58,000	59,333	-	6
7	Startup Budget Adjustments		667			29,000	29,667	-	7
8							-	-	8
9	<b>TOTAL, OTHER PERSONAL SERVICES</b>		2,000	-	-	87,000	89,000	-	9
10									10
11	<b>EXPENSES</b>		479,526			860,167	1,339,693	-	11
12	Startup Budget Adjustments		239,764			299,633	539,397	-	12
13							-	-	13
14	<b>TOTAL, EXPENSES</b>		719,290	-	-	1,159,800	1,879,090	-	14
15									15
16	<b>G/A - PROJECTS, CONTRACTS, AND GRANTS</b>					450,000	450,000	-	16
17	Startup Budget Adjustments					50,000	50,000	-	17
18							-	-	18
19	<b>TOTAL, PROJECTS, CONTRACTS, AND GRANTS</b>		-	-	-	500,000	500,000	-	19
20									20
21	<b>OPERATING CAPITAL OUTLAY</b>		3,857			10,000	13,857	-	21
22	Startup Budget Adjustments		1,928			5,000	6,928	-	22
23							-	-	23
24	<b>TOTAL, OPERATING CAPITAL OUTLAY</b>		5,785	-	-	15,000	20,785	-	24
25									25
26	<b>G/A - CONTRACTED SERVICES</b>		96,309			269,290	365,599	-	26
27	Startup Budget Adjustments		48,155			30,710	78,865	-	27
28							-	-	28
29	<b>TOTAL, G/A - CONTRACTED SERVICES</b>		144,464	-	-	300,000	444,464	-	29
30									30
31	<b>G/A - SCHOOL READINESS</b>		132,516,235			326,099,737	458,615,972	-	31
32	Startup Budget Adjustments		5,000,000			144,340,253	149,340,253	-	32
33							-	-	33
34	<b>TOTAL, SCHOOL READINESS</b>		137,516,235	-	-	470,439,990	607,956,225	-	34
35									35
36	<b>G/A - DATA SYSTEMS FOR SCHOOL READINESS</b>		160,397			2,268,576	2,428,973	-	36
37	Startup Budget Adjustments		80,198			(1,400,173)	(1,319,975)	-	37
38							-	-	38
39	<b>TOTAL, DATA SYSTEMS FOR SCHOOL READINESS</b>		240,595	-	-	868,403	1,108,998	-	39
40									40

# Early Learning Services

		Base Funding							
Appropriation Category		FTE	GR	EETF	SSTF	Other Trust	Total	Non-Rec	
41	RISK MANAGEMENT INSURANCE						-	-	41
42	Startup Budget Adjustments		6,433			7,123	13,556	-	42
43							-	-	43
44	TOTAL, RISK MANAGEMENT INSURANCE		6,433	-	-	7,123	13,556	-	44
45									45
46	G/A - VOLUNTARY PREKINDERGARTEN PROGRAM		288,454,787				288,454,787	-	46
47	Startup Budget Adjustments		96,151,595				96,151,595	-	47
48							-	-	48
49	TOTAL, G/A - VOLUNTARY PREKINDERGARTEN PROGRAM		384,606,382	-	-	-	384,606,382	-	49
50									50
51	TR/DMS/HR SERVICES STW CONTRACT		10,568			5,252	15,820	-	51
52	Startup Budget Adjustments		5,285			2,627	7,912	-	52
53							-	-	53
54	TOTAL, TR/DMS/HR SERVICES STW CONTRACT		15,853	-	-	7,879	23,732	-	54
55									55
56	STATE OPERATIONS - ARRA 2009					15,187	15,187	-	56
57	Startup Budget Adjustments - Deduct Nonrecurring					(15,187)	(15,187)	-	57
58							-	-	58
59	TOTAL, STATE OPERATIONS - ARRA 2009		-	-	-	-	-	-	59
60									60
61	G/A - CONTRACTED SERVICES - ARRA 2009					2,109,675	2,109,675	-	61
62	Startup Budget Adjustments - Deduct Nonrecurring					(2,109,675)	(2,109,675)	-	62
63							-	-	63
64	TOTAL, G/A - CONTRACTED SERVICES - ARRA 2009		-	-	-	-	-	-	64
65									65
66	SALARIES AND BENEFITS - ARRA 2009					155,680	155,680	-	66
67	Startup Budget Adjustments - Deduct Nonrecurring					(155,680)	(155,680)	-	67
68							-	-	68
69	TOTAL, SALARIES AND BENEFITS - ARRA 2009		-	-	-	-	-	-	69
70									70
71	EARLY LEARNING INFO SYSTEM DEVELOPMENT (ELIS)					12,733,563	12,733,563	-	71
72	Startup Budget Adjustments - Deduct Nonrecurring					(12,733,563)	(12,733,563)	-	72
73							-	-	73
74	TOTAL, EARLY LEARNING INFO SYSTEM DEVELOPMENT (ELIS)		-	-	-	-	-	-	74
75									75
76	DATA PROCESSING SERVICES/SSRC					8,069	8,069	-	76
77	Startup Budget Adjustments					2,016	2,016	-	77
78							-	-	78
79	TOTAL, DP SERVICES/SOUTHWOOD		-	-	-	10,085	10,085	-	79
80									80

# Early Learning Services

		Base Funding							
Appropriation Category		FTE	GR	EETF	SSTF	Other Trust	Total	Non-Rec	
81	<b>TOTAL, SCHOOL READINESS SERVICES</b>	97.0	526,762,010	-	-	476,864,852	1,003,626,862	-	81
82									82
83	<b>SALARY RATE ADJUSTMENT</b>						5,405,535	-	83
84							-		84
85	<b>TOTAL, SALARY RATE ADJUSTMENTS</b>		-	-	-	-	5,405,535	-	85

# Division of Public Schools - FEFP

		Base Funding						
Appropriation Category		GR	EETF	SSTF	Other Trust	Total	Non-Rec	
1	G/A-FEFP	5,366,524,887	12,327,001	282,938,902	-	5,661,790,790	-	1
2	Startup Budget Adjustments - Deduct Nonrecurring			(224,000,000)		(224,000,000)	-	2
3						-	-	3
4	<b>TOTAL, G/A-FEFP</b>	<b>5,366,524,887</b>	<b>12,327,001</b>	<b>58,938,902</b>	<b>-</b>	<b>5,437,790,790</b>	<b>-</b>	4
5								5
6	G/A-CLASS SIZE REDUCTION	2,737,527,425	103,776,356	86,161,098		2,927,464,879	-	6
7						-	-	7
8	<b>TOTAL, G/A-CLASS SIZE REDUCTION</b>	<b>2,737,527,425</b>	<b>103,776,356</b>	<b>86,161,098</b>	<b>-</b>	<b>2,927,464,879</b>	<b>-</b>	8
9								9
10	G/A-DIST LOTTERY/SCHOOL RECOGNITION		119,596,643			119,596,643	-	10
11						-	-	11
12	<b>TOTAL, G/A-DIST LOTTERY/SCHL RECOGNITION</b>	<b>-</b>	<b>119,596,643</b>	<b>-</b>	<b>-</b>	<b>119,596,643</b>	<b>-</b>	12
13								13
14	<b>TOTAL FEFP</b>	<b>8,104,052,312</b>	<b>235,700,000</b>	<b>145,100,000</b>	<b>-</b>	<b>8,484,852,312</b>	<b>-</b>	14

# Division of Public Schools - State Grants/Non - FEFP

		Base Funding						
Appropriation Category		GR	EETF	SSTF	Other Trust	Total	Non-Rec	
1	G/A-INSTRUCTIONAL MATERIALS	1,145,000				1,145,000	-	1
2	Recurring Funds:					-	-	2
3	Sunlink Library Database	85,000				85,000	-	3
4	Learning thru Listening	760,000				760,000	-	4
5	Panhandle Area Education Consortium	300,000				300,000	-	5
6						-	-	6
7	<b>TOTAL, G/A-INSTRUCTIONAL MATERIALS</b>	<b>1,145,000</b>	<b>-</b>	<b>-</b>	<b>-</b>	<b>1,145,000</b>	<b>-</b>	7
8								8
9	G/A-READING INITIATIVES	750,000				750,000	-	9
10						-	-	10
11	<b>TOTAL, G/A- READING INITIATIVES</b>	<b>750,000</b>	<b>-</b>	<b>-</b>	<b>-</b>	<b>750,000</b>	<b>-</b>	11
12								12
13	G/A-ASSIST LOW PERFORMING SCHOOLS	3,500,000				3,500,000	-	13
14						-	-	14
15	<b>TOTAL, G/A- ASSIST LOW PERFORMING SCHOOLS</b>	<b>3,500,000</b>	<b>-</b>	<b>-</b>	<b>-</b>	<b>3,500,000</b>	<b>-</b>	15
16								16
17	G/A-MENTORING/STUDENT ASSISTANCE	8,820,147				8,820,147	-	17
18	Recurring Funds:					-	-	18
19	Best Buddies	586,477				586,477	-	19
20	Take Stock in Children	3,400,000				3,400,000	-	20
21	Big Brothers Big Sisters	1,930,248				1,930,248	-	21
22	Florida Alliance of Boys and Girls Clubs	1,538,450				1,538,450	-	22
23	YMCA State Alliance	764,972				764,972	-	23
24	Teen Trendsetters	200,000				200,000	-	24
25	Nonrecurring Funds:					-	-	25
26	Take Stock in Children	400,000				400,000	-	26
27	Startup Budget Adjustments - Deduct Nonrecurring	(400,000)				(400,000)	-	27
28						-	-	28
29	<b>TOTAL, G/A- MENTORING/STUDENT ASSISTANCE</b>	<b>8,420,147</b>	<b>-</b>	<b>-</b>	<b>-</b>	<b>8,420,147</b>	<b>-</b>	29
30								30
31	G/A-COLLEGE REACH OUT PROGRAM	1,000,000				1,000,000	-	31
32						-	-	32
33	<b>TOTAL, G/A-COLLEGE REACH OUT PROGRAM</b>	<b>1,000,000</b>	<b>-</b>	<b>-</b>	<b>-</b>	<b>1,000,000</b>	<b>-</b>	33
34								34
35	G/A-DIAG/LEARNING RESOURCE CENTERS	1,982,626				1,982,626	-	35
36	Recurring Funds:					-	-	36
37	University of Florida	396,525				396,525	-	37
38	University of Miami	396,525				396,525	-	38
39	Florida State University	396,525				396,525	-	39
40	University of South Florida	396,525				396,525	-	40



# Division of Public Schools - State Grants/Non - FEFP

		Base Funding						
Appropriation Category		GR	EETF	SSTF	Other Trust	Total	Non-Rec	
41	UF Health Science Center at Jacksonville	396,526				396,526	-	41
42						-	-	42
43	<b>TOTAL, G/A-DIAG/LEARNING RESOURCE CENTERS</b>	<b>1,982,626</b>	<b>-</b>	<b>-</b>	<b>-</b>	<b>1,982,626</b>	<b>-</b>	43
44								44
45	G/A-NEW WORLD SCHOOL OF THE ARTS	400,000				400,000	-	45
46						-	-	46
47	<b>TOTAL, G/A-NEW WORLD SCHOOL OF THE ARTS</b>	<b>400,000</b>	<b>-</b>	<b>-</b>	<b>-</b>	<b>400,000</b>	<b>-</b>	47
48								48
49	G/A-SCHOOL DISTRICT MATCHING GRANT	1,393,891				1,393,891	-	49
50						-	-	50
51	<b>TOTAL, G/A-SCHOOL DISTRICT MATCHING GRANT</b>	<b>1,393,891</b>	<b>-</b>	<b>-</b>	<b>-</b>	<b>1,393,891</b>	<b>-</b>	51
52								52
53	TEACHER DEATH BENEFITS	18,000				18,000	-	53
54						-	-	54
55	<b>TOTAL, TEACHER DEATH BENEFITS</b>	<b>18,000</b>	<b>-</b>	<b>-</b>	<b>-</b>	<b>18,000</b>	<b>-</b>	55
56								56
57	RISK MANAGEMENT INSURANCE	529,117			39,277	568,394	-	57
58	Startup Budget Adjustments	49,751			8,343	58,094	-	58
59						-	-	59
60	<b>TOTAL, RISK MANAGEMENT INSURANCE</b>	<b>578,868</b>	<b>-</b>	<b>-</b>	<b>47,620</b>	<b>626,488</b>	<b>-</b>	60
61								61
62	G/A- AUTISM PROGRAM	4,975,425				4,975,425	-	62
63	Recurring Funds:					-	-	63
64	USF Florida Mental Health Institute	872,630				872,630	-	64
65	UF College of Medicine	605,129				605,129	-	65
66	University of Central Florida	747,284				747,284	-	66
67	UM Pediatrics including Nova	945,826				945,826	-	67
68	Florida Atlantic University	473,254				473,254	-	68
69	UF at Jacksonville	630,609				630,609	-	69
70	FSU	700,693				700,693	-	70
71						-	-	71
72	<b>TOTAL, G/A-AUTISM PROGRAM</b>	<b>4,975,425</b>	<b>-</b>	<b>-</b>	<b>-</b>	<b>4,975,425</b>	<b>-</b>	72
73								73
74	G/A-REGIONAL ED CONSORTIUM SERVICES	1,445,390				1,445,390	-	74
75						-	-	75
76	<b>TOTAL, G/A-REGIONAL ED CONSORTIUM SERVICES</b>	<b>1,445,390</b>	<b>-</b>	<b>-</b>	<b>-</b>	<b>1,445,390</b>	<b>-</b>	76
77								77
78	TEACHER PROFESSIONAL DEVELOPMENT	222,051			134,580,906	134,802,957	-	78
79	Recurring Funds:					-	-	79
80	FL Association of District Superintendents Training	167,713				167,713	-	80

# Division of Public Schools - State Grants/Non - FEFP

		Base Funding						
Appropriation Category		GR	EETF	SSTF	Other Trust	Total	Non-Rec	
81	Principal of the Year	29,426				29,426	-	81
82	Teacher of the Year	18,730				18,730	-	82
83	School Related Personnel of the Year	6,182				6,182	-	83
84						-	-	84
85	<b>TOTAL, TEACHER PROFESSIONAL DEVELOPMENT</b>	<b>222,051</b>	<b>-</b>	<b>-</b>	<b>134,580,906</b>	<b>134,802,957</b>	<b>-</b>	85
86								86
87	<b>G/A-SCHL/INSTRUCTIONAL ENHANCEMENTS</b>	<b>1,969,592</b>				<b>1,969,592</b>	<b>-</b>	87
88	Recurring Funds:					-	-	88
89	State Science Fair	42,032				42,032	-	89
90	Academic Tourney	55,476				55,476	-	90
91	Arts for a Complete Education	110,952				110,952	-	91
92	Project to Advance School Success (PASS)	508,983				508,983	-	92
93	Learning for Life	869,813				869,813	-	93
94	Girl Scouts of Florida	267,635				267,635	-	94
95	Black Male Explorers	114,701				114,701	-	95
96						-	-	96
97	<b>TOTAL, G/A-SCHL/INSTRUCTIONAL ENHANCEMENTS</b>	<b>1,969,592</b>	<b>-</b>	<b>-</b>	<b>-</b>	<b>1,969,592</b>	<b>-</b>	97
98								98
99	<b>G/A-EXCEPTIONAL EDUCATION</b>	<b>1,013,726</b>			<b>2,333,354</b>	<b>3,347,080</b>	<b>-</b>	99
100						-	-	100
101	<b>TOTAL, G/A-EXCEPTIONAL EDUCATION</b>	<b>1,013,726</b>	<b>-</b>	<b>-</b>	<b>2,333,354</b>	<b>3,347,080</b>	<b>-</b>	101
102								102
103	<b>FL SCHOOL FOR THE DEAF &amp; THE BLIND</b>	<b>41,212,914</b>			<b>4,407,913</b>	<b>45,620,827</b>	<b>-</b>	103
104	Startup Budget Adjustments	(1,456,959)			(69,059)	(1,526,018)	-	104
105						-	-	105
106	<b>TOTAL, FL SCHOOL FOR THE DEAF &amp; THE BLIND</b>	<b>39,755,955</b>	<b>-</b>	<b>-</b>	<b>4,338,854</b>	<b>44,094,809</b>	<b>-</b>	106
107								107
108	<b>TR/DMS/HR SVCS/STW CONTRACT</b>	<b>22,930</b>			<b>2,495</b>	<b>25,425</b>	<b>-</b>	108
109	Startup Budget Adjustments	191,542			35,959	227,501	-	109
110						-	-	110
111	<b>TOTAL, TR/DMS/HR SVCS/STW CONTRACT</b>	<b>214,472</b>	<b>-</b>	<b>-</b>	<b>38,454</b>	<b>252,926</b>	<b>-</b>	111
112								112
113	<b>TOTAL, STATE GRANTS/NON-FEFP</b>	<b>68,785,143</b>	<b>-</b>	<b>-</b>	<b>141,339,188</b>	<b>210,124,331</b>	<b>-</b>	113

# Division of Public Schools Federal Grants - K-12 Programs

		Base Funding						
Appropriation Category		GR	EETF	SSTF	Other Trust	Total	Non-Rec	
1	G/A-PROJECTS, CONTRACTS, & GRANTS				3,999,420	3,999,420	-	1
2						-	-	2
3	<b>TOTAL, G/A-PROJECTS, CONTRACTS, &amp; GRANTS</b>	-	-	-	3,999,420	3,999,420	-	3
4								4
5	G/A-FEDERAL GRANTS & AIDS				1,512,712,755	1,512,712,755	-	5
6	Recurring Funds:					-	-	6
7	African American Task Force				100,000	100,000	-	7
8	Florida Holocaust Museum				100,000	100,000	-	8
9						-	-	9
10	<b>TOTAL, G/A-FEDERAL GRANTS &amp; AIDS</b>	-	-	-	1,512,912,755	1,512,912,755	-	10
11								11
12	G/A-SCHOOL LUNCH PROGRAM				942,307,194	942,307,194	-	12
13	Transfer from DOE to Dept of Agriculture & Consumer Services				(942,307,194)	(942,307,194)	-	13
14						-	-	14
15	<b>TOTAL, G/A-SCHOOL LUNCH PROGRAM</b>	-	-	-	-	-	-	15
16								16
17	G/A-SCHOOL LUNCH PROG/STATE MATCH	16,886,046				16,886,046	-	17
18	Transfer from DOE to Dept of Agriculture & Consumer Services	(16,886,046)				(16,886,046)	-	18
19						-	-	19
20	<b>TOTAL, G/A-SCHOOL LUNCH PROG/STATE MATCH</b>	-	-	-	-	-	-	20
21								21
22	DOMESTIC SECURITY				5,409,971	5,409,971	-	22
23						-	-	23
24	<b>TOTAL, DOMESTIC SECURITY</b>	-	-	-	5,409,971	5,409,971	-	24
25								25
26	G/A-STRAT EDUC INITIATIVES				196,922,877	196,922,877	-	26
27						-	-	27
28	<b>TOTAL, G/A-STRAT EDUC INITIATIVES</b>	-	-	-	196,922,877	196,922,877	-	28
29								29
30	G/A-PARCC				28,333,892	28,333,892	-	30
31						-	-	31
32	<b>TOTAL, G/A-PARCC</b>	-	-	-	28,333,892	28,333,892	-	32
33								33
34	<b>TOTAL, FEDERAL GRANTS K-12 PROGRAMS</b>	-	-	-	1,747,578,915	1,747,578,915	-	34

# Division of Public Schools - Educational Media & Technology Services

		Base Funding						
Appropriation Category		GR	EETF	SSTF	Other Trust	Total	Non-Rec	
1	CAPITOL TECHNICAL CENTER	149,624				149,624	-	1
2						-	-	2
3	<b>TOTAL, CAPITOL TECHNICAL CENTER</b>	<b>149,624</b>	<b>-</b>	<b>-</b>	<b>-</b>	<b>149,624</b>	<b>-</b>	3
4								4
5	G/A-INSTRUCTIONAL TECHNOLOGY					-	-	5
6	NEFEC Web-based Instruction for Credit Recovery	400,000				400,000	-	6
7						-	-	7
8	<b>TOTAL, G/A-INSTRUCTIONAL TECHNOLOGY</b>	<b>400,000</b>	<b>-</b>	<b>-</b>	<b>-</b>	<b>400,000</b>	<b>-</b>	8
9								9
10	G/A-PUBLIC BROADCASTING	2,645,060				2,645,060	-	10
11	Recurring Funds:					-	-	11
12	Governmental & Cultural Affairs Programming	497,522				497,522	-	12
13	Florida Channel Closed Captioning	340,862				340,862	-	13
14	Year Round Coverage - Florida Channel	1,306,676				1,306,676	-	14
15	Nonrecurring Funds:					-	-	15
16	Year Round Coverage - Florida Channel	500,000				500,000	-	16
17	Startup Budget Adjustments - Deduct Nonrecurring	(500,000)				(500,000)	-	17
18						-	-	18
19	<b>TOTAL, G/A-PUBLIC BROADCASTING</b>	<b>2,145,060</b>	<b>-</b>	<b>-</b>	<b>-</b>	<b>2,145,060</b>	<b>-</b>	19
20								20
21	<b>TOTAL, ED MEDIA &amp; TECH SERVICES</b>	<b>2,694,684</b>	<b>-</b>	<b>-</b>	<b>-</b>	<b>2,694,684</b>	<b>-</b>	21

# State Board of Education

Base Funding							
Appropriation Category	FTE	GR	EETF	SSTF	Other Trust	Total	Non-Rec
<b>SALARIES &amp; BENEFITS</b>	1,074.00	19,925,458			49,328,387	69,253,845	-
Startup Budget Adjustments		(967,952)			(2,160,378)	(3,128,330)	-
Transfer from DOE to Dept of Agriculture & Consumer Services	(45.50)				(2,580,512)	(2,580,512)	-
						-	-
<b>TOTAL, SALARIES &amp; BENEFITS</b>	1,028.50	18,957,506	-	-	44,587,497	63,545,003	-
<b>OTHER PERSONAL SERVICES</b>		227,539			2,014,766	2,242,305	-
Transfer from DOE to Dept of Agriculture & Consumer Services					(127,020)	(127,020)	-
						-	-
<b>TOTAL, OTHER PERSONAL SERVICES</b>		227,539	-	-	1,887,746	2,115,285	-
<b>EXPENSES</b>		2,702,758			14,822,023	17,524,781	-
Startup Budget Adjustments		(10,760)			(2,860)	(13,620)	-
Transfer from DOE to Dept of Agriculture & Consumer Services					(1,042,297)	(1,042,297)	-
						-	-
<b>TOTAL, EXPENSES</b>		2,691,998	-	-	13,776,866	16,468,864	-
<b>OPERATING CAPITAL OUTLAY</b>		45,970			1,669,302	1,715,272	-
Transfer from DOE to Dept of Agriculture & Consumer Services					(57,438)	(57,438)	-
						-	-
<b>TOTAL, OPERATING CAPITAL OUTLAY</b>		45,970	-	-	1,611,864	1,657,834	-
<b>ASSESSMENT &amp; EVALUATION</b>		31,422,090			55,189,575	86,611,665	-
Startup Budget Adjustments - Deduct Nonrecurring					(10,846,041)	(10,846,041)	-
						-	-
<b>TOTAL, ASSESSMENT &amp; EVALUATION</b>		31,422,090	-	-	44,343,534	75,765,624	-
<b>TRANSFER TO DIV OF ADMIN HEARINGS</b>		260,822				260,822	-
						-	-
<b>TOTAL, TRANSFER TO DIV OF ADMIN HEARINGS</b>		260,822	-	-	-	260,822	-
<b>CONTRACTED SERVICES</b>		633,162			19,102,949	19,736,111	-
Transfer from DOE to Dept of Agriculture & Consumer Services					(2,036,539)	(2,036,539)	-
						-	-
<b>TOTAL, CONTRACTED SERVICES</b>		633,162	-	-	17,066,410	17,699,572	-
<b>G/A-CHOICES PRODUCT SALES</b>					200,000	200,000	-
						-	-
<b>TOTAL, G/A-CONTRACTED SERVICES</b>		-	-	-	200,000	200,000	-

# State Board of Education

		Base Funding							
Appropriation Category		FTE	GR	EETF	SSTF	Other Trust	Total	Non-Rec	
41	ED FACILITIES RES & DEV PROJECTS					200,000	200,000	-	41
42							-	-	42
43	<b>TOTAL, ED FACILITIES RES &amp; DEV PROJECTS</b>		-	-	-	200,000	200,000	-	43
44									44
45	STUDENT FINANCIAL ASSISTANCE/MIS					460,220	460,220	-	45
46							-	-	46
47	<b>TOTAL, STUDENT FINANCIAL ASSISTANCE/MIS</b>		-	-	-	460,220	460,220	-	47
48									48
49	RISK MANAGEMENT INSURANCE		186,198			543,530	729,728	-	49
50	Startup Budget Adjustments		(33,160)			(96,776)	(129,936)	-	50
51	Transfer from DOE to Dept of Agriculture & Consumer Services					(23,904)	(23,904)	-	51
52							-	-	52
53	<b>TOTAL, RISK MANAGEMENT INSURANCE</b>		153,038	-	-	422,850	575,888	-	53
54									54
55	TR/DMS/HR SERVICES STW CONTRACT		155,980			288,974	444,954	-	55
56	Startup Budget Adjustments		(6,987)			(22,323)	(29,310)	-	56
57	Transfer from DOE to Dept of Agriculture & Consumer Services					(17,728)	(17,728)	-	57
58							-	-	58
59	<b>TOTAL, TR/DMS/HR SERVICES STW CONTRACT</b>		148,993	-	-	248,923	397,916	-	59
60									60
61	DATA PROCESSING SERVICES / EDU TECH / INFO SVCS		3,222,236			5,785,029	9,007,265	-	61
62	Startup Budget Adjustments		(70,528)			(125,523)	(196,051)	-	62
63	Transfer from DOE to Dept of Agriculture & Consumer Services					(265,628)	(265,628)	-	63
64							-	-	64
65	<b>TOTAL, DATA PROCESSING SERVICES</b>		3,151,708	-	-	5,393,878	8,545,586	-	65
66									66
67	DATA PROCESSING SERVICES/SOUTHWOOD SHARED RESOURCE CENTER					17,327	17,327	-	67
68	Startup Budget Adjustments					(247)	(247)	-	68
69							-	-	69
70	<b>TOTAL, DP SERVICES/SOUTHWOOD</b>		-	-	-	17,080	17,080	-	70
71									71
72	DATA PROCESSING SERVICES/NORTHWEST REGIONAL DATA CENTER		165,444			986,887	1,152,331	-	72
73							-	-	73
74	<b>TOTAL, DP SERVICES/NORTHWEST</b>		165,444	-	-	986,887	1,152,331	-	74
75									75
76	<b>TOTAL, STATE BOARD OF EDUCATION</b>	1,028.50	57,858,270	-	-	131,203,755	189,062,025	-	76
77									77
78	<b>SALARY RATE ADJUSTMENT</b>						52,028,583	-	78

# State Board of Education

		Base Funding							
	Appropriation Category	FTE	GR	EETF	SSTF	Other Trust	Total	Non-Rec	
79	Transfer from DOE to Dept of Agriculture & Consumer Services						(1,970,232)		79
80							-	-	80
81	TOTAL, SALARY RATE ADJUSTMENTS		-	-	-	-	50,058,351	-	81

2012-2013 Senate PreK-12 Appropriations Base Budget Overview - For Discussion Only		All Funds					General Revenue, Educational Enhancement TF & State School TF				
		2011-2012	Base	2012-2013	Prior Year	% Change	2011-2012	Base	2012-2013	Prior Year	% Change
		Total	Total	Total	Difference	from Prior	GR, EETF, SSTF	GR, EETF, SSTF	Total	Difference	from Prior
<b>Voluntary Prekindergarten</b>											
1	Transfer VPK Funds to AWI	-	-	-	-		-	-	-	-	
2	Early Learning Standards and Accountability	192,000	192,000	192,000	-	0.00%	192,000	192,000	192,000	-	0.00%
3	<b>Prekindergarten Education</b>	<b>192,000</b>	<b>192,000</b>	<b>192,000</b>	<b>-</b>	<b>0.00%</b>	<b>192,000</b>	<b>192,000</b>	<b>192,000</b>	<b>-</b>	<b>0.00%</b>
<b>Early Learning</b>											
4	Salaries and Benefits (97 FTE)	6,974,545	6,974,545	6,974,545	-	0.00%	3,504,973	3,504,973	3,504,973	-	0.00%
5	Other Personal Services (Temporary Employees)	89,000	89,000	89,000	-	0.00%	2,000	2,000	2,000	-	0.00%
6	Expenses	1,899,905	1,879,090	1,879,090	(20,815)	-1.10%	719,290	719,290	719,290	-	0.00%
7	Projects, Contracts and Grants	500,000	500,000	500,000	-	0.00%	-	-	-	-	
8	Operating Capital Outlay	20,785	20,785	20,785	-	0.00%	5,785	5,785	5,785	-	0.00%
9	Contracted Services	548,399	444,464	444,464	(103,935)	-18.95%	144,464	144,464	144,464	-	0.00%
10	School Readiness	616,762,636	607,956,225	607,956,225	(8,806,411)	-1.43%	137,516,235	137,516,235	137,516,235	-	0.00%
11	Data Systems for School Readiness	2,509,171	1,108,998	1,108,998	(1,400,173)	-55.80%	240,595	240,595	240,595	-	0.00%
12	Risk Management	13,556	13,556	13,556	-	0.00%	6,433	6,433	6,433	-	0.00%
13	Voluntary Prekindergarten Program	384,606,382	384,606,382	384,606,382	-	0.00%	384,606,382	384,606,382	384,606,382	-	0.00%
14	Transfer to DMS - HRS Purchased per Statewide Contract	23,732	23,732	23,732	-	0.00%	15,853	15,853	15,853	-	0.00%
15	State Operations - ARRA 2009	15,187	-	-	(15,187)	-100.00%	-	-	-	-	
16	Contracted Services - ARRA 2009	2,109,675	-	-	(2,109,675)	-100.00%	-	-	-	-	
17	Salaries and Benefits - ARRA 2009	155,680	-	-	(155,680)	-100.00%	-	-	-	-	
18	Early Learning Info System Development (ELIS)	12,733,563	-	-	(12,733,563)	-100.00%	-	-	-	-	
19	Southwood Shared Resource Center	10,604	10,085	10,085	(519)	-4.89%	-	-	-	-	
20	<b>Early Learning Services *</b>	<b>1,028,972,820</b>	<b>1,003,626,862</b>	<b>1,003,626,862</b>	<b>(25,345,958)</b>	<b>-2.46%</b>	<b>526,762,010</b>	<b>526,762,010</b>	<b>526,762,010</b>	<b>-</b>	<b>0.00%</b>
<b>K-12 - FEFP</b>											
21	Florida Education Finance Program	5,661,790,790	5,437,790,790	5,437,790,790	(224,000,000)	-3.96%	5,661,790,790	5,437,790,790	5,437,790,790	(224,000,000)	-3.96%
22	Class Size Reduction	2,927,464,879	2,927,464,879	2,927,464,879	-	0.00%	2,927,464,879	2,927,464,879	2,927,464,879	-	0.00%
23	District Lottery and School Recognition Program	119,596,643	119,596,643	119,596,643	-	0.00%	119,596,643	119,596,643	119,596,643	-	0.00%
24	<b>K-12 Program - FEFP</b>	<b>8,708,852,312</b>	<b>8,484,852,312</b>	<b>8,484,852,312</b>	<b>(224,000,000)</b>	<b>-2.57%</b>	<b>8,708,852,312</b>	<b>8,484,852,312</b>	<b>8,484,852,312</b>	<b>(224,000,000)</b>	<b>-2.57%</b>
<b>K-12 - Non-FEFP</b>											
25	<i>Sunlink Library Database</i>	<i>85,000</i>	<i>85,000</i>	<i>85,000</i>	<i>-</i>	<i>0.00%</i>	<i>85,000</i>	<i>85,000</i>	<i>85,000</i>	<i>-</i>	<i>0.00%</i>
26	<i>Learning thru Listening</i>	<i>760,000</i>	<i>760,000</i>	<i>760,000</i>	<i>-</i>	<i>0.00%</i>	<i>760,000</i>	<i>760,000</i>	<i>760,000</i>	<i>-</i>	<i>0.00%</i>
27	<i>Panhandle Area Education Consortium</i>	<i>300,000</i>	<i>300,000</i>	<i>300,000</i>	<i>-</i>	<i>0.00%</i>	<i>300,000</i>	<i>300,000</i>	<i>300,000</i>	<i>-</i>	<i>0.00%</i>
28	Instructional Materials	1,145,000	1,145,000	1,145,000	-	0.00%	1,145,000	1,145,000	1,145,000	-	0.00%
29	Grants to Public Schools for Reading Programs	750,000	750,000	750,000	-	0.00%	750,000	750,000	750,000	-	0.00%
30	Assistance to Low Performing Schools	3,500,000	3,500,000	3,500,000	-	0.00%	3,500,000	3,500,000	3,500,000	-	0.00%
31	<i>Best Buddies</i>	<i>586,477</i>	<i>586,477</i>	<i>586,477</i>	<i>-</i>	<i>0.00%</i>	<i>586,477</i>	<i>586,477</i>	<i>586,477</i>	<i>-</i>	<i>0.00%</i>
32	<i>Take Stock in Children</i>	<i>3,800,000</i>	<i>3,400,000</i>	<i>3,400,000</i>	<i>(400,000)</i>	<i>-10.53%</i>	<i>3,800,000</i>	<i>3,400,000</i>	<i>3,400,000</i>	<i>(400,000)</i>	<i>-10.53%</i>
33	<i>Big Brothers Big Sisters</i>	<i>1,930,248</i>	<i>1,930,248</i>	<i>1,930,248</i>	<i>-</i>	<i>0.00%</i>	<i>1,930,248</i>	<i>1,930,248</i>	<i>1,930,248</i>	<i>-</i>	<i>0.00%</i>
34	<i>Boys and Girls Clubs</i>	<i>1,538,450</i>	<i>1,538,450</i>	<i>1,538,450</i>	<i>-</i>	<i>0.00%</i>	<i>1,538,450</i>	<i>1,538,450</i>	<i>1,538,450</i>	<i>-</i>	<i>0.00%</i>
35	<i>Teen Trendsetters</i>	<i>200,000</i>	<i>200,000</i>	<i>200,000</i>	<i>-</i>	<i>0.00%</i>	<i>200,000</i>	<i>200,000</i>	<i>200,000</i>	<i>-</i>	<i>0.00%</i>
36	<i>YMCA State Alliance</i>	<i>764,972</i>	<i>764,972</i>	<i>764,972</i>	<i>-</i>	<i>0.00%</i>	<i>764,972</i>	<i>764,972</i>	<i>764,972</i>	<i>-</i>	<i>0.00%</i>
37	Mentoring/Student Assistance Initiatives	8,820,147	8,420,147	8,420,147	(400,000)	-4.54%	8,820,147	8,420,147	8,420,147	(400,000)	-4.54%
38	College Reach Out Program	1,000,000	1,000,000	1,000,000	-	0.00%	1,000,000	1,000,000	1,000,000	-	0.00%
39	<i>University of Florida</i>	<i>396,525</i>	<i>396,525</i>	<i>396,525</i>	<i>-</i>	<i>0.00%</i>	<i>396,525</i>	<i>396,525</i>	<i>396,525</i>	<i>-</i>	<i>0.00%</i>
40	<i>University of Miami</i>	<i>396,525</i>	<i>396,525</i>	<i>396,525</i>	<i>-</i>	<i>0.00%</i>	<i>396,525</i>	<i>396,525</i>	<i>396,525</i>	<i>-</i>	<i>0.00%</i>
41	<i>Florida State University</i>	<i>396,525</i>	<i>396,525</i>	<i>396,525</i>	<i>-</i>	<i>0.00%</i>	<i>396,525</i>	<i>396,525</i>	<i>396,525</i>	<i>-</i>	<i>0.00%</i>
42	<i>University of South Florida</i>	<i>396,525</i>	<i>396,525</i>	<i>396,525</i>	<i>-</i>	<i>0.00%</i>	<i>396,525</i>	<i>396,525</i>	<i>396,525</i>	<i>-</i>	<i>0.00%</i>
43	<i>University of Florida Health Science Center at Jacksonville</i>	<i>396,526</i>	<i>396,526</i>	<i>396,526</i>	<i>-</i>	<i>0.00%</i>	<i>396,526</i>	<i>396,526</i>	<i>396,526</i>	<i>-</i>	<i>0.00%</i>
44	Florida Diagnostic and Learning Resources Centers	1,982,626	1,982,626	1,982,626	-	0.00%	1,982,626	1,982,626	1,982,626	-	0.00%



2012-2013 Senate PreK-12 Appropriations Base Budget Overview - For Discussion Only		All Funds					General Revenue, Educational Enhancement TF & State School TF				
		2011-2012	Base	2012-2013	Prior Year	% Change	2011-2012	Base	2012-2013	Prior Year	% Change
		Total	Total	Total	Difference	from Prior	GR, EETF, SSTF	GR, EETF, SSTF	Total	Difference	from Prior
45	New World School of the Arts	400,000	400,000	400,000	-	0.00%	400,000	400,000	400,000	-	0.00%
46	School District Matching Grants Program	1,393,891	1,393,891	1,393,891	-	0.00%	1,393,891	1,393,891	1,393,891	-	0.00%
47	Teacher and School Administrator Death Benefits	18,000	18,000	18,000	-	0.00%	18,000	18,000	18,000	-	0.00%
48	Risk Management Insurance	626,488	626,488	626,488	-	0.00%	578,868	578,868	578,868	-	0.00%
49	USF/FL Mental Health Institute	872,630	872,630	872,630	-	0.00%	872,630	872,630	872,630	-	0.00%
50	UF College of Medicine	605,129	605,129	605,129	-	0.00%	605,129	605,129	605,129	-	0.00%
51	UCF	747,284	747,284	747,284	-	0.00%	747,284	747,284	747,284	-	0.00%
52	UM Pediatrics incl. \$ for Broward thru Nova	945,826	945,826	945,826	-	0.00%	945,826	945,826	945,826	-	0.00%
53	FAU	473,254	473,254	473,254	-	0.00%	473,254	473,254	473,254	-	0.00%
54	UF Jacksonville	630,609	630,609	630,609	-	0.00%	630,609	630,609	630,609	-	0.00%
55	FSU Communications	700,693	700,693	700,693	-	0.00%	700,693	700,693	700,693	-	0.00%
56	Autism Program	4,975,425	4,975,425	4,975,425	-	0.00%	4,975,425	4,975,425	4,975,425	-	0.00%
57	Regional Education Consortium Services	1,445,390	1,445,390	1,445,390	-	0.00%	1,445,390	1,445,390	1,445,390	-	0.00%
58	Superintendent Training	167,713	167,713	167,713	-	0.00%	167,713	167,713	167,713	-	0.00%
59	Principal of the Year	29,426	29,426	29,426	-	0.00%	29,426	29,426	29,426	-	0.00%
60	Teacher of the Year	18,730	18,730	18,730	-	0.00%	18,730	18,730	18,730	-	0.00%
61	School Related Personnel of the Year	6,182	6,182	6,182	-	0.00%	6,182	6,182	6,182	-	0.00%
62	Federal Funds	134,580,906	134,580,906	134,580,906	-	0.00%	-	-	-	-	-
63	Teacher Professional Development	134,802,957	134,802,957	134,802,957	-	0.00%	222,051	222,051	222,051	-	0.00%
64	State Science Fair	42,032	42,032	42,032	-	0.00%	42,032	42,032	42,032	-	0.00%
65	Academic Tourney	55,476	55,476	55,476	-	0.00%	55,476	55,476	55,476	-	0.00%
66	Arts for a Complete Education	110,952	110,952	110,952	-	0.00%	110,952	110,952	110,952	-	0.00%
67	Project to Advance School Success	508,983	508,983	508,983	-	0.00%	508,983	508,983	508,983	-	0.00%
68	Learning for Life	869,813	869,813	869,813	-	0.00%	869,813	869,813	869,813	-	0.00%
69	Girl Scouts	267,635	267,635	267,635	-	0.00%	267,635	267,635	267,635	-	0.00%
70	Black Male Explorers	114,701	114,701	114,701	-	0.00%	114,701	114,701	114,701	-	0.00%
71	School and Instructional Enhancements	1,969,592	1,969,592	1,969,592	-	0.00%	1,969,592	1,969,592	1,969,592	-	0.00%
72	Exceptional Education	3,347,080	3,347,080	3,347,080	-	0.00%	1,013,726	1,013,726	1,013,726	-	0.00%
73	Florida School for the Deaf and the Blind	44,094,809	44,094,809	44,094,809	-	0.00%	39,755,955	39,755,955	39,755,955	-	0.00%
74	Transfer to DMS - HRS Purchased per Statewide Contract	252,926	252,926	252,926	-	0.00%	214,472	214,472	214,472	-	0.00%
75	K-12 Program - Non-FEFP	210,524,331	210,124,331	210,124,331	(400,000)	-0.19%	69,185,143	68,785,143	68,785,143	(400,000)	-0.58%
K-12 - Federal Grants											
76	Projects, Contracts and Grants	3,999,420	3,999,420	3,999,420	-	0.00%	-	-	-	-	-
77	Federal Grants and Aids	1,512,712,755	1,512,712,755	1,512,712,755	-	0.00%	-	-	-	-	-
78	African American Task Force	100,000	100,000	100,000	-	0.00%	-	-	-	-	-
79	Florida Holocaust Museum	100,000	100,000	100,000	-	0.00%	-	-	-	-	-
80	Total Federal Grants and Aids	1,512,912,755	1,512,912,755	1,512,912,755	-	0.00%	-	-	-	-	-
81	School Lunch Program	942,307,194	-	-	(942,307,194)	-100.00%	-	-	-	-	-
82	School Lunch Program - State Match	16,886,046	-	-	(16,886,046)	-100.00%	16,886,046	-	-	(16,886,046)	-100.00%
83	Domestic Security	5,409,971	5,409,971	5,409,971	-	0.00%	-	-	-	-	-
84	Strategic Education Initiatives	196,922,877	196,922,877	196,922,877	-	0.00%	-	-	-	-	-
85	Partnership for Assessment of Readiness for College and Careers	28,333,892	28,333,892	28,333,892	-	0.00%	-	-	-	-	-
86	K-12 Program - Federal Grants	2,706,772,155	1,747,578,915	1,747,578,915	(959,193,240)	-35.44%	16,886,046	-	-	(16,886,046)	-100.00%
Educational Media & Technology Services											
87	Capitol Technical Center	149,624	149,624	149,624	-	0.00%	149,624	149,624	149,624	-	0.00%

2012-2013 Senate PreK-12 Appropriations Base Budget Overview - For Discussion Only		All Funds					General Revenue, Educational Enhancement TF & State School TF				
		2011-2012	Base	2012-2013	Prior Year	% Change	2011-2012	Base	2012-2013	Prior Year	% Change
		Total	Total	Total	Difference	from Prior	GR, EETF, SSTF	GR, EETF, SSTF	Total	Difference	from Prior
88	NEFEC Web-Based Instruction for Credit Recovery	400,000	400,000	400,000	-	0.00%	400,000	400,000	400,000	-	0.00%
89	Instructional Technology	400,000	400,000	400,000	-	0.00%	400,000	400,000	400,000	-	0.00%
90	Statewide Governmental and Cultural Affairs Programming	497,522	497,522	497,522	-	0.00%	497,522	497,522	497,522	-	0.00%
91	Florida Channel Closed Captioning	340,862	340,862	340,862	-	0.00%	340,862	340,862	340,862	-	0.00%
92	Florida Channel Year Round Coverage	1,806,676	1,306,676	1,306,676	(500,000)	-27.68%	1,806,676	1,306,676	1,306,676	(500,000)	-27.68%
93	Public Broadcasting	2,645,060	2,145,060	2,145,060	(500,000)	-18.90%	2,645,060	2,145,060	2,145,060	(500,000)	-18.90%
94	Educational Media & Technology Services	3,194,684	2,694,684	2,694,684	(500,000)	-15.65%	3,194,684	2,694,684	2,694,684	(500,000)	-15.65%
State Board of Education											
95	Salaries and Benefits (1029 FTE)	66,125,515	63,545,003	63,545,003	(2,580,512)	-3.90%	18,957,506	18,957,506	18,957,506	-	0.00%
96	Other Personal Services (Temporary Employees)	2,242,305	2,115,285	2,115,285	(127,020)	-5.66%	227,539	227,539	227,539	-	0.00%
97	Expenses	17,511,161	16,468,864	16,468,864	(1,042,297)	-5.95%	2,691,998	2,691,998	2,691,998	-	0.00%
98	Operating Capital Outlay	1,715,272	1,657,834	1,657,834	(57,438)	-3.35%	45,970	45,970	45,970	-	0.00%
99	Assessment and Evaluation	86,611,665	75,765,624	75,765,624	(10,846,041)	-12.52%	31,422,090	31,422,090	31,422,090	-	0.00%
100	Transfer to Division of Administrative Hearings	260,822	260,822	260,822	-	0.00%	260,822	260,822	260,822	-	0.00%
101	Contracted Services	19,736,111	17,699,572	17,699,572	(2,036,539)	-10.32%	633,162	633,162	633,162	-	0.00%
102	Choices Product Sales	200,000	200,000	200,000	-	0.00%	-	-	-	-	-
103	Educational Facilities Research And Development Projects	200,000	200,000	200,000	-	0.00%	-	-	-	-	-
104	Student Financial Assistance Management Information System	460,220	460,220	460,220	-	0.00%	-	-	-	-	-
105	Risk Management Insurance	599,792	575,888	575,888	(23,904)	-3.99%	153,038	153,038	153,038	-	0.00%
106	Transfer to DMS - HRS Purchased per Statewide Contract	415,644	397,916	397,916	(17,728)	-4.27%	148,993	148,993	148,993	-	0.00%
107	Education Technology And Information Services	8,811,214	8,545,586	8,545,586	(265,628)	-3.01%	3,151,708	3,151,708	3,151,708	-	0.00%
108	Southwood Shared Resource Center	17,080	17,080	17,080	-	0.00%	-	-	-	-	-
109	Northwest Regional Data Center (NWRDC)	1,152,331	1,152,331	1,152,331	-	0.00%	165,444	165,444	165,444	-	0.00%
110	State Board of Education	206,059,132	189,062,025	189,062,025	(16,997,107)	-8.25%	57,858,270	57,858,270	57,858,270	-	0.00%
111	Total	12,864,567,434	11,638,131,129	11,638,131,129	(1,226,436,305)	-9.53%	9,382,930,465	9,141,144,419	9,141,144,419	(241,786,046)	-2.58%
* Early Learning Services funds adjusted to show the full year funding for FY 2011-2012 for comparison purposes.											



## **SCPS RANKS IN THE TOP TIER IN STUDENT PERFORMANCE AND BUSINESS EFFICIENCY BY STATE, NATIONAL, AND BUSINESS METRICS**

- SCPS is an “Academically HIGH Performing” A rated School District.
- SCPS received the Metro Orlando EDC Industry Innovation Award for initiating programs designed to prepare graduates for careers in industries targeted by the EDC.
- SCPS SAT scores are 40 points above the national average and 93 points above the state average.
- SCPS was recently named to the College Board’s Advanced Placement Honor Roll for the second year in a row, one of only three districts nationwide to receive this honor.
- SCPS is ranked #1 in the State in the percentage of its budget spent in the classroom. (source: Florida D.O.E. program cost report).
- SCPS was ranked #1 in the State in a “Return on Educational Investment” (ROEI) in a national study conducted by the Center for Education Progress.
- District administration for SCPS is .57% of all full time staff. The State average district administration to full time staff is .91% (source: Florida D.O.E. student/staff report).
- 96% of the SCPS budget is spent at the school level (source: Florida D.O.E. program cost report).
- Since 2006-2007, the student membership has dropped by 2.7%. Over this same period of time, the full time staff was reduced by 5.3%. (source: Florida D.O.E. student/staff report).
- SCPS is ranked 60th lowest of the 67 Florida school districts in total education funding (source: Florida D.O.E funding report).
- Financial Ratings of AA by Standard & Poor’s and Fitch & Aa-2 by Moody’s.
- SCPS currently has the 61st lowest percentage of vacant student capacity of all 67 Florida school districts.

**Seminole County Public Schools  
Summary of School Grades (2007-2011)**

Elementary Schools	2007	2008	2009	2010	2011
Altamonte	A	A	A	A	A
Bear Lake	A	A	A	A	A
Bentley	B	A	A	B	A
Carillon	A	A	A	A	A
Casselberry	A	A	A	B	C
Crystal Lake	A	A	A	A	A
Eastbrook	A	A	A	A	A
English Estates	B	A	B	B	C
Evans	A	A	A	A	A
Forest City	A	A	A	B	A
Geneva	A	A	A	A	A
Goldsboro	A	A	A	A	A
Hamilton	C	C	B	C	C
Heathrow	A	A	A	A	A
Highlands	A	A	A	A	A
Idyllwilde	A	A	A	B	A
Keeth	A	A	A	A	A
Lake Mary	A	B	A	B	A
Lake Orienta	B	B	A	A	A
Lawton	A	A	A	A	A
Layer	A	A	A	B	B
Longwood	A	A	A	A	A
Midway	B	C	C	B	C
Partin	A	A	A	A	A
Pine Crest	B	C	A	B	B
Rainbow	A	A	A	A	A
Red Bug	A	B	A	A	A
Sabal Point	A	A	A	A	A
Spring Lake	A	B	A	A	A
Stenstrom	A	A	A	A	A
Sterling Park	A	A	A	A	A
Walker	A	A	A	A	A
Wekiva	A	A	A	A	A
Wicklow	A	A	A	A	B
Wilson	A	A	A	A	A
Winter Springs	B	C	A	A	A
Woodlands	A	A	A	A	A

Middle Schools	2007	2008	2009	2010	2011
Chiles	A	A	A	A	A
Greenwood Lakes	A	A	A	A	A
Indian Trails	A	A	A	A	A
Jackson Heights	A	A	A	A	A
Markham Woods	A	A	A	A	A
Millennium	B	A	A	A	A
Milwee	A	A	A	A	B
Rock Lake	A	A	A	A	A
Sanford	A	A	A	A	A
South Seminole	A	A	A	A	A
Teague	A	A	A	A	A
Tuskawilla	A	A	A	A	A

High Schools	2007	2008	2009	2010	2011
Crooms	A	A	A	B	P*
Hagerty	B	A	B	B	P
Lake Brantley	B	A	B	A	P
Lake Howell	B	A	B	A	P
Lake Mary	B	B	B	A	P
Lyman	B	B	B	B	P
Oviedo	A	A	B	A	P
Seminole	C	A	C	B	P
Winter Springs	B	B	C	A	P

Seminole County	2007	2008	2009	2010	2011
District Grade	A	A	A	A	A

Charter/Alternative Schools	2007	2008	2009	2010	2011
Choices in Learning	B	A	A	A	A
Journeys Academy	NA	NA	NA	NA	NA

\*P=Grade Pending: awaiting the rest of the high school grading criteria

**Summary Data**

Elementary Schools										
	Number					Percent				
	2007	2008	2009	2010	2011	2007	2008	2009	2010	2011
A	30	29	34	27	30	81	78	92	73	81
B	6	4	2	9	3	16	11	5	24	8
C	1	4	1	1	4	3	11	3	3	11
D	0	0	0	0	0	0	0	0	0	0
F	0	0	0	0	0	0	0	0	0	0

Middle Schools										
	Number					Percent				
	2007	2008	2009	2010	2011	2007	2008	2009	2010	2011
A	11	12	12	12	11	92	100	100	100	92
B	1	0	0	0	1	8	0	0	0	8
C	0	0	0	0	0	0	0	0	0	0
D	0	0	0	0	0	0	0	0	0	0
F	0	0	0	0	0	0	0	0	0	0

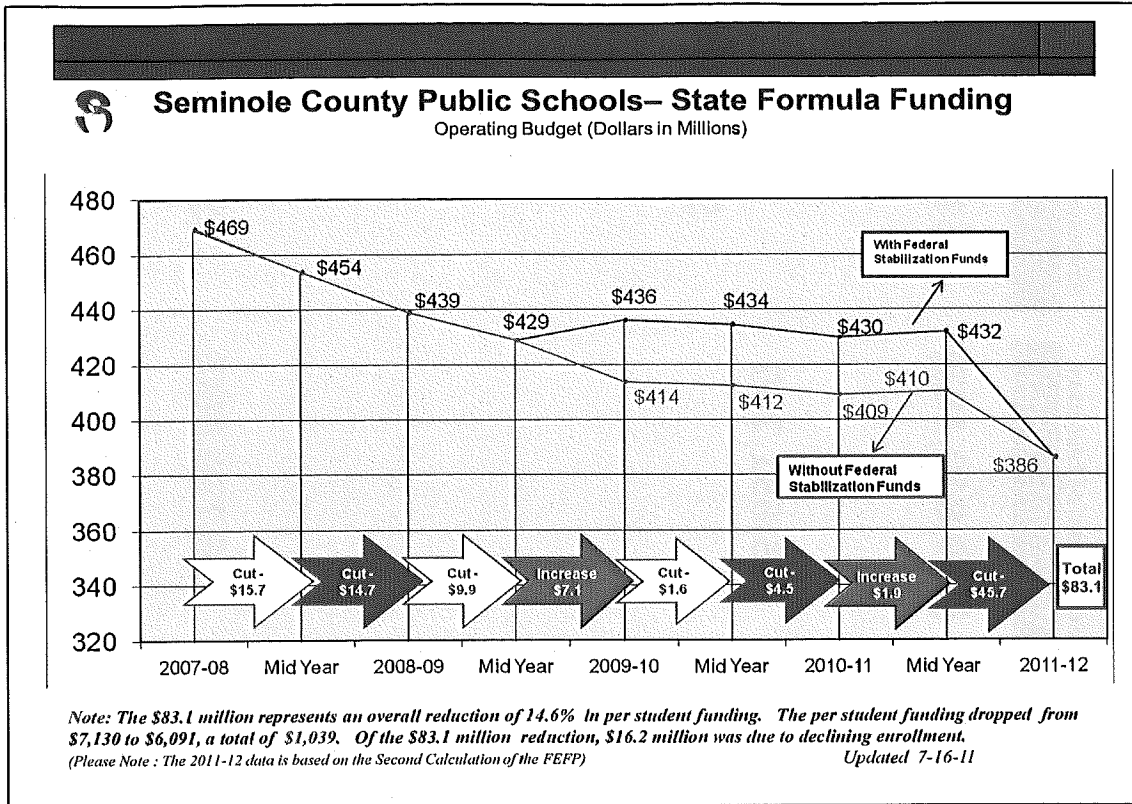
High Schools										
	Number					Percent				
	2007	2008	2009	2010	2011	2007	2008	2009	2010	2011
A	2	6	1	5		22	67	11	56	
B	6	3	6	4		67	33	67	44	
C	1	0	2	0		11	0	22	0	
D	0	0	0	0		0	0	0	0	
F	0	0	0	0		0	0	0	0	

Seminole County										
	Number					Percent				
	2007	2008	2009	2010	2011	2007	2008	2009	2010	2011
A	43	47	47	44		74	81	81	76	
B	13	7	8	13		22	12	14	22	
C	2	4	3	1		4	7	5	2	
D	0	0	0	0		0	0	0	0	
F	0	0	0	0		0	0	0	0	

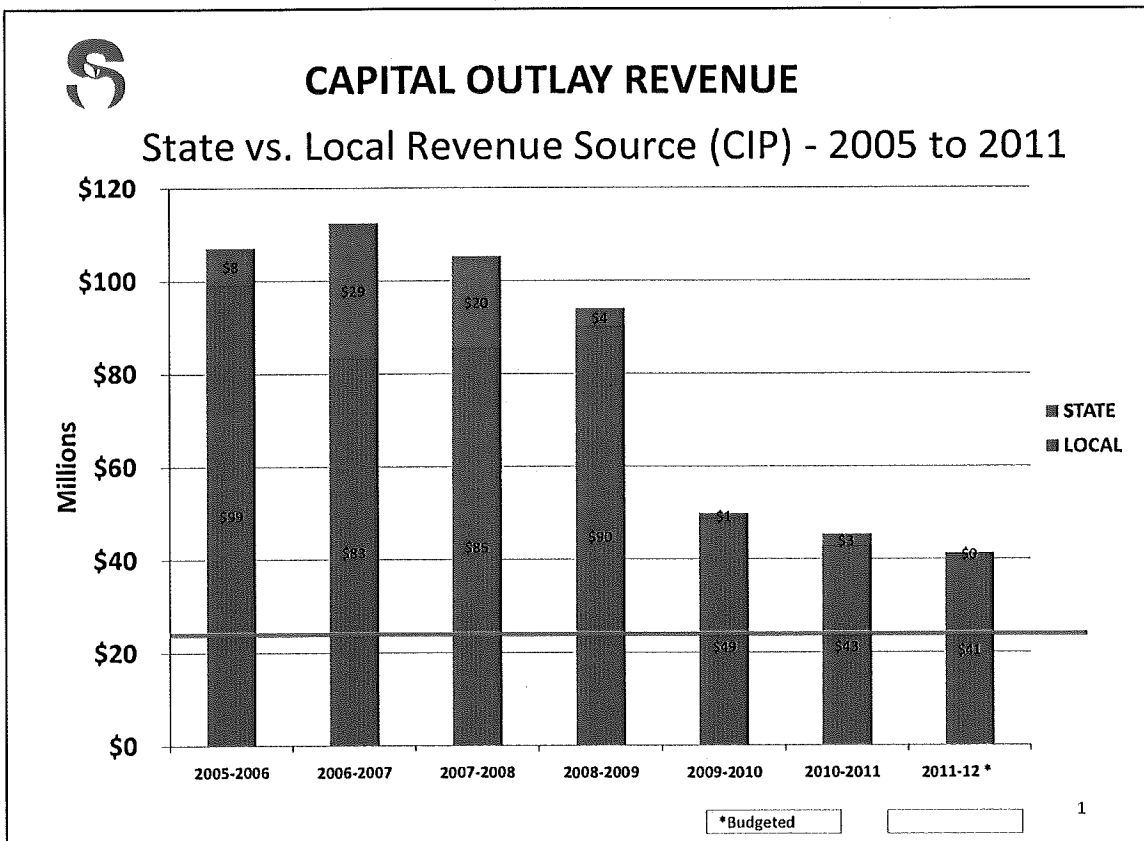
Charter/Alternative school data are not included in district summary

\*\* Percents may not equal 100 because of rounding.

## Seminole's Budget Challenges



- Since 2007-08 SCPS has lost \$83.1 million in funding or \$1,039 in per pupil funding.
- As a result, SCPS has reduced its workforce by 700 positions. (8.5% Reduction).
- District office staff was reduced by 19.9%.
- SCPS was ranked 60th lowest of the 67 Florida school districts in education funding.
- SCPS was ranked #1 in the State in the percent of it's budget spent in the classroom.



- Since 2006-07 SCPS has lost \$71.5 million in capital outlay funding. ( A 64% Reduction)



## SCPS OPERATING BUDGET

	2011-2012	State Board of Education 2012-2013 (Est.)	Governor's Budget Proposal 2012-2013 (Est.)
➤ Net Recurring Deficit	(\$19,840,183)	(\$19,840,183)	(\$19,840,183)
➤ Proposed Funding Increases 2012-13			
➤ State Board Of Education Budget		\$5,651,265	
➤ Governor's Proposed Budget			\$7,127,949
4 ➤ One-time Budget Savings			
➤ Instructional Material	\$2,500,000		
➤ Education Job Fund	\$13,328,674		
➤ Early Retirement Reinsurance Program	\$500,344		
➤ Use of Fund Balance	\$3,511,165		
➤ Retirement Increase, 2.44% (SB 2100)		(\$6,730,000)	(\$6,730,000)
➤ Net Estimated Deficit	\$0	(\$20,918,918)	(\$19,442,234)

## Seminole County Public Schools Funding Crisis

The State operating revenues were reduced by over \$83.1 million (17.7%)\* over the last four years. Among the actions taken over the last four years in order to balance the budget are the following:

- Eliminated 700 positions.....(\$29.7 M)\*\*
- Change from six period to seven period day at high schools (\$8.0 M)
- Employee medical and prescription design changes.....(\$7.4 M)
- Computer bid.....(\$5.5 M)
- Reduction in leased portables.....(\$5.5 M)
- Electric and water conservation.....(\$1.8 M)
- Alternative school, in-source.....(\$5.5 M)
- Grounds maintenance, out-source.....(\$6.5 M)
- Custodial services bid.....(\$3.5 M)
- Suspend operations of an elementary school.....(\$1.0 M)
- Closed an alternative school.....(\$1.1 M)
- Summer school reductions.....(\$1.5 M)
- School supplies reduction.....(\$2.5 M)
- Consolidated magnet bus stops.....(\$2.5 M)

\*SCPS is ranked 60th lowest of the 67 Florida school districts in education funding. SCPS is ranked 1st (highest) in the State in the percentage of its budget spent in the classroom.

\*\*73% of SCPS employees reside in Seminole County. The percentages of staffing reductions made over the last four years are as follows:

- Overall position reductions, 8.5%
- School based teacher reductions, 5.4%
- District level administrators, 8.5%
- District office staff, 19.9%

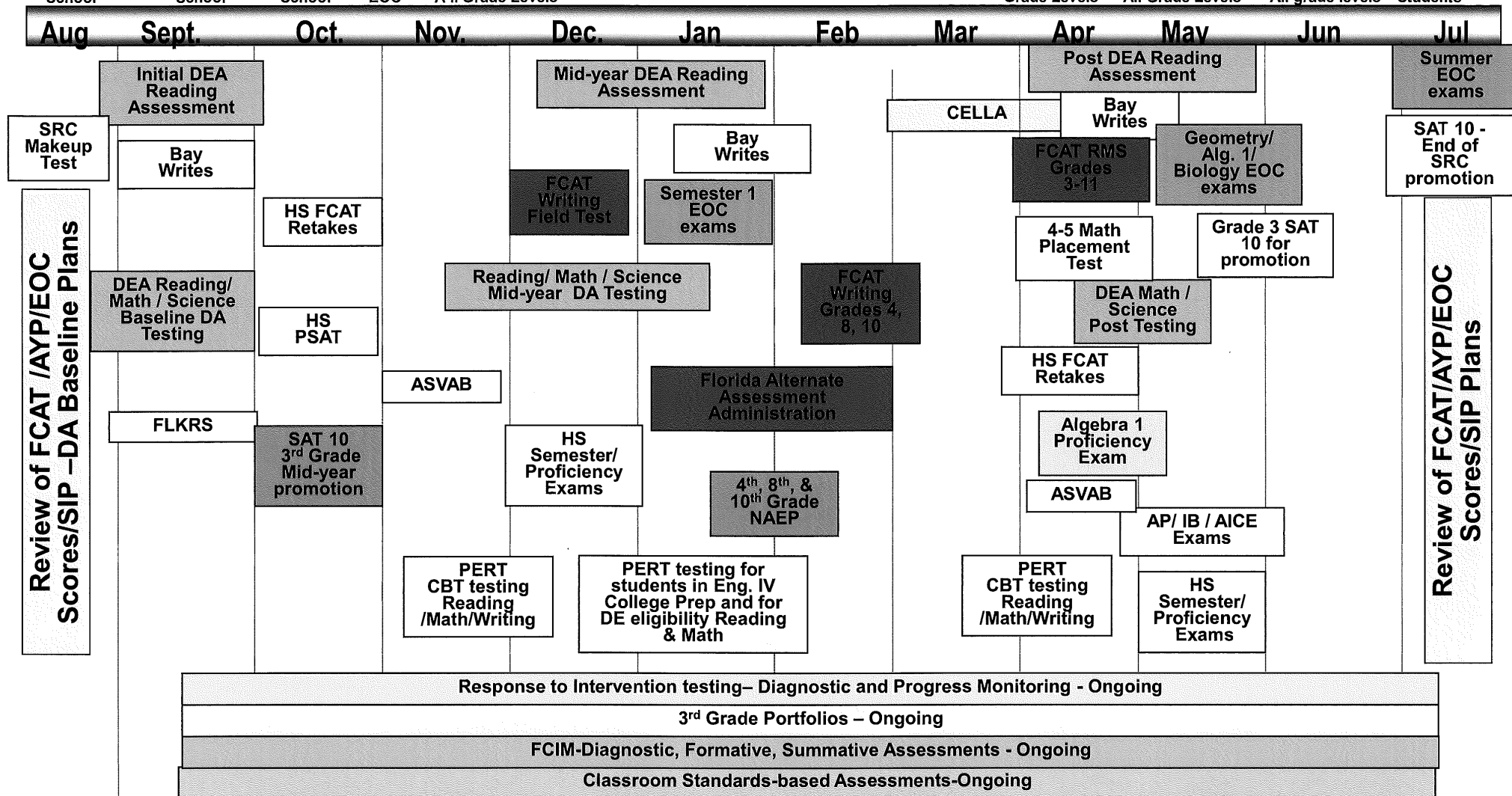
## Seminole County Public Schools - Millage Rate History

Fiscal Year	By State Law	Local Board	Debt Service	Total Millage Rate
<b>2002-03</b>	<b>5.786</b>	<b>2.693</b>	<b>0.521</b>	<b>9.000</b>
2003-04	5.564	2.677	0.495	8.736
2004-05	5.456	2.671	0.385	8.512
2005-06	5.205	2.760		7.965
2006-07	5.001	2.752		7.753
2007-08	4.698	2.715		7.413
2008-09	5.097	2.446		7.543
2009-10	5.277	2.446		7.723
2010-11	<b>5.355</b>	<b>2.446</b>		<b>7.801</b>
<b>2011-12</b>	<b>5.474</b>	<b>2.248</b>		<b>7.722</b>
<b>Millage Decrease Since 2002-03:</b>	<b>-0.312</b>	<b>-0.445</b>	<b>-0.521</b>	<b>-1.278</b>
<b>% Decrease Since 2002-03</b>	<b>-5.4%</b>	<b>-16.5%</b>	<b>-100.0%</b>	<b>-14.2%</b>



Elementary School	Middle School	High School	MS/HS EOC	DEA	Multiple Grade Levels	FCAT	Ongoing	ELL

# Assessment Timeline



Review of FCAT/AYP/EOC Scores/SIP Plans

①

THE FLORIDA SENATE  
**APPEARANCE RECORD**

(Deliver BOTH copies of this form to the Senator or Senate Professional Staff conducting the meeting)

2-2-12

Meeting Date

Topic Superintendent's Report

Bill Number Several  
(if applicable)

Name Ronald Blocker

Amendment Barcode \_\_\_\_\_  
(if applicable)

Job Title Superintendent - Orange Co.

Address 445 W. Amelia St.

Phone 407-317-3209

Street

Orlando Fl. 32801

City

State

Zip

E-mail Ronald.Blocker@OKPS  
.Net

Speaking: ☐ For ☐ Against ☒ Information

Representing Fl. Assoc. District School Superintendents

Appearing at request of Chair: ☒ Yes ☐ No

Lobbyist registered with Legislature: ☐ Yes ☒ No

While it is a Senate tradition to encourage public testimony, time may not permit all persons wishing to speak to be heard at this meeting. Those who do speak may be asked to limit their remarks so that as many persons as possible can be heard.

**This form is part of the public record for this meeting.**

S-001 (10/20/11)

2

THE FLORIDA SENATE

APPEARANCE RECORD

(Deliver BOTH copies of this form to the Senator or Senate Professional Staff conducting the meeting)

Meeting Date \_\_\_\_\_

Topic Budget Bill Number \_\_\_\_\_ (if applicable)

Name BILL Vogel Amendment Barcode \_\_\_\_\_ (if applicable)

Job Title Superintendent of Seminole County Public Schools

Address 400 E Lake Mary Blvd Phone (321) 299-2452  
Street

Sawford FL 32714 E-mail bill\_vogel@scps.k12.fl.us  
City State Zip

Speaking: ☐ For ☐ Against ☐ Information

Representing \_\_\_\_\_

Appearing at request of Chair: ☐ Yes ☐ No

Lobbyist registered with Legislature: ☐ Yes ☐ No

While it is a Senate tradition to encourage public testimony, time may not permit all persons wishing to speak to be heard at this meeting. Those who do speak may be asked to limit their remarks so that as many persons as possible can be heard.

This form is part of the public record for this meeting.

S-001 (10/20/11)

THE FLORIDA SENATE

APPEARANCE RECORD

(Deliver BOTH copies of this form to the Senator or Senate Professional Staff conducting the meeting)

2/2/12  
Meeting Date

Topic Superintendent Conversation / Budget Bill Number \_\_\_\_\_  
(if applicable)

Name Michael J. Lannon Amendment Barcode \_\_\_\_\_  
(if applicable)

Job Title Superintendent of St. Lucie Co.

Address 4204 Oklawaha Road Phone 772-519-6129  
Street  
Fort Pierce, FL 34949  
City State Zip

E-mail Mike.Lannon@stlucie5chd.org

Speaking: ☐ For ☐ Against ☒ Information

Representing FADS

Appearing at request of Chair: ☐ Yes ☐ No

Lobbyist registered with Legislature: ☐ Yes ☒ No

While it is a Senate tradition to encourage public testimony, time may not permit all persons wishing to speak to be heard at this meeting. Those who do speak may be asked to limit their remarks so that as many persons as possible can be heard.

This form is part of the public record for this meeting.

S-001 (10/20/11)

4

THE FLORIDA SENATE

APPEARANCE RECORD

(Deliver BOTH copies of this form to the Senator or Senate Professional Staff conducting the meeting)

2/2/12  
Meeting Date

Topic Supts Report/Budget issues

Bill Number \_\_\_\_\_  
(if applicable)

Name DAVID MILLER

Amendment Barcode \_\_\_\_\_  
(if applicable)

Job Title SUPERINTENDENT

Address 227 Buck Miller Rd.

Phone 850-926-0065

Crawfordville FL 32327  
City State Zip

E-mail DAVID.MILLER@WFSB.US

Speaking: ☐ For ☐ Against ☒ Information

Representing \_\_\_\_\_

Appearing at request of Chair: ☒ Yes ☐ No

Lobbyist registered with Legislature: ☐ Yes ☒ No

While it is a Senate tradition to encourage public testimony, time may not permit all persons wishing to speak to be heard at this meeting. Those who do speak may be asked to limit their remarks so that as many persons as possible can be heard.

This form is part of the public record for this meeting.

S-001 (10/20/11)

THE FLORIDA SENATE

APPEARANCE RECORD

3

(Deliver BOTH copies of this form to the Senator or Senate Professional Staff conducting the meeting)

2/2/12

Meeting Date

Topic

Superint. Report / BUDGET

Bill Number

Several

(if applicable)

Name

Bill Husfelt

Amendment Barcode

(if applicable)

Job Title

Superintendent of Schools Bay Co.

Address

1311 Balboa Ave.

Phone

850 767 4101

Street

Panama City

FL

32401

City

State

Zip

E-mail

husfelt@bay.fl.us

Speaking:

☐

For

☐

Against

☒

Information

Representing

School Superintendent

Appearing at request of Chair:

☒

Yes

☐

No

Lobbyist registered with Legislature:

☐

Yes

☒

No

While it is a Senate tradition to encourage public testimony, time may not permit all persons wishing to speak to be heard at this meeting. Those who do speak may be asked to limit their remarks so that as many persons as possible can be heard.

This form is part of the public record for this meeting.

S-001 (10/20/11)

THE FLORIDA SENATE

APPEARANCE RECORD

(Deliver BOTH copies of this form to the Senator or Senate Professional Staff conducting the meeting)

02/02/12  
Meeting Date

Topic Superintendents Report

Bill Number \_\_\_\_\_  
(if applicable)

Name Alexis Tibbetts

Amendment Barcode \_\_\_\_\_  
(if applicable)

Job Title Superintendent - Okaloosa County

Address 120 Lowery Place  
Street  
Ft. Walton Beach FL 32579  
City State Zip

Phone 850 833-3110

E-mail tibbettsa@cox.net

Speaking: ☐ For ☐ Against ☒ Information

Representing FLDSS Florida Association of District School Superintendents

Appearing at request of Chair: ☒ Yes ☐ No

Lobbyist registered with Legislature: ☐ Yes ☐ No

While it is a Senate tradition to encourage public testimony, time may not permit all persons wishing to speak to be heard at this meeting. Those who do speak may be asked to limit their remarks so that as many persons as possible can be heard.

This form is part of the public record for this meeting.

S-001 (10/20/11)

7

THE FLORIDA SENATE  
**APPEARANCE RECORD**

(Deliver BOTH copies of this form to the Senator or Senate Professional Staff conducting the meeting)

2-2-12  
Meeting Date

Topic \_\_\_\_\_

Bill Number \_\_\_\_\_  
(if applicable)

Name HEATHER FIORENTINO

Amendment Barcode \_\_\_\_\_  
(if applicable)

Job Title SUPT.

Address 5534 WYOMING AVE

Phone \_\_\_\_\_

Street  
City NPR State FL Zip 34652

E-mail hfiorent@pasco.k12.fl

Speaking: ☐ For ☐ Against ☐ Information

Representing \_\_\_\_\_

Appearing at request of Chair: ☐ Yes ☐ No

Lobbyist registered with Legislature: ☐ Yes ☒ No

*While it is a Senate tradition to encourage public testimony, time may not permit all persons wishing to speak to be heard at this meeting. Those who do speak may be asked to limit their remarks so that as many persons as possible can be heard.*

**This form is part of the public record for this meeting.**

S-001 (10/20/11)



THE FLORIDA SENATE

APPEARANCE RECORD

(Deliver BOTH copies of this form to the Senator or Senate Professional Staff conducting the meeting)

2/2/12

Meeting Date

Topic Senate Ed. Bills

Bill Number \_\_\_\_\_  
(if applicable)

Name Ed Pratt-Dannals

Amendment Barcode \_\_\_\_\_  
(if applicable)

Job Title Supt.

Address 1701 Prudential Dr.  
Street

Phone (904) 390-2115

City

Jacksonville FL 32207  
City State Zip

E-mail prattdanne@duvalschools.org

Speaking: ☐ For ☐ Against ☒ Information

Representing Duval Co. Public Schools

Appearing at request of Chair: ☐ Yes ☐ No

Lobbyist registered with Legislature: ☐ Yes ☒ No

While it is a Senate tradition to encourage public testimony, time may not permit all persons wishing to speak to be heard at this meeting. Those who do speak may be asked to limit their remarks so that as many persons as possible can be heard.

This form is part of the public record for this meeting.

S-001 (10/20/11)

*did not speak*

**THE FLORIDA SENATE**  
**APPEARANCE RECORD**

(Deliver BOTH copies of this form to the Senator or Senate Professional Staff conducting the meeting)

2/2/12

Meeting Date

Topic

Budget Issues

Bill Number

(if applicable)

Name

Joy Frank

Amendment Barcode

(if applicable)

Job Title

General Counsel

Address

208 S Monroe St

Street

Tall. FL 32301

City

State

Zip

Phone

850-577-574

E-mail

JFRANK@FAPSS.org

Speaking:

☐

For

☐

Against

☒

Information

Representing

FAPSS

Appearing at request of Chair:

☒

Yes

☐

No

Lobbyist registered with Legislature:

☒

Yes

☐

No

*While it is a Senate tradition to encourage public testimony, time may not permit all persons wishing to speak to be heard at this meeting. Those who do speak may be asked to limit their remarks so that as many persons as possible can be heard.*

**This form is part of the public record for this meeting.**

S-001 (10/20/11)

# CourtSmart Tag Report

**Room:** KN 412

**Case:**

**Type:**

**Caption:** Senate Budget Subcommittee on Education Pre-K-12 Appropriations - 412 Knott Bldg. 8:00am

**Judge:**

**Started:** 2/2/2012 8:13:49 AM

**Ends:** 2/2/2012 9:45:56 AM **Length:** 01:32:08

8:13:54 AM	Call to order
8:14:18 AM	Roll call
8:14:22 AM	Chair comments on budget
8:26:26 AM	Senator Flores comments
8:27:28 AM	Chair
8:30:06 AM	Ronald Blocker, Superintendent - Orange County
8:35:42 AM	Bill Vogel, Superintendent of Seminole County
8:42:16 AM	Senator Detert
8:42:31 AM	Bill Vogel
8:44:18 AM	Michael J. Lannon, Superintendent of St. Lucie County
8:44:39 AM	Bill Vogel
8:46:11 AM	Senator Dockery
8:50:11 AM	David Miller, Superintendent, Wakulla County
8:52:09 AM	Bill Vogel
8:52:39 AM	David Miller
8:53:33 AM	Ronald Blocker
8:55:09 AM	Bill Husfelt, Superintendent Bay County Schools
9:00:42 AM	Ronald Blocker
9:02:00 AM	Senator Detert
9:02:14 AM	Bill Husfelt
9:03:05 AM	Senator Detert
9:04:00 AM	Bill Husfelt
9:04:31 AM	Ronald Blocker
9:05:12 AM	Alexis Tibbetts, Superintendent Okaloosa County
9:09:16 AM	Bill Vogel
9:10:49 AM	Senator Detert
9:12:00 AM	Michael Lannon
9:15:11 AM	Chair
9:16:29 AM	Senator Dockery
9:17:48 AM	Bill Husfelt
9:18:01 AM	Ronald Blocker
9:18:11 AM	Alexis Tibbetts
9:18:43 AM	Chair
9:19:02 AM	Senator Wise
9:21:39 AM	Chair
9:21:57 AM	Senator Wise
9:22:12 AM	Chair
9:22:40 AM	Senator Dockery
9:23:04 AM	Bill Vogel
9:23:31 AM	Senator Siplin
9:26:28 AM	Ronald Blocker
9:27:09 AM	Chair
9:27:33 AM	Ronald Blocker
9:28:38 AM	Senator Siplin
9:28:56 AM	Chair
9:30:14 AM	Senator Siplin
9:31:48 AM	Chair
9:32:16 AM	Ronald Blocker
9:33:07 AM	Alexis Tibbetts
9:36:19 AM	Chair
9:38:30 AM	Bill Husfelt
9:38:39 AM	Heather Fiorentino, Superintendent Pasco County Schools

9:40:07 AM	Chair
9:40:25 AM	Ed Pratt-Dannals, Superintendent Duval County
9:41:02 AM	Mike Lannon
9:41:47 AM	Chair
9:42:46 AM	Ed Pratt-Dannals
9:43:01 AM	Heather Fiorentino
9:43:43 AM	Mike Lannon
9:44:41 AM	Ed Pratt-Dannals
9:45:13 AM	Chair
9:45:24 AM	Senator Montford
9:45:39 AM	Meeting Adjourned



# THE FLORIDA SENATE

Tallahassee, Florida 32399-1100

**COMMITTEES:**  
Budget - Subcommittee on Higher Education  
Appropriations, *Chair*  
Budget  
Budget - Subcommittee on Education Pre-K - 12  
Appropriations  
Commerce and Tourism  
Communications, Energy, and Public Utilities  
Higher Education  
Reapportionment  
Rules

**JOINT COMMITTEE:**  
Legislative Auditing Committee

**SENATOR EVELYN J. LYNN**

7th District

February 1, 2012

Senator David Simmons  
Chair – Education Pre K-12 Appropriations  
320 Senate Office Building  
404 South Monroe Street  
Tallahassee, FL 32399-1100

Dear Senator Simmons:

Unfortunately due to a scheduling conflict, I will not be able to attend the Education Pre K-12 Appropriations meeting tomorrow, February 2, 2012. Thank you and please do not hesitate to contact me should you have any questions or concerns.

Sincerely,

Evelyn Lynn  
Florida State Senator  
District 7

cc: Kurt Hamon, Staff Director

SENATE APPROPRIATIONS  
RECEIVED  
12 JAN 32 PM 4:47  
SENT TO: CHAIRMAN  
STAFF DIR. STAFF

**REPLY TO:**

- ☐ 536 North Halifax Avenue, Suite 101, Daytona Beach, Florida 32118 (386) 238-3180
- ☐ 416 Senate Office Building, 404 South Monroe Street, Tallahassee, Florida 32399-1100 (850) 487-5033

Senate's Website: [www.flsenate.gov](http://www.flsenate.gov)

**MIKE HARIDOPOLOS**  
President of the Senate

**MICHAEL S. "MIKE" BENNETT**  
President Pro Tempore