

The Florida Senate
COMMITTEE MEETING EXPANDED AGENDA

ETHICS AND ELECTIONS

Senator Richter, Chair
Senator Legg, Vice Chair

MEETING DATE: Tuesday, January 20, 2015

TIME: 1:30 —3:00 p.m.

PLACE: *Pat Thomas Committee Room, 412 Knott Building*

MEMBERS: Senator Richter, Chair; Senator Legg, Vice Chair; Senators Braynon, Clemens, Flores, Gaetz, Hays, Negrón, Smith, and Thompson

TAB	BILL NO. and INTRODUCER	BILL DESCRIPTION and SENATE COMMITTEE ACTIONS	COMMITTEE ACTION
1	Introduction of Members and Staff		Presented
2	Committee Jurisdiction Overview		Presented
3	Other Introductions and Brief Discussion of Top Priorities		Presented
	Maria Matthews, Director, Division of Elections Florida Department of State		
	Ron Labasky, General Counsel Florida State Association of Supervisors of Elections		
	Amy McKeever Toman, Executive Director Florida Elections Commission		
	Virlindia Doss, Executive Director Florida Commission on Ethics		
	Other Related Meeting Documents		



Florida Department of State Division of Elections Overview



Ken Detzner, Secretary of State

Maria Matthews, Director

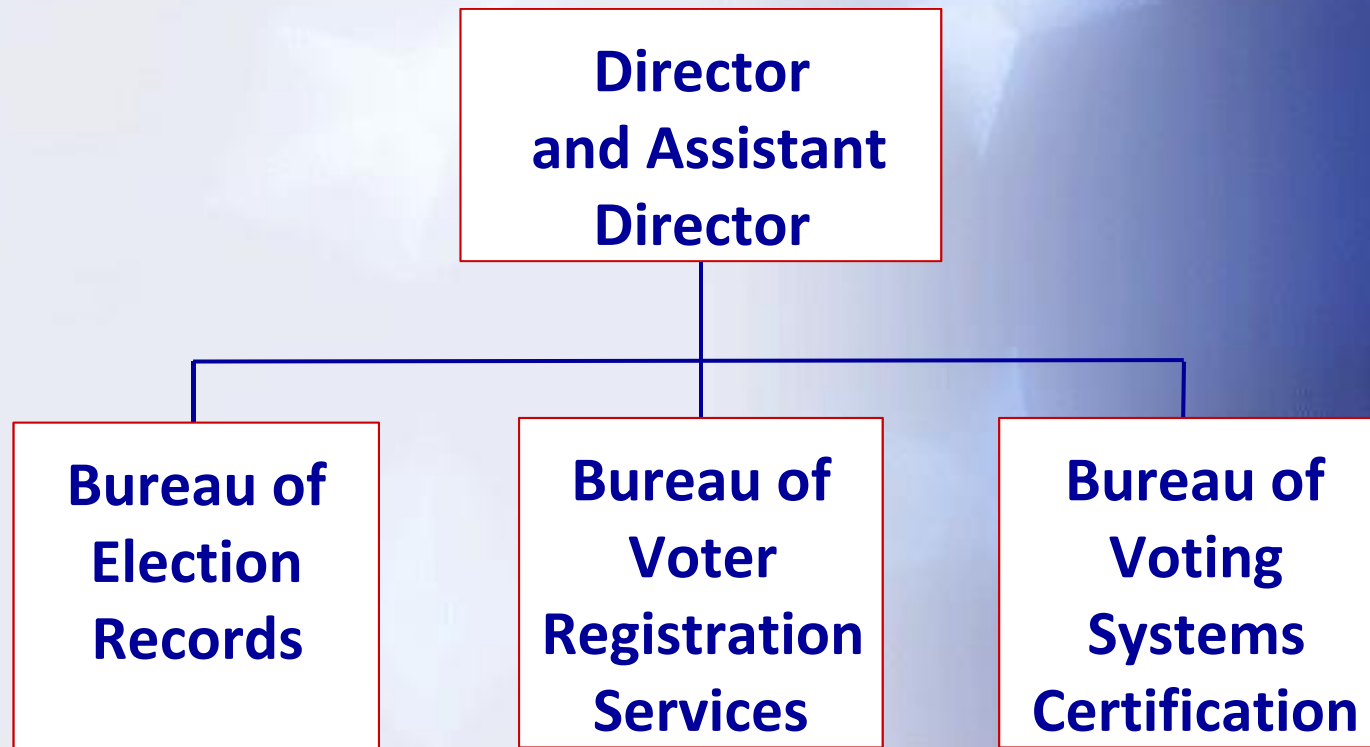
Gary Holland, Assistant Director January 2015

Florida Election Code

Primary chapters in statutes

- 97 (registration)
- 98 (registration office and procedures)
- 99 (candidates)
- 100 (general, primary and other elections)
- 101 (voting methods/procedures)
- 102 (conducting elections and results)
- 103 (presidential electors)
- 104 (violations; penalties)
- 105 (nonpartisan elections)
- 106 (campaign financing)

Division of Elections

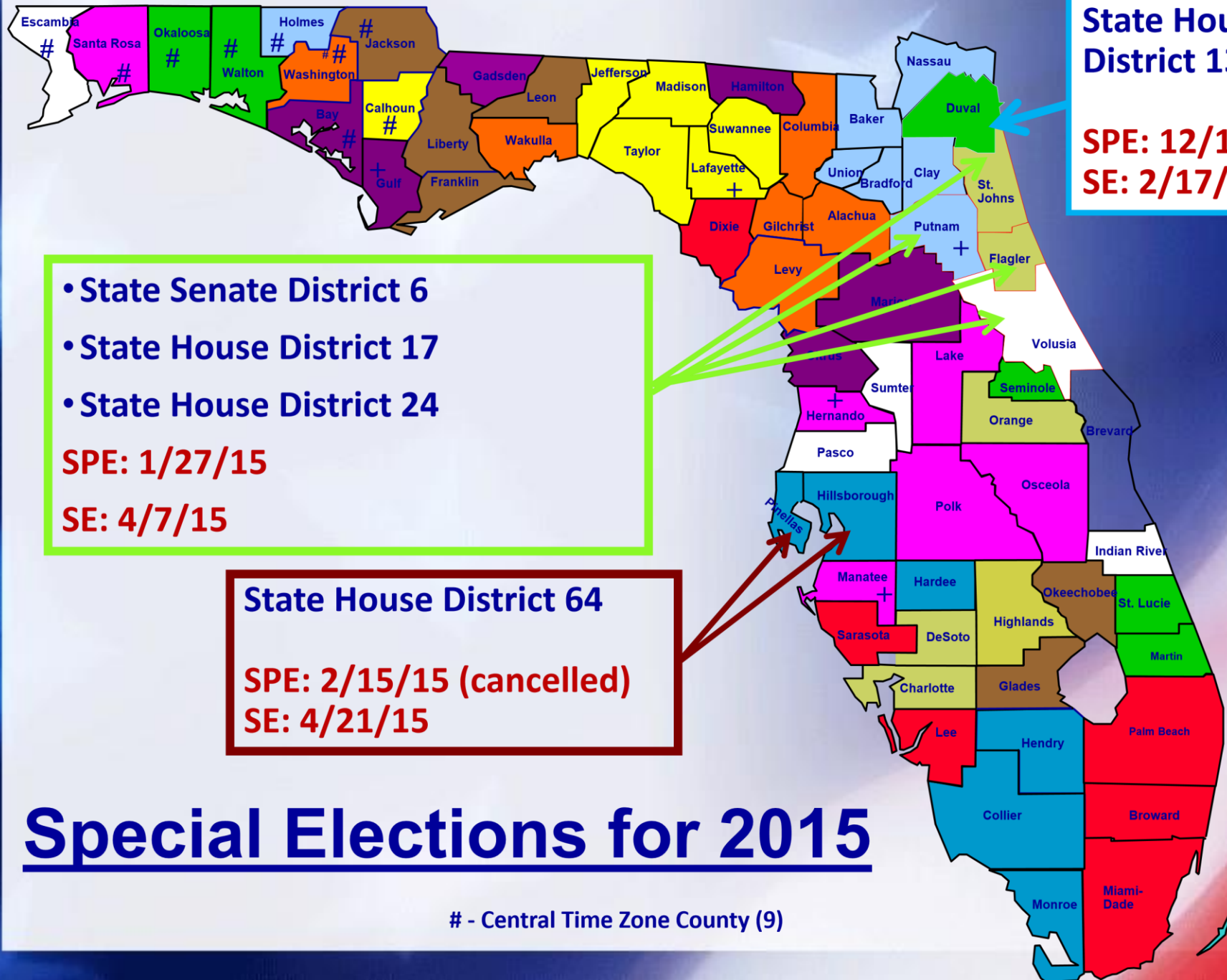


Division of Elections website:
<http://election.dos.state.fl.us/>

Office of the Director

Major Duties

- Special election reimbursement
- Citizens initiative amendment petition approval
- Help America Vote Act Unit
- National Voter Registration Act Coordinator



Special Elections for 2015

- Central Time Zone County (9)

Bureau of Voter Registration Services

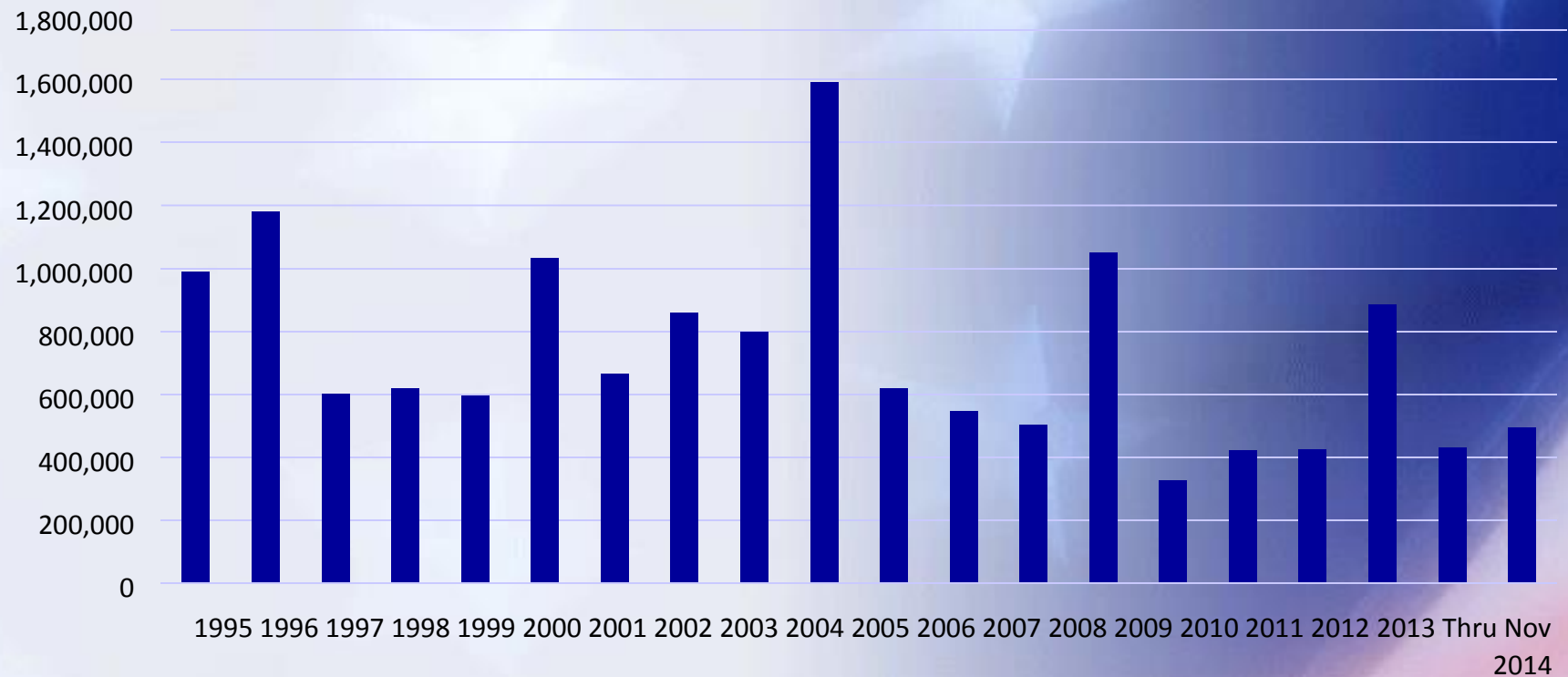
Major Duties

- Identify potentially ineligible registered voters
- Enter new and updated voter registration information
- Prepare state and federal summary election related reports, surveys and evaluations
- Respond to public inquires including hotline

Only county Supervisor of Elections have authority:

- *To accept or deny new registration*
- *To remove a registered voter for reasons of ineligibility*

Voter Registration History



■ New Registered Voters

Bureau of Election Records

Major Duties

- Candidate qualifying
- Certifying state and federal offices for ballot
- Campaign finance reporting
- Office commissions

2014 Election Cycle-Activities

(January 2013-December 2014)

Candidate Qualifying

- Candidates qualifying with State: **972**

Political Entities Registration (committees and close constantly)

- Actively registered PCs and ECOs: **1025**

Campaign Finance Reports

- Reports filed: **59,580**

Bureau of Voting System Certification

Major Duties

- Reviews- Conduct of elections; post-election voting system audits, and undervotes/overvotes
- Custodian of pre-and post-election voting system testing and precinctlevel election results
- Onsite observations- logic & accuracy testing, early voting, & Election Day
- Reviews-County Security Procedures- Pre-election and comprehensive bi-ennial
- Technical expertise/support to counties
- Reviews/Approvals-Ancillary Equipment (Software-Hardware)
- Test/Certification- Voting Systems

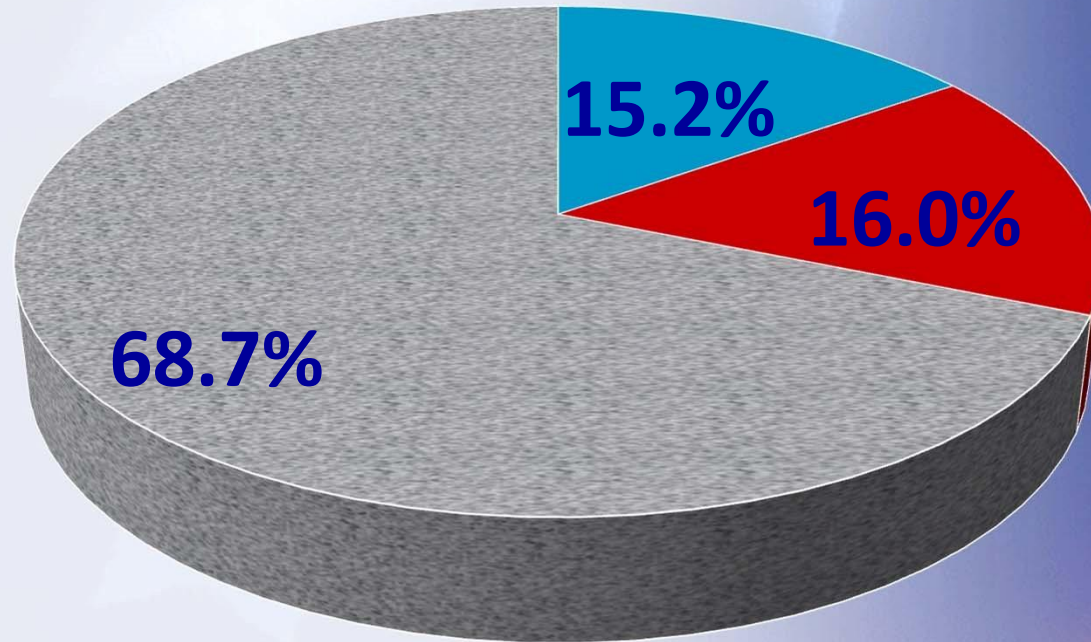
Post-Election Voting System Audit

- In 2013, the Florida Legislature provided county canvassing boards with the option of conducting an automated independent audit verification for postelection evaluation of voting systems in lieu of manual audits.
- This was the 1st election cycle automated independent audit verification process used:

Total	Total Audit Methods	
Recounts	Automated	Manual
8	5	53

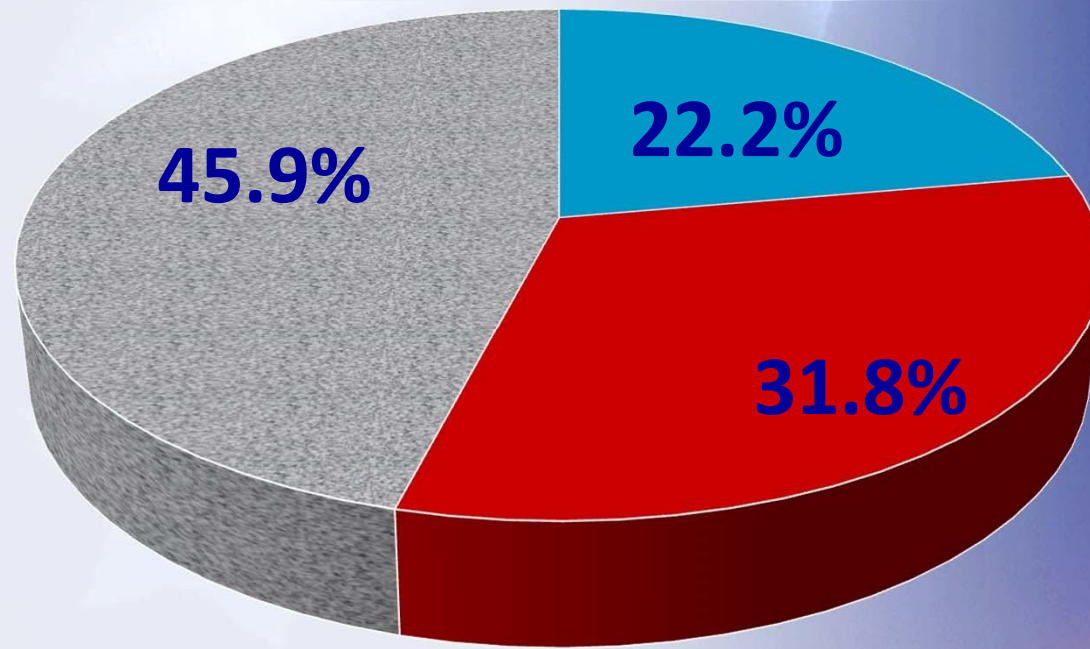
- Audit is not required if a recount is undertaken
- Conclusion: Voting systems in Florida are accurate

Voting Trends: 2006



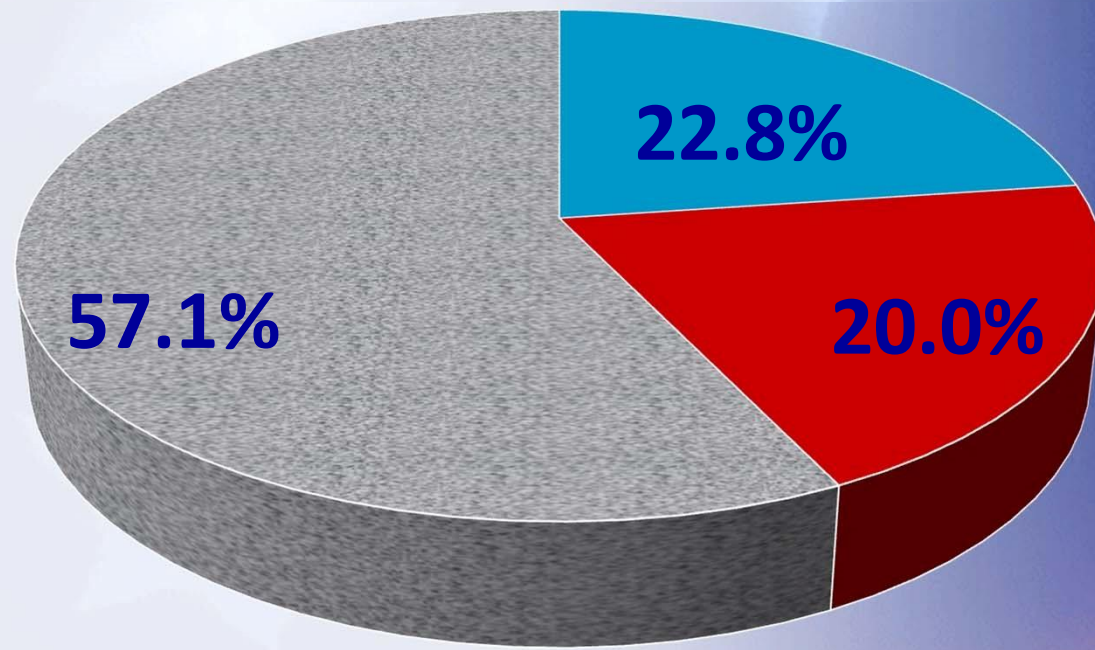
- Absentee Ballot (750,762)
- Early Voting (793,331)
- Election Day (3,385,239)

Voting Trends: 2008



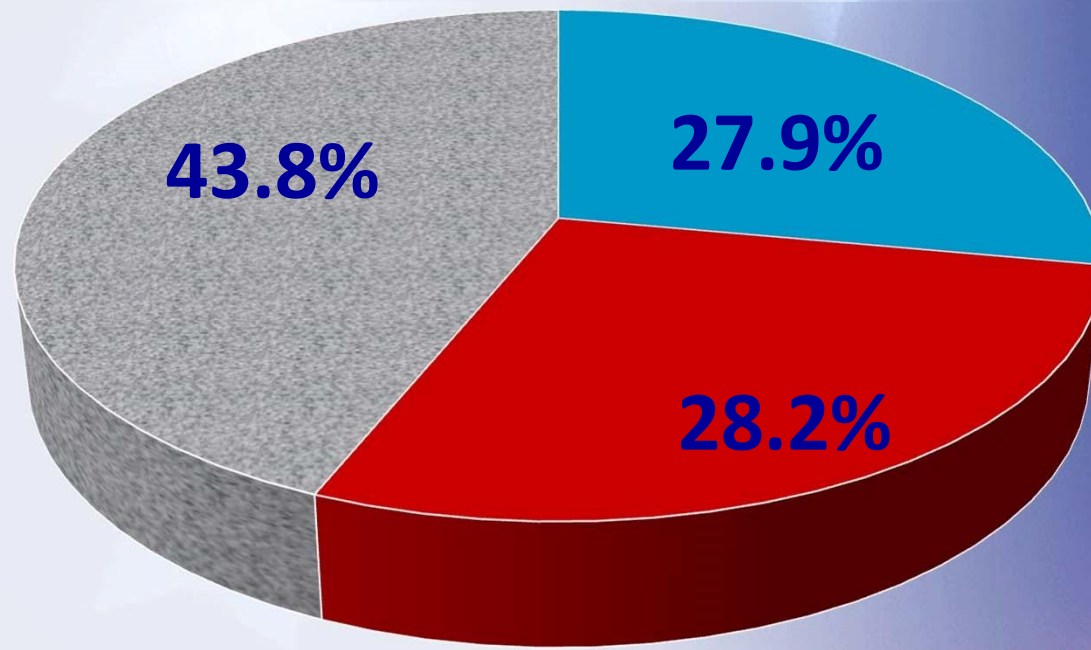
- Absentee Ballot (1,850,502)
- Early Voting (2,661,672)
- Election Day (3,839,184)

Voting Trends: 2010



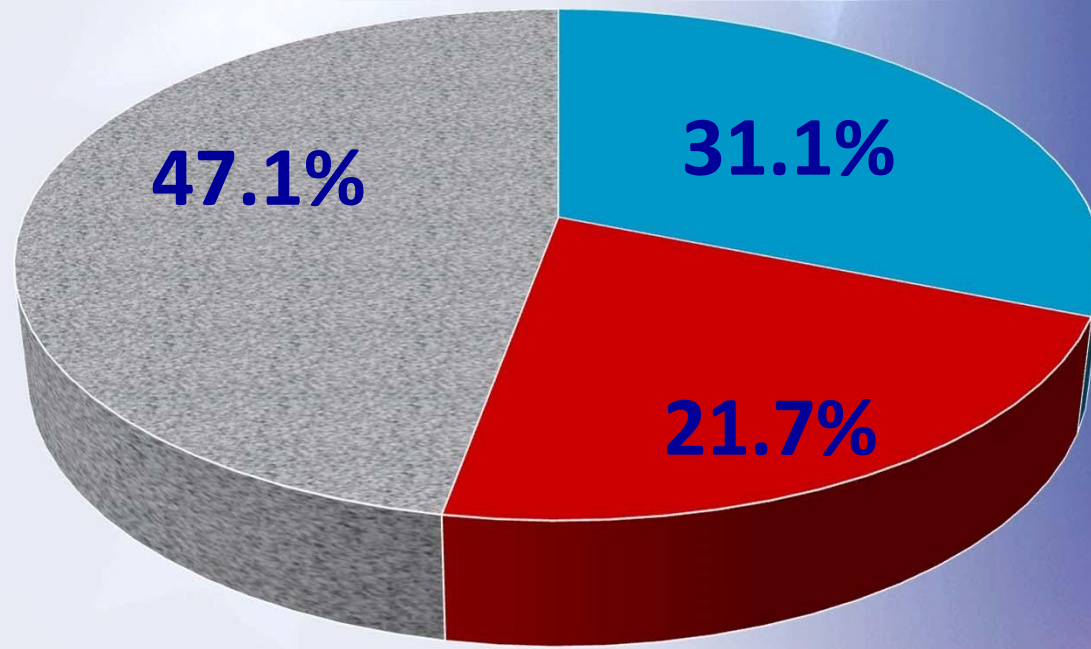
- Absentee Ballot (1,241,856)
- Early Voting (1,088,706)
- Election Day (3,102,388)

Voting Trends:2012



- Absentee Ballot (2,380,115)
- Early Voting (2,409,097)
- Election Day (3,736,946)

Voting Trends: 2014



- Absentee Ballot (1,877,847)
- Early Voting (1,309,411)
- Election Day (2,839,544)

2014 General Election

Early Voting Sites and Hours

- In 2013, the Florida Legislature enacted law that provided Supervisors of Elections greater flexibility for early voting
 - **“Wild Card” option:** 30 counties used their “Wild Card” option for an early voting site
 - **Extended days:** 46 counties extended the early voting period beyond the mandatory 8-day period (10 -3 days before Election Day)

2016

Para español,
seleccione de la lista abajo
(Atención: la traducción en
español puede tardar unos
segundos)

Select Language ▼

Powered by Google Translate
[Help / Ayuda](#)

Home
► About the Division
► For the Voters
► Candidates &
Committees
► Opinions/Rules/Laws/
Directives
Constitutional
Amendments/
Referendum
Forms &
Publications
Hearings, Public
Meetings &
Workshops
Government Links
Contact Us
Site Map

Voter Information
Lookup
Búsqueda del
información al votante

**Myths vs Facts
Voting**
Votación
Mitos vs Hechos

Register
to
VOTE
Inscribirse para Votar

Help America
Vote Act
Le Ayude a
América a Votar
HAVA

GET A PLAN!
FloridaDisaster.org
CONSEGUIR
UN PLAN!

VOTE

Calendar of Election Dates

2015-2016 Dates to Remember

2014 Campaign Finance Reporting Dates

2016 Election Day Dates

- ★ **Presidential Preference Primary Election: March 1, 2016**
- ★ **Primary Election: August 30, 2016**
- ★ **General Election: November 8, 2016**

2016 Voter Registration Deadline

- ★ **Presidential Preference Primary Election: February 1, 2016**
- ★ **Primary Election: August 1, 2016**
- ★ **General Election: October 11, 2016**

2016 Absentee Ballot 'Send' Deadline

For absent stateside and overseas uniformed and civilian voters ("UOCAVA voters") (45 day deadline before election):

- ★ **Presidential Preference Primary Election: January 16, 2016**
- ★ **Primary Election: July 16, 2016**
- ★ **General Election: September 24, 2016**

For domestic voters (7-day mailing window):

- ★ **Presidential Preference Primary Election: January 26 – February 2, 2016**
- ★ **Primary Election: July 26 – August 2, 2016**
- ★ **General Election: October 4 – 11, 2016**

2016 Early Voting Period (minimum mandatory 8 days beginning on the 10th day and ending on the 3rd day before Election Day)*

- ★ **Presidential Preference Primary Election: February 20- 27, 2016**
- ★ **Primary Election: August 20 – 27, 2016**
- ★ **General Election: October 29 – November 5, 2016**

*Each county Supervisor of Elections may at his or her own discretion offer additional days of early voting on any or all days during the 15th through 11th day and the last Sunday before Election Day.

2016 Candidate Qualifying Period

- ★ **U.S. Representative, Judicial, State Attorney (Except 20th Circuit) and Public Defender (Except 20th Circuit) Noon, 2 May, 2016 – Noon, 6 May, 2016**
- ★ **Governor and Cabinet, State Senator, State Representative, County Offices and Special Districts Noon, 20 June, 2016 – Noon, 24 June, 2016**



FLORIDA STATE ASSOCIATION OF SUPERVISORS OF ELECTIONS

PO Box 350 | Tallahassee, FL 32302 | Telephone: (850) 599-9120

Executive Committee
2014 - 2015

President
Jerry Holland
President Elect
Brian Corley
Vice President
Chris Chambless

Secretary
Dana Southerland

Treasurer
Paul Lux

Past President
Lori Edwards

Board of Directors
2014-2015

Tappie Villane
Mark Andersen
Tommy Hardee
Wesley Wilcox
Vicky Oakes
Mary Jane Arrington
Deborah Clark
Jeff Ussery
Diane Hagan
Brenda Hoots

General Counsel

Ronald Labasky, Esq.

2015 FSASE LEGISLATIVE PRIORITIES

- Two issues strongly endorsed by the FSASE will require implementation and cooperation of the Florida Department of State and /or the Department of Highway Safety and Motor Vehicles. Therefore, their support is critical to these legislative proposals:
 - Amend the Election Code to allow Online Voter Registration Applications.
 - Provide necessary legislative authorization to the Department of State to join the Electronic Voter Registration Center (ERIC) and utilize Federal Help America Vote Act Trust Funds for implementation costs.
- Voters have become increasingly concerned and annoyed that personal information provided when registering to vote is available to anyone pursuant to the public records provisions. The FSASE believes a voter's e-mail, phone number and year of birth should be exempt from Public Records disclosure in order to prevent identity theft, mitigate voter fraud and limit unnecessary invasive contacts by non-election officials.
- There are several technical suggestions which FSASE believes will save tax funds or provide voters a better voting experience:
 - Restore the provision in section 101.20(2), Florida Statutes, and allow voters to receive sample ballots mailed directly to them but not also require the expense of publication in a newspaper.
 - Add Concealed Weapons Permit, Veterans Administration Card and Passport Identification Cards to identifications which may be used at an early voting or election day polling location.

- Conform the date in section 101.68(4)(c), Florida Statutes, concerning the absentee ballot affidavit with section 101.68(4)(b), Florida Statutes.
- Allow Federal Write-In Absentee Ballots to be used in local referendums by military or overseas voters.
- Allow flexibility in the number of early voting locations utilized in special elections.
- Require CDD and Special District elections to be placed on the Primary Election ballot rather than the General Election.
- Provide in section 101.62(3), Florida Statutes, that absentee ballot uploads be made by noon of each day, thus consistent with early voting uploads provided in section 101.657(2), Florida Statutes.
- Provide option to municipalities and supervisors to conduct candidate elections by mail ballot.
- Remove “Not Yet Designated” statement in section 101.6102, Florida Statutes, concerning candidates for Lt. Governor on Primary Election ballot.
- Allow signature updates by voters until 5:00 p.m. the day prior to an election for absentee ballots.
- Provide that the Chief Judge approve the alternate for the Supervisor of Elections on the Canvassing Board.
- Allow option of using voter’s signature from early voting or election day certificate as signature of record.
- Provide that Department of State report HAVA expenditures annually.



FSASE Position Paper: Online Voter Registration Application

It is the position of the Florida State Association of Supervisors of Elections (FSASE) that the 2015 regular legislative session is the appropriate time for Florida to pursue Online Voter Registration (OVR) application with an implementation to be determined by the Department of State and the Department of Highway Safety & Motor Vehicles in an expeditious timeframe. According to the National Conference of State Legislatures (NCSL), as of June 2014, twenty states currently offer online voter registration. This method would complement and augment the current method of registering to vote by allowing elections' officials to harness technology. More importantly, it would allow eligible electors to register to vote online in a convenient yet secure manner. The current method of registering to vote by accessing an on-line voter registration application through the Division of Elections (DOE) or Supervisor of Elections websites requires the voter to print, sign, date, and mail or deliver the application. An OVR process would eliminate the need to print and mail the application by having the applicant agree to use an existing signature that is already on file through the Department of Highway Safety and Motor Vehicles (DHSMV) and/or Tax Collector. In the interest of access to voter registration for all voters, the traditional method of registering to vote would still be an option for those who do not have access to a computer.

With the passage of this legislation, a coordinated effort between the Florida Department of State, DHSMV and the Supervisors of Elections would be necessary during implementation to ensure congruity of the system. In researching the concept of online voter registration, it's important to note that Florida would be joining twenty states which have already implemented OVR, and the data has clearly shown that registering to vote online is not a partisan issue. There is no pattern of increase or decrease of party affiliation registration when compared to traditional voter registration.

In analyzing the prospective pros and cons, it becomes apparent that there are only benefits which include:

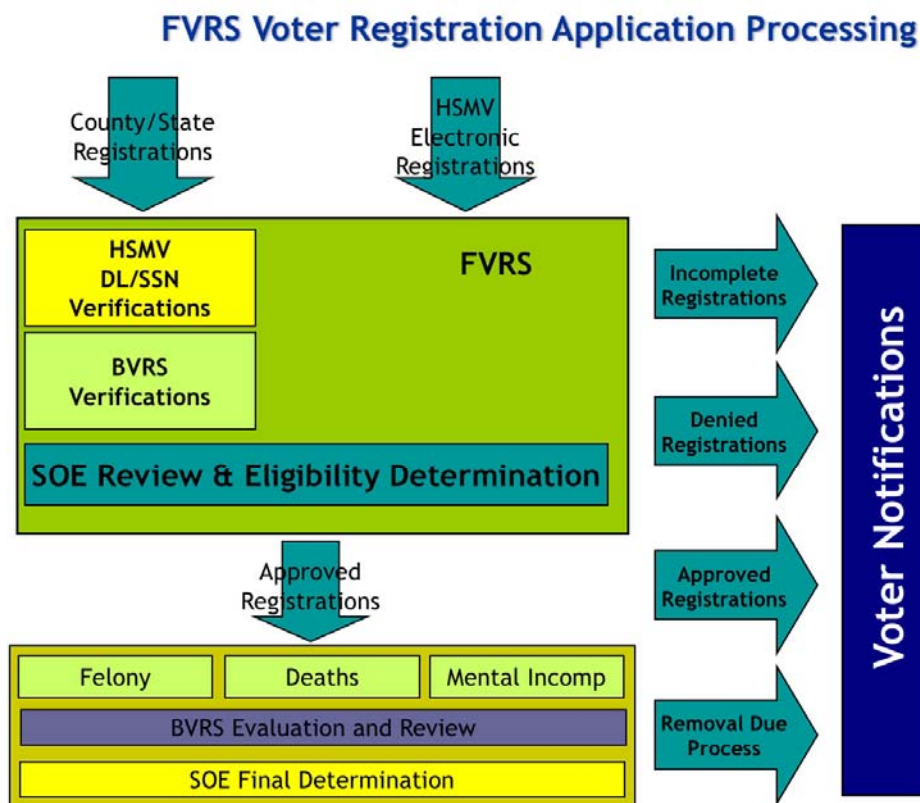
- Accessibility and convenience for voters to register 24 hours a day/7 days a week/365 days a year
- Reduction in cost to the Division of Elections and respective Supervisors of Elections
- Reduction in data entry errors and the resultant increase in the accuracy of voter rolls
- Bolstered integrity of the process as a result of OVR persons who previously presented themselves to DHSMV/Tax Collector staff

- Reduction in fraud as reported by Tammy Patrick, Elections Administrator with Maricopa County, Arizona (the first state to implement OVR), who cites no instances of fraud in conjunction with OVR
- Non-Political (Endorsed by the Bi-Partisan Policy Center & Pew Charitable Trusts)

Voter Registration Application in Florida: How is it currently done?

The voter either completes the Florida voter registration application and mails it or has it delivered to their respective Supervisor of Elections. Additionally, in accordance with the National Voting Rights Act (NVRA) also known as the “Motor Voter” law, the individual verbally relays information to the DHSMV or County Tax Collector staff that inputs the data. The voter is then given a receipt of the transaction.

As the below flowchart outlines, applications are entered into the Florida Voter Registration System (FVRS) and then electronically forwarded to the Division of Elections for verification and validity of the data provided. It is important to note that the verification of the data provided will not cease or change with OVR.



HSMV=Highway Safety & Motor Vehicles
BVRs=Division of Elections (Bureau of Voting Registration Services)
SOE=Supervisor of Elections

The current paper Florida Voter Registration Application:

Florida Voter Registration Application Part 1 – Instructions (DS-DE 39, R1S-2.040, F.A.C.) (eff. 10/2013)		Información en español: Sirvase llamar a la oficina del supervisor de elecciones de su condado si le interesa obtener este formulario en español.	
<p>To Register in Florida, you must be:</p> <ul style="list-style-type: none">• a U.S. citizen,• a Florida resident,• at least 18 years old (you may pre-register at 16 or 17, but cannot vote until you are 18). <p>If you have been convicted of a felony, or if a court has found you to be mentally incapacitated as to your right to vote, you cannot register until your right to vote is restored.</p> <p>If you do not meet any ONE of these requirements, you are not eligible to register.</p> <p>Questions?</p> <p>Contact the Supervisor of Elections in your county: http://election.dos.state.fl.us/soe/supervisor_elections.shtml Visit the Florida Division of Elections' website at: http://election.dos.state.fl.us.</p> <p>CRIMINAL OFFENSE: It is a 3rd degree felony to submit false information. Maximum penalties are \$5,000 and/or 5 years in prison.</p> <p>PUBLIC RECORD: Once filed, all information including your phone number and email address as provided become public record except for the following which can only be used for voter registration purposes: your FL DL#, FL ID#, SSN, where you registered to vote, and whether you declined to register or to update your voter registration record at a voter registration agency. Your signature can be viewed but not copied. (Section 97.0585, Fla. Stat.)</p>		<p>Where to Register: You can register to vote by completing this application and delivering it in person or by mail to any supervisor of elections' office, office that issues driver's licenses, or voter registration agency (public assistance office, center for independent living, office serving persons with disabilities, public library, or armed forces recruitment office) or the Division of Elections. Mailing addresses are on page 2 of this form.</p> <p>Deadline to Register: The deadline to register to vote is 29 days before any election. You can update your registration record at any time, but for a Primary Election, party changes must be completed 29 days before that election. You will be contacted if your new application is incomplete, denied or a duplicate of an existing registration. Your Voter Information Card will be mailed to you once you are registered.</p> <p>Identification (ID) Requirements: New applicants must provide a current and valid Florida driver's license number (FL DL#) or Florida identification card number (FL ID#). If you do not have a FL DL# or FL ID#, then you must provide the last four digits of your Social Security number (SSN). If you do not have any of these numbers, check "None." If you leave the field and box blank, your new registration may be denied. See section 97.053(6), Fla. Stat.</p> <p>Special ID requirements: If you are registering by mail, have never voted in Florida, and have never been issued one of the ID numbers above, include one of the following with your application, or at a later time before you vote: 1) A copy of an ID that shows your name and photo (acceptable IDs--U.S. Passport, debit or credit card, military ID, student ID, retirement center ID, neighborhood association ID, or public assistance ID); or 2) A copy of an ID that shows your name and current residence address (acceptable documents--utility bill, bank statement, government check, paycheck, or other government document).</p> <p>The special ID is not required if you are 65 or older, have a temporary or permanent physical disability, are a member of the active uniformed services or merchant marine who is absent from the county for active duty, or a spouse or dependent thereof, or are currently living outside the U.S. but otherwise eligible to vote in Florida.</p> <p>Political Party Affiliation: Florida is a closed primary election state. In primary elections, registered voters can only vote for their registered party's candidates in a partisan race on the ballot. In a primary election, all registered voters, regardless of party affiliation, can vote on any issue, nonpartisan race, and race where a candidate faces no opposition in the General Election. If you do not indicate your party affiliation, you will be registered with no party affiliation. For a list of political parties, visit the Division of Elections' website at: http://election.dos.state.fl.us/</p> <p>Race/Ethnicity: It is optional to list your race or ethnicity.</p> <p>Boxes: Please check boxes () where applicable.</p>	
Numbered rows 1 through 7 and 12 must be completed for a new registration.			
Florida Voter Registration Application Part 2 – Form (DS-DE #39, R1S-2.040, F.A.C.) (eff. 10/2013)		The downloadable/printable online form is available at: http://election.dos.state.fl.us/pdf/webappform.pdf	
This is: <input type="checkbox"/> New Registration <input type="checkbox"/> Record Update/Change (e.g., Address, Party Affiliation, Name, Signature) <input type="checkbox"/> Request to Replace Voter Information Card			
1	Are you a citizen of the United States of America?	<input type="checkbox"/> YES <input type="checkbox"/> NO	OFFICIAL USE ONLY
2	<input type="checkbox"/> I affirm that I am not a convicted felon, or if I am, my right to vote has been restored.		
3	<input type="checkbox"/> I affirm that I have not been adjudicated mentally incapacitated with respect to voting or, if I have, my right to vote has been restored.		
4	Date of Birth (MM-DD-YYYY)		FVRS No:
5	Florida Driver License (FL DL) or Florida identification (FL ID) Card Number		If no FL DL or FL ID, then provide
6	Last Name	First Name	Last 4 digits of Social Security Number
7	Address Where You Live (legal residence-no P.O. Box)	Apt/Lot/Unit	City
8	Mailing Address (if different from above address)	Apt/Lot/Unit	City
9	Address Where You Were Last Registered to Vote	Apt/Lot/Unit	City
10	Former Name (if name is changed)	Gender <input type="checkbox"/> M <input type="checkbox"/> F	State or Country of Birth
11	<input type="checkbox"/> Email me SAMPLE BALLOTS if option is available in my county. (See Public Record Notice above) My email address is:		
Party Affiliation (Check only one. If left blank, you will be registered without party affiliation)		Race/Ethnicity (Check only one)	
<input type="checkbox"/> Florida Democratic Party <input type="checkbox"/> Republican Party of Florida <input type="checkbox"/> No party affiliation <input type="checkbox"/> Minor party (print party name):		<input type="checkbox"/> American Indian/Alaskan Native <input type="checkbox"/> Asian/Pacific Islander <input type="checkbox"/> Black, not of Hispanic Origin <input type="checkbox"/> Hispanic <input type="checkbox"/> White, not of Hispanic Origin <input type="checkbox"/> Multi-racial <input type="checkbox"/> Other:	
		(Check only one if applicable)	
		<input type="checkbox"/> I am an active duty Uniformed Services or Merchant Marine member <input type="checkbox"/> I am a spouse or a dependent of an active duty uniformed services or merchant marine member <input type="checkbox"/> I am a U.S. citizen residing outside the U.S.	
		<input type="checkbox"/> I will need assistance with voting. <input type="checkbox"/> I am interested in becoming a poll worker.	
12	Oath: I do solemnly swear (or affirm) that I will protect and defend the Constitution of the United States and the Constitution of the State of Florida, that I am qualified to register as an elector under the Constitution and laws of the State of Florida, and that all information provided in this application is true.	SIGN/ MARK HERE	Date

Voter Registration in Florida: What would an OVR application process be like?

An interactive web-based voter registration application process which mimics the paper application process is already in widespread use in Florida, but could be more streamlined by the addition of a simple set of enhancements that could provide immediate feedback to the applicant and final notification of verification within 24 hours.

The current process would in no way be compromised. The applicant will still be required to affirm their identity by providing either a Florida Driver License or Florida ID Number. The verification process with the current method of voter registration through the Division of Elections would not be altered. A signature for the applicant would be retrieved from the DHSMV records, thus eliminating the steps of printing and mailing the form.

Legislative Impact:

Since the state of Florida does not have an Interactive Registration Form transaction at this time, the Division of Elections would need to construct the entire site. This could significantly lengthen implementation timelines, either because of the need to construct a site or to go through an acquisition process to get one constructed. Additionally, as previously mentioned, the Division of Elections would need to coordinate efforts with the Florida Department of Highway Safety & Motor Vehicles and the Supervisors of Elections.

Updated 12/11/14



Florida Voter Registration Application
Part 1 – Instructions (DS-DE 39, R1S-2.040, F.A.C.) (eff. 10/2013)

Información en español: Sirvase llamar a la oficina del supervisor de elecciones de su condado si le interesa obtener este formulario en español.

To Register in Florida, you must be:

- a U.S. citizen,
- a Florida resident,
- at least 18 years old (you may pre-register at 16 or 17, but cannot vote until you are 18).

If you have been convicted of a felony, or if a court has found you to be mentally incapacitated as to your right to vote, you cannot register until your right to vote is restored.

If you do not meet any ONE of these requirements, you are not eligible to register.

Questions?

Contact the Supervisor of Elections in your county:
http://election.dos.state.fl.us/SOE/supervisor_elections.shtml
Visit the Florida Division of Elections' website at:
<http://election.dos.state.fl.us>

CRIMINAL OFFENSE: It is a 3rd degree felony to submit false information. Maximum penalties are \$5,000 and/or 5 years in prison.

PUBLIC RECORD: Once filed, all information including your phone number and email address as provided become public record except for the following which can only be used for voter registration purposes: your FL DL#, FL ID#, SSN, where you registered to vote, and whether you declined to register or to update your voter registration record at a voter registration agency. Your signature can be viewed but not copied. (Section 97.0585, Fla. Stat.)

Where to Register: You can register to vote by completing this application and delivering it in person or by mail to any supervisor of elections' office, office that issues driver's licenses, or voter registration agency (public assistance office, center for independent living, office serving persons with disabilities, public library, or armed forces recruitment office) or the Division of Elections. Mailing addresses are on page 2 of this form.

Deadline to Register: The deadline to register to vote is 29 days before any election. You can update your registration record at any time, but for a Primary Election, party changes must be completed 29 days before that election. You will be contacted if your new application is incomplete, denied or a duplicate of an existing registration. Your Voter Information Card will be mailed to you once you are registered.

Identification (ID) Requirements: New applicants must provide a current and valid Florida driver's license number (FL DL#) or Florida identification card number (FL ID#). If you do not have a FL DL# or FL ID#, then you must provide the last four digits of your Social Security number (SSN). If you do not have any of these numbers, check "None." If you leave the field and box blank, your new registration may be denied. See section 97.053(6), Fla.Stat.

Special ID requirements: If you are registering by mail, have never voted in Florida, and have never been issued one of the ID numbers above, include one of the following with your application, or at a later time before you vote: 1) A copy of an ID that shows your name and photo (*acceptable IDs*—U.S. Passport, debit or credit card, military ID, student ID, retirement center ID, neighborhood association ID, or public assistance ID); or 2) A copy of an ID that shows your name and current residence address (*acceptable documents*—utility bill, bank statement, government check, paycheck, or other government document).

The special ID is not required if you are 65 or older, have a temporary or permanent physical disability, are a member of the active uniformed services or merchant marine who is absent from the county for active duty, or a spouse or dependent thereof, or are currently living outside the U.S. but otherwise eligible to vote in Florida.

Political Party Affiliation: Florida is a closed primary election state. In primary elections, registered voters can only vote for their registered party's candidates in a partisan race on the ballot. In a primary election, all registered voters, regardless of party affiliation, can vote on any issue, nonpartisan race, and race where a candidate faces no opposition in the General Election. If you do not indicate your party affiliation, you will be registered with no party affiliation. For a list of political parties, visit the Division of Elections' website at: <http://election.dos.state.fl.us/>

Race/Ethnicity: It is optional to list your race or ethnicity.

Boxes: Please check boxes () where applicable.

Numbered rows 1 through 7 and 12 must be completed for a new registration.



Florida Voter Registration Application

Part 2 – Form (DS-DE #39, R1S-2.040, F.A.C.) (eff. 10/2013)

The downloadable/printable online form is available at:

<http://election.dos.state.fl.us/pdf/webappform.pdf>

This is: ☐ New Registration ☐ Record Update/Change (e.g., Address, Party Affiliation, Name, Signature) ☐ Request to Replace Voter Information Card

1	Are you a citizen of the United States of America? <input type="checkbox"/> YES <input type="checkbox"/> NO				OFFICIAL USE ONLY				
2	<input type="checkbox"/> I affirm that I am not a convicted felon, or if I am, my right to vote has been restored.								
3	<input type="checkbox"/> I affirm that I have not been adjudicated mentally incapacitated with respect to voting or, if I have, my right to vote has been restored.								
4	Date of Birth (MM-DD-YYYY) <input type="text"/> <input type="text"/> - <input type="text"/> <input type="text"/> - <input type="text"/> <input type="text"/> <input type="text"/> <input type="text"/> <input type="text"/>				FVRS No:				
5	Florida Driver License (FL DL) or Florida identification (FL ID) Card Number <input type="text"/> <input type="text"/> <input type="text"/> <input type="text"/> - <input type="text"/> <input type="text"/> <input type="text"/> <input type="text"/> - <input type="text"/> <input type="text"/> <input type="text"/> <input type="text"/> - <input type="text"/> <input type="text"/> <input type="text"/> <input type="text"/>				If <u>no</u> FL DL or FL ID, then provide <input type="text"/>		Last 4 digits of Social Security Number <input type="text"/> <input type="text"/> <input type="text"/> <input type="text"/>		<input type="checkbox"/> I have NONE of these numbers.
6	Last Name <input type="text"/>		First Name <input type="text"/>		Middle Name <input type="text"/>		Name Suffix (Jr., Sr., I, II, etc.): <input type="text"/>		
7	Address Where You Live (legal residence-no P.O. Box) <input type="text"/>		Apt/Lot/Unit <input type="text"/>	City <input type="text"/>		County <input type="text"/>		Zip Code <input type="text"/>	
8	Mailing Address (if different from above address) <input type="text"/>		Apt/Lot/Unit <input type="text"/>	City <input type="text"/>		State or Country <input type="text"/>		Zip Code <input type="text"/>	
9	Address Where You Were Last Registered to Vote <input type="text"/>		Apt/Lot/Unit <input type="text"/>	City <input type="text"/>		State <input type="text"/>		Zip Code <input type="text"/>	
10	Former Name (if name is changed) <input type="text"/>		Gender <input type="checkbox"/> M <input type="checkbox"/> F	State or Country of Birth <input type="text"/>		Telephone No. (optional) (<input type="text"/>) <input type="text"/>			
11	<input type="checkbox"/> Email me SAMPLE BALLOTS if option is available in my county. (See Public Record Notice above) My email address is: <input type="text"/>								
Party Affiliation (Check only one. If left blank, you will be registered without party affiliation) <input type="checkbox"/> Florida Democratic Party <input type="checkbox"/> Republican Party of Florida <input type="checkbox"/> No party affiliation <input type="checkbox"/> Minor party (print party name): <input type="text"/>		Race/Ethnicity (Check only one) <input type="checkbox"/> American Indian/Alaskan Native <input type="checkbox"/> Asian/Pacific Islander <input type="checkbox"/> Black, <i>not of</i> Hispanic Origin <input type="checkbox"/> Hispanic <input type="checkbox"/> White, <i>not of</i> Hispanic Origin <input type="checkbox"/> Multi-racial <input type="checkbox"/> Other: <input type="text"/>		(Check only one if applicable) <input type="checkbox"/> I am an active duty Uniformed Services or Merchant Marine member <input type="checkbox"/> I am a spouse or a dependent of an active duty uniformed services or merchant marine member <input type="checkbox"/> I am a U.S. citizen residing outside the U.S.				<input type="checkbox"/> I will need assistance with voting. <input type="checkbox"/> I am interested in becoming a poll worker.	
12	Oath: I do solemnly swear (or affirm) that I will protect and defend the Constitution of the United States and the Constitution of the State of Florida, that I am qualified to register as an elector under the Constitution and laws of the State of Florida, and that all information provided in this application is true.			SIGN/ MARK HERE 			Date <input type="text"/>		

**Address your envelope to
your County Supervisor of
Elections. (Updated 7/17/2014)**

ALACHUA COUNTY
Supervisor of Elections
111 SE 1st Avenue
Gainesville, FL 32601-6819
352-374-5252

BAKER COUNTY
Supervisor of Elections
PO Box 505
MacClenny FL 32063-0505
904-259-6339

BAY COUNTY
Supervisor of Elections
830 W. 11th St.
Panama City FL 32401
850-784-6100

BRADFORD COUNTY
Supervisor of Elections
PO Box 58
Starke FL 32091-2110
904-966-6266

BREVARD COUNTY
Supervisor of Elections
PO Box 410819
Melbourne FL 32941-0819
321-264-6740

BROWARD COUNTY
Supervisor of Elections
PO Box 029001
Fort Lauderdale FL 33302
954-357-7050

CALHOUN COUNTY
Supervisor of Elections
20859 Central Ave. E., Rm 117
Blountstown FL 32424-2264
850-674-8568

CHARLOTTE COUNTY
Supervisor of Elections
226 Taylor Street, Unit 120
Punta Gorda FL 33950
941-833-5400

CITRUS COUNTY
Supervisor of Elections
120 N. Apopka Ave.
Inverness FL 34450-4238
352-341-6740

CLAY COUNTY
Supervisor of Elections
PO Box 337
Green Cove Springs FL 32043-0337
904-284-6350

COLLIER COUNTY
Supervisor of Elections
Rev Dr MLK Jr Bldg
3295 Tamiami Trail E
Naples FL 34112-5758
239-252-VOTE (8683)

COLUMBIA COUNTY
Supervisor of Elections
971 W. Duval St., Suite 102
Lake City FL 32055-3734
386-758-1026

DESOTO COUNTY
Supervisor of Elections
PO Box 89
Arcadia FL 34265-4451
863-993-4871

DIXIE COUNTY
Supervisor of Elections
PO Box 2057
Cross City FL 32628-2057
352-498-1216

DUVAL COUNTY
Supervisor of Elections
105 E. Monroe St.
Jacksonville FL 32202-3215
904-630-1414

ESCAMBIA COUNTY
Supervisor of Elections
PO Box 12601
Pensacola FL 32591-2601
850-595-3900

FLAGLER COUNTY
Supervisor of Elections
PO Box 901
Bunnell FL 32110-0901
386-313-4170

FRANKLIN COUNTY
Supervisor of Elections
47 Ave. F
Apalachicola FL 32320-2311
850-653-9520

GADSDEN COUNTY
Supervisor of Elections
PO Box 186
Quincy FL 32353
850-627-9910

GILCHRIST COUNTY
Supervisor of Elections
112 S. Main St., Room 128
Trenton FL 32693-3249
352-463-3194

GLADES COUNTY
Supervisor of Elections
PO Box 668
Moore Haven FL 33471-0668
863-946-6005

GULF COUNTY
Supervisor of Elections
401 Long Ave.
Port St. Joe FL 32456-1707
850-229-6117

HAMILTON COUNTY
Supervisor of Elections
1153 US Hwy. 41 NW, Suite 1
Jasper FL 32052-5856
386-792-1426

HARDEE COUNTY
Supervisor of Elections
311 N. 6th Ave.
Wauchula FL 33873-2361
863-773-6061

HENDRY COUNTY
Supervisor of Elections
PO Box 174
LaBelle FL 33975-0174
863-675-5230

HERNANDO COUNTY
Supervisor of Elections
20 N. Main St., Room 165
Brooksville FL 34601-2864
352-754-4125

HIGHLANDS COUNTY
Supervisor of Elections
PO Box 3448
Sebring FL 33871-3448
863-402-6655

HILLSBOROUGH COUNTY
Supervisor of Elections
2514 N Falkenberg Rd
Tampa FL 33619-0917
813-272-5850

HOLMES COUNTY
Supervisor of Elections
201 N. Oklahoma St., Suite 102
Bonifay FL 32425-2243
850-547-1107

INDIAN RIVER COUNTY
Supervisor of Elections
4375 43rd Ave.
Vero Beach FL 32967-1024
772-226-3440

JACKSON COUNTY
Supervisor of Elections
PO Box 6046
Marianna FL 32447-6046
850-482-9652

JEFFERSON COUNTY
Supervisor of Elections
380 W. Dogwood St.
Monticello FL 32344-1470
850-997-3348

LAFAYETTE COUNTY
Supervisor of Elections
PO Box 76
Mayo FL 32066-0076
386-294-1261

LAKE COUNTY
Supervisor of Elections
PO Box 457
Tavares FL 32778-0457
352-343-9734

LEE COUNTY
Supervisor of Elections
PO Box 2545
Fort Myers FL 33902-2545
239-533-VOTE (8683)

LEON COUNTY
Supervisor of Elections
PO Box 7357
Tallahassee FL 32314-7357
850-606-VOTE (8683)

LEVY COUNTY
Supervisor of Elections
421 S. Court St.
Bronson FL 32621-6520
352-486-5163

LIBERTY COUNTY
Supervisor of Elections
PO Box 597
Bristol FL 32321-0597
850-643-5226

MADISON COUNTY
Supervisor of Elections
239 SW Pinckney St.
Madison FL 32340
850-973-6507

MANATEE COUNTY
Supervisor of Elections
PO Box 1000
Bradenton FL 34206-1000
941-741-3823

MARION COUNTY
Supervisor of Elections
PO Box 289
Ocala FL 34478-0289
352-620-3290

MARTIN COUNTY
Supervisor of Elections
PO Box 1257
Stuart FL 34995-1257
772-288-5637

MIAMI-DADE COUNTY
Supervisor of Elections
PO Box 521550
Miami FL 33152-1550
305-499-VOTE (8683)

MONROE COUNTY
Supervisor of Elections
530 Whitehead St., Suite 101
Key West FL 33040-6577
305-292-3416

NASSAU COUNTY
Supervisor of Elections
96135 Nassau Place, Suite 3
Yulee FL 32097-8635
904-491-7500

OKALOOSA COUNTY
Supervisor of Elections
302 Wilson St. N., Suite 102
Crestview FL 32536-3440
850-689-5600

OKEECHOBEE COUNTY
Supervisor of Elections
304 NW 2nd St., Room 144
Okeechobee FL 34972-4120
863-763-4014

ORANGE COUNTY
Supervisor of Elections
PO Box 562001
Orlando FL 32856-2001
407-836-2070

OSCEOLA COUNTY
Supervisor of Elections
2509 E. Irls Bronson Memorial Hwy.
Kissimmee FL 34744-4909
407-742-6000

PALM BEACH COUNTY
Supervisor of Elections
PO Box 22309
West Palm Beach FL 33416-2309
561-656-6200

PASCO COUNTY
Supervisor of Elections
PO Box 300
Dade City FL 33526-0300
352-521-4302

PINELLAS COUNTY
Supervisor of Elections
13001 Starkey Road
Largo FL 33773-1416
727-464-VOTE (8683)

POLK COUNTY
Supervisor of Elections
PO Box 1460
Bartow FL 33831-1460
863-534-5888

PUTNAM COUNTY
Supervisor of Elections
2509 Crill Ave., Suite 900
Palatka FL 32177-4267
386-329-0224

SANTA ROSA COUNTY
Supervisor of Elections
6495 Caroline St., Suite F
Milton FL 32570-4592
850-983-1900

SARASOTA COUNTY
Supervisor of Elections
PO Box 4194
Sarasota FL 34230-4194
941-861-8600

SEMINOLE COUNTY
Supervisor of Elections
PO Box 1479
Sanford FL 32772-1479
407-585-VOTE (8683)

ST. JOHNS COUNTY
Supervisor of Elections
4455 Ave. A, Suite 101
St. Augustine FL 32095-5200
904-823-2238

ST. LUCIE COUNTY
Supervisor of Elections
4132 Okeechobee Road
Fort Pierce FL 34947
772-462-1500

SUMTER COUNTY
Supervisor of Elections
900 N. Main St.
Bushnell FL 33513-5008
352-569-1540

SUWANNEE COUNTY
Supervisor of Elections
220 Pine Ave. SW
Live Oak FL 32064-2315
386-362-2616

TAYLOR COUNTY
Supervisor of Elections
PO Box 1060
Perry FL 32348-1060
850-838-3515

UNION COUNTY
Supervisor of Elections
175 W. Main St.
Lake Butler FL 32054
386-496-2236

VOLUSIA COUNTY
Supervisor of Elections
125 W. New York Ave.
DeLand FL 32720-5415
386-736-5930

WAKULLA COUNTY
Supervisor of Elections
PO Box 305
Crawfordville FL 32326-0305
850-926-7575

WALTON COUNTY
Supervisor of Elections
571 E. Nelson Ave. (US Hwy. 90)
DeFuniak Springs FL 32433-1378
850-892-8112

WASHINGTON COUNTY
Supervisor of Elections
1331 South Blvd., Suite 900
Chipley FL 32428-2233
850-638-6230



Florida Elections Commission

Presented by:

Amy McKeever Toman, J.D.

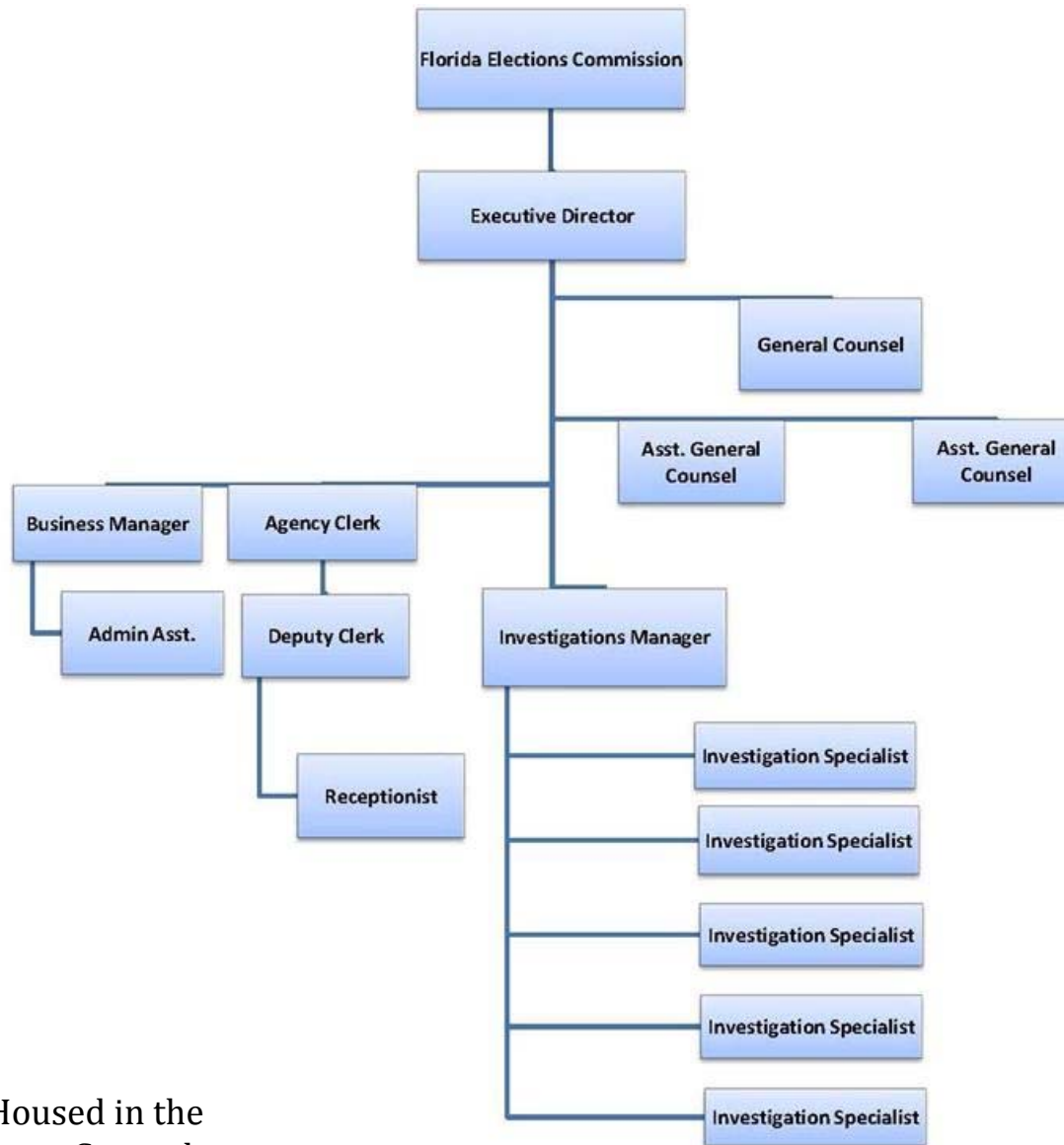
Executive Director

Ensuring Transparency in Florida's Elections



Who gave it, Who got it?

Organizational Structure



Administratively Housed in the
Office of the Attorney General

Commission Members

Tim Holladay, Chair*

Term Expires: January 5, 2015

Brian Seymour, Vice Chair

Term Expires: December 31, 2016

Alia S. Faraj-Johnson

Term Expires: December 31, 2015

Barbra Stern

Term Expires: December 31, 2015

Sean Hall

Term Expires, December 31, 2015

Mack Bernard

Term Expires: December 31, 2016

Patricia Hollarn

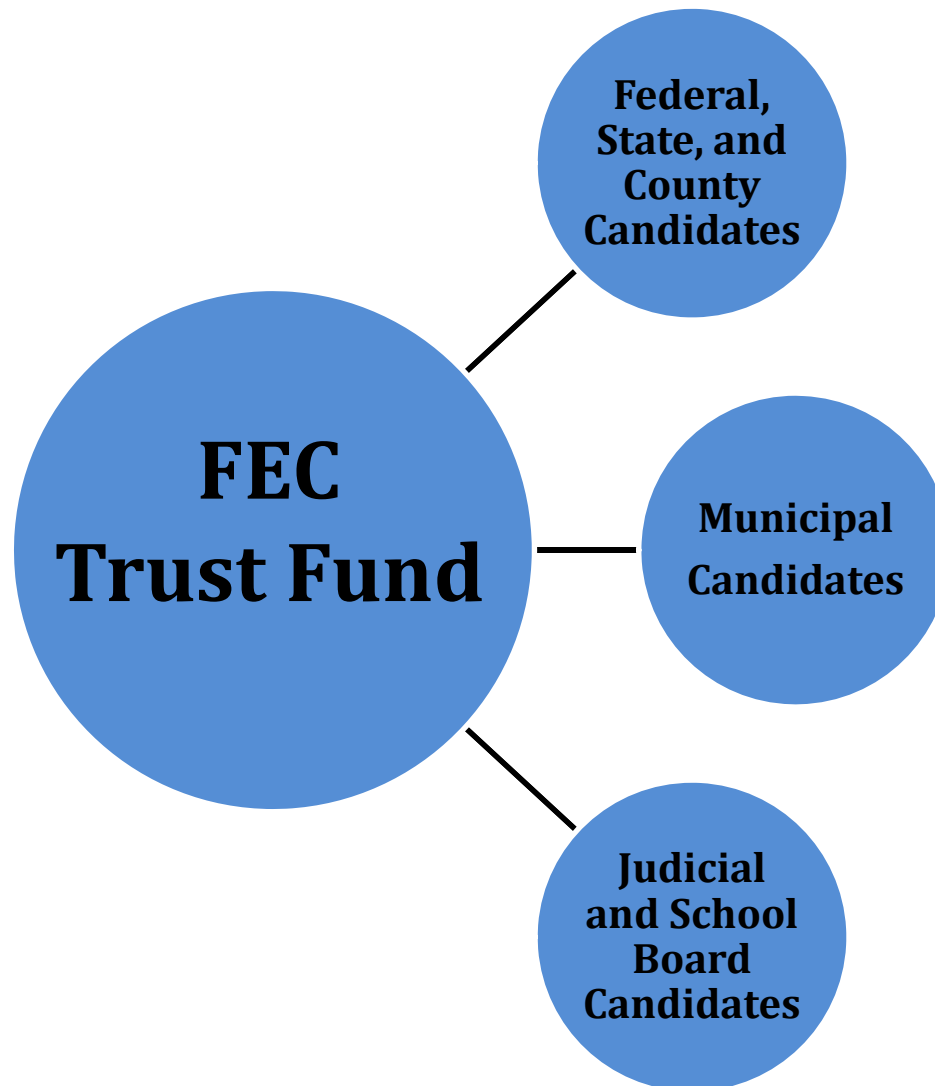
Term Expires, December 31, 2016

Two vacant seats as of January 2015

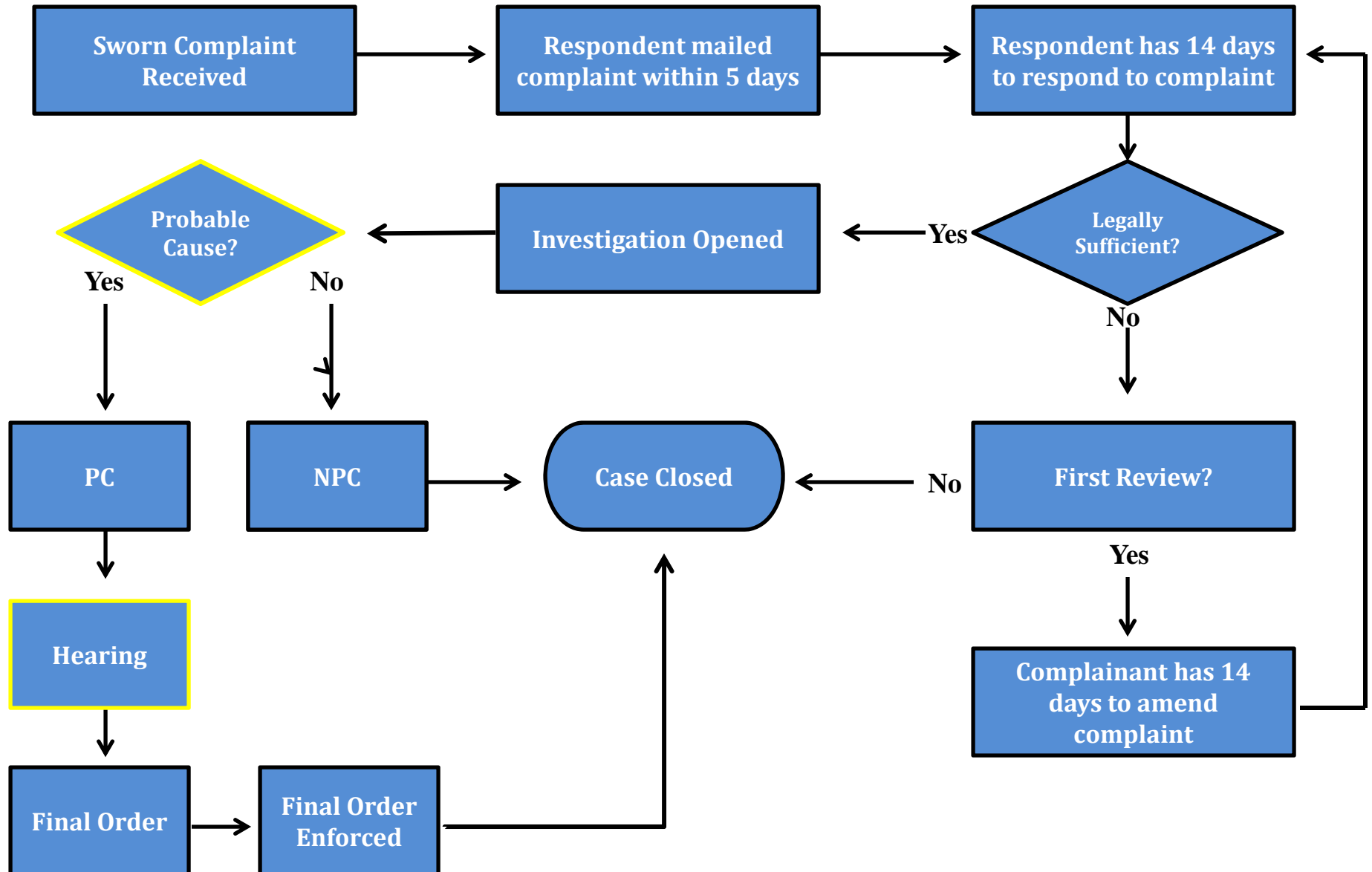
**Holding over until new appointment is made by Governor*

Funded by Election Assessments

Established by Statute



Complaint Process



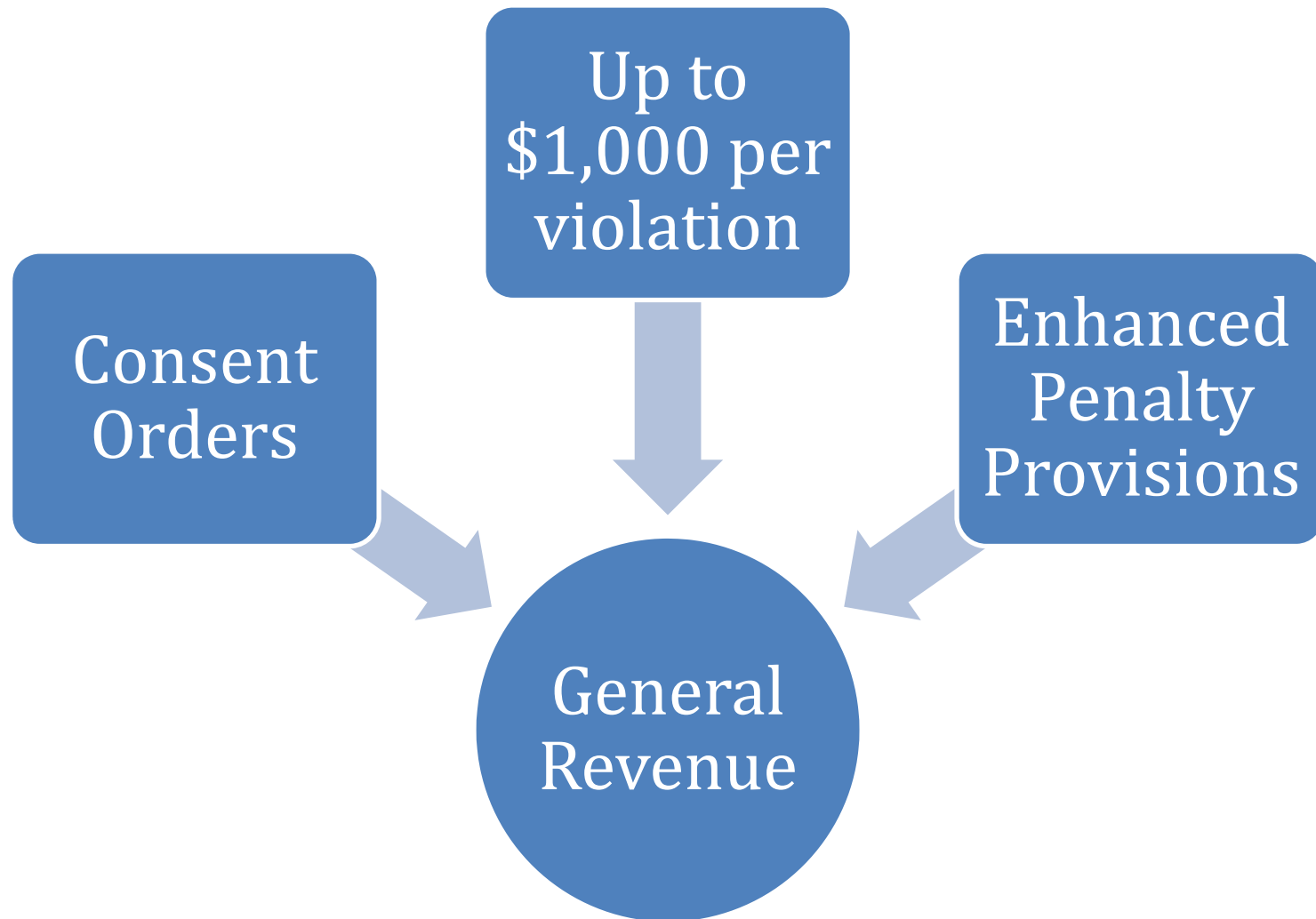
Case Load

Calendar Year	Cases Opened	Cases Closed
2014	506	452
2013	338	400
2012	442	272
2011	300	309
2010	367	306
2009	233	320

Common Violations

106.07(1) or 106.19(1)(c)	Failed to timely file a campaign finance report
106.07(7)	Failed to notify filing officer that no report would be filed because no reportable financial transactions occurred
106.07(5)	Certified that a report was true, correct and complete when it was not
106.19(1)	<p>Additional charge for candidates, persons connected to campaigns and political committees for the following violations:</p> <ul style="list-style-type: none"> (a) Acceptance of excessive contributions (b) Failing to report any contribution required to be reported (c) Falsely reporting or deliberately failing to include required information (d) Making or authorizing an unlawful expenditure
106.143(1)	Failed to use exact verbiage in paid political advertising disclaimer
106.141(1) and (7)	Failed to dispose of all remaining funds and file a termination report within 90 days
106.07(2)(b)1.	Failed to file an addendum within 7 days of notification that a filed report is incomplete
106.03(1)	Registration requirements for political parties and electioneering organizations
104.011	False swearing to any oath regarding voting or elections or submitting false voter info
104.15	Knowingly unqualified voters willfully voting

Civil Penalties





Florida Elections Commission

107 W. Gaines Street, Suite 224

Tallahassee, Florida 32399

Telephone: 850.922.4539

Fax: 850.921.0783

Email: fec@myfloridalegal.com

www.fec.state.fl.us

Linda McKee Robison

Chair

Stanley M. Weston

Vice Chair

Michelle Anchors

Matthew F. Carlucci

Michael Cox

I. Martin Ford

Tom Freeman

Wiley Horton

Susan Horovitz Maurer



State of Florida
COMMISSION ON ETHICS
P.O. Drawer 15709
Tallahassee, Florida 32317-5709

325 John Knox Road
Building E, Suite 200
Tallahassee, Florida 32303

Virlindia Doss

Executive Director

C. Christopher Anderson, III

General Counsel/

Deputy Executive Director

(850) 488-7864 Phone

(850) 488-3077 (FAX)

www.ethics.state.fl.us

"A Public Office is a Public Trust"

MEMORANDUM

TO: All Interested Persons

FROM: Virlindia Doss, Executive Director

SUBJECT: Proposed Legislation for 2015

DATE: November 3, 2014

In 2015, the Ethics Commission recommends the Legislature make the following changes in the Code of Ethics.

1. Conflicts of Interest

Section 112.313(7)(a), the conflict of interest law, prohibits an official from having certain contractual relationships. But corporations and various other entities are viewed as separate legal persons from those who own or control them. This creates a loophole which may allow an official's wholly-owned, one-man corporate entity to do things the official himself could not—such as have a contractual relationship with a company doing business with his agency. To close this loophole, the Commission recommends changing the law to apply the prohibition not only to officials, but to any legal entity the official controls.

2. Recovery of Fines

The problem of officials who fail to pay the automatic fines they receive for failing to make financial disclosure is well-documented. The 2013 Legislature gave the Commission the ability to make salary withholdings and garnish wages, and extended the

statute of limitations to 20 years. As a complement to these tools, the Commission proposes further amending the law to allow it to record its final orders in these matters as liens on the debtor's real and personal property.

3. Increased Penalties

The Commission proposes the maximum be increased from \$10,000 to \$20,000.

4. Change Standard for Awarding Attorney's Fees against Complainants

As a way in which to address the perceived "chilling effect" on potential Complainants, created by the decision in Brown v. State, Comm'n on Ethics 969 So. 2d 553 (Fla. 1st DCA 2007), the Commission recommends legislatively clarifying that the standard is as it had previously been construed by the Commission—that Complainants are held to the same standard applicable to media publications regarding public figures.

5. Financial Disclosure

- a. A 2013 change to the law allows filers 30 days to correct a "de minimis" error or omission, but it is not clear what is to be considered "de minimis" and what is not. The Commission recommends the Legislature specify what it considers "de minimis" to aid the Commission in implementing this section.
- b. Section 112.3145 provides two ways in which Form 1 filers can disclose their income, intangible personal property, and liabilities. The "dollar value threshold" method requires reporting based on a fixed threshold; for example, an official reports the source of gross income over \$2,500. The "comparative (percentage) threshold" method requires reporting based on a calculation; for example, an official reports the source of income which exceeded 5% of his gross income.

The comparative percentage threshold method is complicated and confusing to users, requires a great deal of explanation in the instructions and by staff, and in most cases is *less* informative to the public than the dollar value threshold method. As such, the Commission recommends eliminating the percentage threshold method.

6. Voting Conflicts Law

- a. The Commission recommends the law regarding voting conflicts be changed to prohibit local officials from making any attempt to influence a decision in which they have a conflict, including making any attempt to influence staff about the matter, or to use staff members to influence the outcome of that matter. This would address situations in which local officials participate in discussions and attempt to influence agency decisions even though they have a voting conflict that precludes them from later voting on the matter.

- b. The Commission also recommends that the voting conflict standard for appointed State officials be changed to mirror the standard for local officials.

7. Anti-Nepotism Law

The Commission has seen situations where a public official's relative was appointed or hired to a position by the board on which the official served, with the official abstaining from voting. It recommended that the law be amended to hold the relative who was improperly appointed or hired responsible under these circumstances.

Tab 3A

THE FLORIDA SENATE
APPEARANCE RECORD

1/20/2015

(Deliver BOTH copies of this form to the Senator or Senate Professional Staff conducting the meeting)

Meeting Date

Bill Number (if applicable)

Topic Division of Elections Overview

Amendment Barcode (if applicable)

Name Maria Matthews

Job Title Division of Elections Director

Address 500 S. Bronough St.

Phone 245-6520

Street

Tallahassee

FL

32399

Email maria.matthews@dos.myflorida.com

City

State

Zip

Speaking: ☐ For ☐ Against ☒ Information

Waive Speaking: ☐ In Support ☐ Against
(The Chair will read this information into the record.)

Representing Department of State

Appearing at request of Chair: ☒ Yes ☐ No

Lobbyist registered with Legislature: ☐ Yes ☒ No

While it is a Senate tradition to encourage public testimony, time may not permit all persons wishing to speak to be heard at this meeting. Those who do speak may be asked to limit their remarks so that as many persons as possible can be heard.

This form is part of the public record for this meeting.

S-001 (10/14/14)

Tab 3B

THE FLORIDA SENATE
APPEARANCE RECORD

January 20, 2015

Meeting Date

(Deliver BOTH copies of this form to the Senator or Senate Professional Staff conducting the meeting)

Bill Number (if applicable)

Topic Presentation of FSASE Legislative Priorities

Amendment Barcode (if applicable)

Name Brian Corley-Supervisor of Elections-Pasco County

Job Title Pasco County Supervisor of Elections

Address 14236 6th Street, Suite 200

Phone 352-521-4323

Street

Dade City,

FL

33526

City

State

Zip

Email bcorley@pascovotes.com

Speaking: ☐ For ☐ Against ☒ Information

Waive Speaking: ☐ In Support ☐ Against
(The Chair will read this information into the record.)

Representing Florida State Association of Supervisors of Elections (FSASE)

Appearing at request of Chair: ☒ Yes ☐ No

Lobbyist registered with Legislature: ☐ Yes ☒ No

While it is a Senate tradition to encourage public testimony, time may not permit all persons wishing to speak to be heard at this meeting. Those who do speak may be asked to limit their remarks so that as many persons as possible can be heard.

This form is part of the public record for this meeting.

S-001 (10/14/14)

Tab 3c

THE FLORIDA SENATE
APPEARANCE RECORD

01/20/2015

(Deliver BOTH copies of this form to the Senator or Senate Professional Staff conducting the meeting)

Meeting Date

Bill Number (if applicable)

Topic Florida Elections Commission

Amendment Barcode (if applicable)

Name Amy McKeever Toman

Job Title Executive Director

Address Florida Elections Commission, 107 West Gaines Street, The Collins Building, Suite 224

Phone (850) 922-4539

Street

Tallahassee

FL

32399-1050

City

State

Zip

Email fec@myfloridalegal.com

Speaking: ☐ For ☐ Against ☒ Information

Waive Speaking: ☐ In Support ☐ Against
(The Chair will read this information into the record.)

Representing Florida Elections Commission

Appearing at request of Chair: ☒ Yes ☐ No

Lobbyist registered with Legislature: ☒ Yes ☐ No

While it is a Senate tradition to encourage public testimony, time may not permit all persons wishing to speak to be heard at this meeting. Those who do speak may be asked to limit their remarks so that as many persons as possible can be heard.

This form is part of the public record for this meeting

THE FLORIDA SENATE
APPEARANCE RECORD

Tab: 3A

(Deliver BOTH copies of this form to the Senator or Senate Professional Staff conducting the meeting)

1/20/15
Meeting Date

Bill Number (if applicable)

Topic Ethics Commission

Amendment Barcode (if applicable)

Name VIRUNDIA DOSS

Job Title Executive Director

Address 325 John Knox Rd Bldg E Ste 200
Street

Phone 850) 488-7864

Tallah, FL 323 32317
City State Zip

Email ~~VIRUNDIA~~
DOSS.VIRUNDIA@LEG.
STATE.FL.US

Speaking: ☐ For ☐ Against ☒ Information

Waive Speaking: ☐ In Support ☐ Against
(The Chair will read this information into the record.)

Representing FLA Comm'n on ETHICS

Appearing at request of Chair: ☒ Yes ☐ No

Lobbyist registered with Legislature: ☒ Yes ☐ No

While it is a Senate tradition to encourage public testimony, time may not permit all persons wishing to speak to be heard at this meeting. Those who do speak may be asked to limit their remarks so that as many persons as possible can be heard.

This form is part of the public record for this meeting.

S-001 (10/14/14)

CourtSmart Tag Report

Room: KN 412
Caption: Senate Ethics and Elections

Case:
Judge:

Type:

Started: 1/20/2015 1:32:51 PM
Ends: 1/20/2015 2:52:56 PM **Length:** 01:20:06

1:33:02 PM	Call to Order
1:33:24 PM	Opening Remarks by Sen. Richter, Chair
1:34:26 PM	Roll Call
1:35:16 PM	TAB 1-Introduction of Members and Staff
1:36:43 PM	Dawn Roberts, Staff Director
1:39:00 PM	Chair
1:39:50 PM	TAB 2-Committee Jurisdiction Overview
1:40:09 PM	Staff Director
1:44:18 PM	Chair
1:44:33 PM	TAB 3-Other Introductions and Brief Discussion of Top Priorities
1:45:11 PM	TAB 3(a) Maria Matthews, Director, Division of Elections, Florida Department of State
1:46:18 PM	Florida Election Code
1:46:46 PM	Division of Elections
1:47:38 PM	Office of the Director Major Duties
1:48:48 PM	Special Elections
1:49:06 PM	Bureau of Voter Registration Services Major Duties
1:50:07 PM	Voter Registration History
1:50:52 PM	Bureau of Election Records Major Duties
1:51:34 PM	2014 Election Cycle Activities
1:52:25 PM	Bureau of Voting System Certification Major Duties
1:53:52 PM	Post-Election Voting System Audit
1:54:42 PM	Voting Trends
1:58:17 PM	Chair
1:58:24 PM	Chair Opens for Questions
1:58:30 PM	Sen. Smith
1:58:49 PM	Maria Matthews Responds
1:59:40 PM	Sen. Smith
1:59:54 PM	Maria Matthews Responds
2:01:12 PM	Chair
2:01:15 PM	Sen. Clemens
2:01:35 PM	Maria Matthews Responds
2:02:59 PM	Sen. Clemens
2:03:12 PM	Chair
2:03:15 PM	Sen. Hays
2:03:30 PM	Maria Matthews Responds
2:03:49 PM	Sen. Hays
2:04:17 PM	Maria Matthews Responds
2:05:08 PM	Sen. Sobel
2:05:29 PM	Maria Matthews Responds
2:06:30 PM	Chair
2:06:32 PM	Sen. Thompson
2:06:47 PM	Maria Matthews Responds
2:08:35 PM	Sen. Thompson
2:08:48 PM	Maria Matthews Responds
2:10:20 PM	Chair
2:11:08 PM	Maria Matthews Responds
2:12:07 PM	Chair
2:12:09 PM	Maria Matthews Responds
2:13:12 PM	Chair
2:13:33 PM	TAB 3(b) Brian Corley-Supervisor of Elections-Pasco County speaks instead of Ron Labasky
2:15:22 PM	Online Voter Registration Application
2:20:28 PM	Chair Opens for Questions

2:20:32 PM	Sen. Clemens
2:20:56 PM	Sen. Gaetz
2:21:42 PM	Brian Corley Responds
2:23:12 PM	Sen. Gaetz
2:23:23 PM	Brian Corley Responds
2:24:03 PM	Chair
2:24:07 PM	Brian Corley
2:27:56 PM	Chair
2:28:00 PM	Brian Corley
2:30:38 PM	Chair
2:30:40 PM	Sen. Smith
2:30:48 PM	Brian Corley Responds
2:31:57 PM	Sen. Smith
2:32:12 PM	Brian Corley Responds
2:33:08 PM	Sen. Smith
2:33:17 PM	Brian Corley Responds
2:33:34 PM	Chair
2:33:35 PM	Sen. Sobel
2:33:42 PM	Brian Corley Responds
2:34:39 PM	Chair
2:34:42 PM	Sen. Thompson
2:34:48 PM	Brian Corley Responds
2:35:16 PM	Chair
2:35:21 PM	TAB 3(c) Amy McKeever Toman, Executive Director, Florida Elections Commission
2:38:24 PM	FEC Trust Fund
2:38:39 PM	Complaint Process
2:39:52 PM	Case Load
2:40:41 PM	Common Violations
2:41:16 PM	Civil Penalties
2:41:56 PM	Chair
2:42:05 PM	TAB 3(d) Virilindia Doss, Executive Director, Florida Commission on Ethics
2:50:50 PM	Chair Opens for Questions
2:50:52 PM	Sen. Braynon
2:51:18 PM	Virilindia Doss Responds
2:52:28 PM	Chair
2:52:34 PM	Meeting Adjourned



THE FLORIDA SENATE

Tallahassee, Florida 32399-1100

COMMITTEES:
Education Pre-K - 12, Chair
Ethics and Elections, Vice Chair
Appropriations Subcommittee on Education
Fiscal Policy
Government Oversight and Accountability
Higher Education

SENATOR JOHN LEGG
17th District

Legg.John.web@FLSenate.gov

January 20, 2015

The Honorable Garrett Richter
Committee on Ethics and Elections, Chair
420 Knott Building
404 South Monroe Street
Tallahassee, FL 32399

RE: Excused Absence

Dear Chair Richter:

I am unable to attend the Committee on Ethics and Elections on Tuesday, January 20, 2015 and I respectfully request that this absence be excused. Your leadership and consideration are appreciated.

Sincerely,

A handwritten signature in black ink, appearing to read "John Legg", is written over a horizontal line.

John Legg
State Senator, District 17

cc: Dawn Roberts, Staff Director

REPLY TO:

- ☐ 262 Crystal Grove Boulevard, Lutz, Florida 33548 (813) 909-9919
- ☐ 316 Senate Office Building, 404 South Monroe Street, Tallahassee, Florida 32399-1100 (850) 487-5017

Senate's Website: www.flsenate.gov

ANDY GARDINER
President of the Senate

GARRETT RICHTER
President Pro Tempore